

107°53'W

107°52'W

107°51'W

107°50'W

107°49'W

107°48'W

**416 FIRE CO-SJF-416**  
**Div A Day 6/13/18**  
 MMA Perimeter as of 6/12/18 @ 1601 - 25,905 ac.  
 Datum NAD83 0 0.5 1 Miles NB 6/12/18 2200

37°29'N

37°28'N

37°27'N

37°26'N

37°25'N

37°24'N

37°23'N

37°29'N

37°28'N

37°27'N

37°26'N

37°25'N

37°24'N

37°23'N

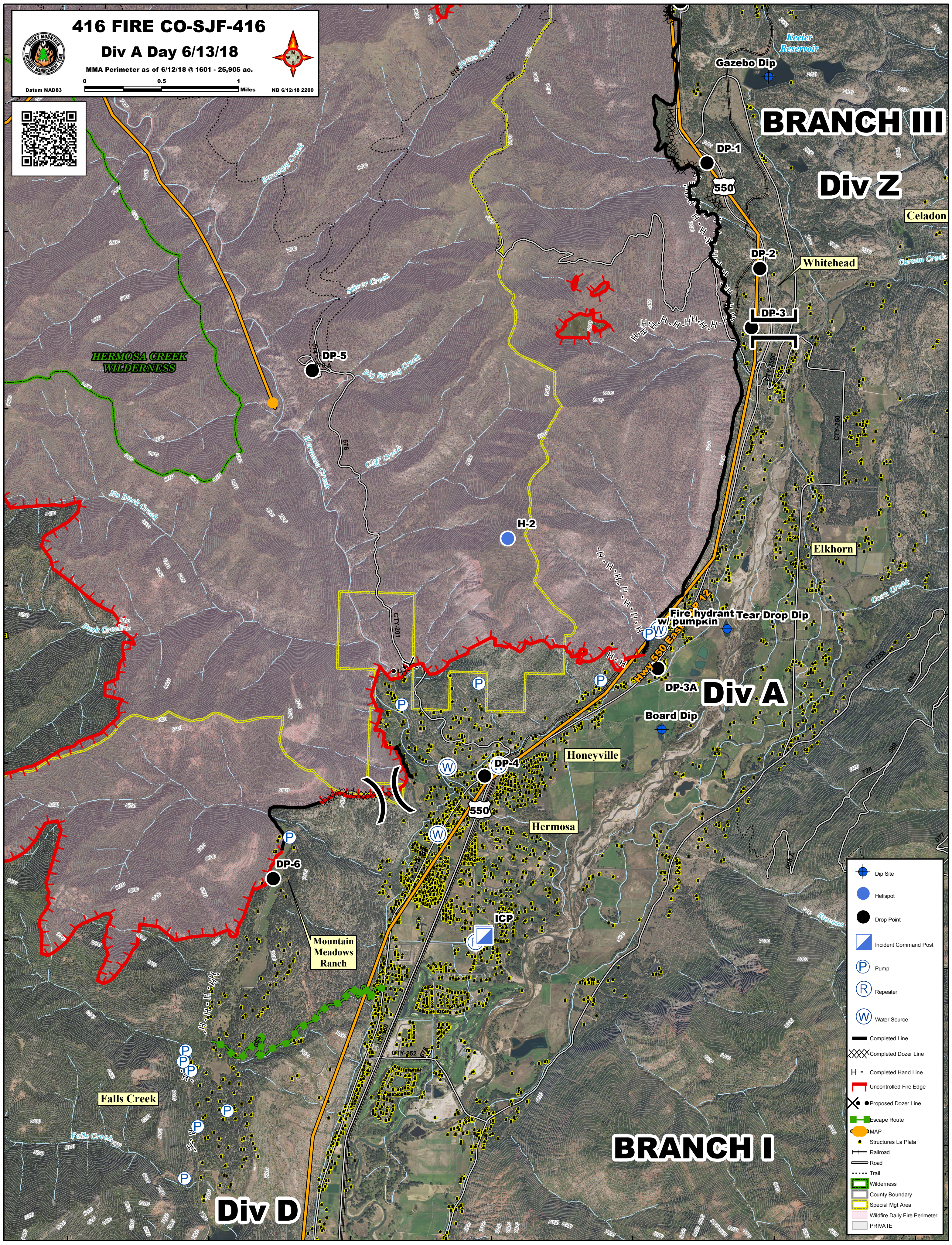
**BRANCH III**  
**Div Z**

**Div A**

**Div D**

**BRANCH I**

- Dip Site
- Helispot
- Drop Point
- Incident Command Post
- Pump
- Repeater
- Water Source
- Completed Line
- Completed Dozer Line
- Completed Hand Line
- Uncontrolled Fire Edge
- Proposed Dozer Line
- Escape Route
- MAP
- Structures La Plata
- Railroad
- Road
- Trail
- Wilderness
- County Boundary
- Special Mgt Area
- Wildfire Daily Fire Perimeter
- PRIVATE



107°53'W

107°52'W

107°51'W

107°50'W

107°49'W

107°48'W

107°47'W