


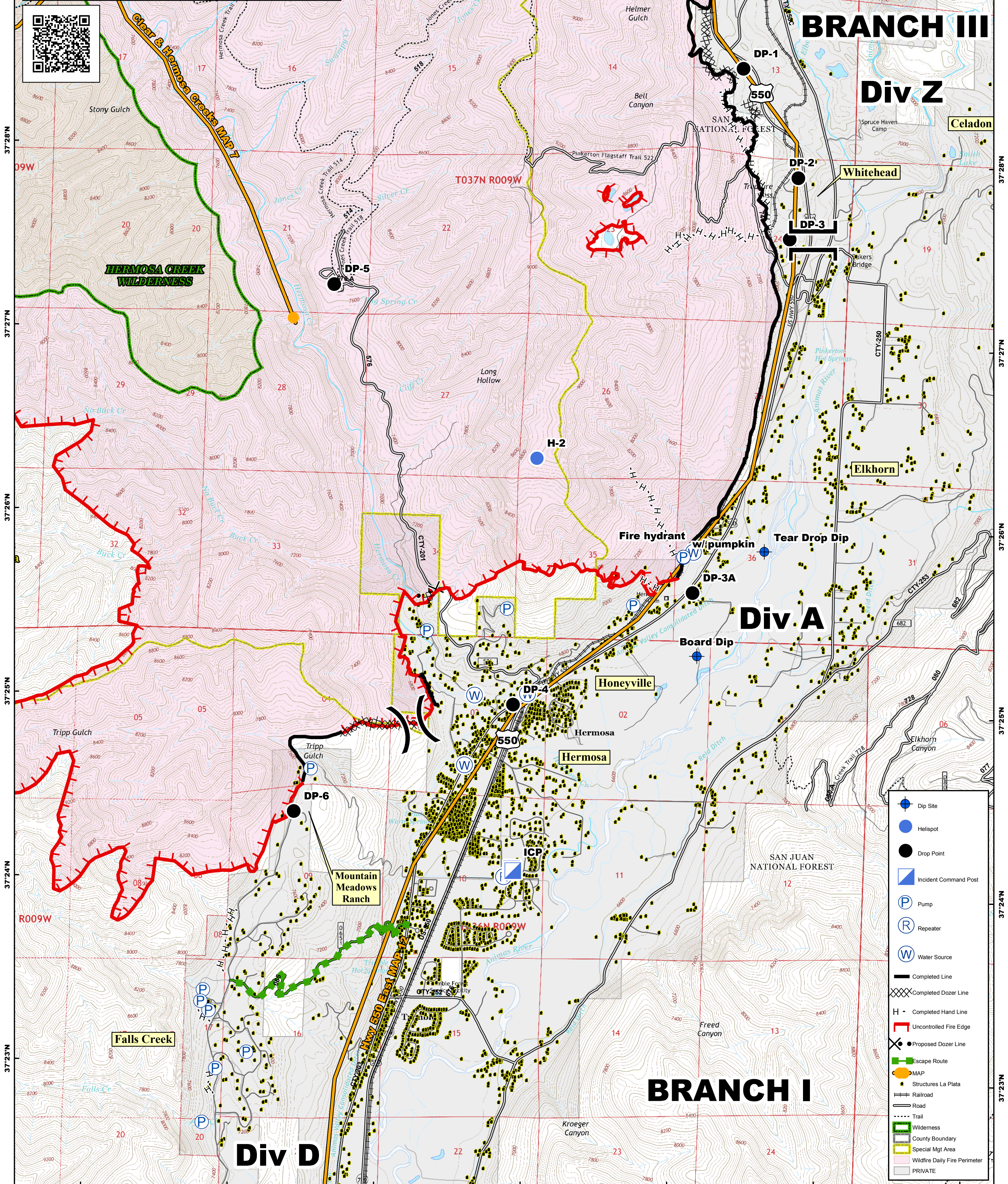


107°53'W 107°52'W 107°51'W 107°50'W 107°49'W 107°48'W

**416 FIRE CO-SJF-416**  
**Div A Day 6/13/18**  
 MMA Perimeter as of 6/12/18 @ 1601 - 25,905 ac.  
 Datum NAD83 0 0.5 1 Miles NB 6/12/18 2200

107°53'W 107°52'W 107°51'W 107°50'W 107°49'W 107°48'W 107°47'W

**BRANCH III**  
**Div Z**

**Div A**

**Div D**

**BRANCH I**

- Dip Site
- Helispot
- Drop Point
- Incident Command Post
- Pump
- Repeater
- Water Source
- Completed Line
- Completed Dozer Line
- Completed Hand Line
- Uncontrolled Fire Edge
- Proposed Dozer Line
- Escape Route
- MAP
- Structures La Plata
- Railroad
- Road
- Trail
- Wilderness
- County Boundary
- Special Mgt Area
- Wildfire Daily Fire Perimeter
- PRIVATE