

107°57'W

107°56'W

107°55'W

107°54'W

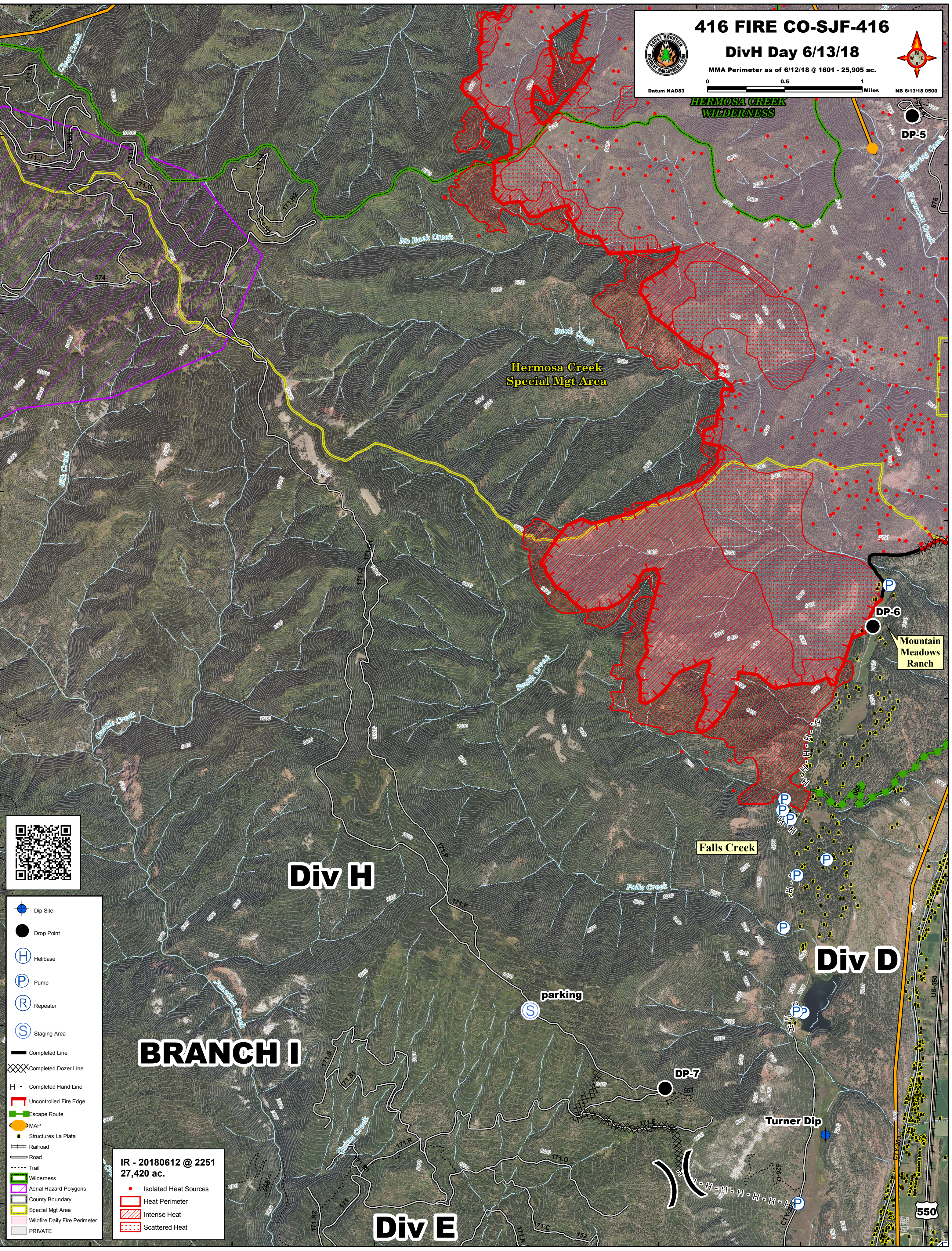
107°53'W

107°52'W

416 FIRE CO-SJF-416
DivH Day 6/13/18
 MMA Perimeter as of 6/12/18 @ 1601 - 25,905 ac.
 Datum NAD83 0 0.5 1 Miles NB 6/13/18 0500

37°27'N
37°26'N
37°25'N
37°24'N
37°23'N
37°22'N
37°21'N

37°27'N
37°26'N
37°25'N
37°24'N
37°23'N
37°22'N
37°21'N



Div H

Div D

Div E

BRANCH I



- Dip Site
- Drop Point
- Helibase
- Pump
- Repeater
- Staging Area
- Completed Line
- Completed Dozer Line
- Completed Hand Line
- Uncontrolled Fire Edge
- Escape Route
- MAP
- Structures La Plata
- Railroad
- Road
- Trail
- Wilderness
- Aerial Hazard Polygons
- County Boundary
- Special Mgt Area
- Wildfire Daily Fire Perimeter
- PRIVATE

IR - 20180612 @ 2251
27,420 ac.

- Isolated Heat Sources
- Heat Perimeter
- Intense Heat
- Scattered Heat

107°57'W 107°56'W 107°55'W 107°54'W 107°53'W 107°52'W 107°51'W