

107°57'W

107°56'W

107°55'W

107°54'W

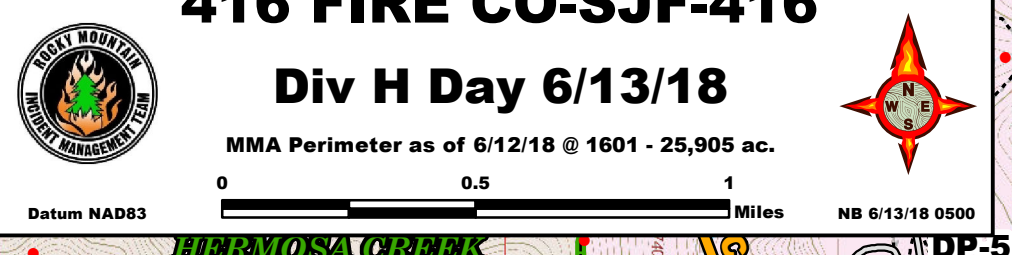
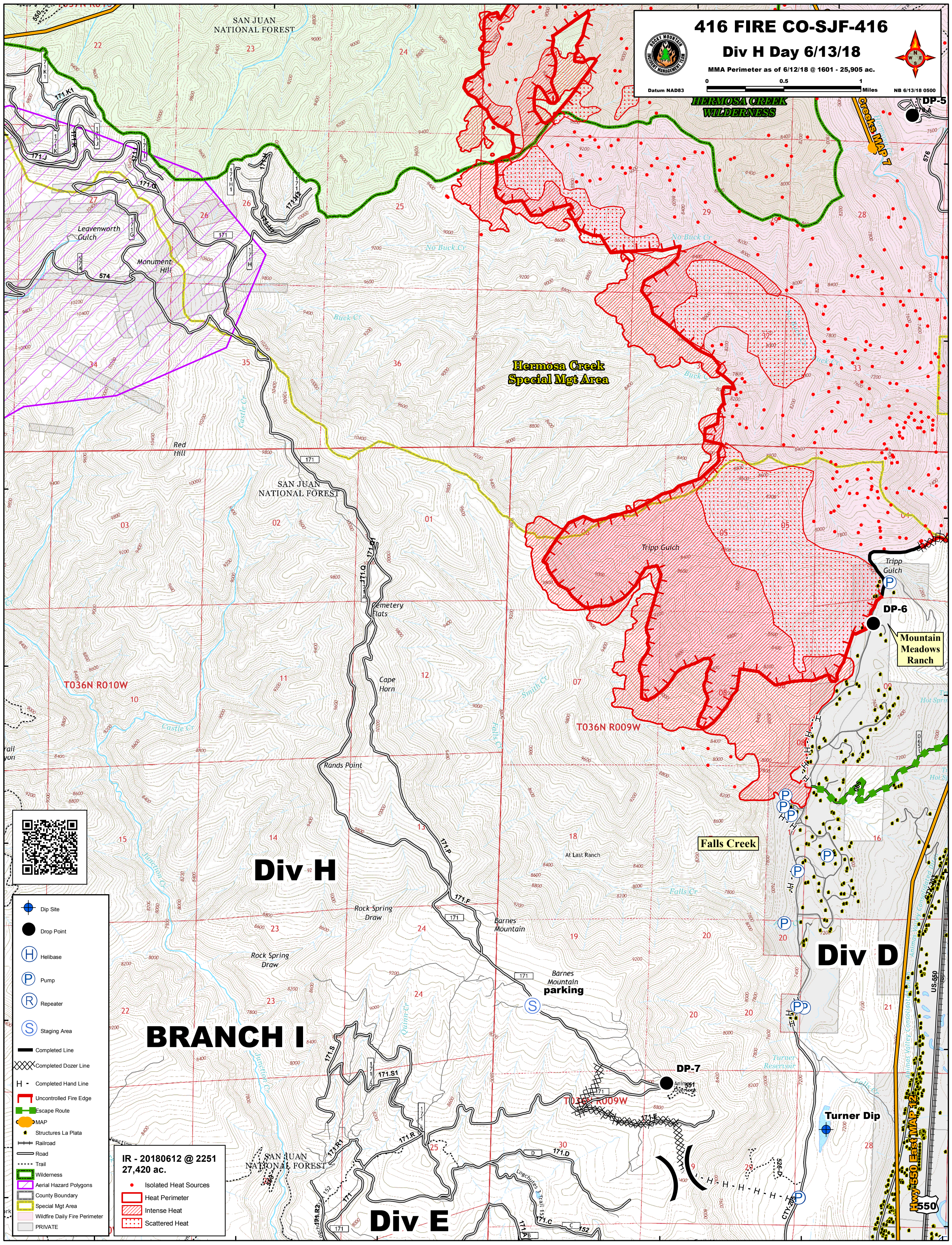
107°53'W

107°52'W

37°27'N  
37°26'N  
37°25'N  
37°24'N  
37°23'N  
37°22'N  
37°21'N

37°27'N  
37°26'N  
37°25'N  
37°24'N  
37°23'N  
37°22'N  
37°21'N

**416 FIRE CO-SJF-416**  
**Div H Day 6/13/18**  
 MMA Perimeter as of 6/12/18 @ 1601 - 25,905 ac.  
 Datum NAD83 0 0.5 1 Miles  
 NB 6/13/18 0500

- Dip Site
- Drop Point
- Helibase
- Pump
- Repeater
- Staging Area
- Completed Line
- Completed Dozer Line
- Completed Hand Line
- Uncontrolled Fire Edge
- Escape Route
- MAP
- Structures La Plata
- Railroad
- Road
- Trail
- Wilderness
- Aerial Hazard Polygons
- County Boundary
- Special Mgt Area
- Wildfire Daily Fire Perimeter
- PRIVATE

**IR - 20180612 @ 2251**  
**27,420 ac.**

- Isolated Heat Sources
- Heat Perimeter
- Intense Heat
- Scattered Heat

**Div H**

**Div D**

**Div E**

**BRANCH I**

Falls Creek

Hermosa Creek Special Mgt Area

Mountain Meadows Ranch

Barnes Mountain parking

Turner Dip

Hwy 550 East MAP 12

US-550

DP-6

DP-7

DP-5

107°57'W

107°56'W

107°55'W

107°54'W

107°53'W

107°52'W

107°51'W