

107°57'W

107°56'W



107°55'W

107°54'W

107°53'W

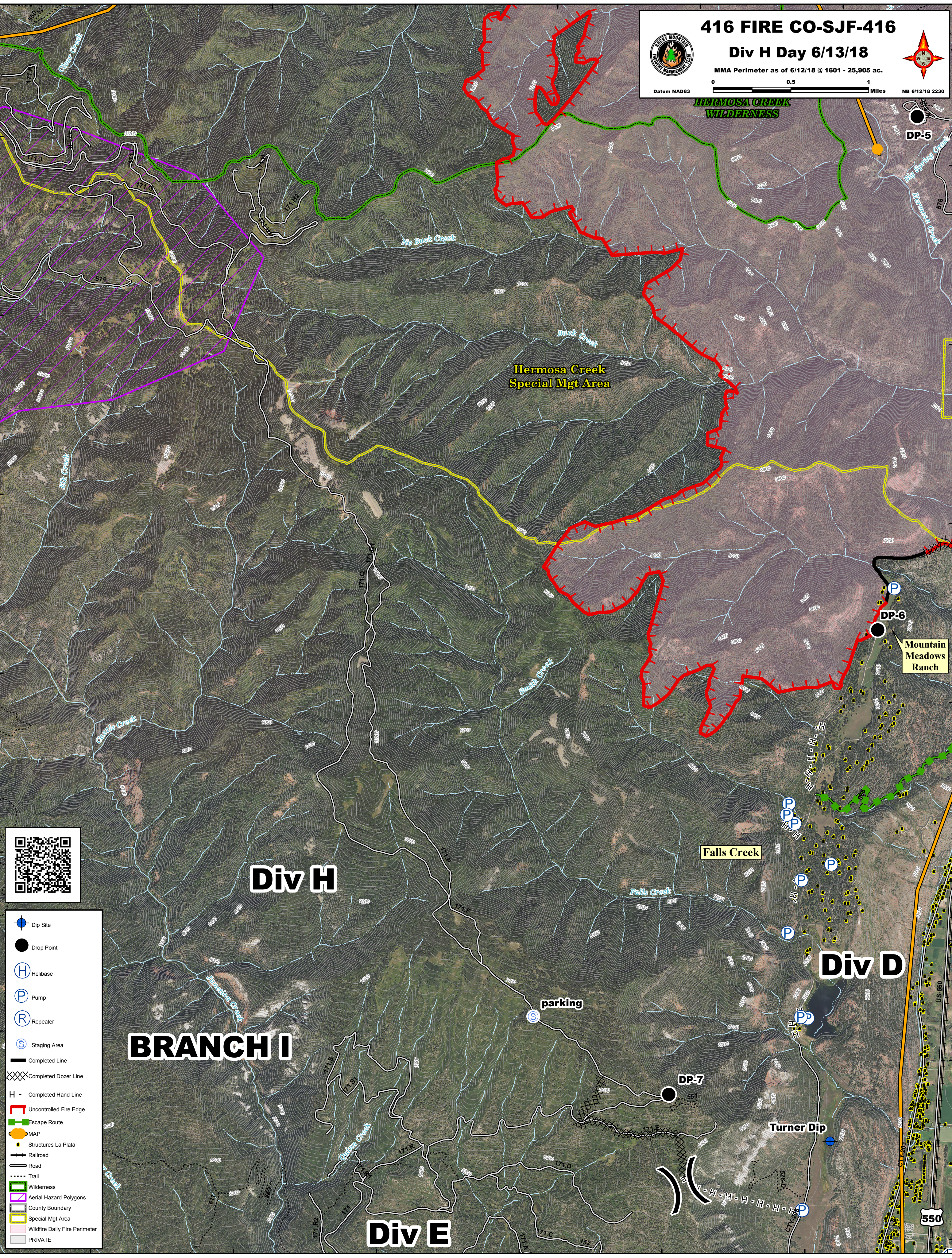
107°52'W

416 FIRE CO-SJF-416
Div H Day 6/13/18
 MMA Perimeter as of 6/12/18 @ 1601 - 25,905 ac.
 Datum NAD83 0 0.5 1 Miles NB 6/12/18 2230

37°27'N
37°26'N
37°25'N
37°24'N
37°23'N
37°22'N
37°21'N

37°27'N
37°26'N
37°25'N
37°24'N
37°23'N
37°22'N
37°21'N



Div H

Div D

Div E

BRANCH I



-  Dip Site
-  Drop Point
-  Helibase
-  Pump
-  Repeater
-  Staging Area
-  Completed Line
-  Completed Dozer Line
-  Completed Hand Line
-  Uncontrolled Fire Edge
-  Escape Route
-  MAP
-  Structures La Plata
-  Railroad
-  Road
- Trail
- Wilderness
- Aerial Hazard Polygons
- County Boundary
- Special Mgt Area
- Wildfire Daily Fire Perimeter
- PRIVATE

107°57'W

107°56'W

107°55'W

107°54'W

107°53'W

107°52'W

107°51'W