

107°57'W

107°56'W

107°55'W

107°54'W

107°53'W

107°52'W

37°27'N

37°26'N

37°25'N

37°24'N

37°23'N

37°22'N

37°21'N

37°27'N

37°26'N

37°25'N

37°24'N

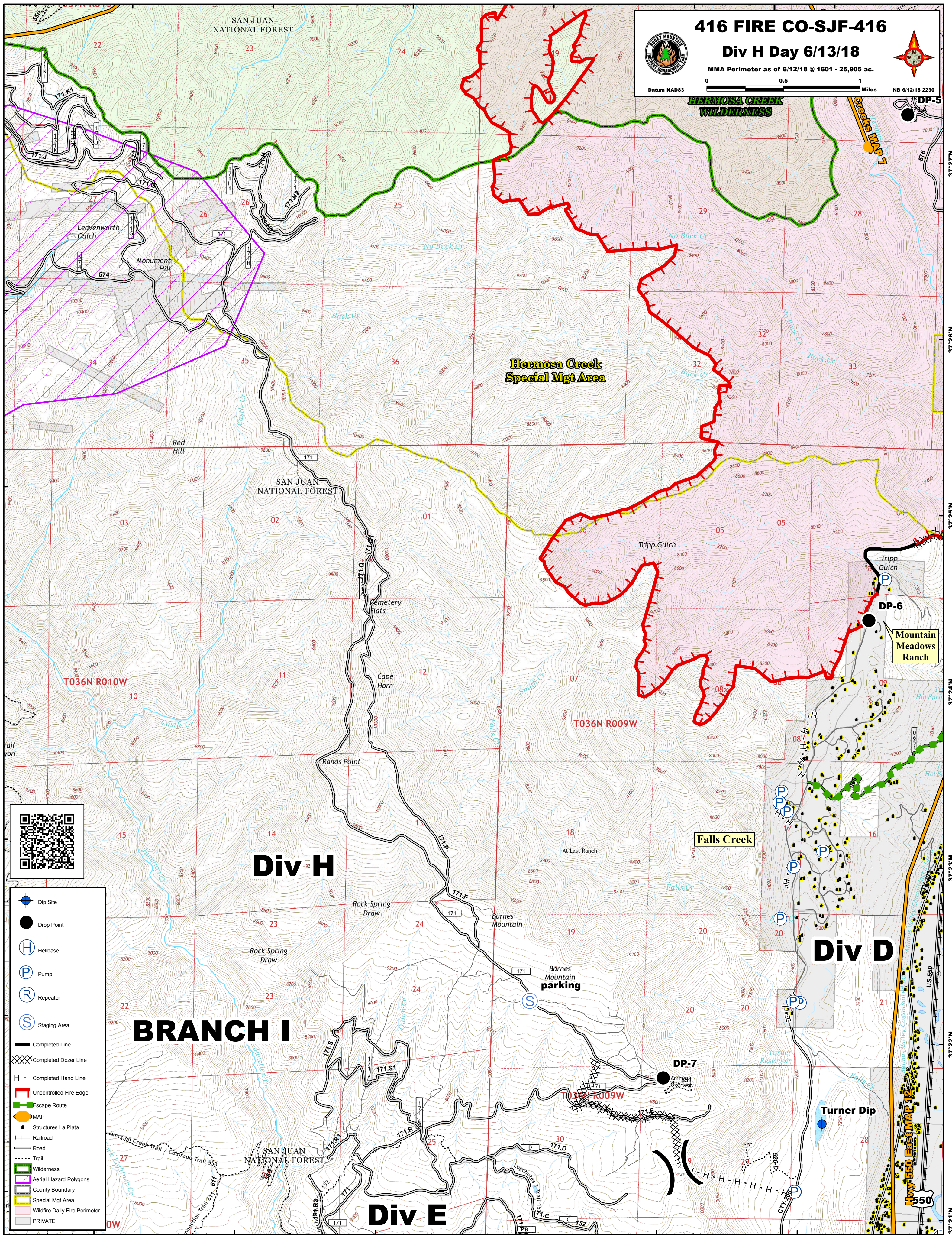
37°23'N

37°22'N

37°21'N

**416 FIRE CO-SJF-416**  
**Div H Day 6/13/18**  
 MMA Perimeter as of 6/12/18 @ 1601 - 25,905 ac.

Datum NAD83 0 0.5 1 Miles NB 6/12/18 2230



**Div H**

**Div D**

**Div E**

**BRANCH I**



- Dip Site
- Drop Point
- Helibase
- Pump
- Repeater
- Staging Area
- Completed Line
- Completed Dozer Line
- Completed Hand Line
- Uncontrolled Fire Edge
- Escape Route
- MAP
- Structures La Plata
- Railroad
- Road
- Trail
- Wilderness
- Aerial Hazard Polygons
- County Boundary
- Special Mgt Area
- Wildfire Daily Fire Perimeter
- PRIVATE

Mountain Meadows Ranch

Falls Creek

Barnes Mountain parking

Turner Dip

Hwy 550 East MAP 12