

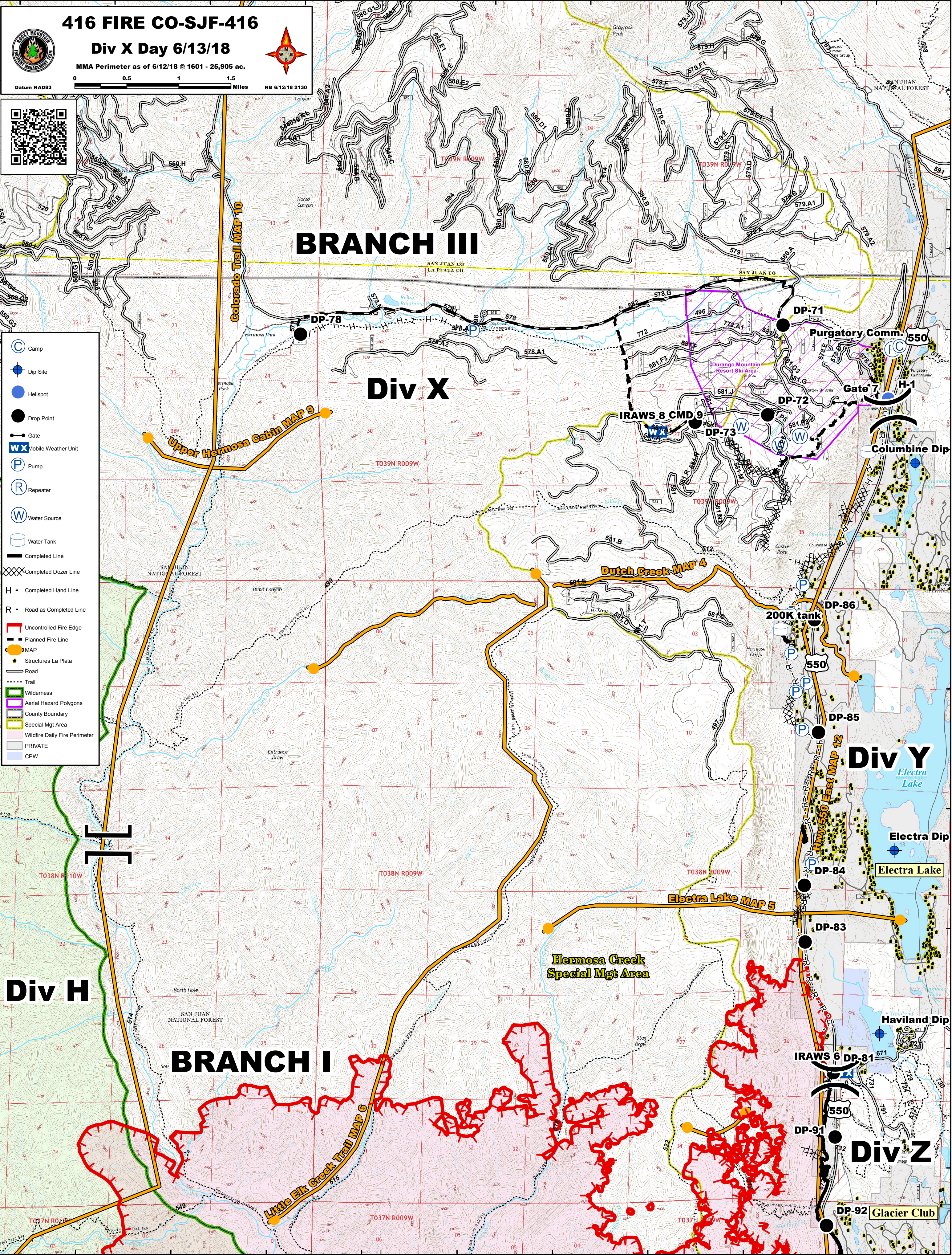
107°58'W 107°57'W 107°56'W 107°55'W 107°54'W 107°53'W 107°52'W 107°51'W 107°50'W 107°49'W

37°40'N 37°39'N 37°38'N 37°37'N 37°36'N 37°35'N 37°34'N 37°33'N 37°32'N 37°31'N

**416 FIRE CO-SJF-416**  
**Div X Day 6/13/18**  
 MMA Perimeter as of 6/12/18 @ 1601 - 25,905 ac.  
 Datum NAD83 0 0.5 1 1.5 Miles NB 6/12/18 2130



- Camp
- Dip Site
- Helispot
- Drop Point
- Gate
- Mobile Weather Unit
- Pump
- Repeater
- Water Source
- Water Tank
- Completed Line
- Completed Dozer Line
- Completed Hand Line
- Road as Completed Line
- Uncontrolled Fire Edge
- Planned Fire Line
- MAP
- Structures La Plata
- Road
- Trail
- Wilderness
- Aerial Hazard Polygons
- County Boundary
- Special Mgt Area
- Wildfire Daily Fire Perimeter
- PRIVATE
- CPW



107°57'W 107°56'W 107°55'W 107°54'W 107°53'W 107°52'W 107°51'W 107°50'W 107°49'W