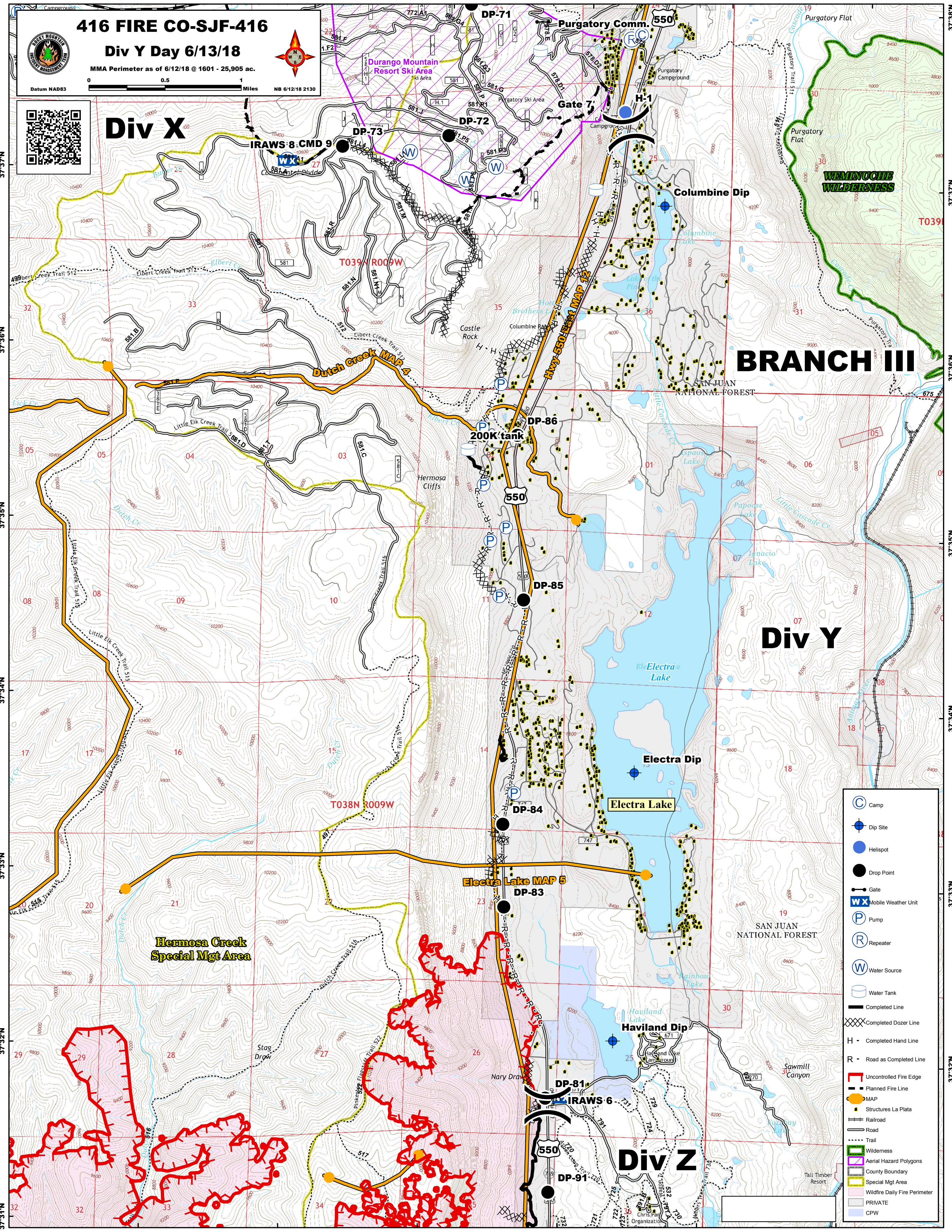


107°53'W 107°52'W 107°51'W 107°50'W 107°49'W 107°48'W 107°47'W

416 FIRE CO-SJF-416
Div Y Day 6/13/18
 MMA Perimeter as of 6/12/18 @ 1601 - 25,905 ac.
 Datum NAD83 0 0.5 1 Miles NB 6/12/18 2130



Div X



BRANCH III

Div Y

Div Z

- Camp
- Dip Site
- Helispot
- Drop Point
- Gate
- Mobile Weather Unit
- Pump
- Repeater
- Water Source
- Water Tank
- Completed Line
- Completed Dozer Line
- Completed Hand Line
- Road as Completed Line
- Uncontrolled Fire Edge
- Planned Fire Line
- MAP
- Structures La Plata
- Railroad
- Road
- Trail
- Wilderness
- Aerial Hazard Polygons
- County Boundary
- Special Mgt Area
- Wildfire Daily Fire Perimeter
- PRIVATE
- CPW

107°52'W 107°51'W 107°50'W 107°49'W 107°48'W 107°47'W