

107°52'W

107°51'W

107°50'W

107°49'W

107°48'W

107°47'W

37°33'N

37°32'N

37°31'N

37°30'N

37°29'N

37°28'N

37°27'N

37°27'N

37°33'N

37°32'N

37°31'N

37°30'N

37°29'N

37°28'N

37°27'N

37°27'N

**416 FIRE CO-SJF-416**  
**Div Z Day 6/13/18**  
 MMA Perimeter as of 6/12/18 @ 1601 - 25,905 ac.  
 Datum NAD83 0 0.5 1 Miles NB 6/12/18 2200



**Hermosa Creek  
Special Mgt Area**



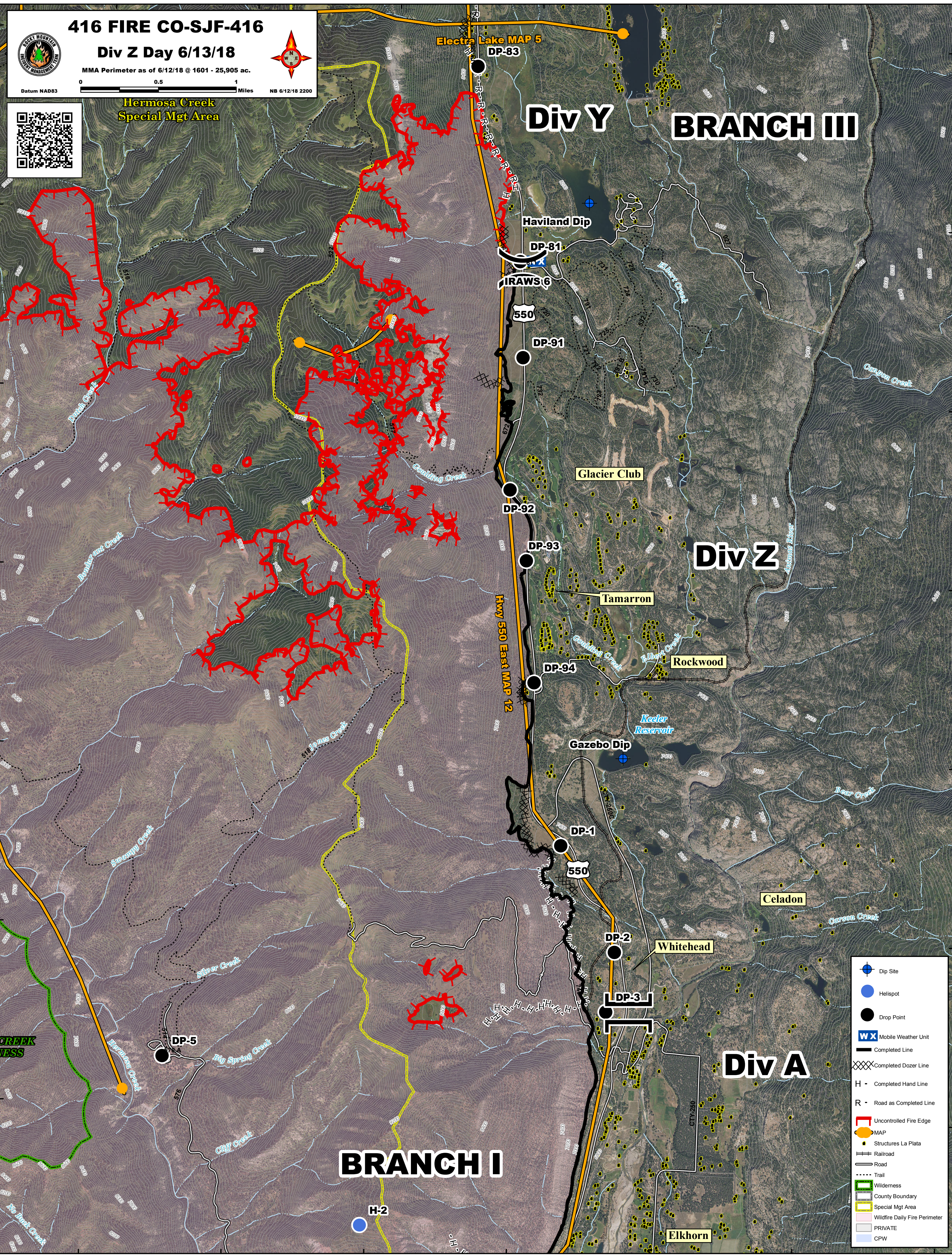
**Div Y BRANCH III**

**Div Z**

**Div A**

**BRANCH I**

- Dip Site
- Helispot
- Drop Point
- Mobile Weather Unit
- Completed Line
- Completed Dozer Line
- Completed Hand Line
- Road as Completed Line
- Uncontrolled Fire Edge
- MAP
- Structures La Plata
- Railroad
- Road
- Trail
- Wilderness
- County Boundary
- Special Mgt Area
- Wildfire Daily Fire Perimeter
- PRIVATE
- CPW



107°52'W

107°51'W

107°50'W

107°49'W

107°48'W

107°47'W

107°46'W