

107°53'W

107°52'W

107°51'W

107°50'W

107°49'W

107°48'W

416 FIRE CO-SJF-416

Div A, D Day 6/19/18

IR 416 as of 6/17/18 @ 2145 - 34,161 ac.



Datum NAD83 0 0.5 1 Miles NB 6/18/18 2130



Div Z

HERMOSA CREEK WILDERNESS

Hermosa Creek Special Mgt Area

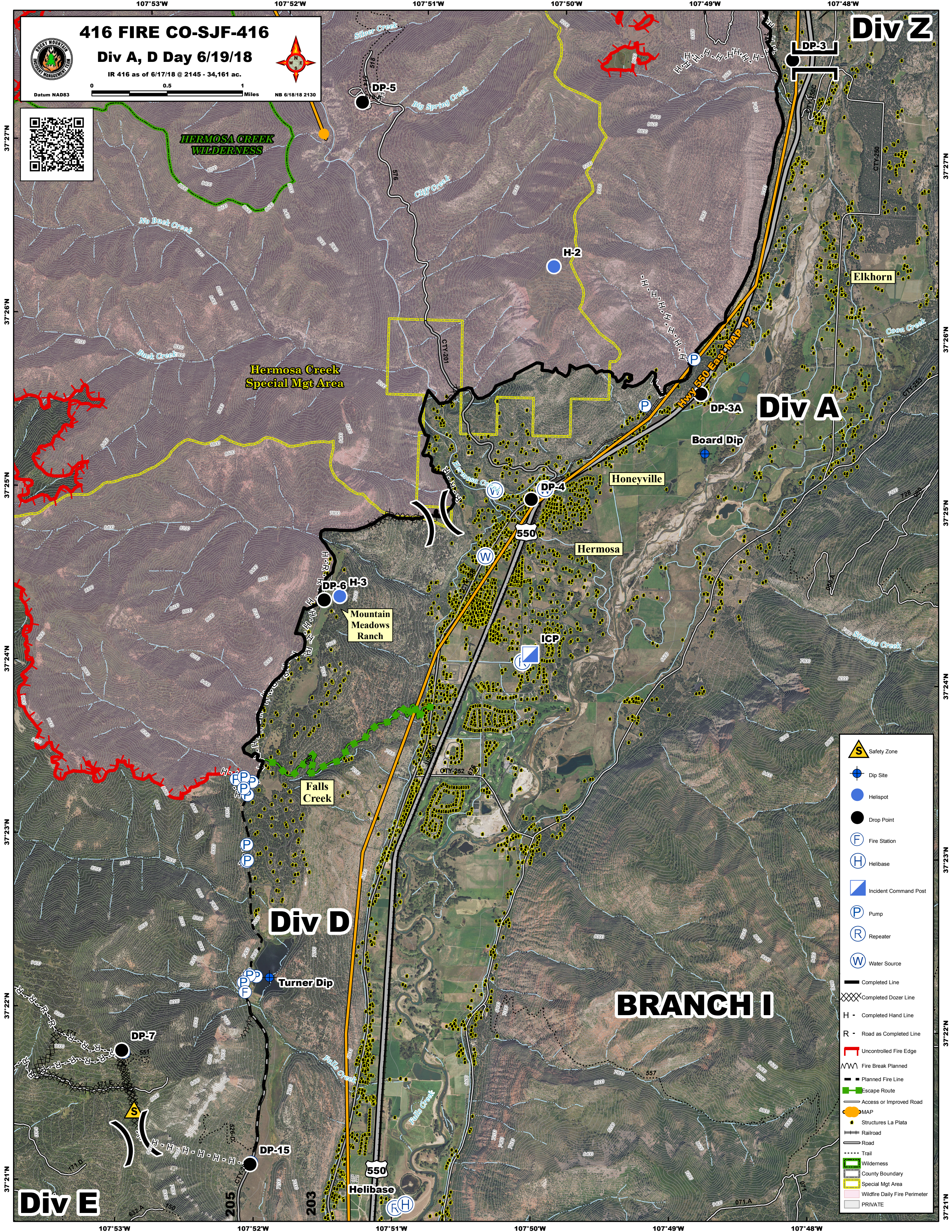
Div A

Div D

BRANCH I

Div E

- Safety Zone
- Dip Site
- Helispot
- Drop Point
- Fire Station
- Helibase
- Incident Command Post
- Pump
- Repeater
- Water Source
- Completed Line
- Completed Dozer Line
- Completed Hand Line
- Road as Completed Line
- Uncontrolled Fire Edge
- Fire Break Planned
- Planned Fire Line
- Escape Route
- Access or Improved Road
- MAP
- Structures La Plata
- Railroad
- Road
- Trail
- Wilderness
- County Boundary
- Special Mgt Area
- Wildfire Daily Fire Perimeter
- PRIVATE



37°27'N
37°26'N
37°25'N
37°24'N
37°23'N
37°22'N
37°21'N

37°27'N
37°26'N
37°25'N
37°24'N
37°23'N
37°22'N
37°21'N

107°53'W 107°52'W 107°51'W 107°50'W 107°49'W 107°48'W