

107°57'W

107°56'W

107°55'W

107°54'W

107°53'W

107°52'W

107°51'W



416 FIRE CO-SJF-416

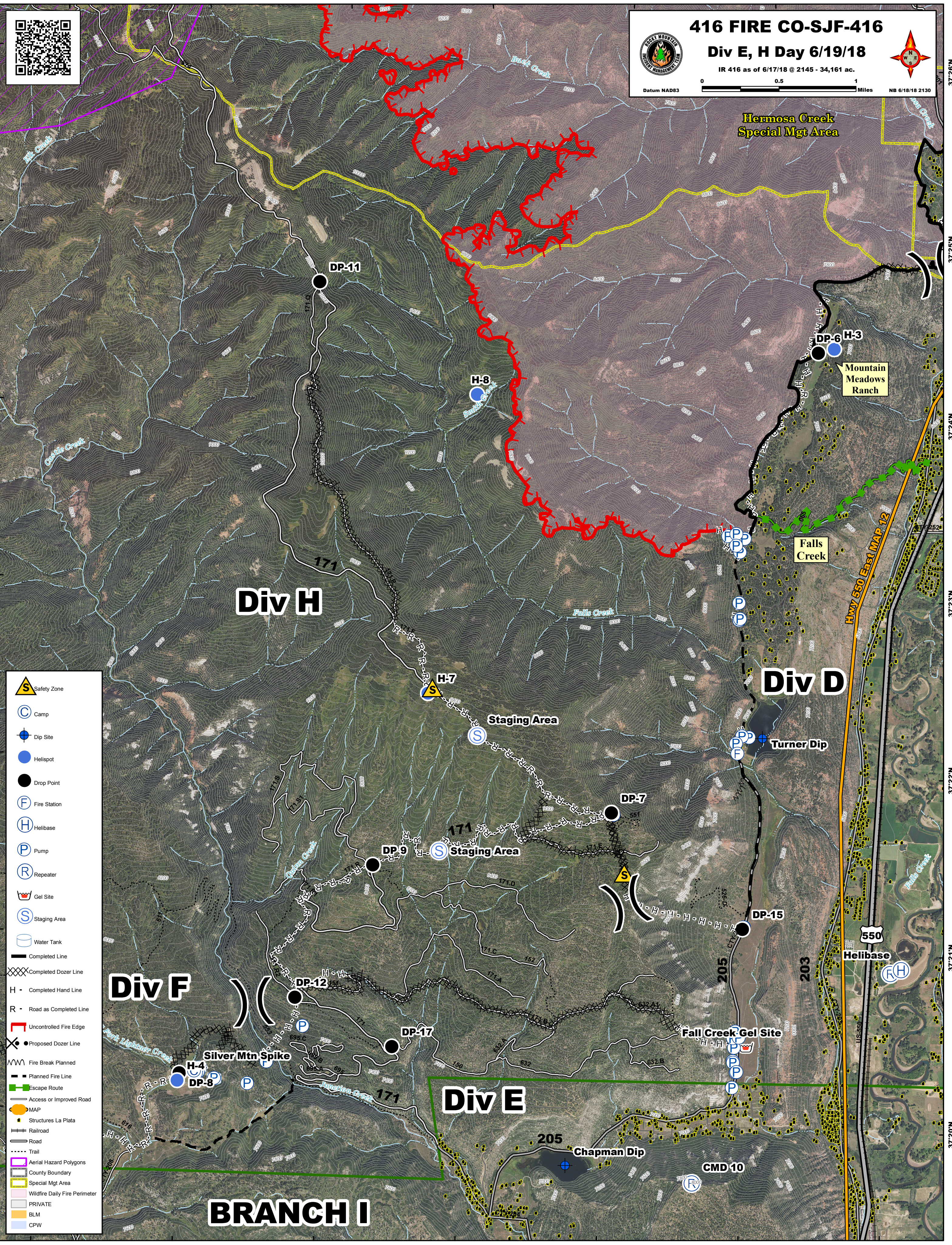
Div E, H Day 6/19/18

IR 416 as of 6/17/18 @ 2145 - 34,161 ac.

Datum NAD83 0 0.5 1 Miles NB 6/18/18 2130



37°26'N
37°25'N
37°24'N
37°23'N
37°22'N
37°21'N
37°20'N



- Safety Zone
- Camp
- Dip Site
- Helispot
- Drop Point
- Fire Station
- Helibase
- Pump
- Repeater
- Gel Site
- Staging Area
- Water Tank
- Completed Line
- Completed Dozer Line
- Completed Hand Line
- Road as Completed Line
- Uncontrolled Fire Edge
- Proposed Dozer Line
- Fire Break Planned
- Planned Fire Line
- Escape Route
- Access or Improved Road
- MAP
- Structures La Plata
- Railroad
- Road
- Trail
- Aerial Hazard Polygons
- County Boundary
- Wildfire Daily Fire Perimeter
- PRIVATE
- BLM
- CPW

BRANCH I