

107°58'W

107°57'W



107°56'W

107°55'W

107°54'W

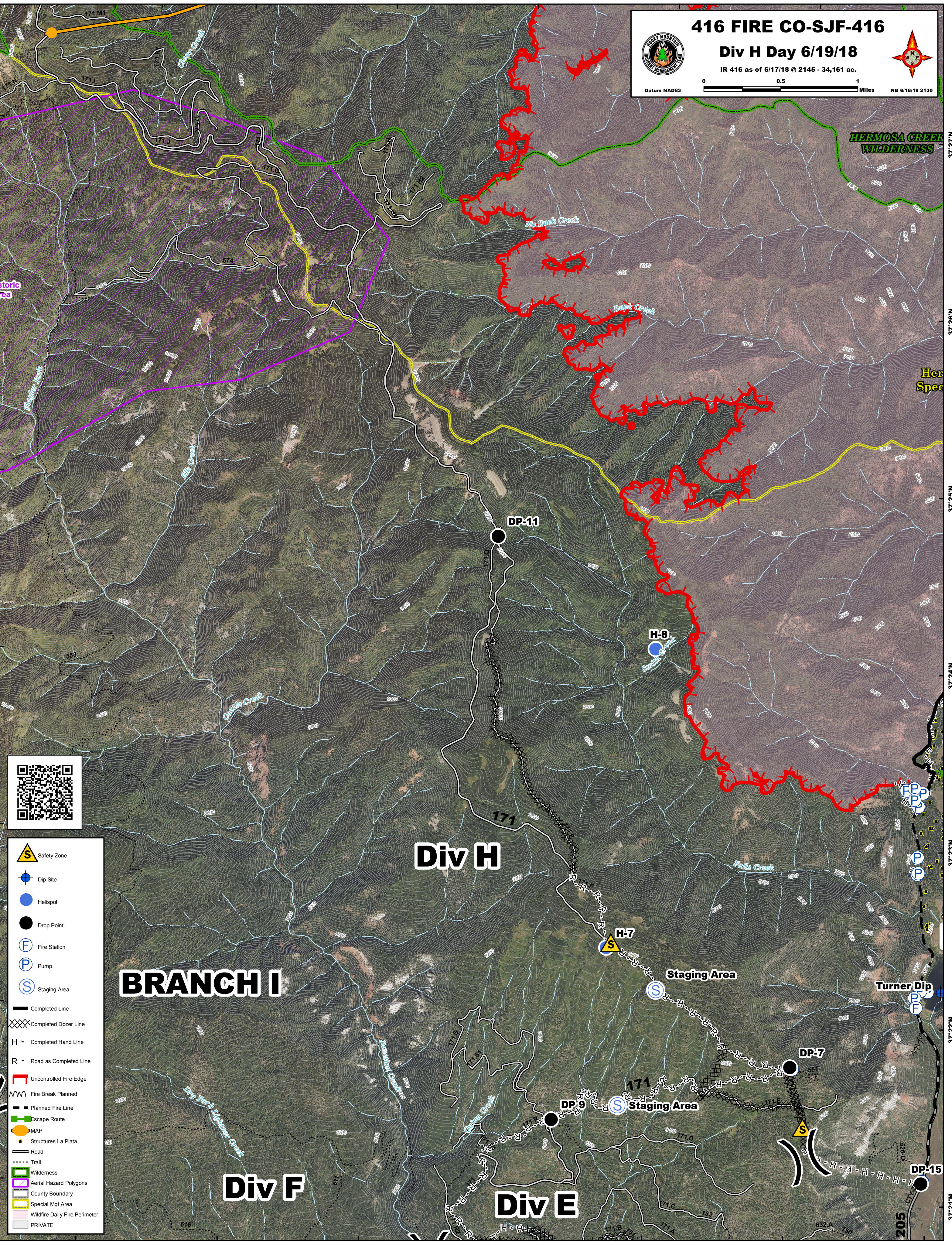
107°53'W

416 FIRE CO-SJF-416
Div H Day 6/19/18
 IR 416 as of 6/17/18 @ 2145 - 34,161 ac.

Datum NAD83 0 0.5 1 Miles NB 6/18/18 2130

37°27'N
37°26'N
37°25'N
37°24'N
37°23'N
37°22'N
37°21'N



-  Safety Zone
-  Dip Site
-  Helispot
-  Drop Point
-  Fire Station
-  Pump
-  Staging Area
-  Completed Line
-  Completed Dozer Line
-  Completed Hand Line
-  Road as Completed Line
-  Uncontrolled Fire Edge
-  Fire Break Planned
-  Planned Fire Line
-  Escape Route
-  MAP
-  Structures La Plata
- Road
- Trail
- Wilderness
- Aerial Hazard Polygons
- County Boundary
- Special Mgt Area
- Wildfire Daily Fire Perimeter
- PRIVATE

BRANCH I

Div H

Div F

Div E

107°58'W

107°57'W

107°56'W

107°55'W

107°54'W

107°53'W

107°52'W