

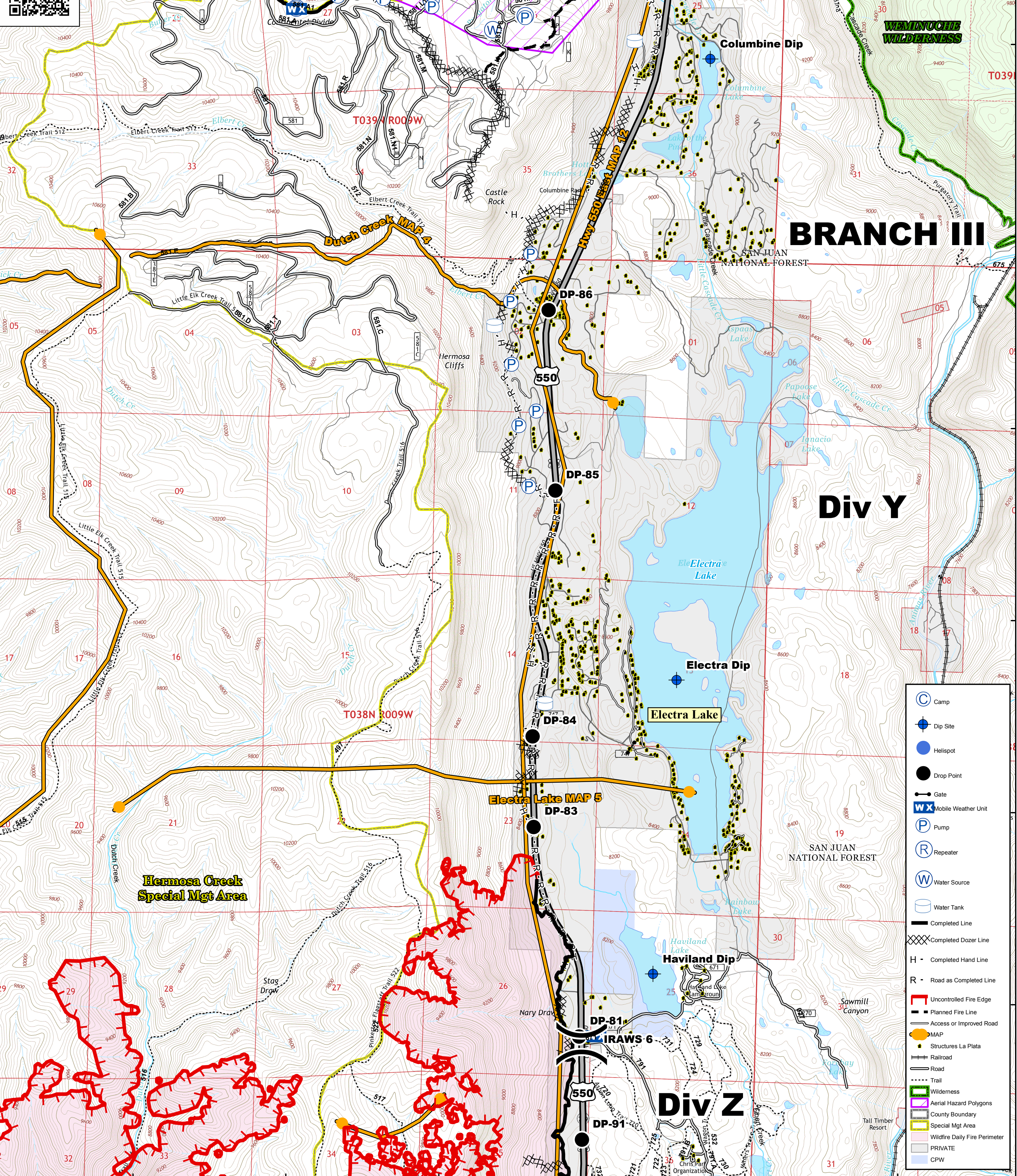


107°53'W 107°52'W 107°51'W 107°50'W 107°49'W 107°48'W 107°47'W

416 FIRE CO-SJF-416
Div Y Day 6/19/18
 IR 416 as of 6/17/18 @ 2145 - 34,161 ac.
 Datum NAD83 0 0.5 1 Miles NB 6/18/18 2130


Div X



BRANCH III

Div Y

Div Z

	Camp
	Dip Site
	Helispot
	Drop Point
	Gate
	Mobile Weather Unit
	Pump
	Repeater
	Water Source
	Water Tank
	Completed Line
	Completed Dozer Line
	Completed Hand Line
	Road as Completed Line
	Uncontrolled Fire Edge
	Planned Fire Line
	Access or Improved Road
	MAP
	Structures La Plata
	Railroad
	Road
	Trail
	Wilderness
	Aerial Hazard Polygons
	County Boundary
	Special Mgt Area
	Wildfire Daily Fire Perimeter
	PRIVATE
	CPW

107°52'W 107°51'W 107°50'W 107°49'W 107°48'W 107°47'W