


107°53'W 107°52'W 107°51'W 107°50'W 107°49'W 107°48'W

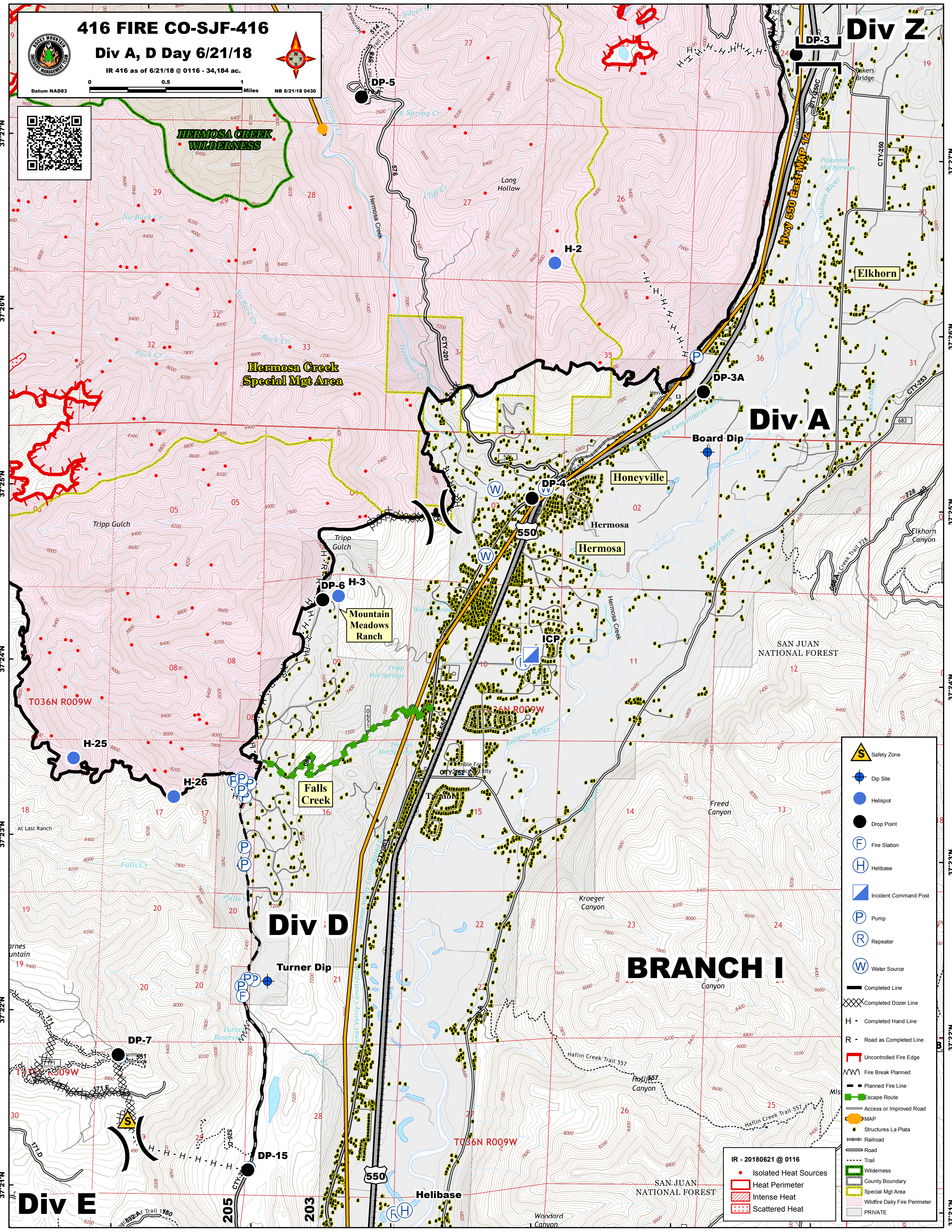
**416 FIRE CO-SJF-416**  
**Div A, D Day 6/21/18**  
 IR 416 as of 6/21/18 @ 0116 - 34,184 ac.



Datum NAD83 0 0.5 1 Miles NB 6/21/18 0430



**Div Z**



	Safety Zone
	Dip Site
	Hellspot
	Drop Point
	Fire Station
	Helibase
	Incident Command Post
	Pump
	Repeater
	Water Source
	Completed Line
	Completed Dozer Line
	Completed Hand Line
	Road as Completed Line
	Uncontrolled Fire Edge
	Fire Break Planned
	Planned Fire Line
	Escape Route
	Access or Improved Road
	MAP
	Structures La Plata
	Railroad
	Road
	Trail
	Wilderness
	County Boundary
	Special Mgt Area
	Wildfire Daily Fire Perimeter
	PRIVATE

IR - 20180621 @ 0116

	Isolated Heat Sources
	Heat Perimeter
	Intense Heat
	Scattered Heat

107°53'W 107°52'W 107°51'W 107°50'W 107°49'W 107°48'W