

# 416 FIRE CO-SJF-416 Div Y Day 7/1/2018

IR 416 as of 06/30/2018 @ 2354 - 49,301

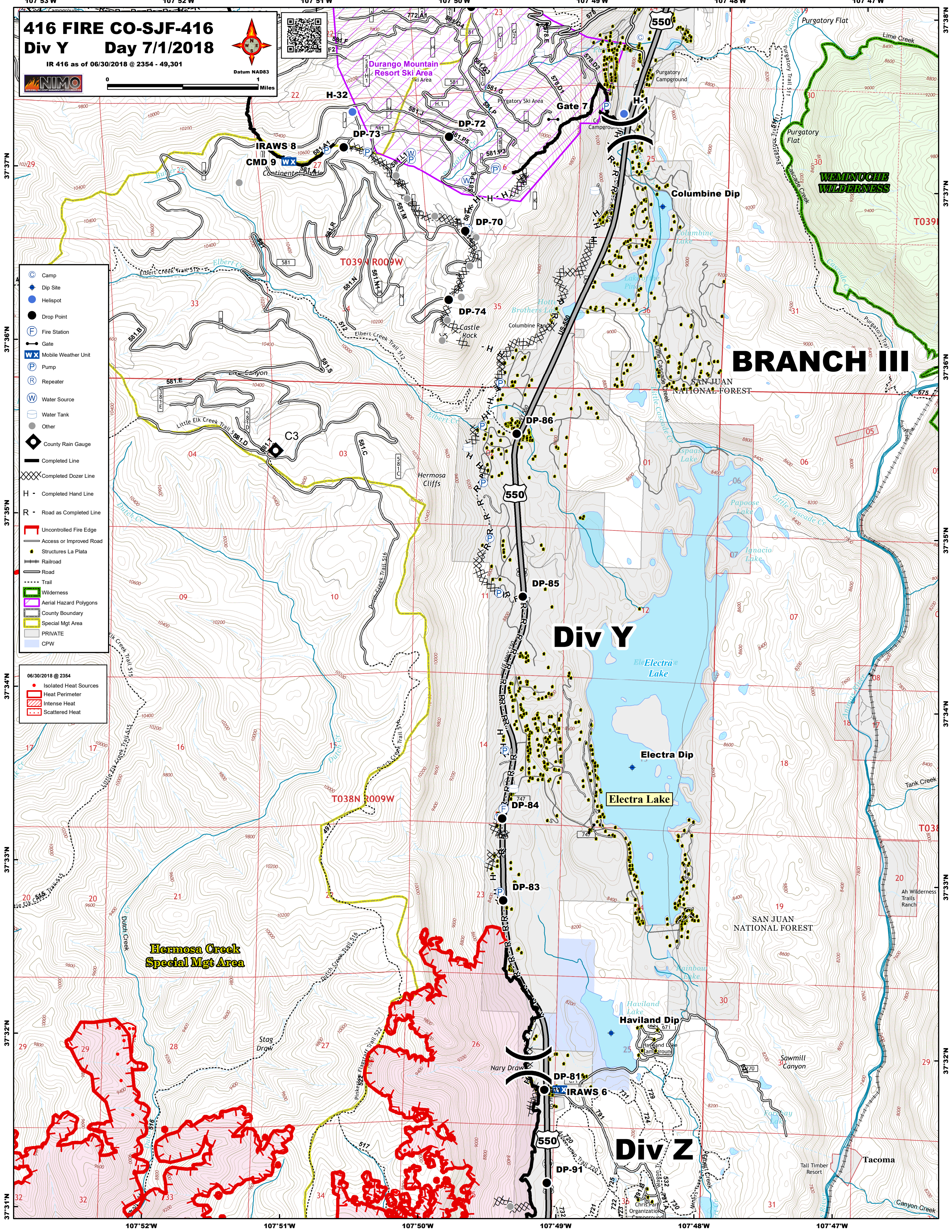


Datum NAD83

1 Miles

- Camp
- Dip Site
- Helispot
- Drop Point
- Fire Station
- Gate
- Mobile Weather Unit
- Pump
- Repeater
- Water Source
- Water Tank
- Other
- County Rain Gauge
- Completed Line
- Completed Dozer Line
- H - Completed Hand Line
- R - Road as Completed Line
- Uncontrolled Fire Edge
- Access or Improved Road
- Structures La Plata
- Railroad
- Road
- Trail
- Wilderness
- Aerial Hazard Polygons
- County Boundary
- Special Mgt Area
- PRIVATE
- CPW
- Isolated Heat Sources
- Heat Perimeter
- Intense Heat
- Scattered Heat

- 06/30/2018 @ 2354
- Isolated Heat Sources
- Heat Perimeter
- Intense Heat
- Scattered Heat



## BRANCH III

## Div Y

## Div Z

### Hermosa Creek Special Mgt Area

### WEMINUCHE WILDERNESS

### SAN JUAN NATIONAL FOREST

### Tacoma

### IRAWS 6

### CMD 9 WX

### C3

### Electra Dip

### Electra Lake

### Haviland Dip

### Haviland Lake

### IRAWS 8

### DP-72

### DP-73

### DP-70

### DP-74

### DP-86

### DP-85

### DP-84

### DP-83

### DP-81

### DP-91

### DP-72

### DP-73

### DP-70

### DP-74

### DP-86

### DP-85

### DP-84

### DP-83

### DP-81

### DP-91