



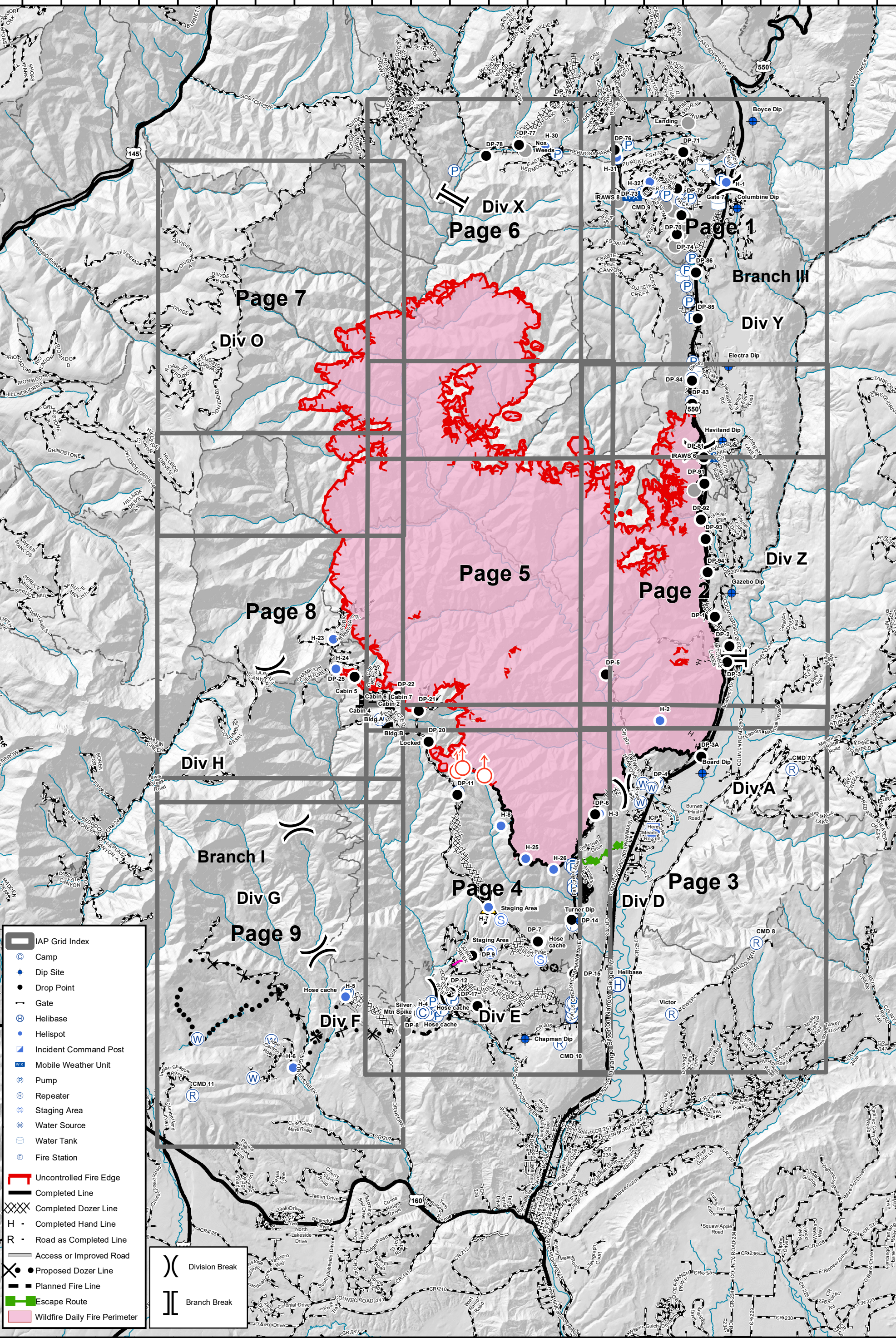
416 Fire - CO-SJF-416 IAP Grid Index - 7/1/18

0 0.5 1 2 Miles



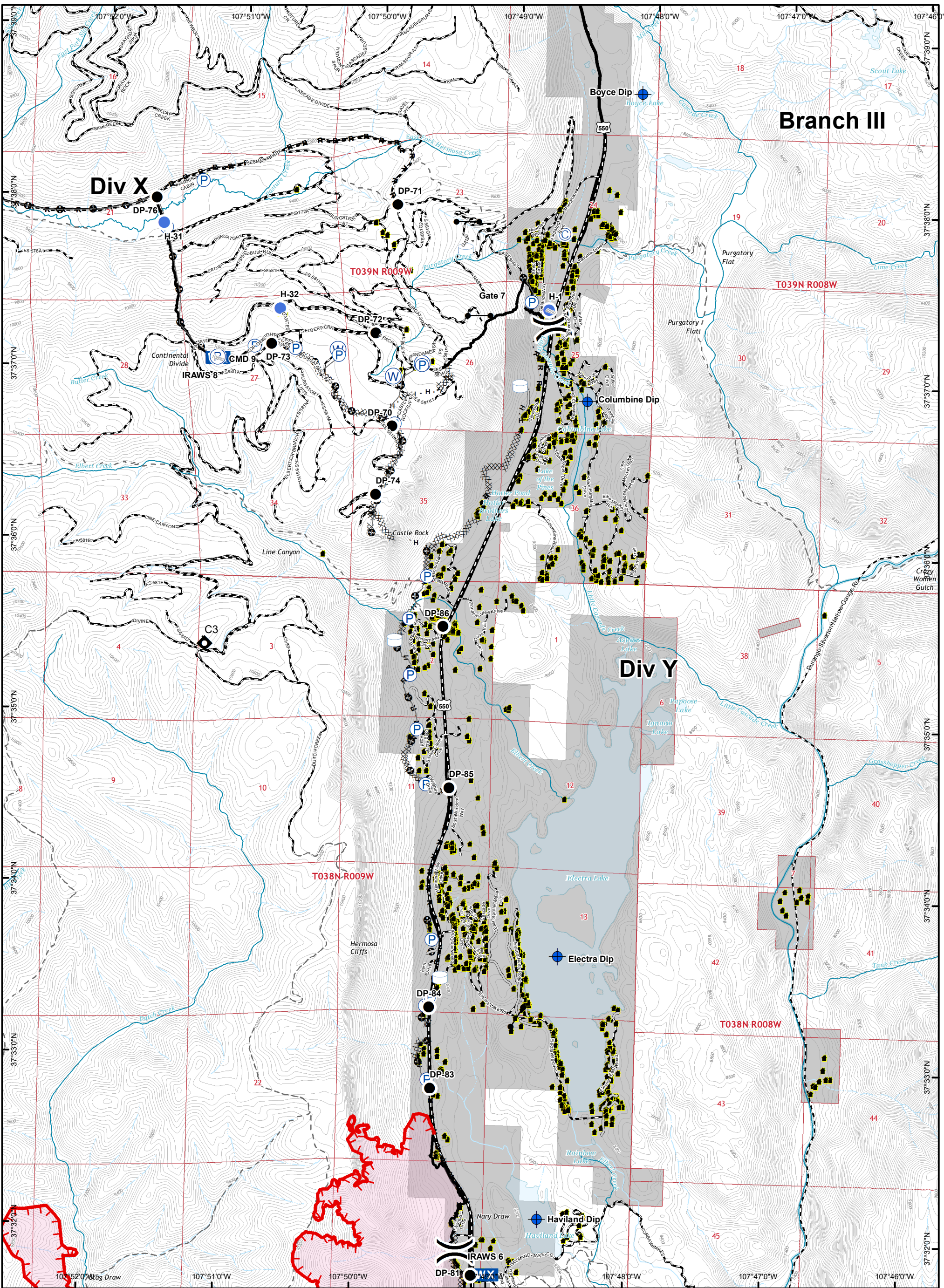
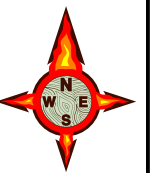
Datum: NAD 83

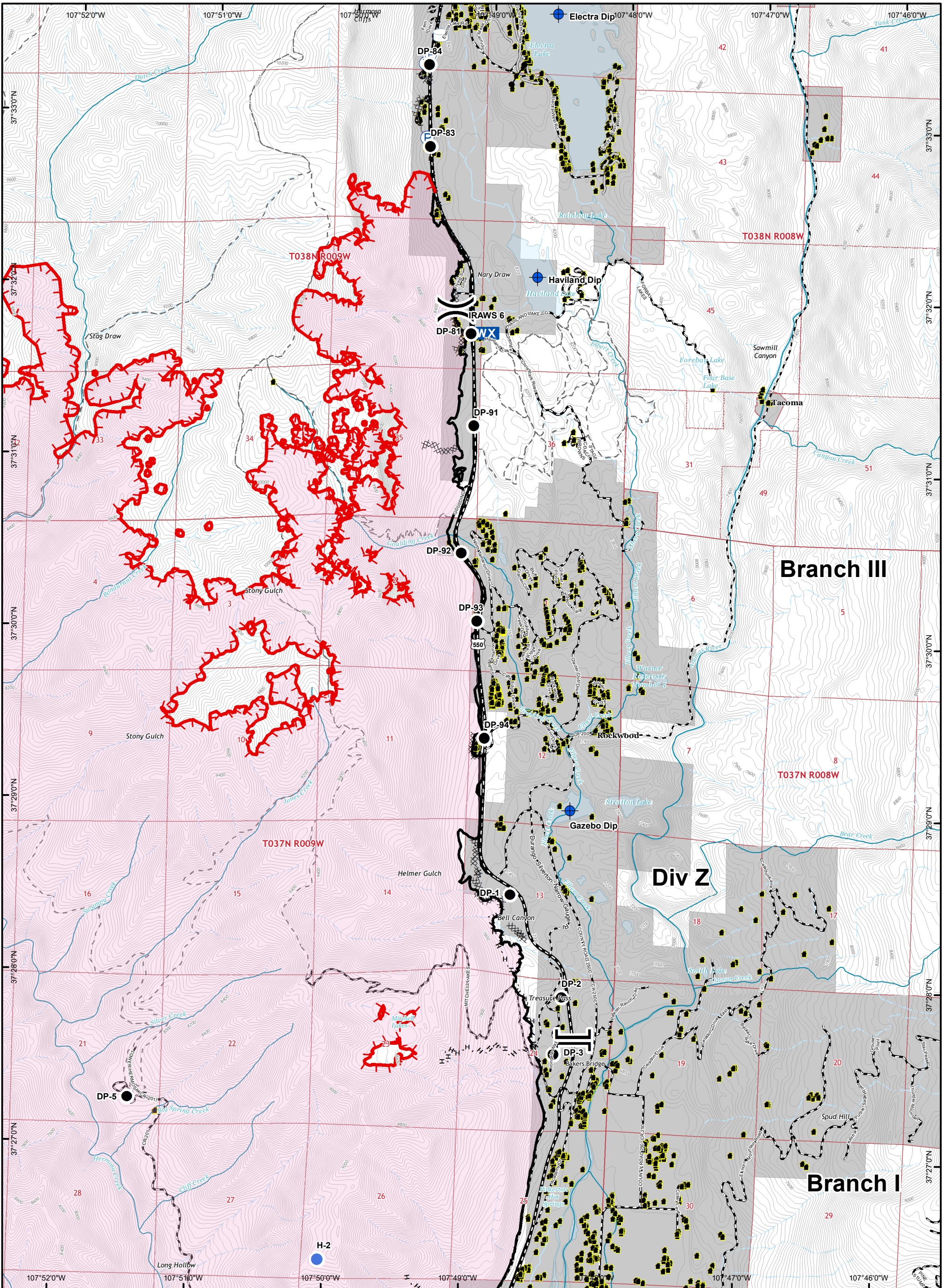
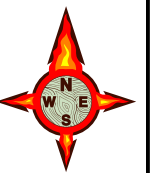
108°7'0"W 108°6'0"W 108°5'0"W 108°4'0"W 108°3'0"W 108°2'0"W 108°1'0"W 108°0'0"W 107°59'0"W 107°57'0"W 107°55'0"W 107°53'0"W 107°51'0"W 107°49'0"W 107°47'0"W 107°45'0"W

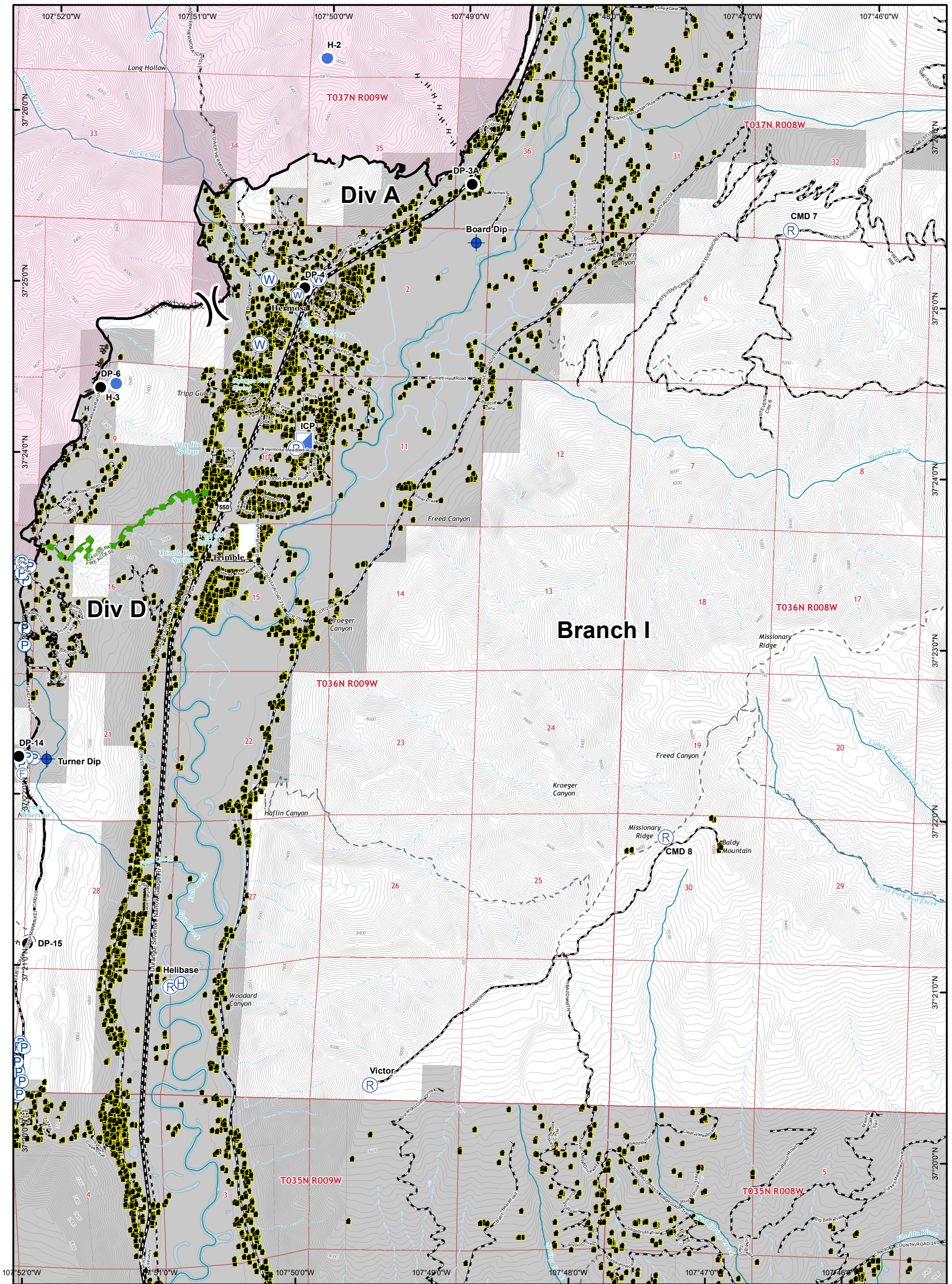
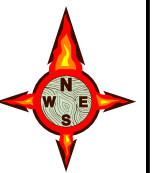


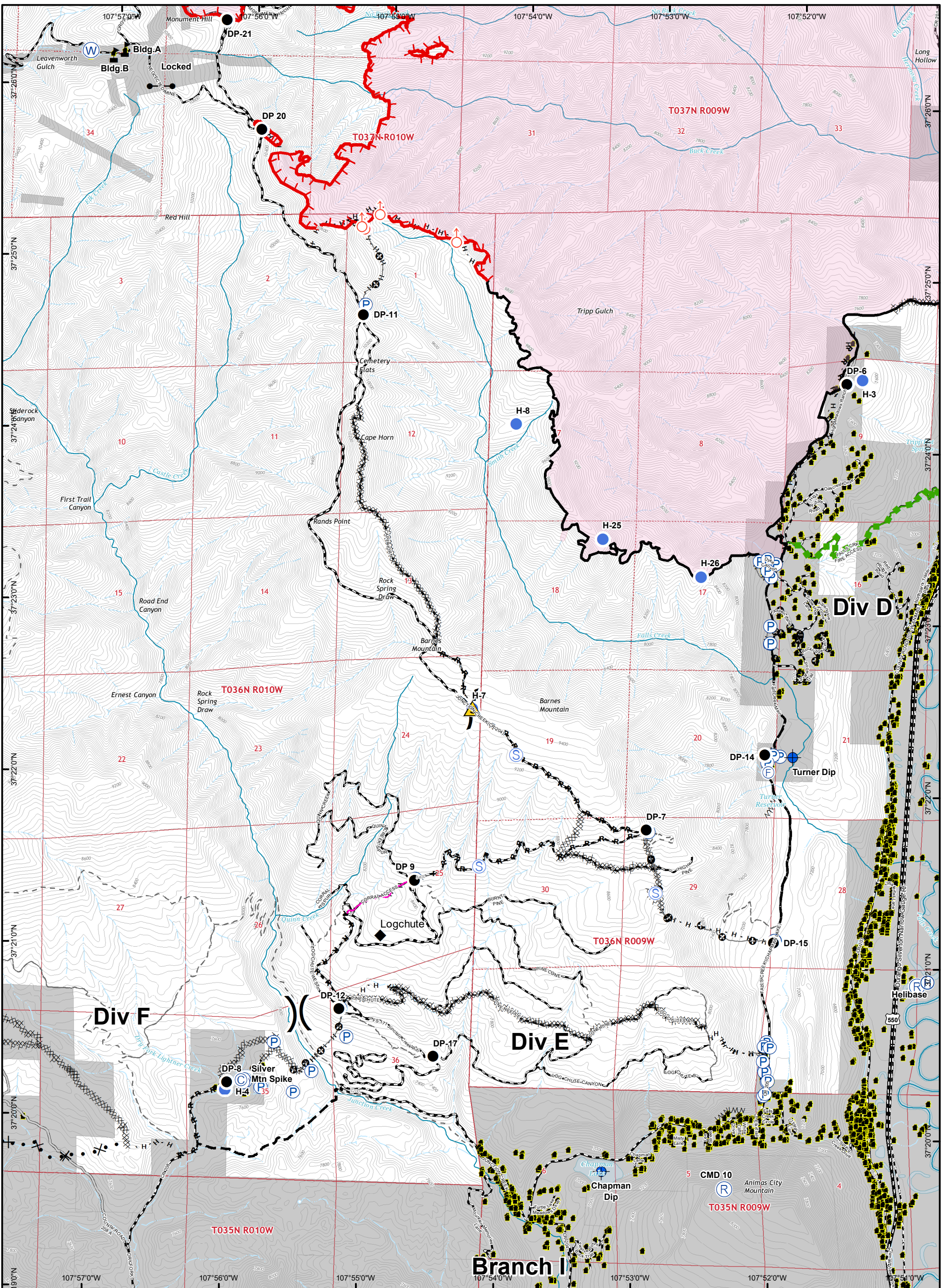
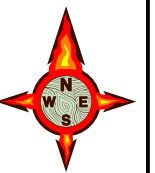
- IAP Grid Index
- Camp
- Dip Site
- Drop Point
- Gate
- Helibase
- Helispot
- Incident Command Post
- Mobile Weather Unit
- Pump
- Repeater
- Staging Area
- Water Source
- Water Tank
- Fire Station
- Uncontrolled Fire Edge
- Completed Line
- Completed Dozer Line
- H - Completed Hand Line
- R - Road as Completed Line
- Access or Improved Road
- Proposed Dozer Line
- Planned Fire Line
- Escape Route
- Wildfire Daily Fire Perimeter
- Division Break
- Branch Break

108°6'0"W 108°5'0"W 108°4'0"W 108°3'0"W 108°2'0"W 108°1'0"W 108°0'0"W 107°59'0"W 107°57'0"W 107°55'0"W 107°53'0"W 107°51'0"W 107°49'0"W 107°47'0"W 107°45'0"W











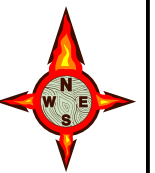
IR Perimeter Data
 416 Fire - 47,031 Acres
 IR 06/29/2018 @ 2253 hrs

416 Fire - CO-SJF-416

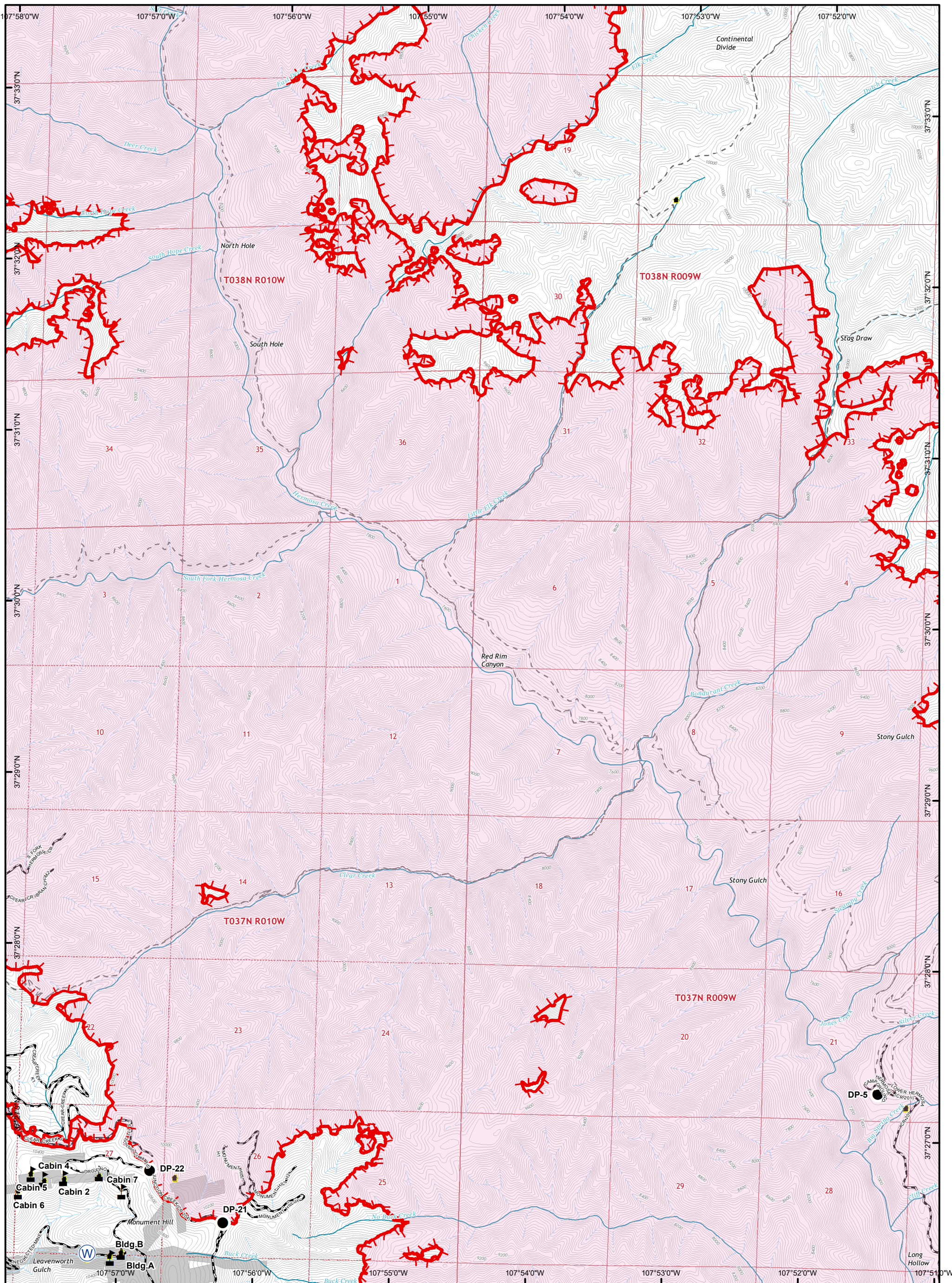
IAP - 07/01/18

Page 5

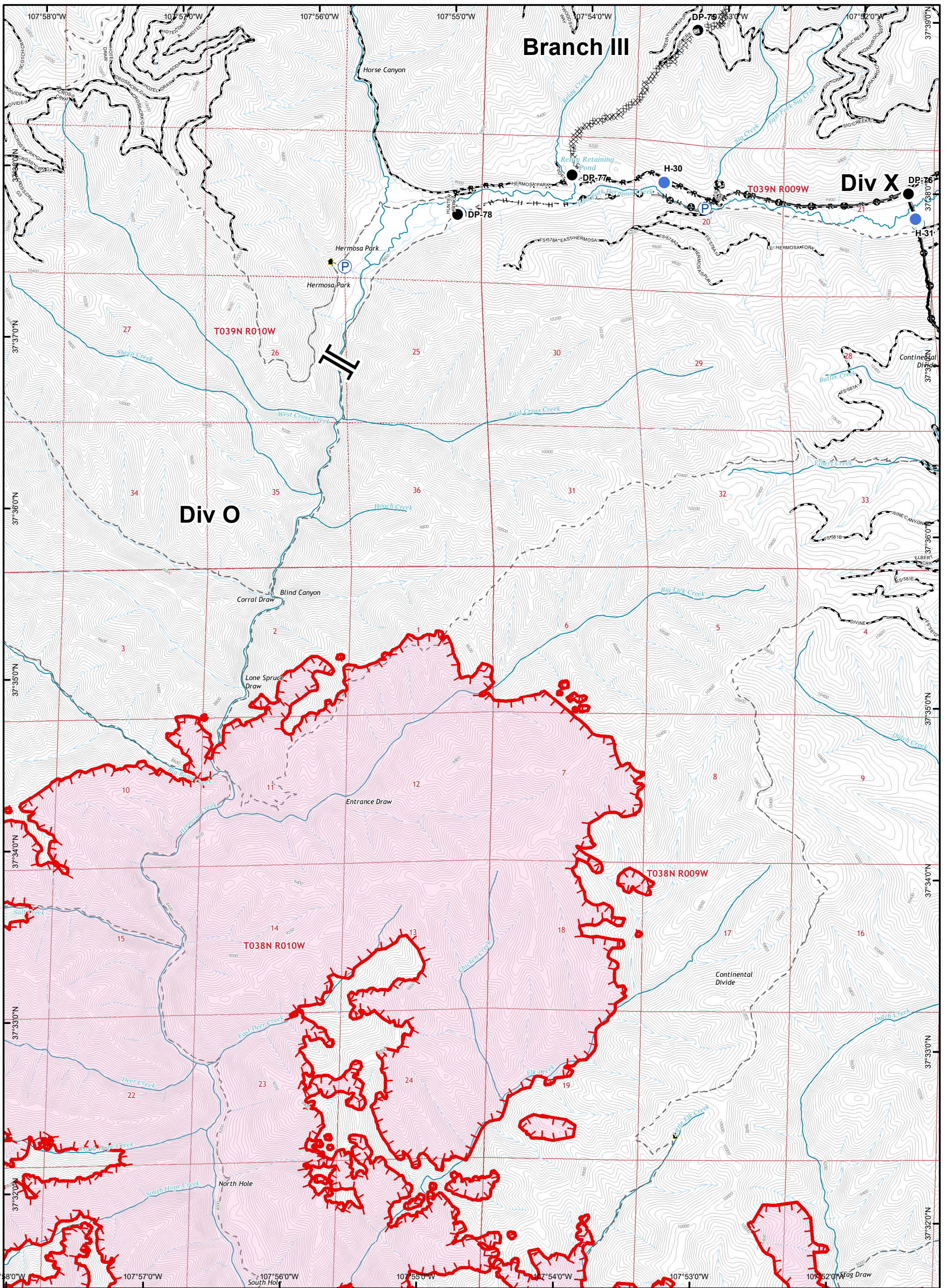
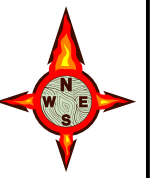
0 0.5 1 Miles



Datum: NAD 83



Drop Point
 Water Source
 Value at Risk
 Uncontrolled Fire Edge
 H - H Completed Hand Line
 Wildfire Daily Fire Perimeter



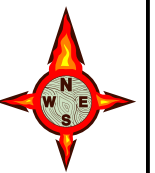
Drop Point	Helispot	Pump	Uncontrolled Fire Edge	Completed Dozer Line	R - R Road as Completed Line
Completed Line	H - H Completed Hand Line	Other	Branch Break	Wildfire Daily Fire Perimeter	



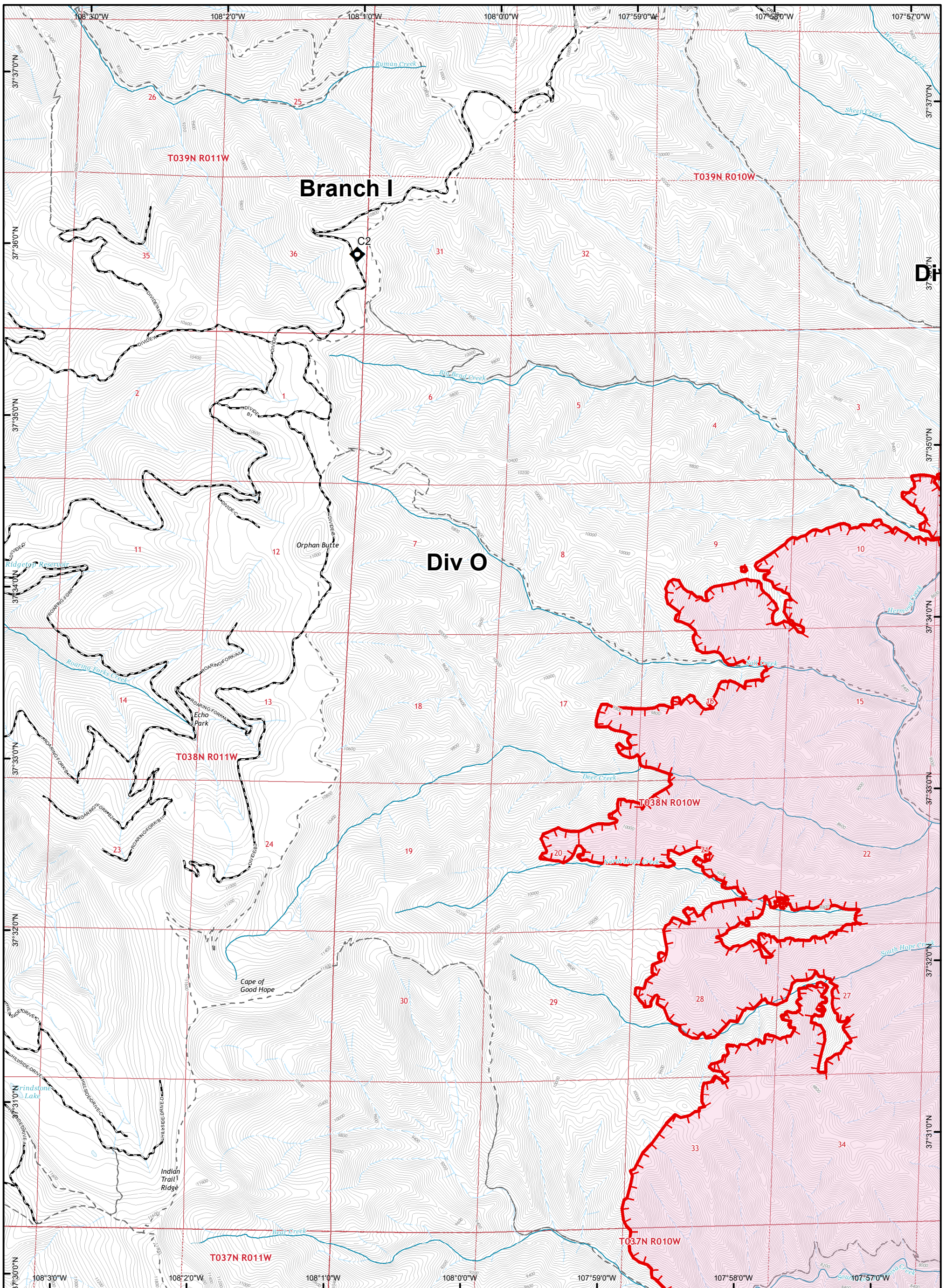
IR Perimeter Data
 416 Fire - 47,031 Acres
 IR 06/29/2018 @ 2253 hrs

416 Fire - CO-SJF-416
IAP - 07/01/18
Page 7

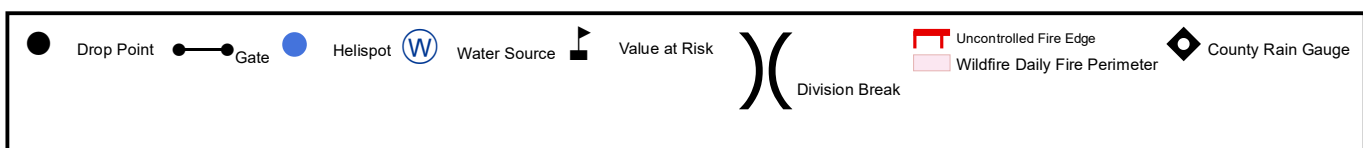
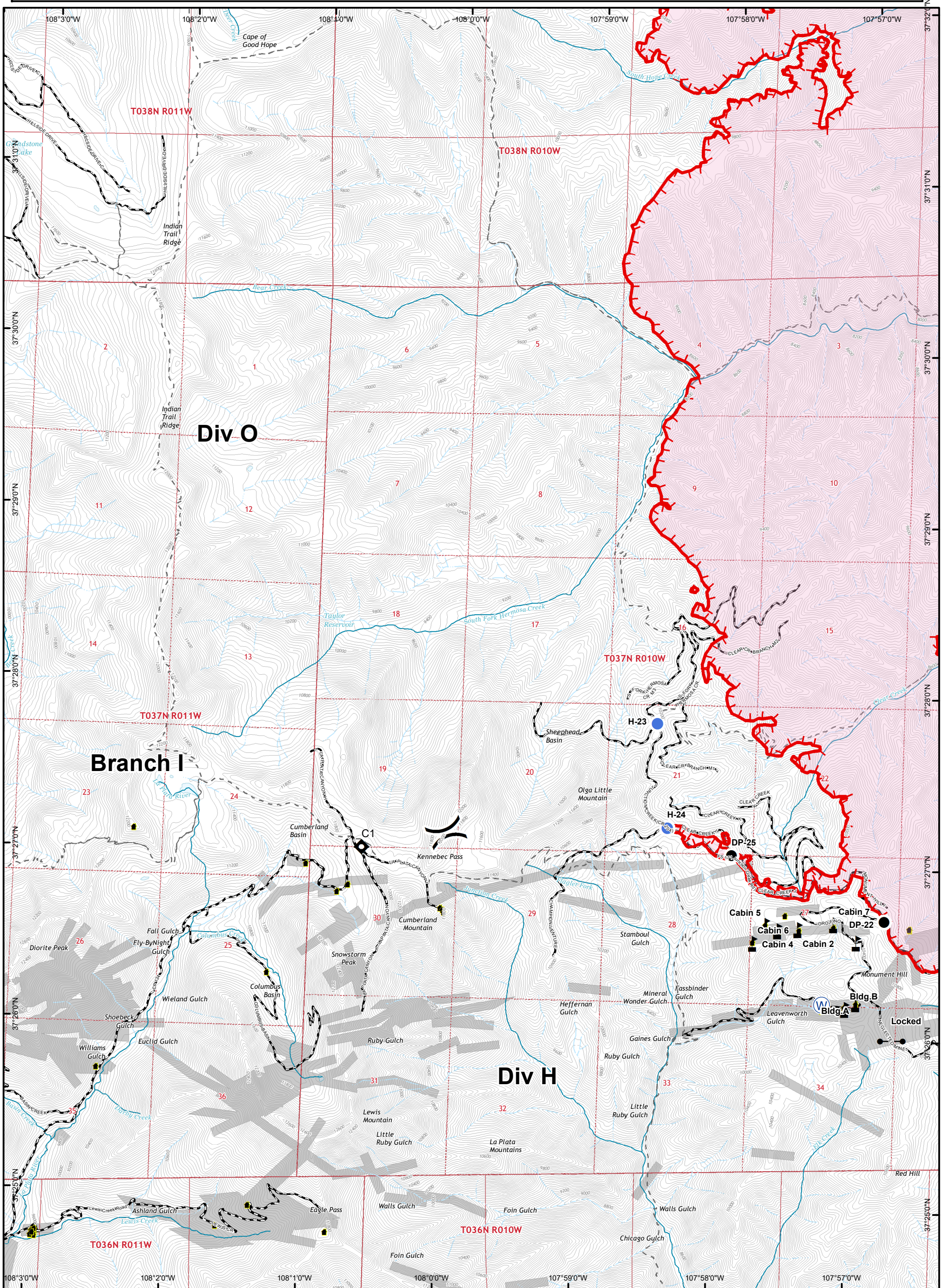
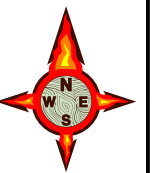
0 0.5 1 Miles

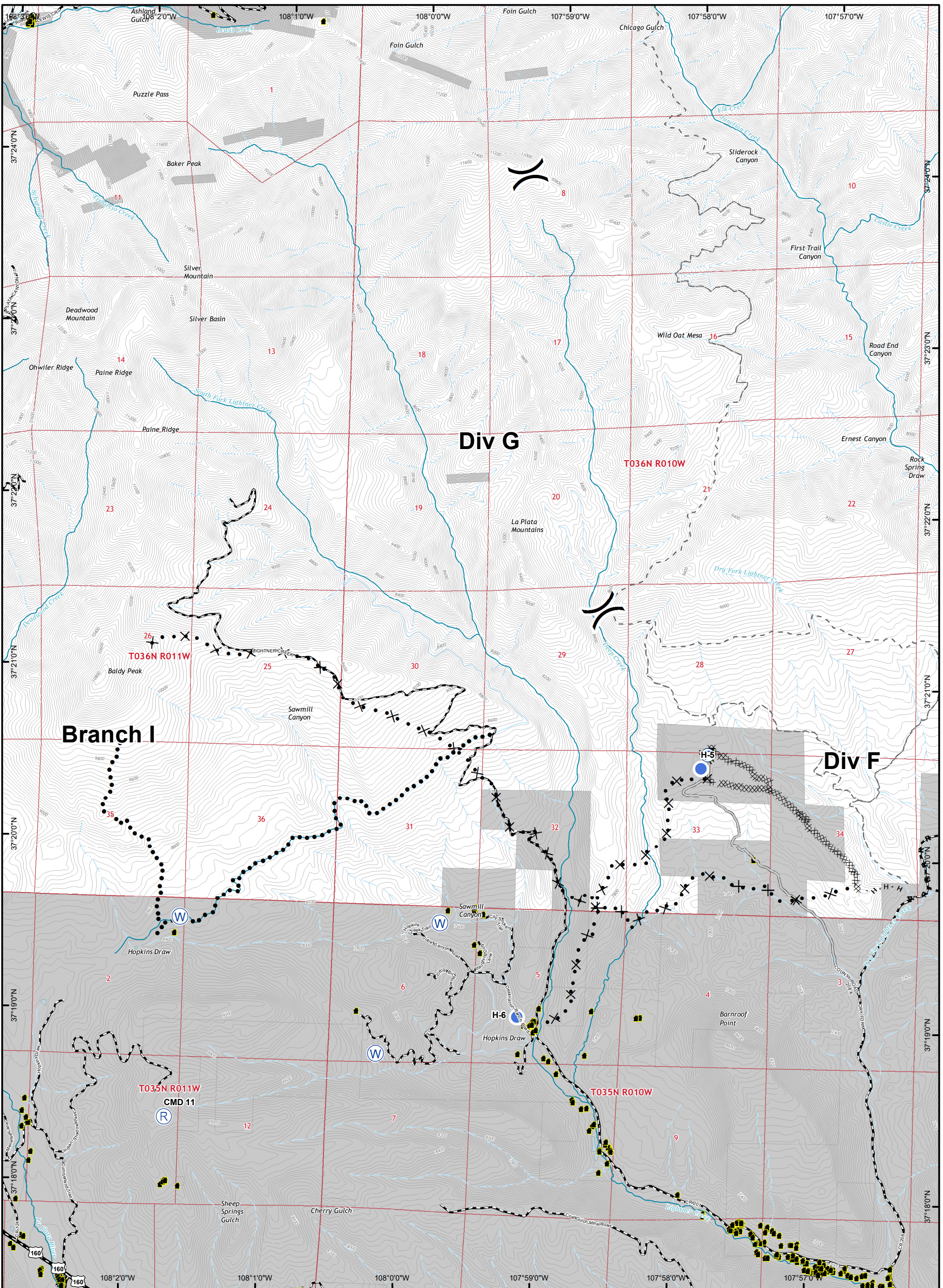
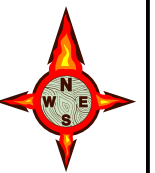


Datum: NAD 83



	Uncontrolled Fire Edge		County Rain Gauge
	Wildfire Daily Fire Perimeter		

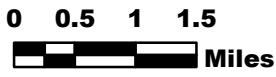




Helispot	Pump	Repeater	Water Source	Division Break	Completed Dozer Line	R - R Road as Completed Line	Planned Fire Line
					H - H Completed Hand Line	Access Road	Planned Secondary Line
					Proposed Dozer Line		Other

416 FIRE CO-SJF-416 Transportation Map 7/1/18

IR Perimeter as of
6/29/18 @ 2253 - 47,031 ac.



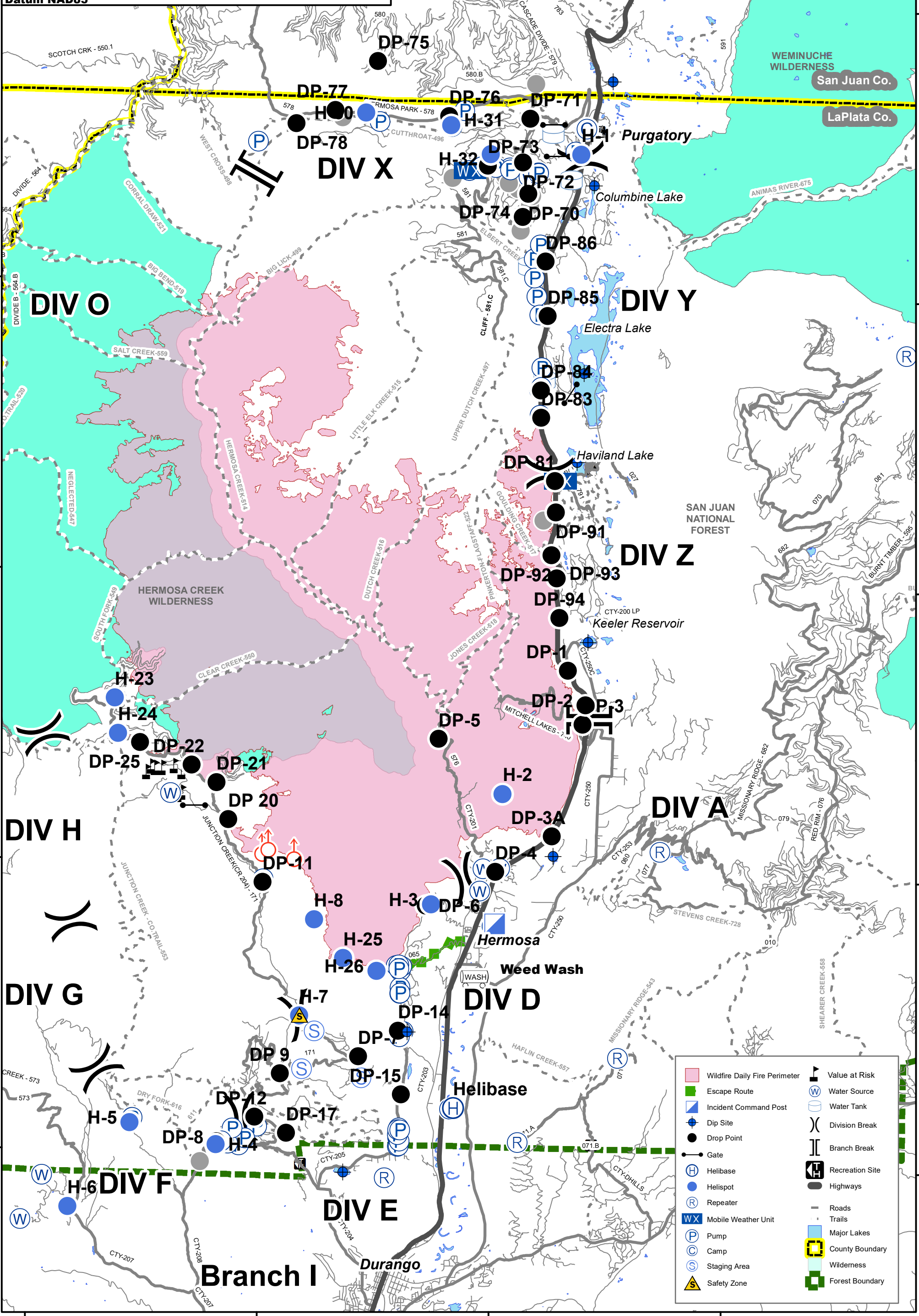
Datum NAD83



Branch III

US-550

WEMINUCHE WILDERNESS
San Juan Co.
LaPlata Co.



	Wildfire Daily Fire Perimeter		Value at Risk
	Escape Route		Water Source
	Incident Command Post		Water Tank
	Dip Site		Drop Point
	Drop Point		Gate
	Helibase		Recreation Site
	Helispot		Highways
	Repeater		Roads
	Mobile Weather Unit		Trails
	Pump		County Boundary
	Camp		Wilderness
	Staging Area		Forest Boundary
	Safety Zone		

37°40'0"N
37°35'0"N
37°30'0"N
37°25'0"N
37°20'0"N

37°40'0"N
37°35'0"N
37°30'0"N
37°25'0"N
37°20'0"N

108°0'0"W 107°55'0"W 107°50'0"W 107°45'0"W