

416 FIRE CO-SJF-416

Div A, D Transport Map Book

07/01/18



Datum NAD83

1 Miles



37°27'N
37°26'N
37°25'N
37°24'N
37°23'N
37°22'N
37°21'N

37°27'N
37°26'N
37°25'N
37°24'N
37°23'N
37°22'N
37°21'N

HERMOSA CREEK WILDERNESS

Hermosa Creek Special Mgt Area

Div A

BRANCH I

Elkhorn

Honeyville

Hermosa

Falls Creek

789

Helibase

Hallin Canyon

M I S S I O N A R Y

Baldy Mount

Legend

-)(Division Break
-] [Branch Break
- Drop Point
- Helispot
- ⊕ Helibase
- ▣ Incident Command Post
- Completed Line
- ⊗ Completed Dozer Line
- H - Completed Hand Line
- R - Road as Completed Line
- ▬ Uncontrolled Fire Edge
- ⊿ Fire Break Planned
- ▬ Planned Fire Line
- ▬ Escape Route
- ▬ Access or Improved Road
- ▬ Wildfire Daily Fire Perimeter
- ▬ Railroad
- Roads**
- ▬ US HWY
- ▬ CTY
- ▬ FS
- ▬ Improved
- ▬ Unimproved/Decom
- ▬ County Boundary

06/29/2018 @ 2253

416 FIRE CO-SJF-416

Div E, H Transport Map Book
07/01/18



- () Division Break
- Drop Point
- Helispot
- ⊕ Helibase
- ▲ Safety Zone
- Completed Line
- ⊗ Completed Dozer Line
- H - Completed Hand Line
- R - Road as Completed Line
- Uncontrolled Fire Edge
- ⊗ Proposed Dozer Line
- ⊗ Fire Break Planned
- Planned Fire Line
- Escape Route
- Unknown
- Access or Improved Road
- Wildfire Daily Fire Perimeter
- Railroad
- Roads**
- US HWY
- CTY
- FS
- Improved
- Unimproved/Decom
- County Boundary

06/29/2018 @ 2253

BRANCH I

Hermosa Creek
Special Mgt Area

Mountain
Meadows
Ranch

Falls
Creek

Div D

Div E

Div F

Helibase

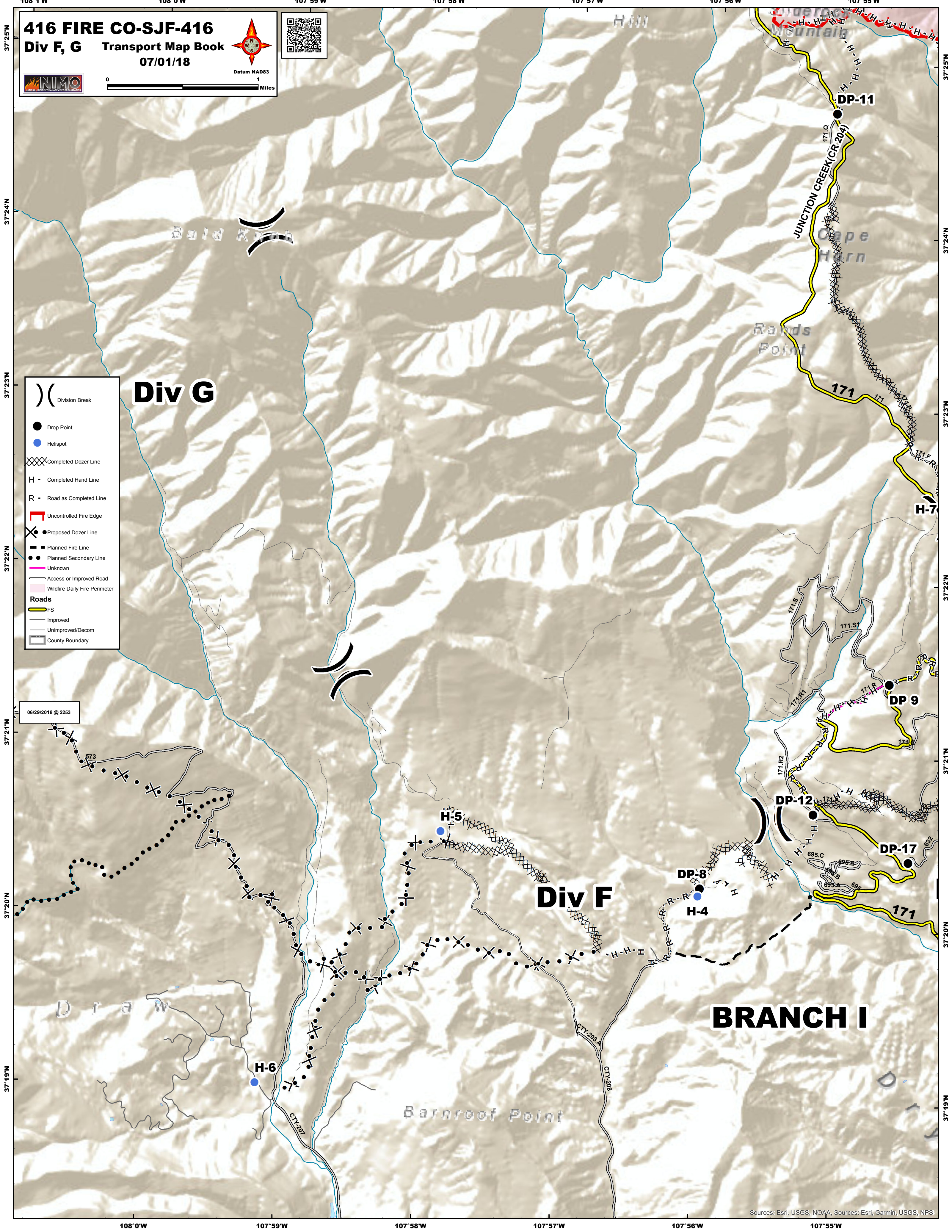


-)(** Division Break
- Drop Point
 - Helispot
 - XXXX Completed Dozer Line
 - H - Completed Hand Line
 - R - Road as Completed Line
 - Uncontrolled Fire Edge
 - Proposed Dozer Line
 - Planned Fire Line
 - Planned Secondary Line
 - Unknown
 - Access or Improved Road
 - Wildfire Daily Fire Perimeter
- Roads**
- FS
 - Improved
 - Unimproved/Decom
 - County Boundary

Div G

Div F

BRANCH I



416 FIRE CO-SJF-416

Div H, O Transport Map Book
07/01/18



BRANCH I

Div O

Div H

La Plata Historic Mining Area

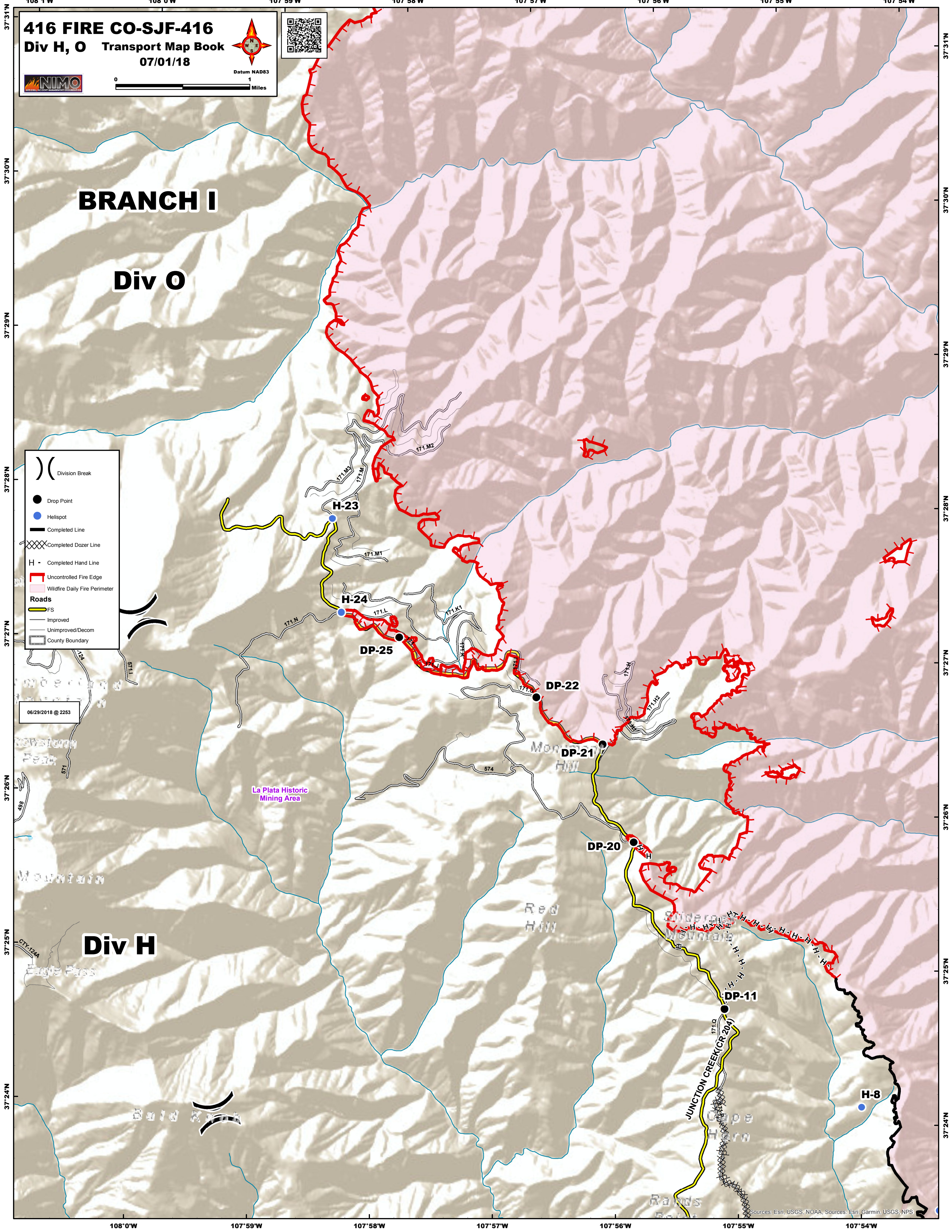
Montipal Hill

Slide Rock Mountain

JUNCTION CREEK (CR 204)

-)) Division Break
- Drop Point
- Helispot
- Completed Line
- ⊗ Completed Dozer Line
- H - Completed Hand Line
- ▬ Uncontrolled Fire Edge
- ▭ Wildfire Daily Fire Perimeter
- Roads**
- FS
- Improved
- Unimproved/Decom
- ▭ County Boundary

06/29/2018 @ 2253



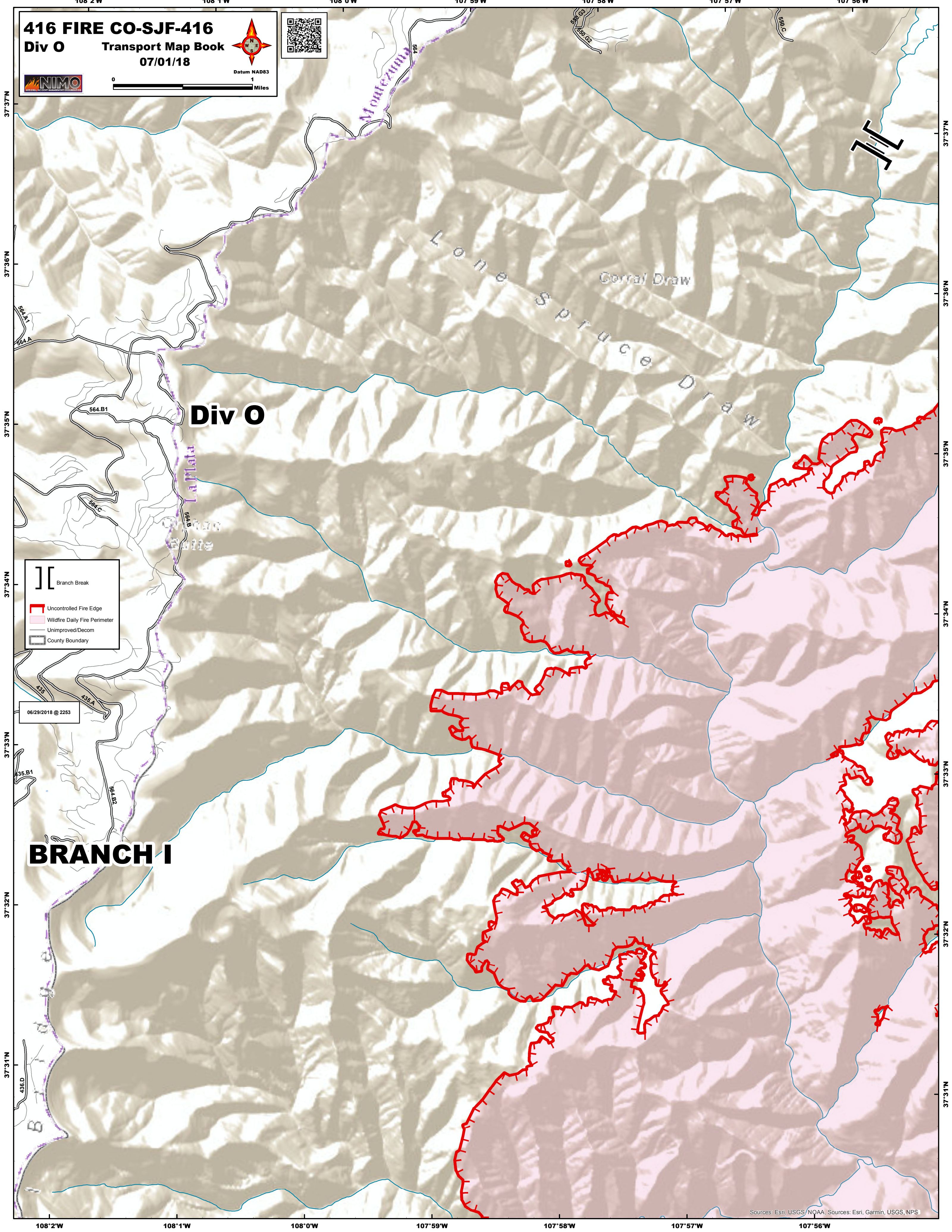
416 FIRE CO-SJF-416

Div O Transport Map Book

07/01/18



Datum NAD83



Div O

BRANCH I

- Branch Break
- Uncontrolled Fire Edge
- Wildfire Daily Fire Perimeter
- Unimproved/Decom
- County Boundary

06/29/2018 @ 2253

416 FIRE CO-SJF-416
Div X Transport Map Book
07/01/18



0 1 Miles
Datum NAD83



BRANCH III

Div X

Div Y

Div

- () Division Break
- [] Branch Break
- Drop Point
- Helispot
- Completed Line
- ⊗ Completed Dozer Line
- H - Completed Hand Line
- R - Road as Completed Line
- ▬ Uncontrolled Fire Edge
- Access or Improved Road
- ▭ Wildfire Daily Fire Perimeter
- Roads**
- US HWY
- FS
- Improved
- Unimproved/Decom
- ▭ County Boundary

06/29/2018 @ 2253

Hermosa Creek
Special Mgt Area

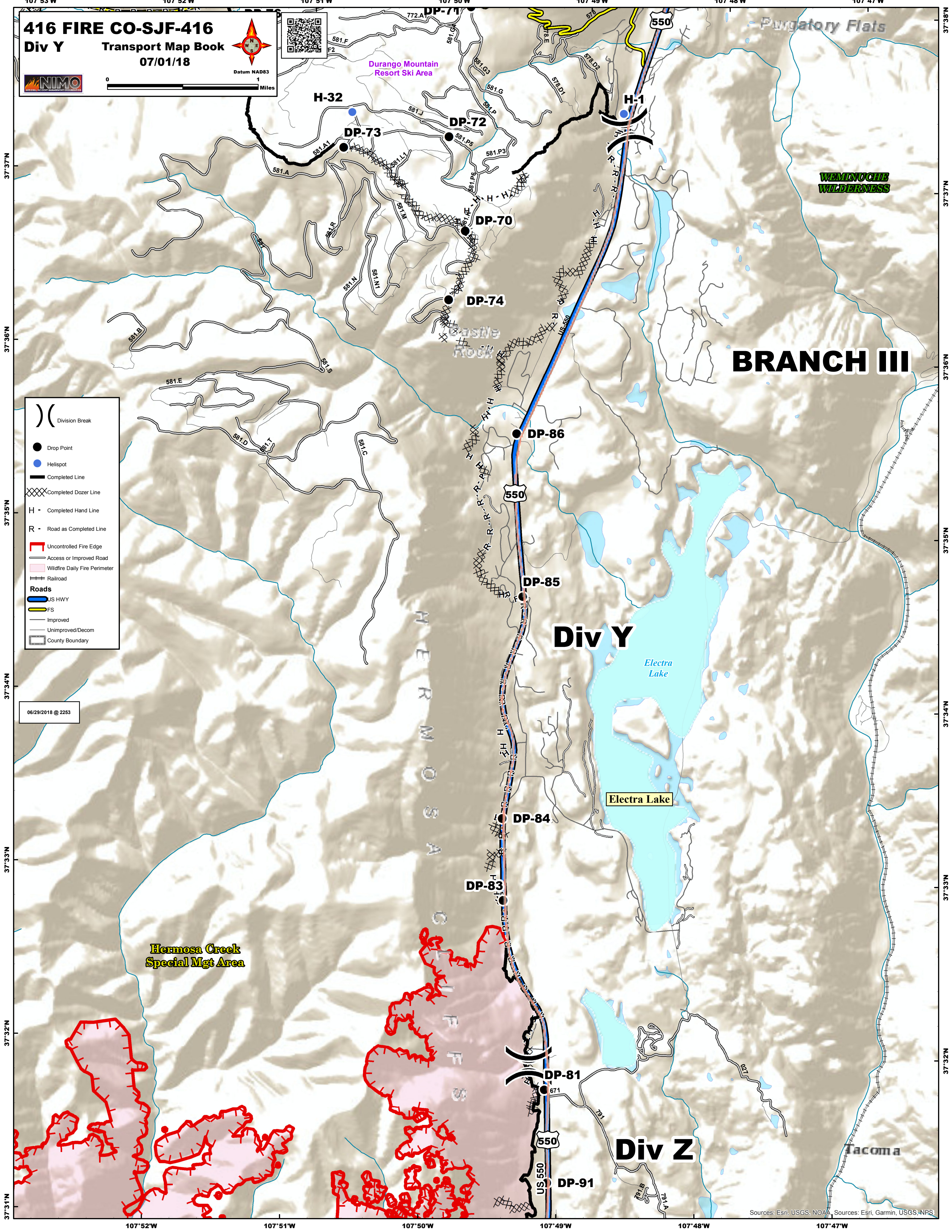
Electra Lake

Electra Lake

416 FIRE CO-SJF-416
Div Y Transport Map Book
07/01/18



Datum NAD83
0 1 Miles



BRANCH III

Div Y

Div Z

**Hermosa Creek
Special Mgt Area**

Electra Lake

416 FIRE CO-SJF-416

Div Z Transport Map Book

07/01/18



Hermosa Creek Special Mgt Area

Legend

-) (Division Break
-] [Branch Break
- Drop Point
- Helispot
- Completed Line
- ⊗ Completed Dozer Line
- H - Completed Hand Line
- R - Road as Completed Line
- ▬ Uncontrolled Fire Edge
- Access or Improved Road
- ▭ Wildfire Daily Fire Perimeter
- ⊕ Railroad
- Roads**
- US HWY
- FS
- Improved
- Unimproved/Decom
- ▭ County Boundary

06/29/2018 @ 2253

DP-83

DP-81

DP-91

DP-92

DP-93

DP-94

DP-1

DP-2

DP-3

DP-5

H-2

550

550

550

Div Z

BRANCH III

Div A

BRANCH I

Tacoma

Glacier Club

Tamarron

Rockwood

Keeler Reservoir

Celadon

Whitehead

Elkhorn

Long Hollow

MOSA CREEK WILDERNESS