

108°1'W 108°0'W 107°59'W 107°58'W 107°57'W 107°56'W 107°55'W

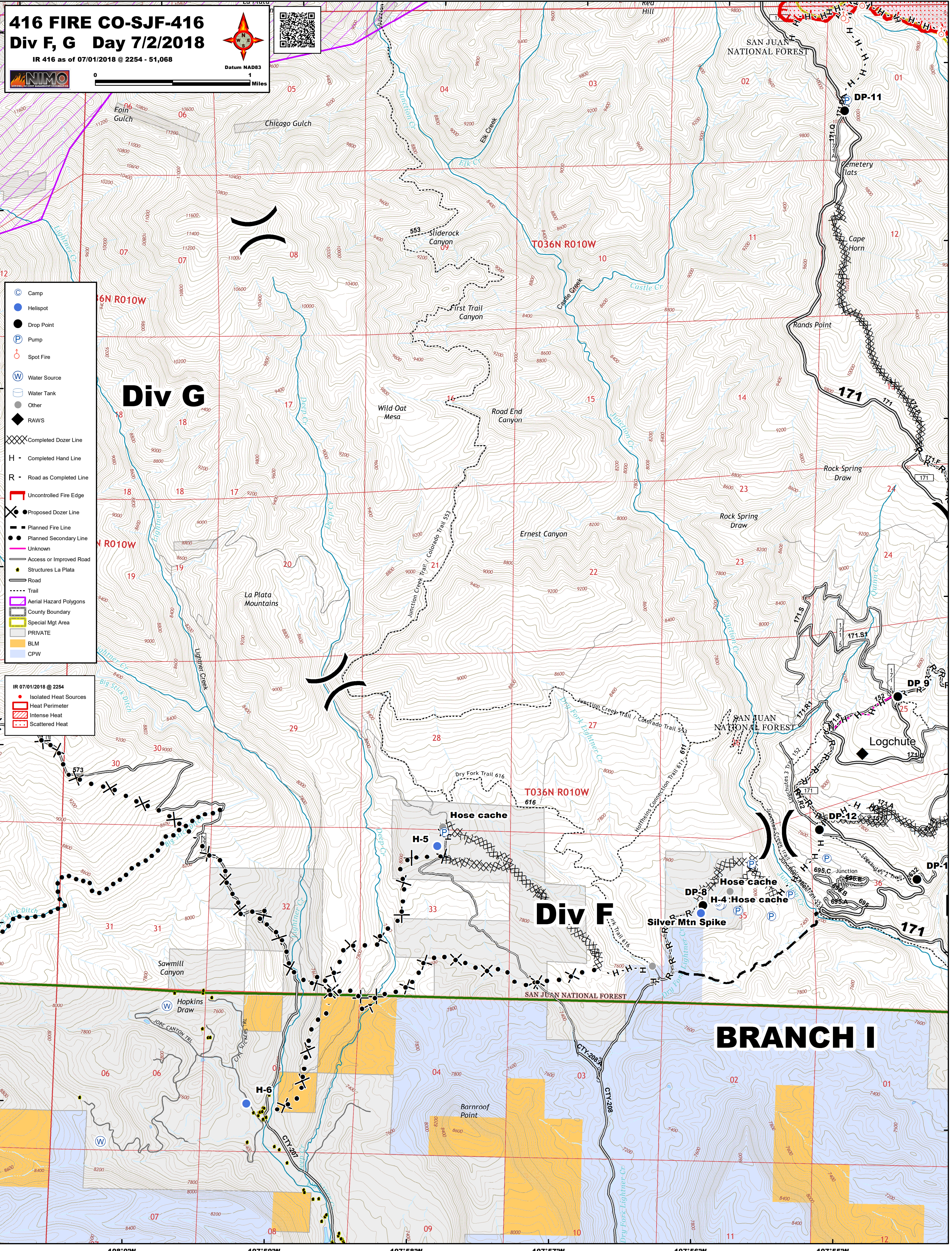
416 FIRE CO-SJF-416 Div F, G Day 7/2/2018

IR 416 as of 07/01/2018 @ 2254 - 51,068



- Camp
- Helispot
- Drop Point
- Pump
- Spot Fire
- Water Source
- Water Tank
- Other
- RAWS
- Completed Dozer Line
- Completed Hand Line
- Road as Completed Line
- Uncontrolled Fire Edge
- Proposed Dozer Line
- Planned Fire Line
- Planned Secondary Line
- Unknown
- Access or Improved Road
- Structures La Plata
- Road
- Trail
- Aerial Hazard Polygons
- County Boundary
- Special Mgt Area
- PRIVATE
- BLM
- CPW

- IR 07/01/2018 @ 2254
- Isolated Heat Sources
 - Heat Perimeter
 - Intense Heat
 - Scattered Heat



Div G

Div F

BRANCH I

108°0'W 107°59'W 107°58'W 107°57'W 107°56'W 107°55'W