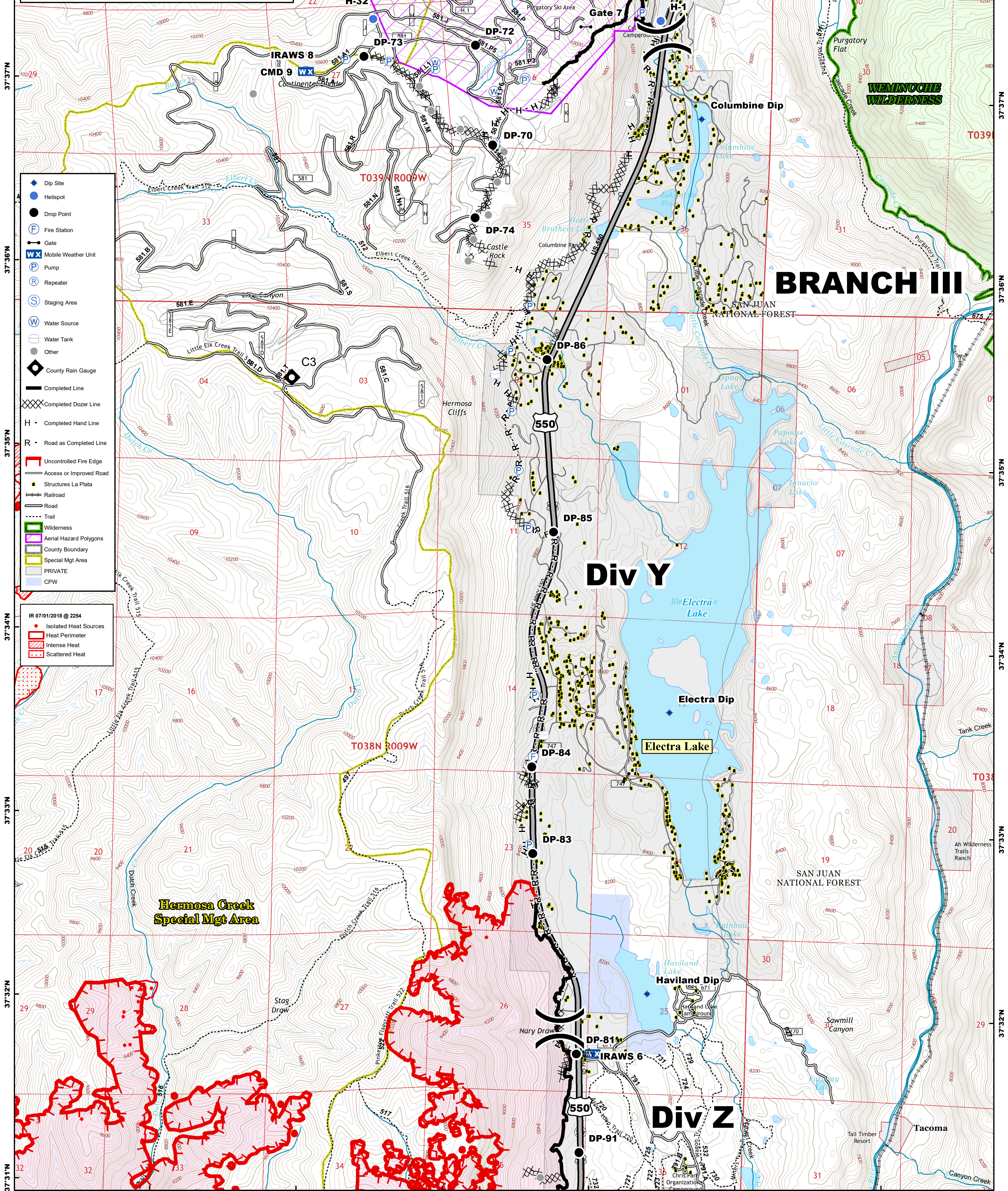


107°53'W 107°52'W 107°51'W 107°50'W 107°49'W 107°48'W 107°47'W

416 FIRE CO-SJF-416
Div Y Day 7/2/2018
 IR 416 as of 07/01/2018 @ 2254 - 51,068



Datum NAD83
 1 Miles



- Dip Site
 - Helispot
 - Drop Point
 - Fire Station
 - Gate
 - Mobile Weather Unit
 - Pump
 - Repeater
 - Staging Area
 - Water Source
 - Water Tank
 - Other
 - County Rain Gauge
 - Completed Line
 - Completed Dozer Line
 - Completed Hand Line
 - Road as Completed Line
 - Uncontrolled Fire Edge
 - Access or Improved Road
 - Structures La Plata
 - Railroad
 - Road
 - Trail
 - Wilderness
 - Aerial Hazard Polygons
 - County Boundary
 - Special Mgt Area
 - PRIVATE
 - CPW
-
- IR 07/01/2018 @ 2254
 - Isolated Heat Sources
 - Heat Perimeter
 - Intense Heat
 - Scattered Heat

BRANCH III

Div Y

Div Z

Hermosa Creek Special Mgt Area

WEMINUCHE WILDERNESS

Columbine Dip

Electra Dip

Electra Lake

Haviland Dip

IRAWS 6

Tacoma

37°37'N
37°36'N
37°35'N
37°34'N
37°33'N
37°32'N
37°31'N

37°38'N
37°37'N
37°36'N
37°35'N
37°34'N
37°33'N
37°32'N
37°31'N

107°52'W 107°51'W 107°50'W 107°49'W 107°48'W 107°47'W