



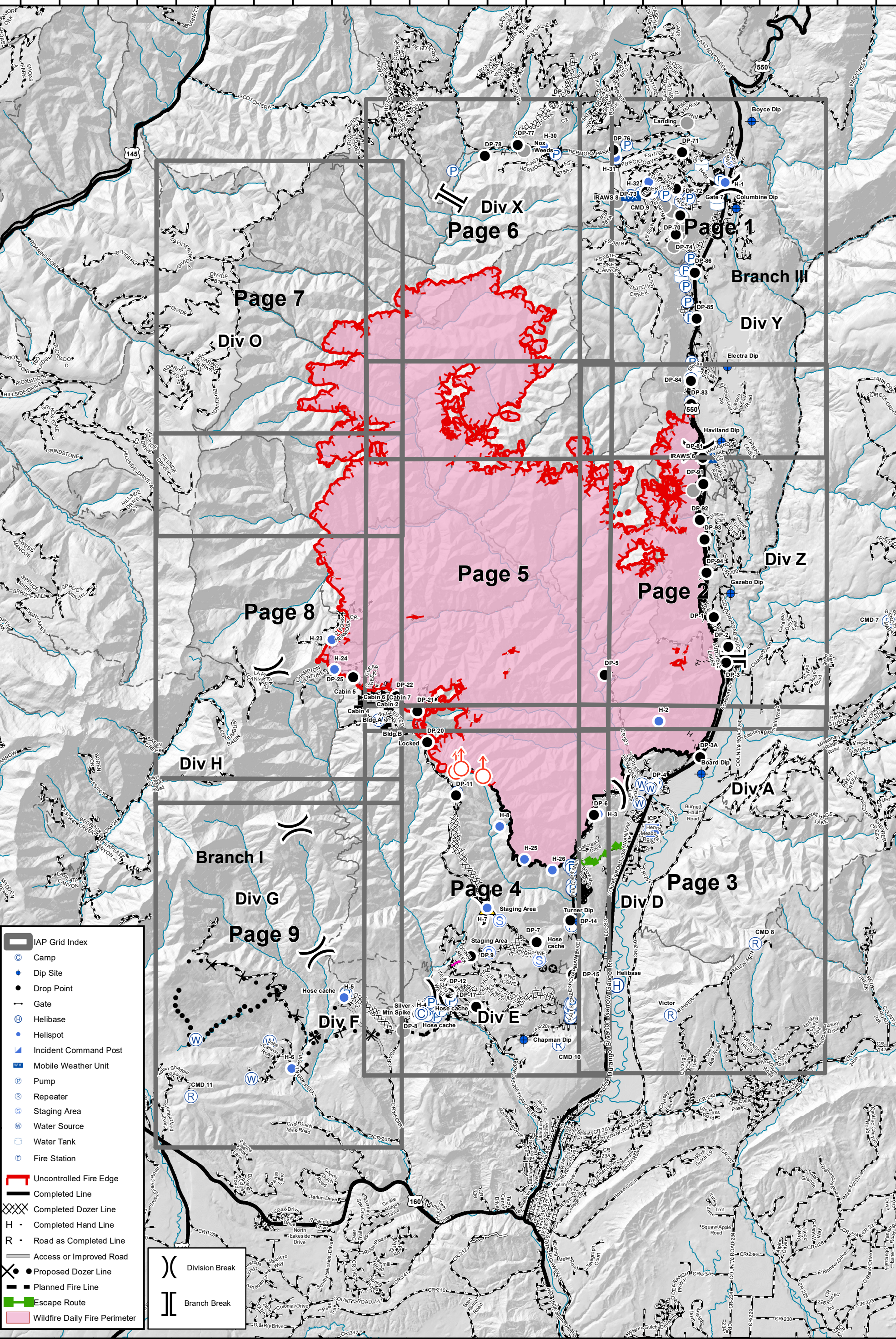
416 Fire - CO-SJF-416 IAP Grid Index - 7/2/18

0 0.5 1 2 Miles



Datum: NAD 83

108°7'0"W 108°6'0"W 108°5'0"W 108°4'0"W 108°3'0"W 108°2'0"W 108°1'0"W 108°0'0"W 107°59'0"W 107°57'0"W 107°55'0"W 107°53'0"W 107°51'0"W 107°49'0"W 107°47'0"W 107°45'0"W



- IAP Grid Index
- Camp
- Dip Site
- Drop Point
- Gate
- Helibase
- Helispot
- Incident Command Post
- Mobile Weather Unit
- Pump
- Repeater
- Staging Area
- Water Source
- Water Tank
- Fire Station
- Uncontrolled Fire Edge
- Completed Line
- Completed Dozer Line
- H - Completed Hand Line
- R - Road as Completed Line
- Access or Improved Road
- Proposed Dozer Line
- Planned Fire Line
- Escape Route
- Wildfire Daily Fire Perimeter
- Division Break
- Branch Break

Division Break
Branch Break

Div X
Page 6

Page 7
Div O

Page 8
Div H

Page 9
Branch I
Div G

Div F

Page 4
Div E

Page 5

Page 2
Div Z

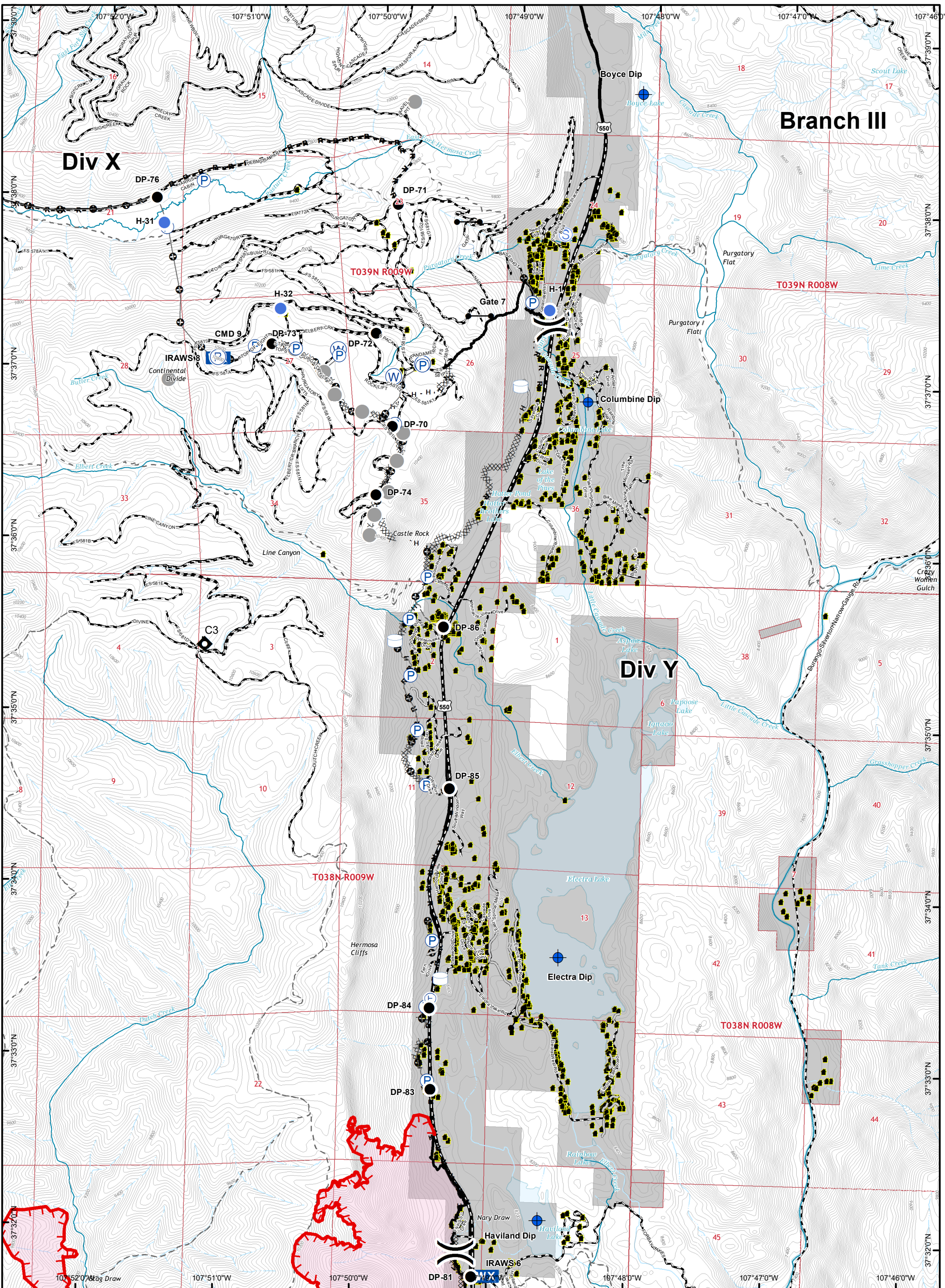
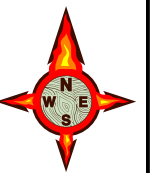
Page 3
Div D

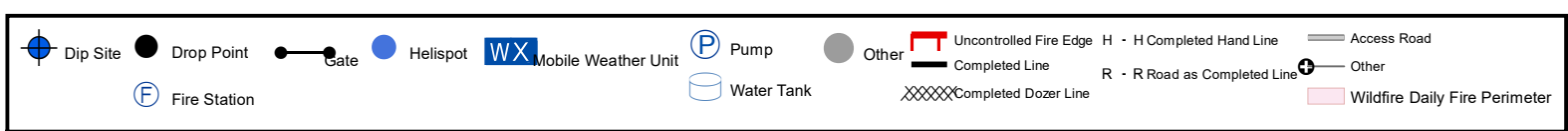
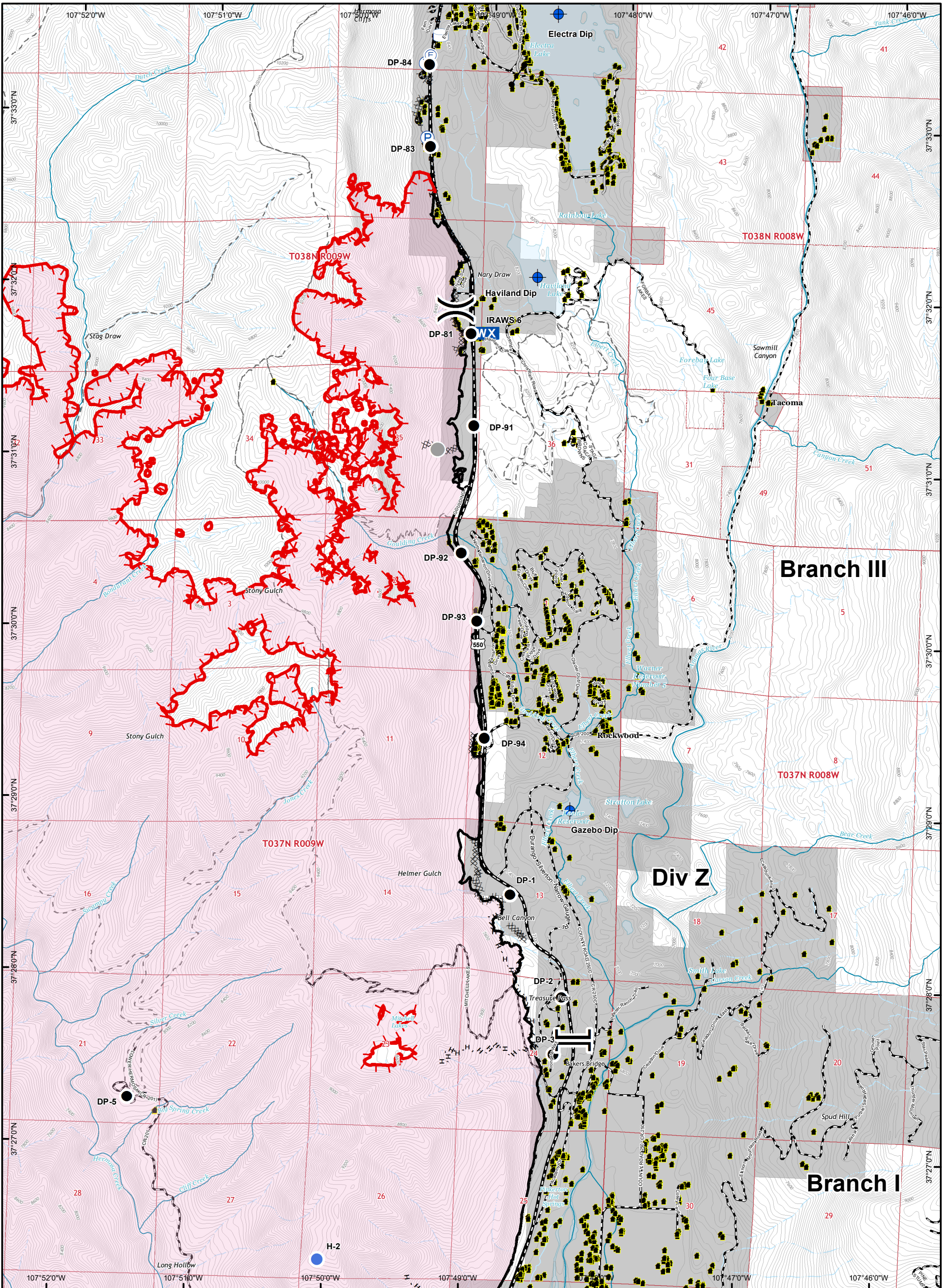
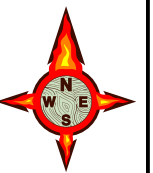
Div A

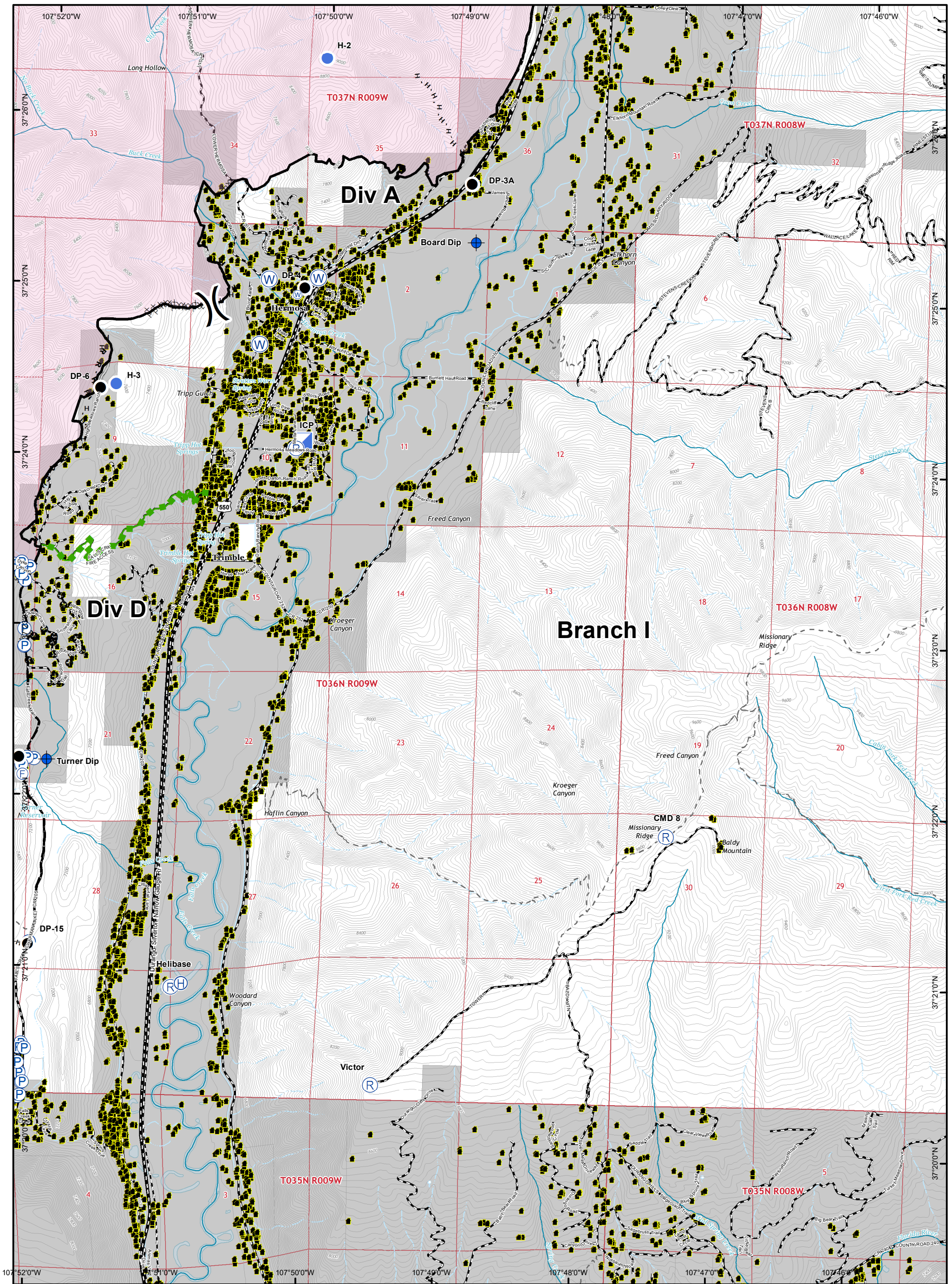
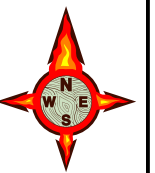
Div Y

Page 1
Branch III

108°6'0"W 108°5'0"W 108°4'0"W 108°3'0"W 108°2'0"W 108°1'0"W 108°0'0"W 107°59'0"W 107°57'0"W 107°55'0"W 107°53'0"W 107°51'0"W 107°49'0"W 107°47'0"W 107°45'0"W









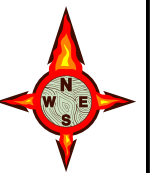
IR Perimeter Data
 416 Fire - 49,301 Acres
 IR 6/30/2018 @ 2354 hrs

416 Fire - CO-SJF-416

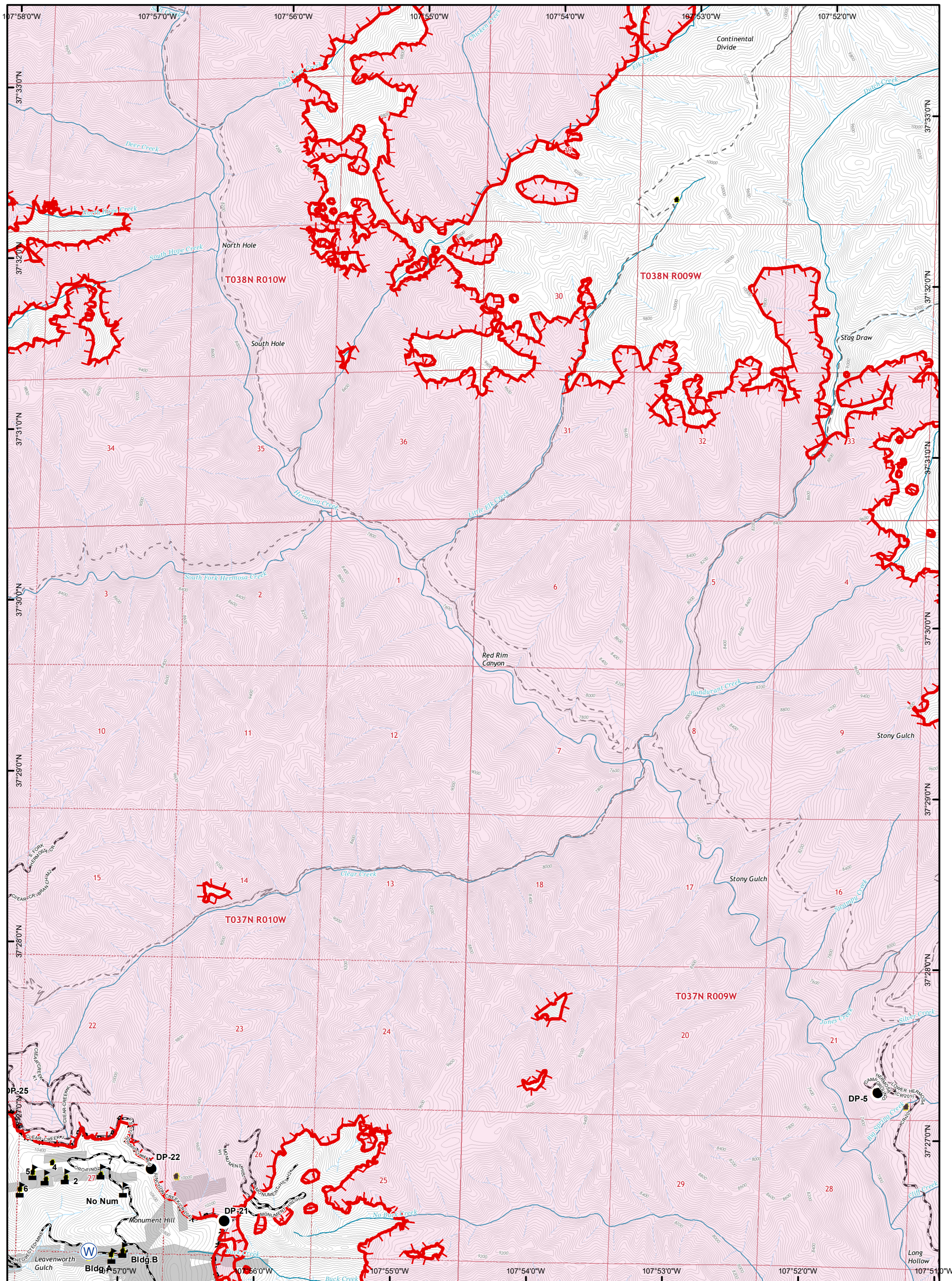
IAP - 07/02/18

Page 5

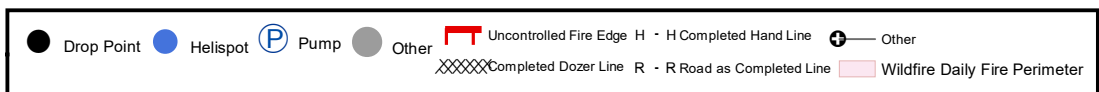
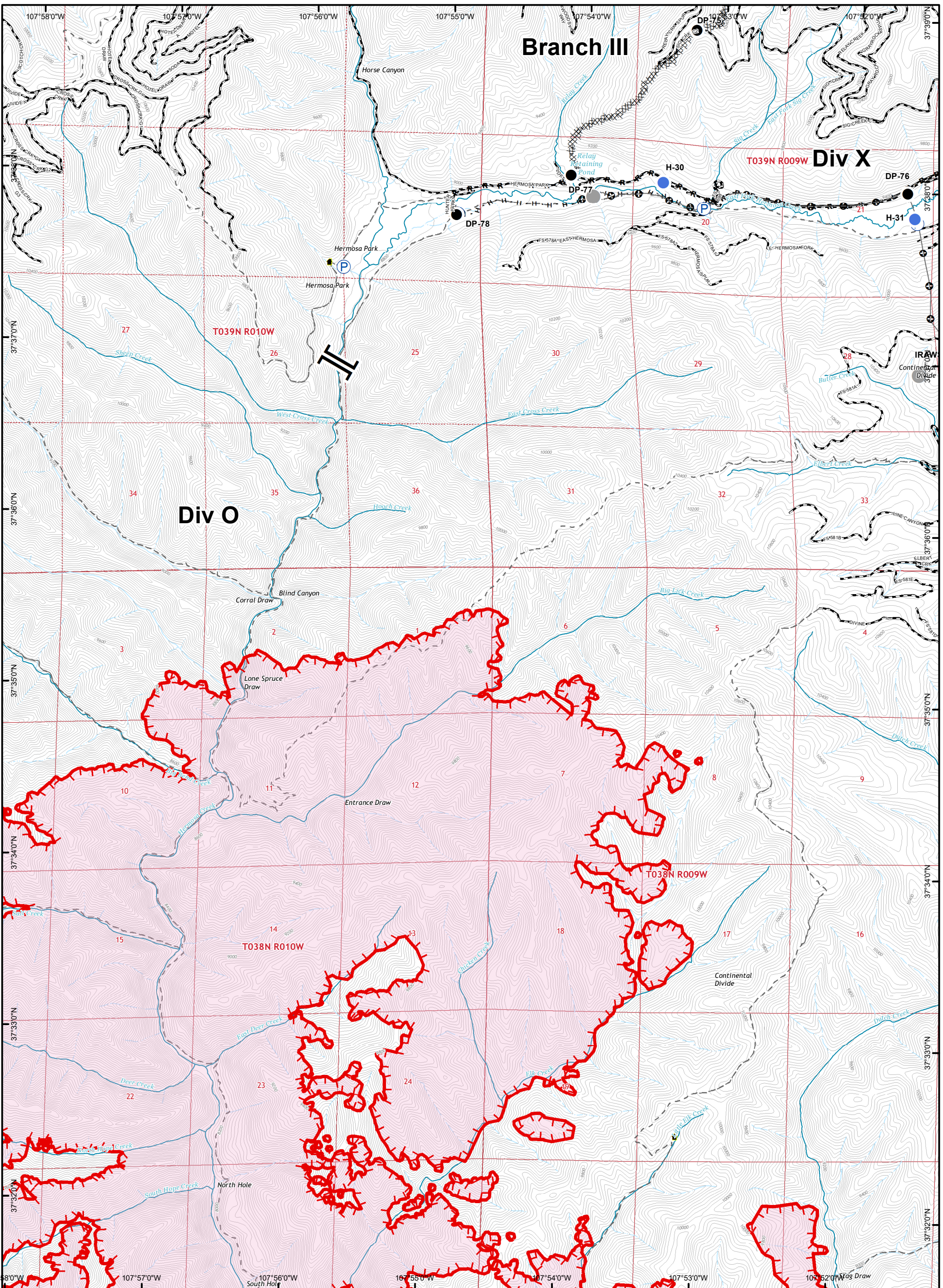
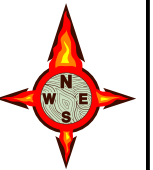
0 0.5 1 Miles



Datum: NAD 83



Drop Point
 Water Source
 Value at Risk
 Uncontrolled Fire Edge
 H - H Completed Hand Line
 R - R Road as Completed Line
 Wildfire Daily Fire Perimeter

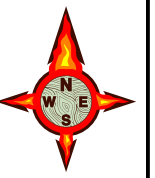




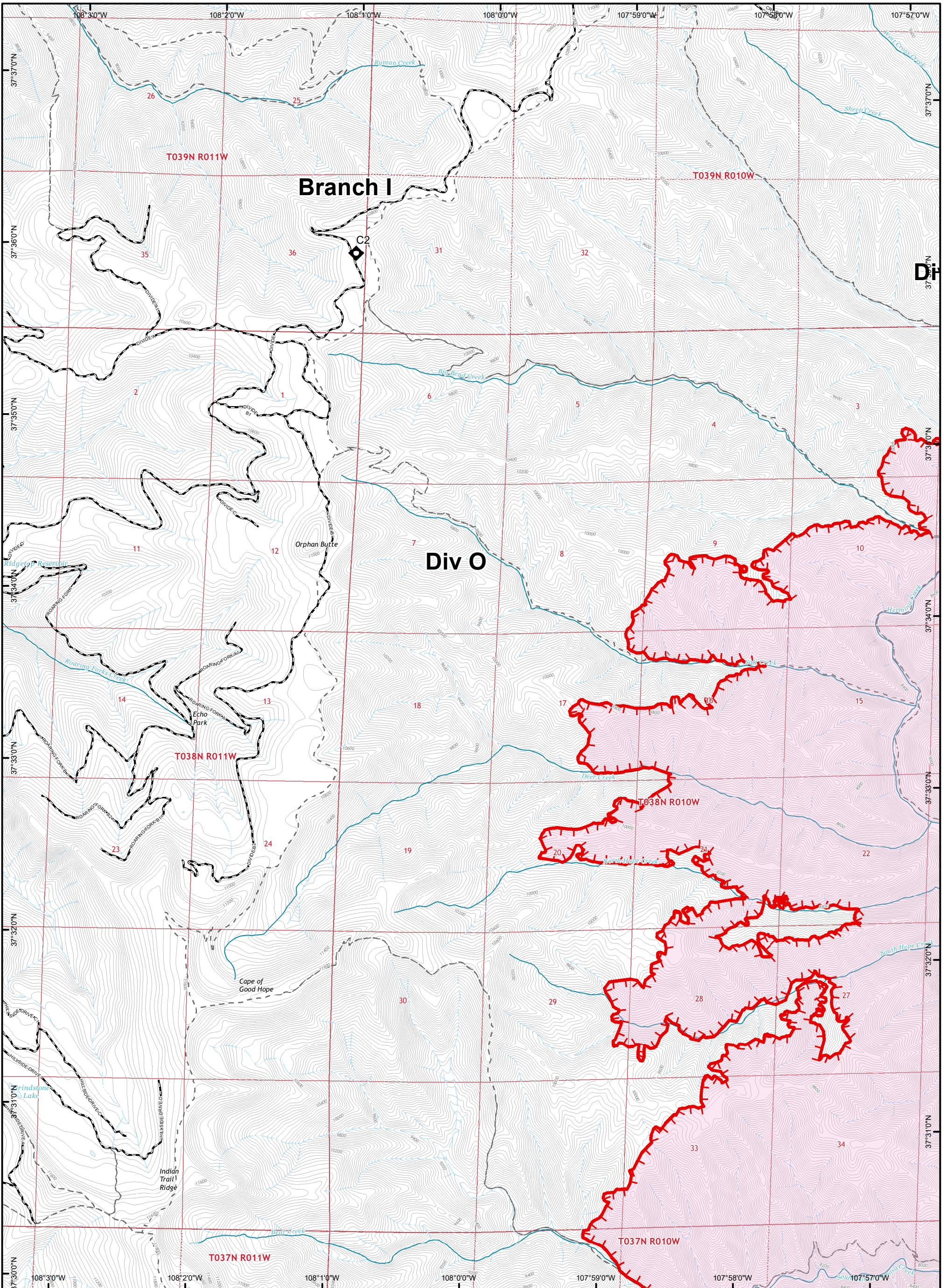
IR Perimeter Data
 416 Fire - 49,301 Acres
 IR 6/30/2018 @ 2354 hrs

416 Fire - CO-SJF-416
IAP - 07/02/18
Page 7

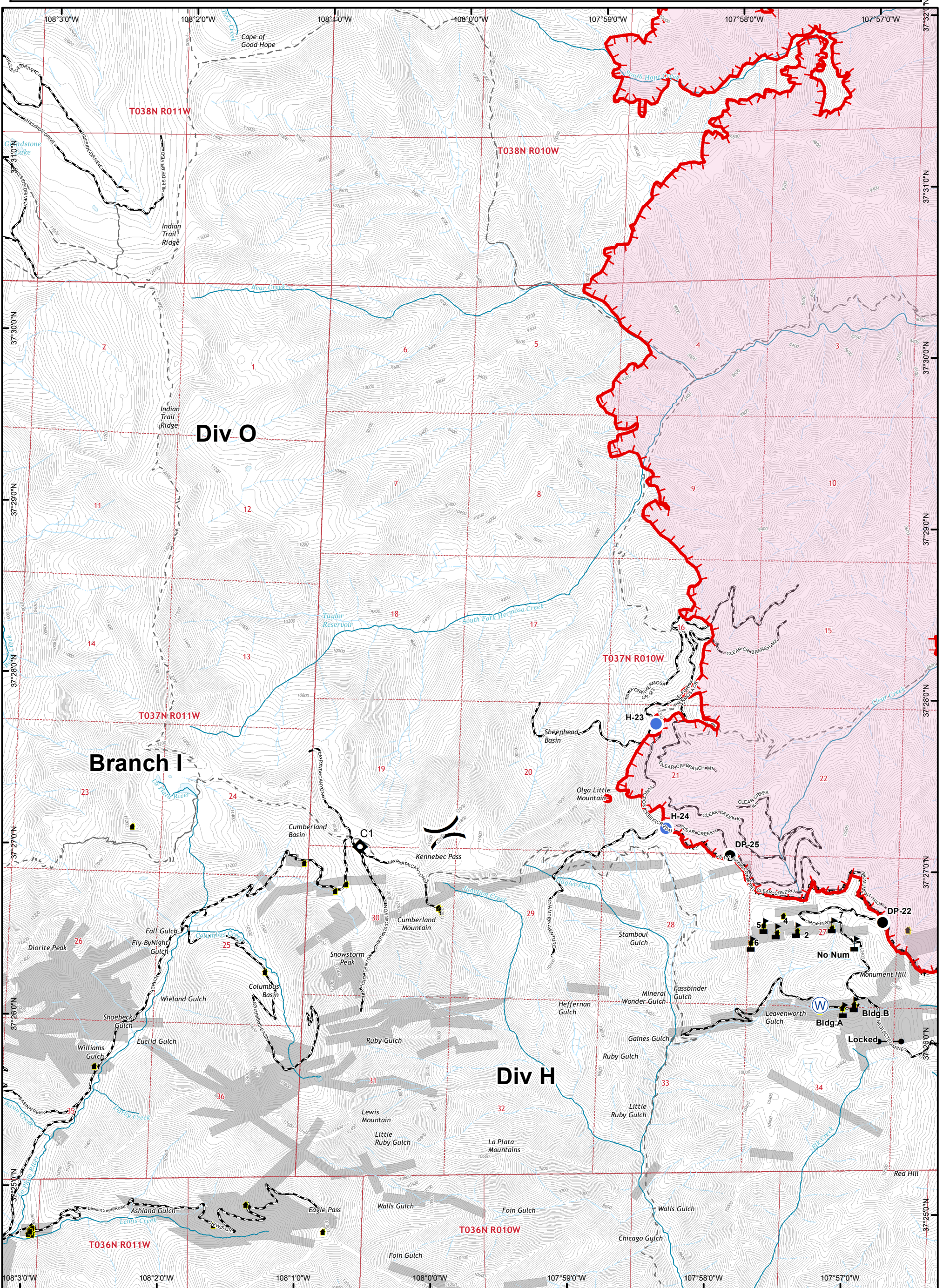
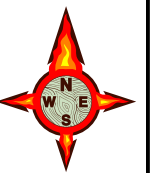
0 0.5 1 Miles

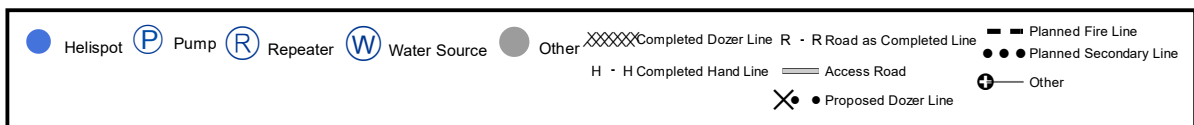
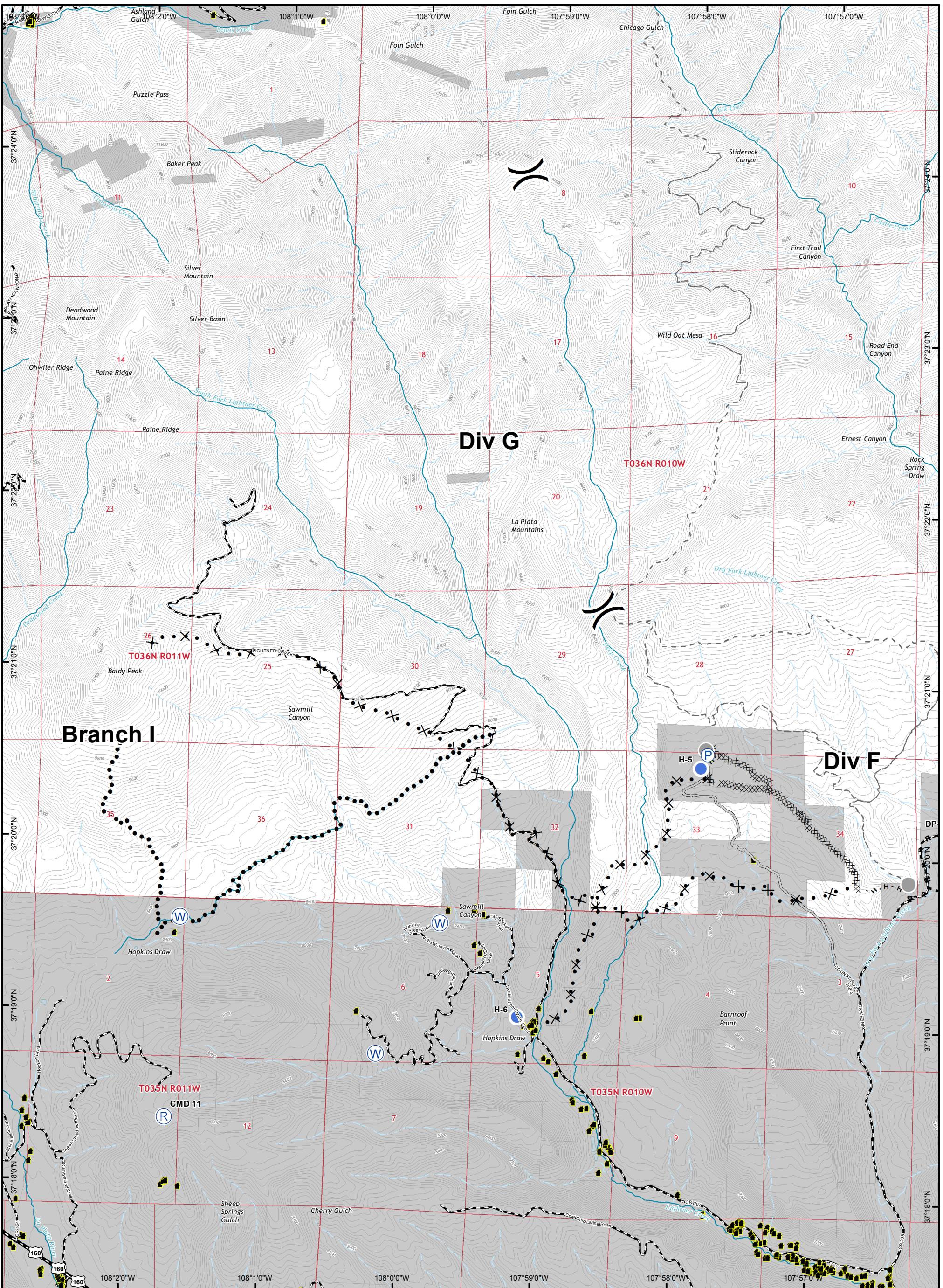
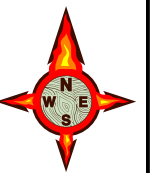


Datum: NAD 83



Uncontrolled Fire Edge
 Wildfire Daily Fire Perimeter
 County Rain Gauge





416 FIRE CO-SJF-416 Transportation Map 7/2/18

IR Perimeter as of
6/30/18 @ 2354 - 49,301 ac.



Datum NAD83



Branch III DIV X

US-550

WEMINUCHE WILDERNESS
San Juan Co.

LaPlata Co.

DIV Y

DIV Z

DIV A

DIV H

DIV G

DIV F

DIV E

DIV D

Branch I

Durango

	Wildfire Daily Fire Perimeter		Value at Risk
	Escape Route		Water Source
	Incident Command Post		Water Tank
	Dip Site		Drop Point
	Drop Point		Division Break
	Division Break		Branch Break
	Branch Break		Recreation Site
	Helibase		Highways
	Helispot		Roads
	Repeater		Trails
	Mobile Weather Unit		County Boundary
	Pump		Wilderness
	Camp		Forest Boundary
	Staging Area		
	Safety Zone		

