

# 416 FIRE CO-SJF-416 Div A, D Day 7/5/2018

IR 416 as of 7/4/2018 @ 2228 - 54,129 acres

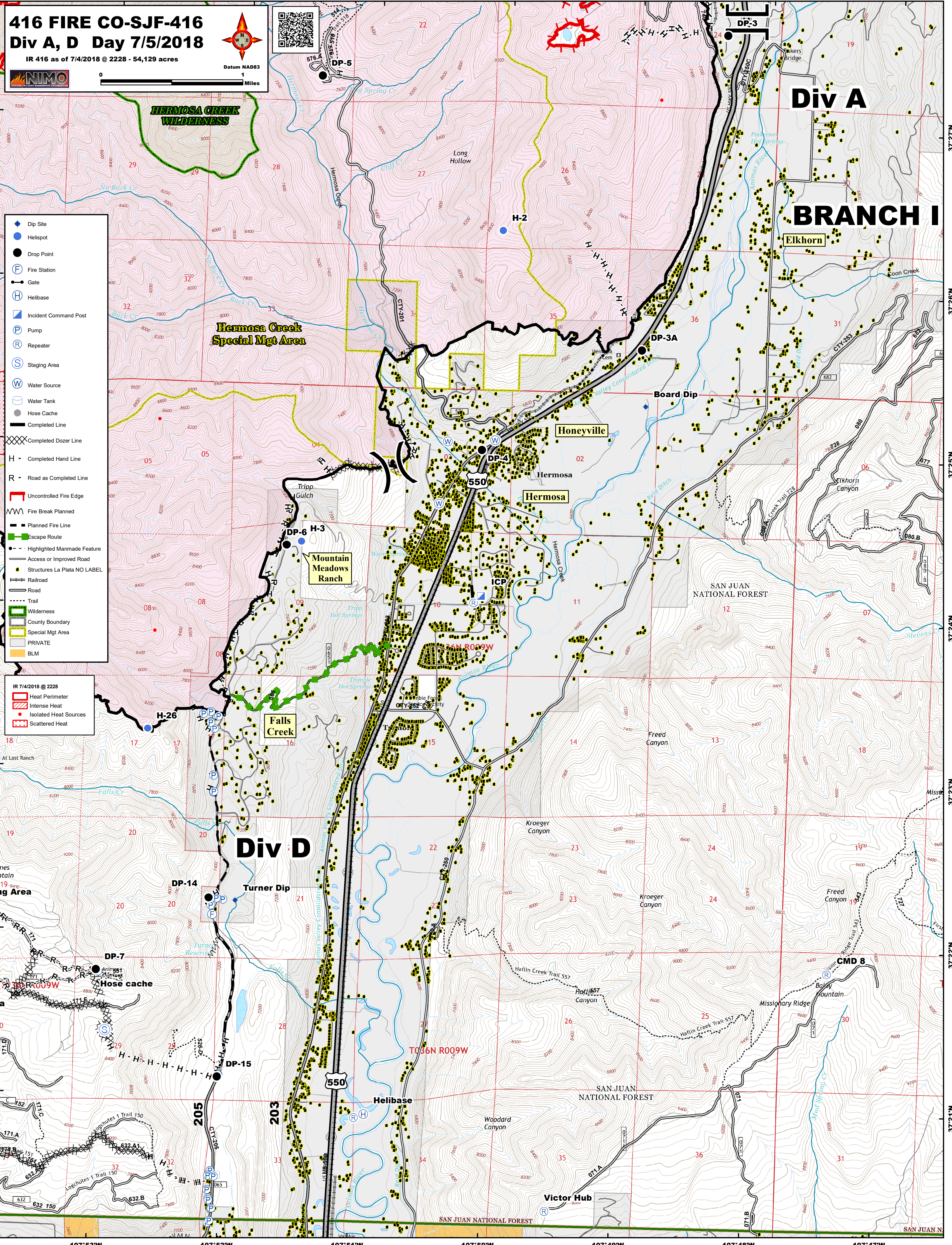


37°27'N  
37°26'N  
37°25'N  
37°24'N  
37°23'N  
37°22'N  
37°21'N

37°27'N  
37°26'N  
37°25'N  
37°24'N  
37°23'N  
37°22'N  
37°21'N

- Dip Site
- Helispot
- Drop Point
- Fire Station
- Gate
- Helibase
- Incident Command Post
- Pump
- Repeater
- Staging Area
- Water Source
- Water Tank
- Hose Cache
- Completed Line
- Completed Dozer Line
- Completed Hand Line
- Road as Completed Line
- Uncontrolled Fire Edge
- Fire Break Planned
- Planned Fire Line
- Escape Route
- Highlighted Manmade Feature
- Access or Improved Road
- Structures La Plata NO LABEL
- Railroad
- Road
- Trail
- Wilderness
- County Boundary
- Special Mgt Area
- PRIVATE
- BLM

- IR 7/4/2018 @ 2228 Heat Perimeter
- Intense Heat
- Isolated Heat Sources
- Scattered Heat



## Div A

# BRANCH I

### Hermosa Creek Special Mgt Area

## Div D

Elkhorn

Honeyville

Hermosa

Hermosa

Mountain Meadows Ranch

Falls Creek

Turner Dip

Hose cache

Helibase

Victor Hub

Board Dip

SAN JUAN NATIONAL FOREST

SAN JUAN NATIONAL FOREST

SAN JUAN NATIONAL FOREST

SAN JUAN NATIONAL FOREST