

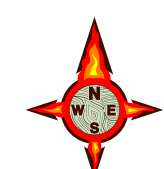
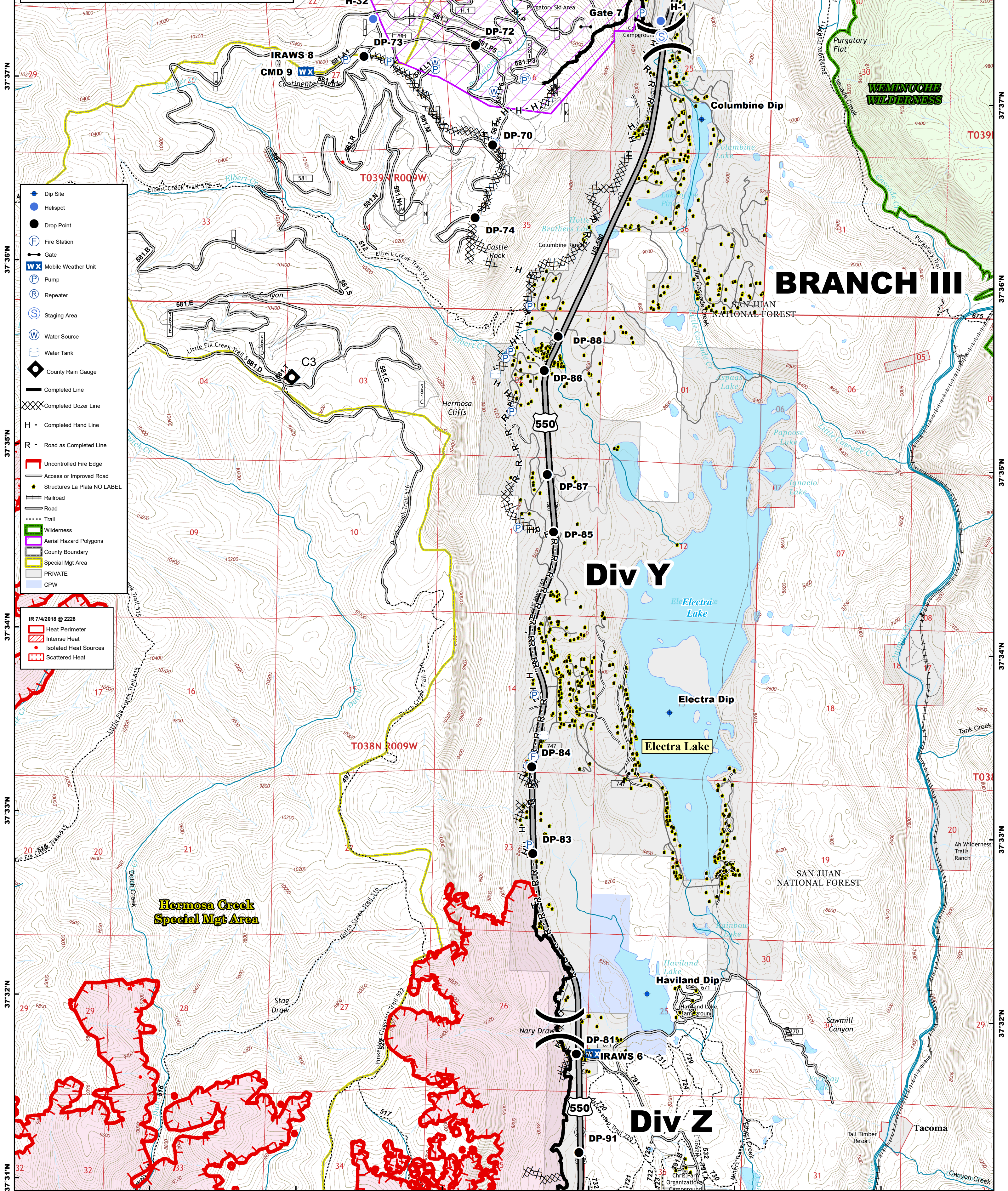


107°53'W 107°52'W 107°51'W 107°50'W 107°49'W 107°48'W 107°47'W

416 FIRE CO-SJF-416
Div Y Day 7/5/2018
 IR 416 as of 7/4/2018 @ 2228 - 54,129 acres



Datum NAD83
 1 Miles

- Dip Site
- Helispot
- Drop Point
- Fire Station
- Gate
- Mobile Weather Unit
- Pump
- Repeater
- Staging Area
- Water Source
- Water Tank
- County Rain Gauge
- Completed Line
- Completed Dozer Line
- Completed Hand Line
- Road as Completed Line
- Uncontrolled Fire Edge
- Access or Improved Road
- Structures La Plata NO LABEL
- Railroad
- Road
- Trail
- Wilderness
- Aerial Hazard Polygons
- County Boundary
- Special Mgt Area
- PRIVATE
- CPW

- IR 7/4/2018 @ 2228
- Heat Perimeter
 - Intense Heat
 - Isolated Heat Sources
 - Scattered Heat

BRANCH III

Div Y

Div Z

107°52'W 107°51'W 107°50'W 107°49'W 107°48'W 107°47'W