

416 FIRE CO-SJF-416 Div Z Day 7/5/2018

IR 416 as of 7/4/2018 @ 2228 - 54,129 acres



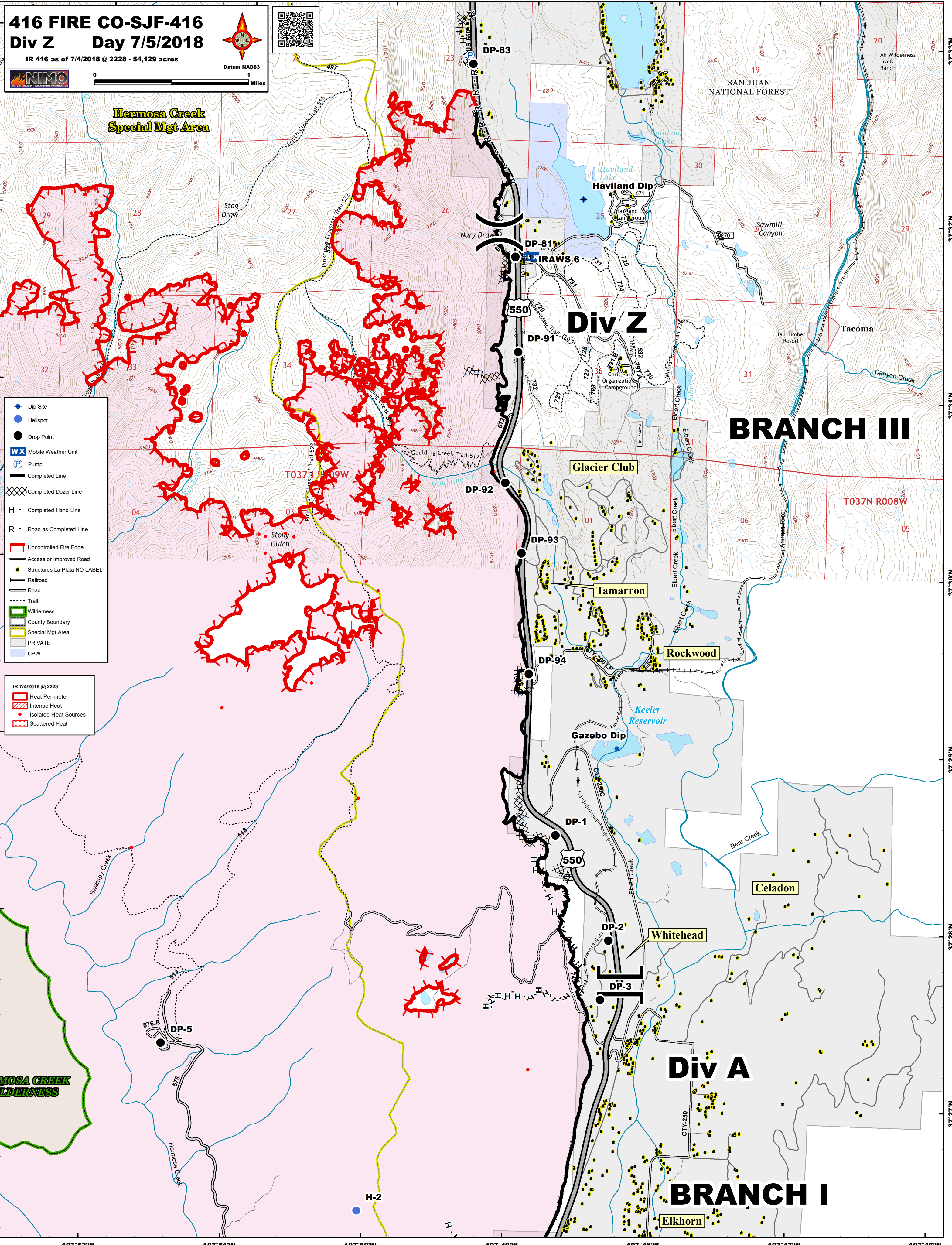
Hermosa Creek Special Mgt Area



- Dip Site
- Hellsite
- Drop Point
- Mobile Weather Unit
- Pump
- Completed Line
- Completed Dozer Line
- Completed Hand Line
- Road as Completed Line
- Uncontrolled Fire Edge
- Access or Improved Road
- Structures La Plata NO LABEL
- Railroad
- Road
- Trail
- Wilderness
- County Boundary
- Special Mgt Area
- PRIVATE
- CPW

- IR 7/4/2018 @ 2228 Heat Perimeter
- Intense Heat
- Isolated Heat Sources
- Scattered Heat

HERMOSA CREEK WILDERNESS



Div Z

BRANCH III

Div A

BRANCH I