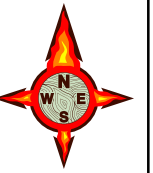




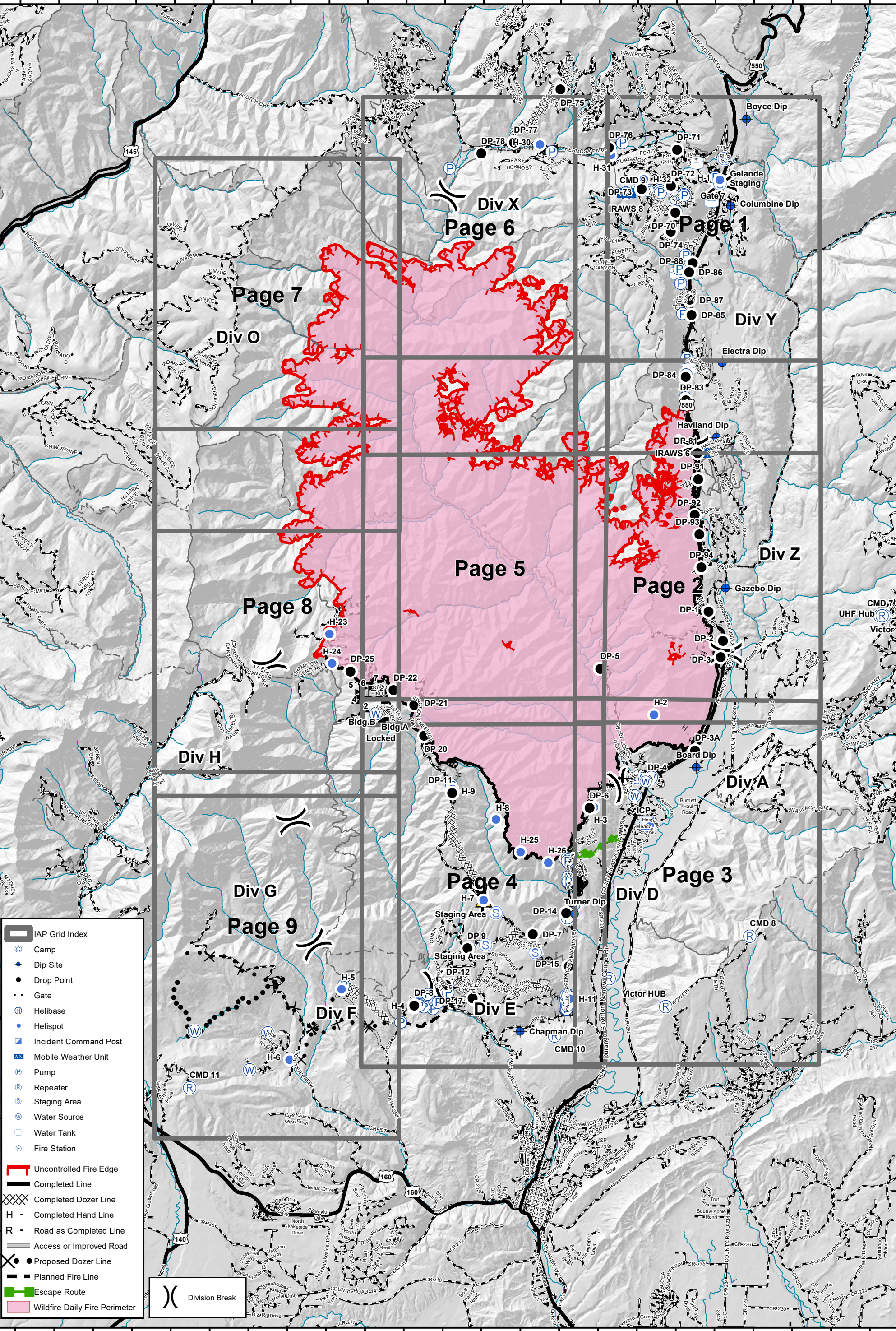
416 Fire - CO-SJF-416 IAP Grid Index - 7/9/18

0 0.5 1 2 Miles



Datum: NAD 83

108°7'0"W 108°6'0"W 108°5'0"W 108°4'0"W 108°3'0"W 108°2'0"W 108°1'0"W 108°0'0"W 107°59'0"W 107°57'0"W 107°55'0"W 107°53'0"W 107°51'0"W 107°49'0"W 107°47'0"W 107°45'0"W



- IAP Grid Index
- Camp
- Dip Site
- Drop Point
- Gate
- Helibase
- Helispot
- Incident Command Post
- Mobile Weather Unit
- Pump
- Repeater
- Staging Area
- Water Source
- Water Tank
- Fire Station
- Uncontrolled Fire Edge
- Completed Line
- Completed Dozer Line
- H - Completed Hand Line
- R - Road as Completed Line
- Access or Improved Road
- Proposed Dozer Line
- Planned Fire Line
- Escape Route
- Wildfire Daily Fire Perimeter
- Division Break

Division Break

Div X
Page 6

Page 1

Page 7

Div Y

Div O

Page 5

Div Z

Page 8

Page 2

Div H

Div A

Div G

Page 4

Div D

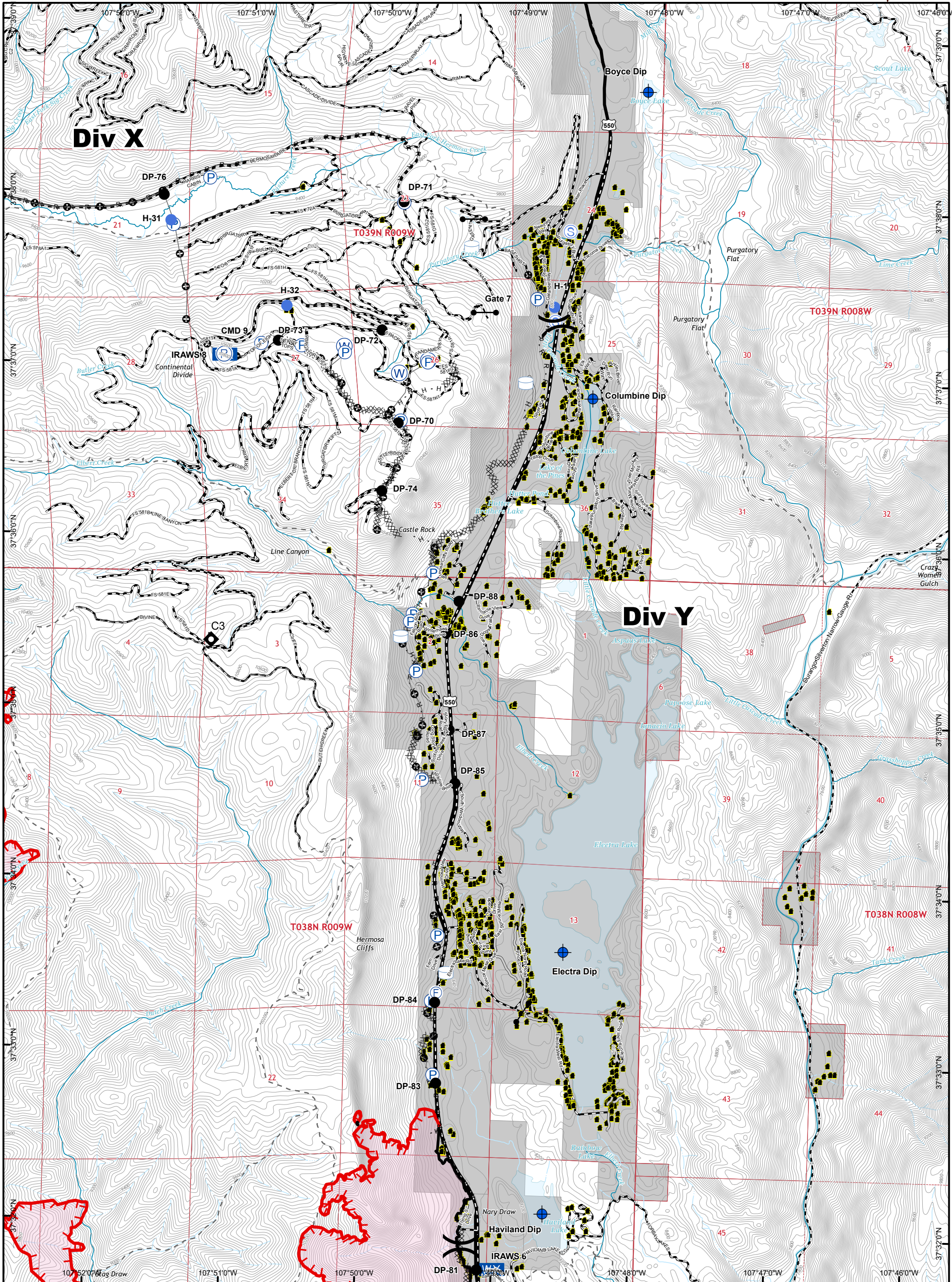
Page 3

Page 9

Div F

Div E

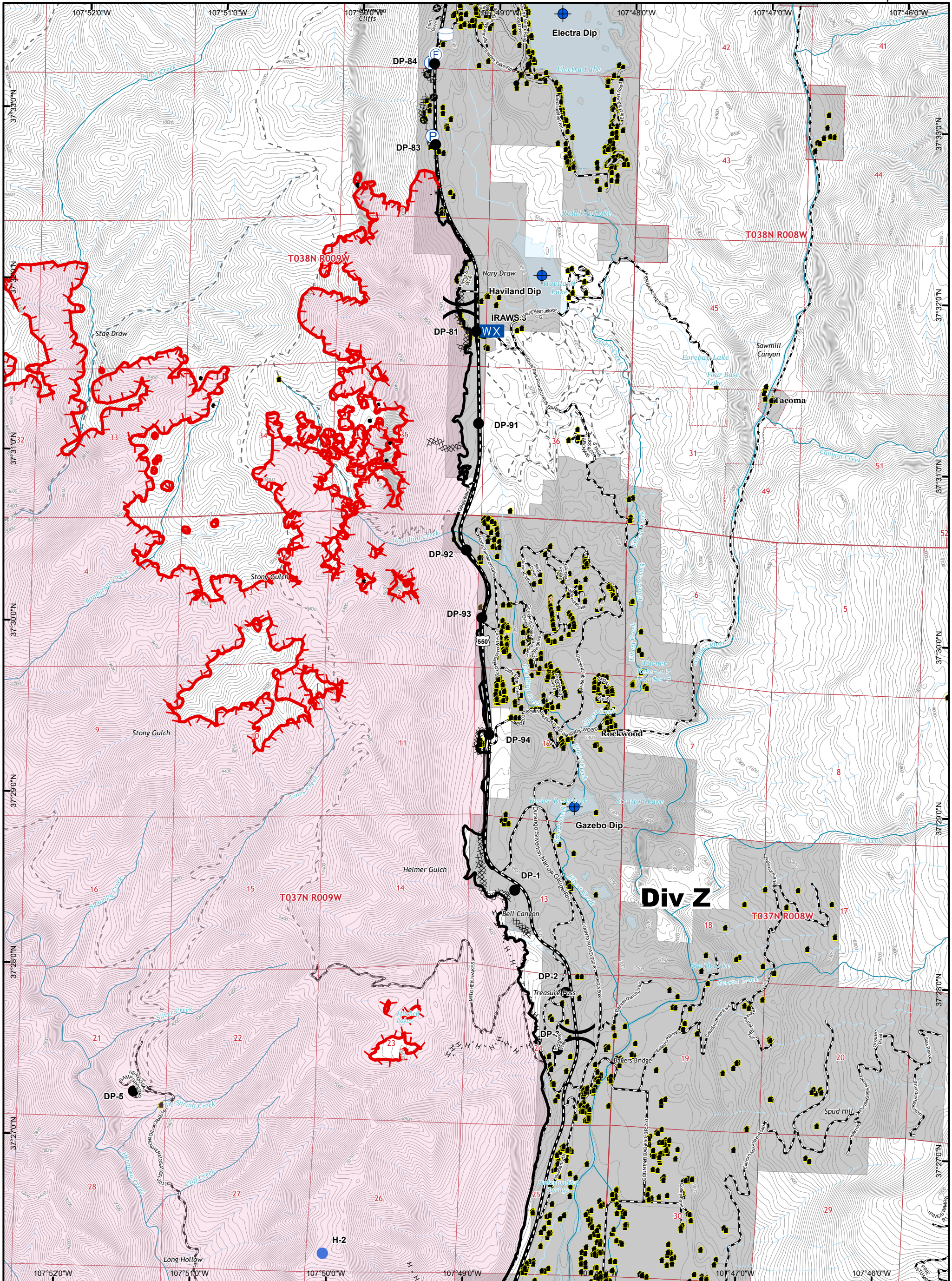
108°6'0"W 108°5'0"W 108°4'0"W 108°3'0"W 108°2'0"W 108°1'0"W 108°0'0"W 107°59'0"W 107°57'0"W 107°55'0"W 107°53'0"W 107°51'0"W 107°49'0"W 107°47'0"W 107°45'0"W



Dip Site	Helispot	Staging Area	Completed Line	Access Road
Drop Point	Mobile Weather Unit	Water Source	Completed Dozer Line	Other
Fire Station	Pump	Water Tank	Completed Hand Line	Wildfire Daily Fire Perimeter
Gate	Repeater	Uncontrolled Fire Edge	Road as Completed Line	County Rain Gauge



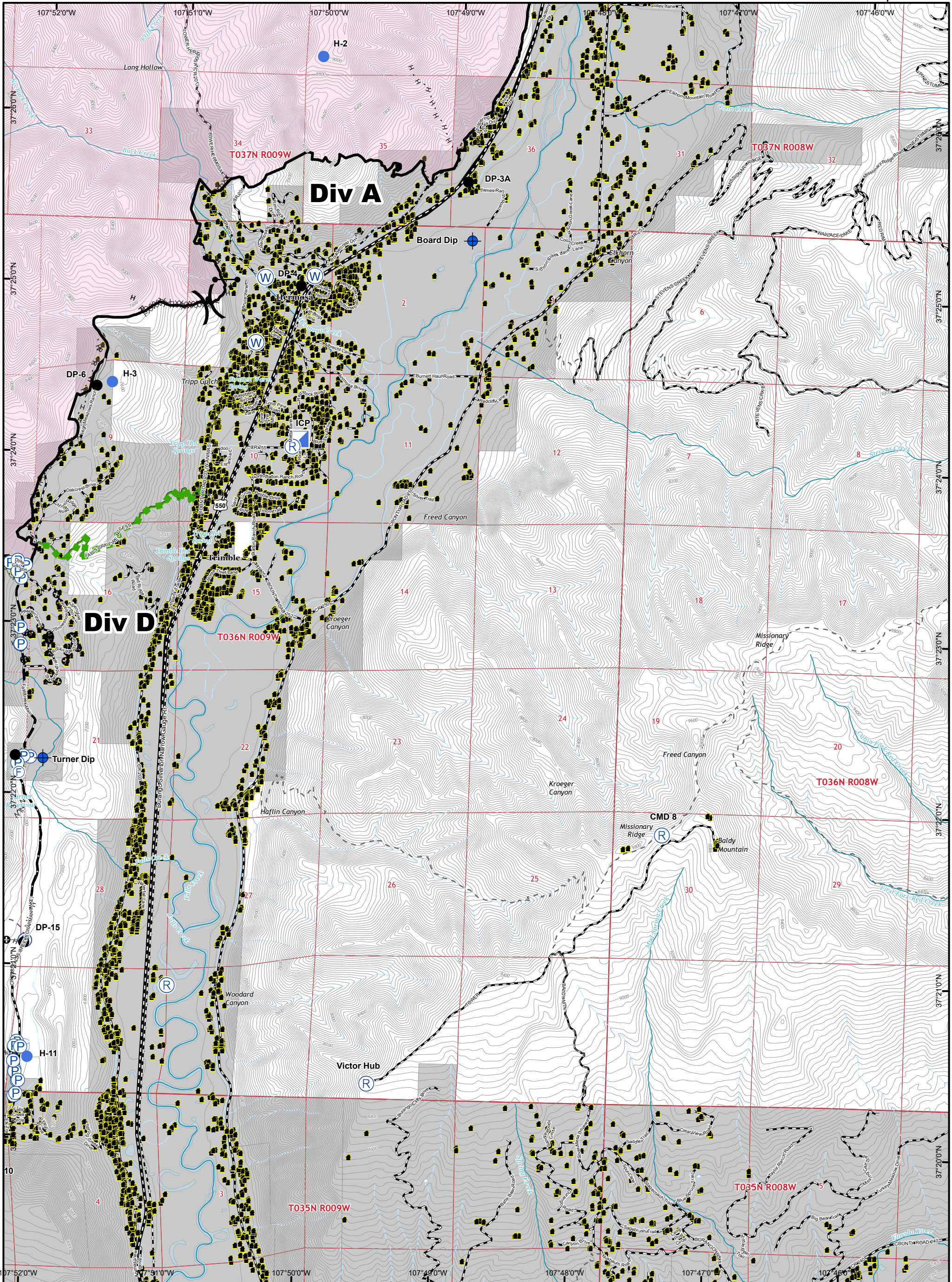
Datum: NAD 83

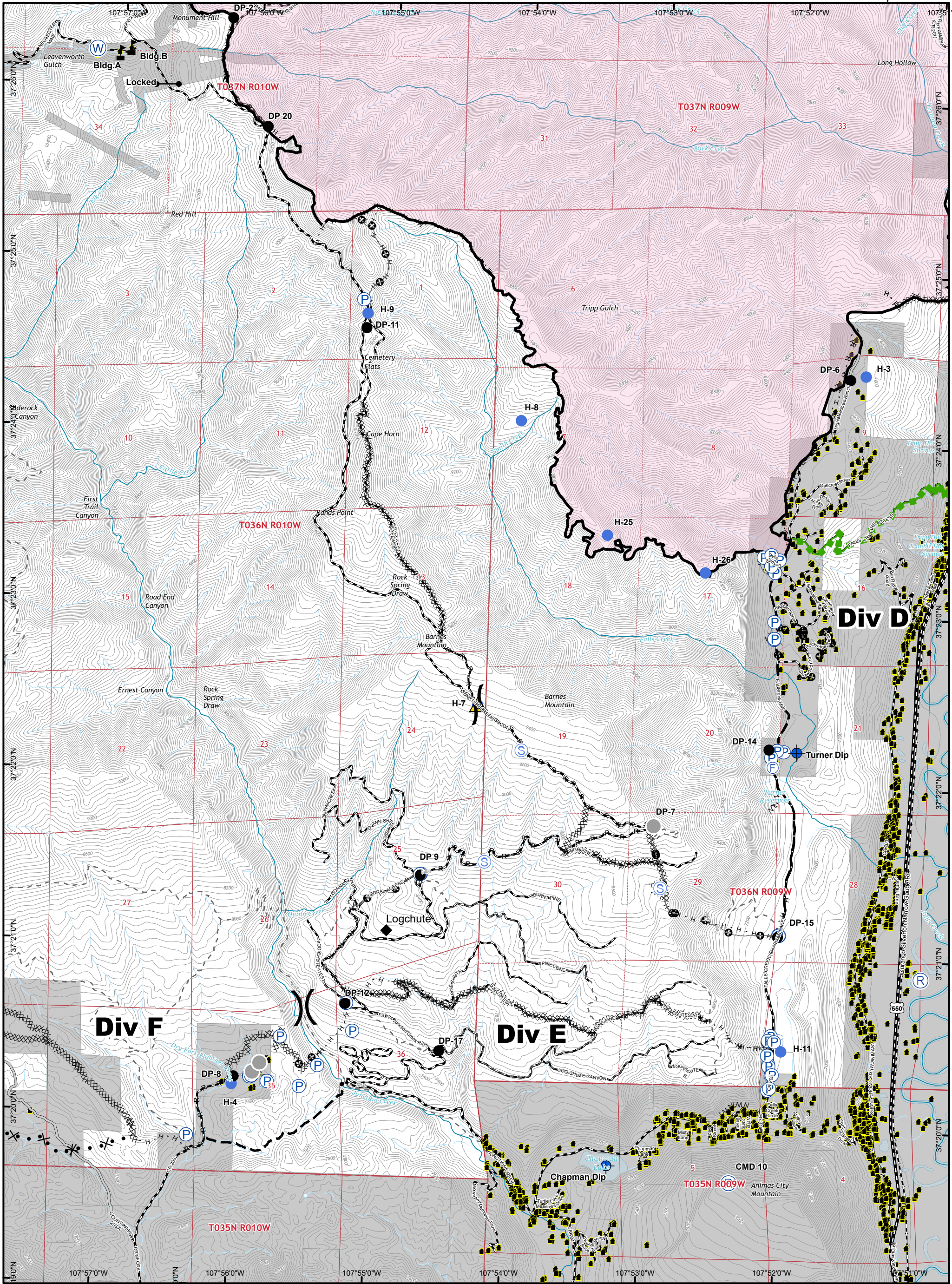


Dip Site	Helispot	Uncontrolled Fire Edge	Road as Completed Line
Drop Point	Mobile Weather Unit	Completed Line	Access Road
Fire Station	Pump	Completed Dozer Line	Other
Gate	Water Tank	Completed Hand Line	Wildfire Daily Fire Perimeter



Datum: NAD 83





Div F

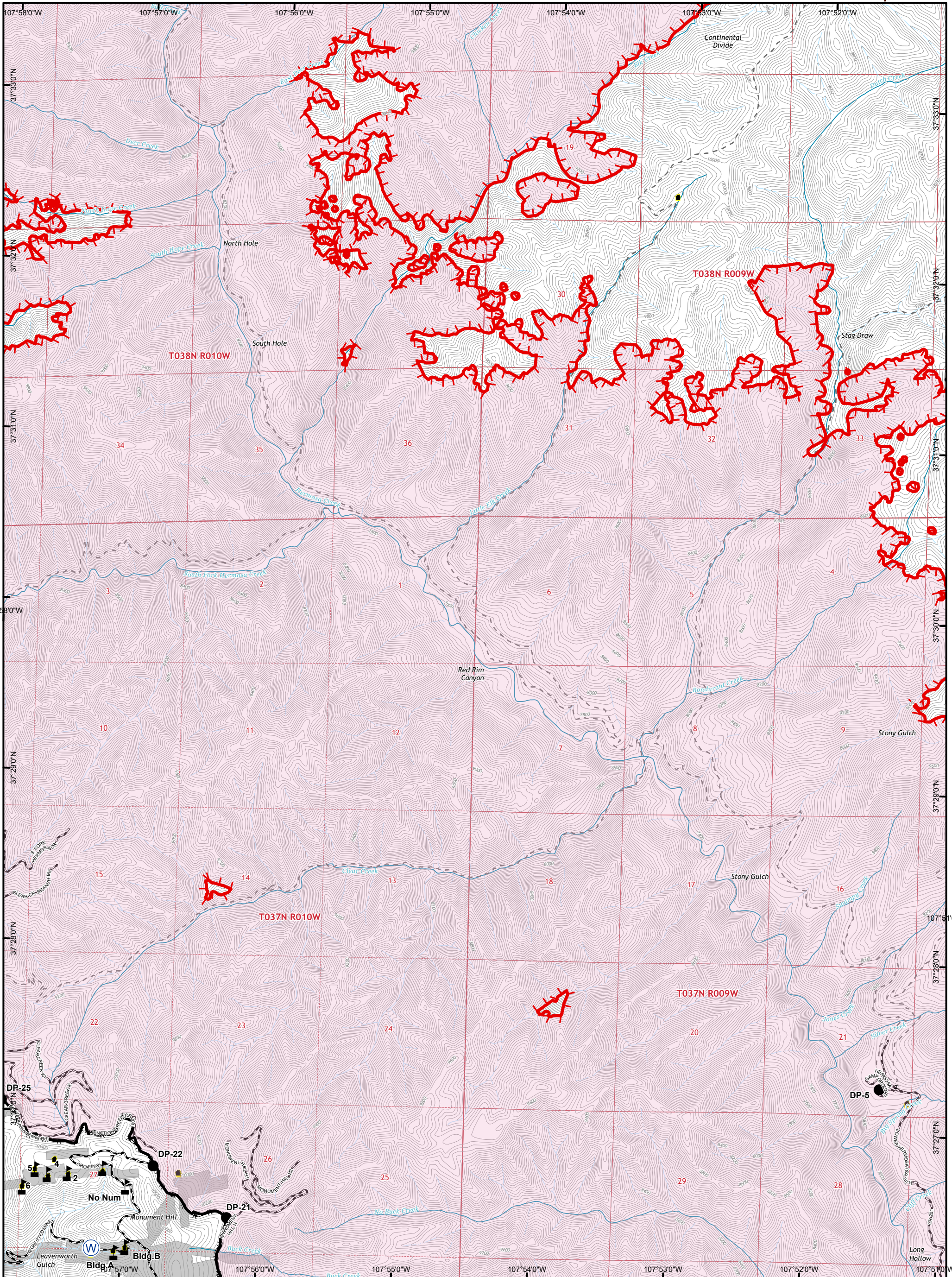
Div E

Div D

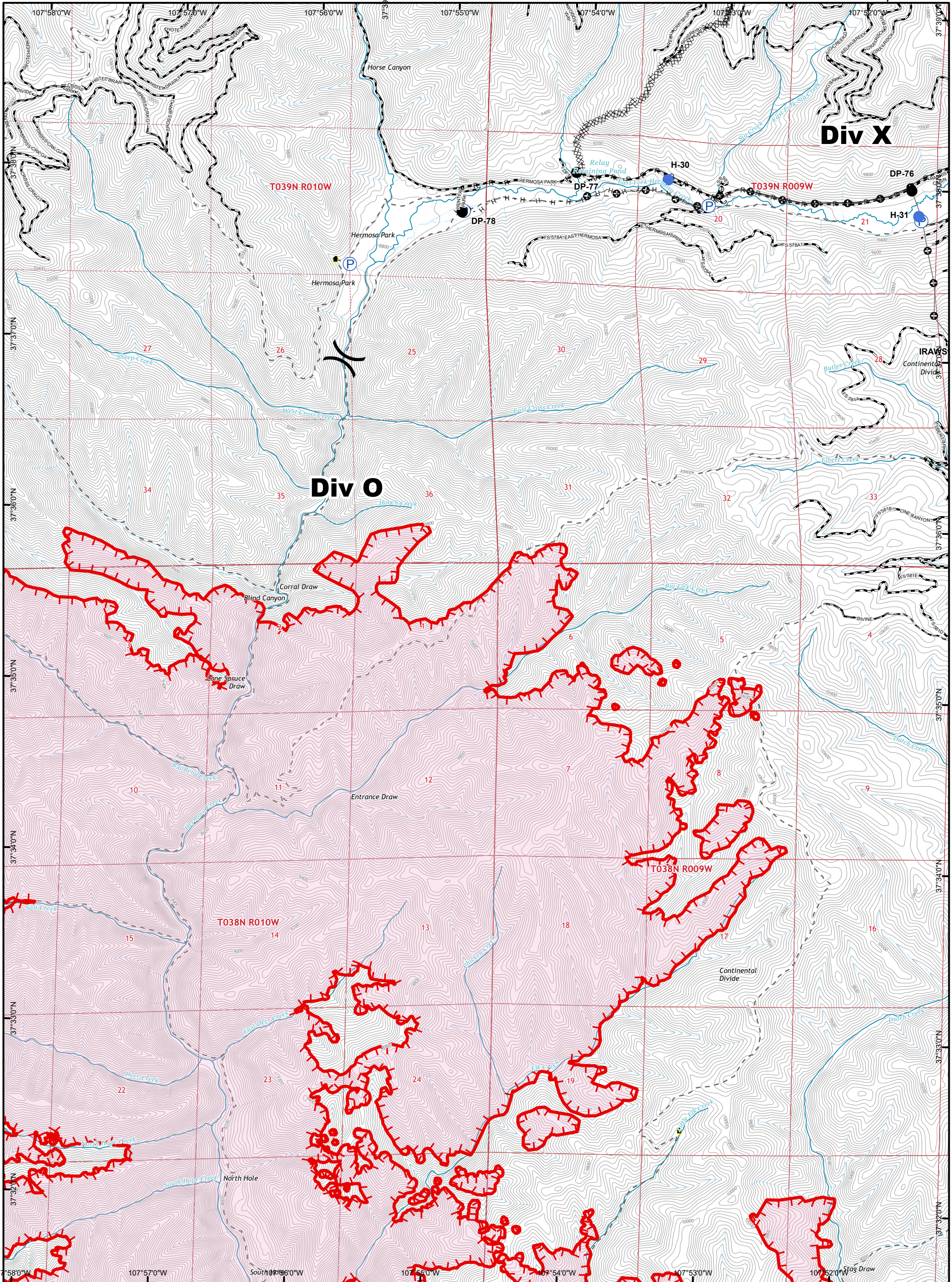
● Hose Cache	— Gate	⊙ Staging Area	— Completed Line	×• Proposed Dozer Line	▭ Wildfire Daily Fire Perimeter
◆ Dip Site	● Helispot	⊙ Water Source	×× Completed Dozer Line	⋯ Fire Break Planned	◆ RAWS
● Drop Point	Ⓟ Pump	⊙ Water Tank	H · Completed Hand Line	— Planned Fire Line	
Ⓡ Fire Station	Ⓡ Repeater	Ⓡ Value at Risk	R · Road as Completed Line	— Escape Route	
⚠ Safety Zone		— Access Road		⊙ Other	



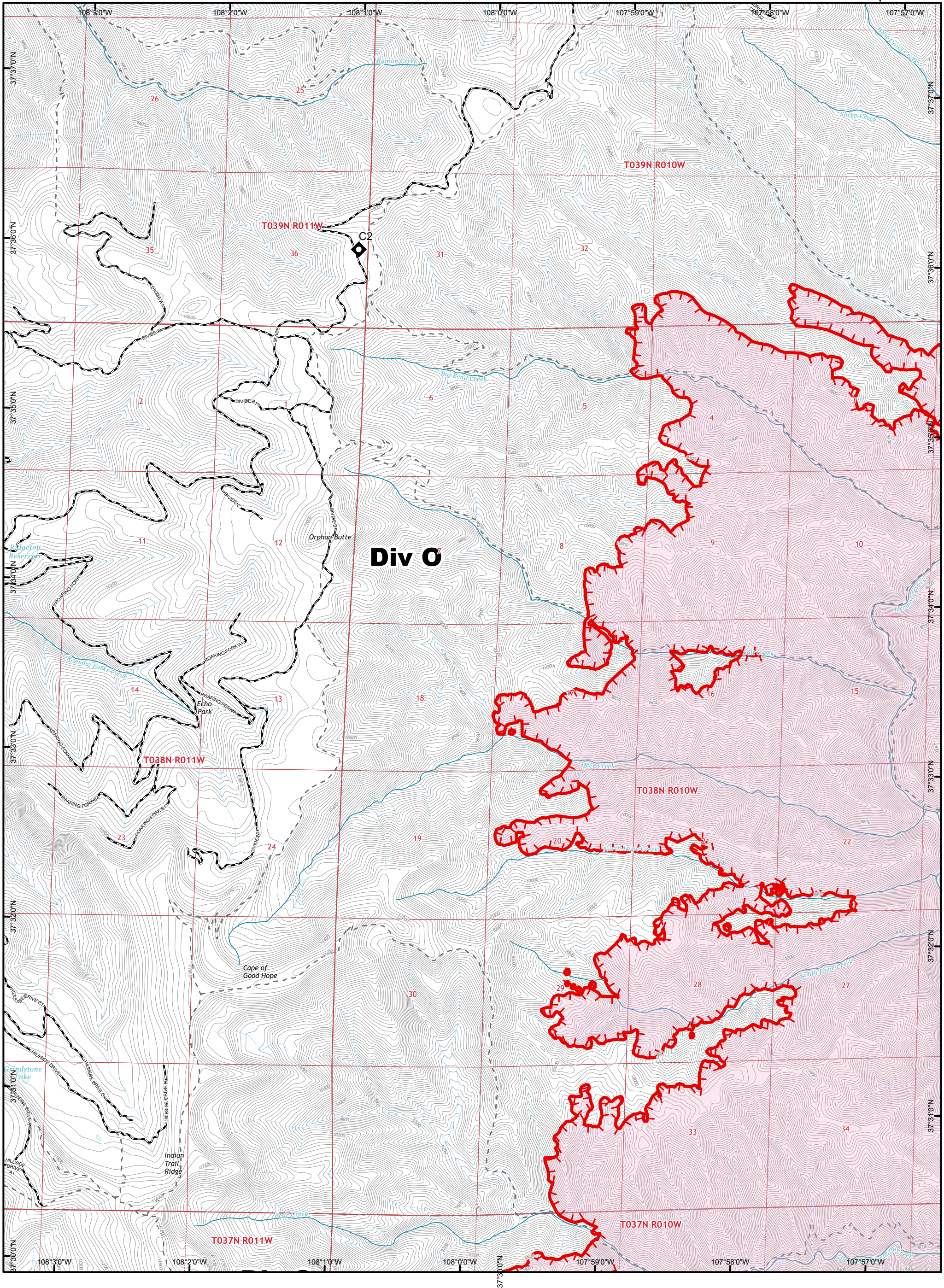
Datum: NAD 83



● Drop Point	⚠ Value at Risk	H · Completed Hand Line
→ Gate	▬ Uncontrolled Fire Edge	R · Road as Completed Line
⊕ Water Source	▬ Completed Line	▭ Wildfire Daily Fire Perimeter



● Drop Point	— Uncontrolled Fire Edge	R - Road as Completed Line
● Helispot	X-X Completed Dozer Line	⊙ Other
⊙ Pump	H - Completed Hand Line	Wildfire Daily Fire Perimeter

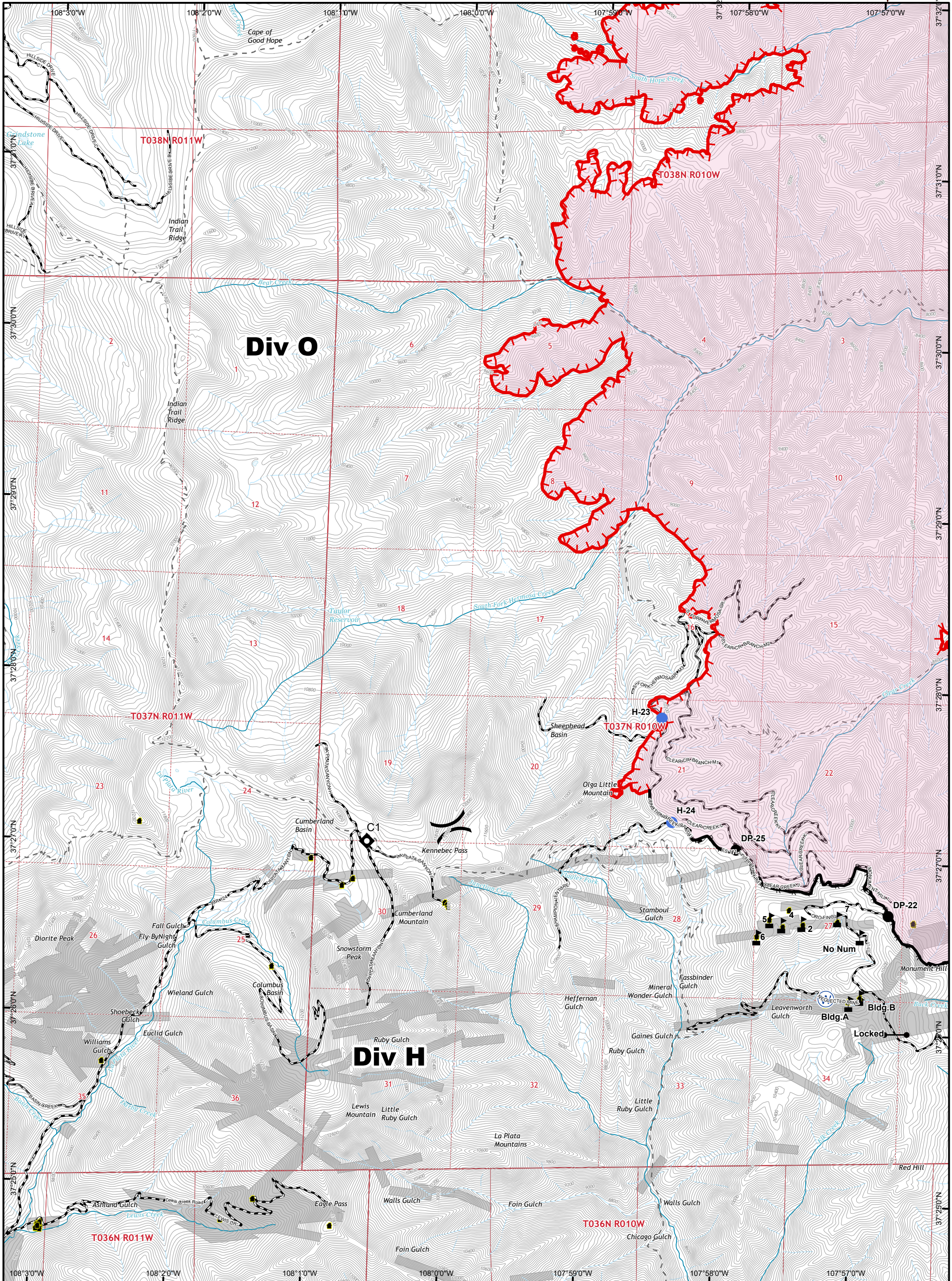


Div 0

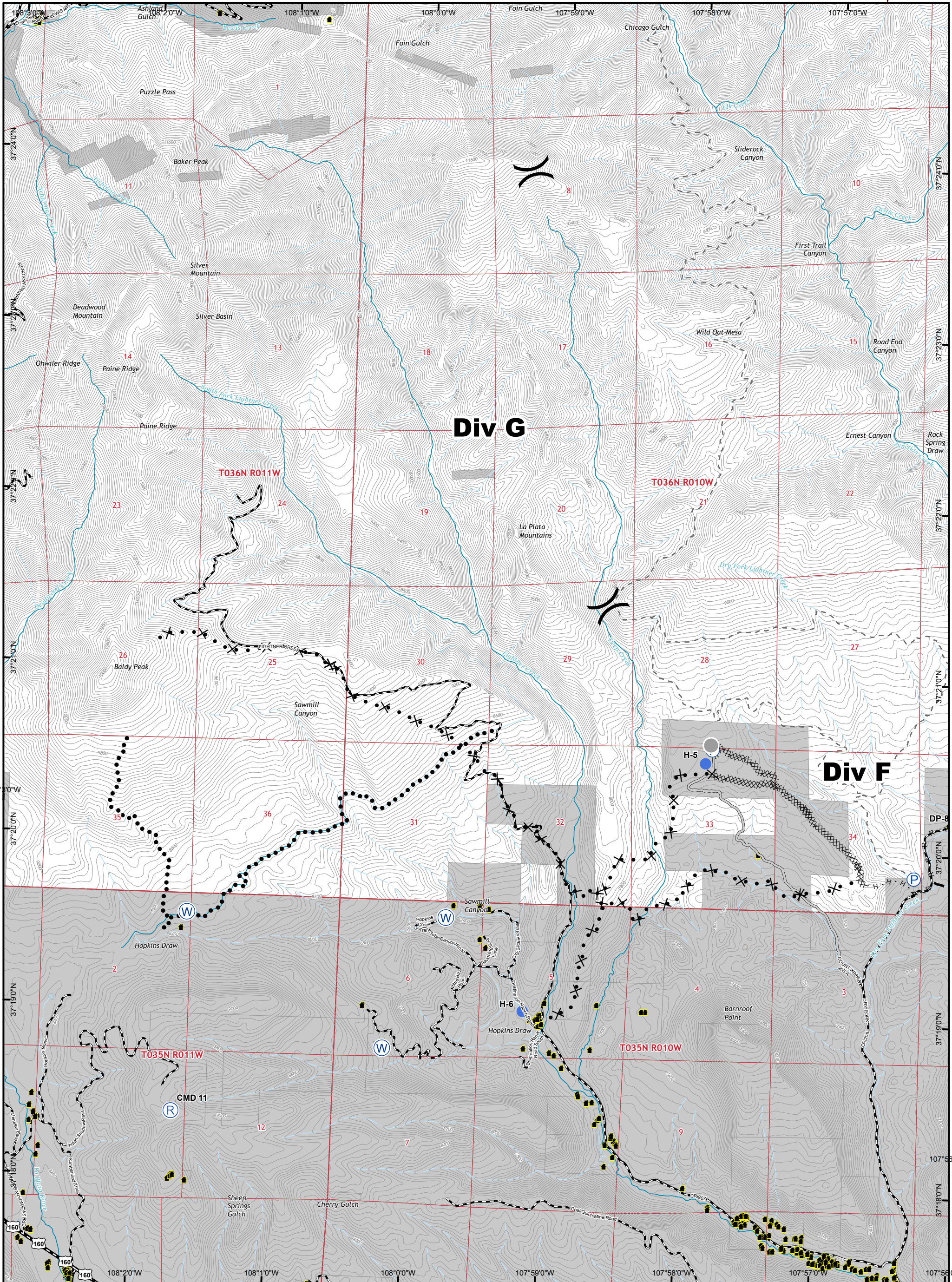
	Uncontrolled Fire Edge
	Wildfire Daily Fire Perimeter
	County Rain Gauge



Datum: NAD 83



● Drop Point	⚠ Value at Risk	🔴 Wildfire Daily Fire Perimeter
➡ Gate	🔴 Uncontrolled Fire Edge	📍 County Rain Gauge
● Helispot	— Completed Line	
🌊 Water Source	R · Road as Completed Line	



● Hose Cache	Ⓡ Repeater	H - Completed Hand Line	- - Planned Fire Line
● Helispot	Ⓢ Water Source	R - Road as Completed Line	• • Planned Secondary Line
Ⓟ Pump	⊗⊗ Completed Dozer Line	— Access Road	⊕ Other
		⊗ Proposed Dozer Line	

416 FIRE CO-SJF-416 Transportation Map 7/9/18

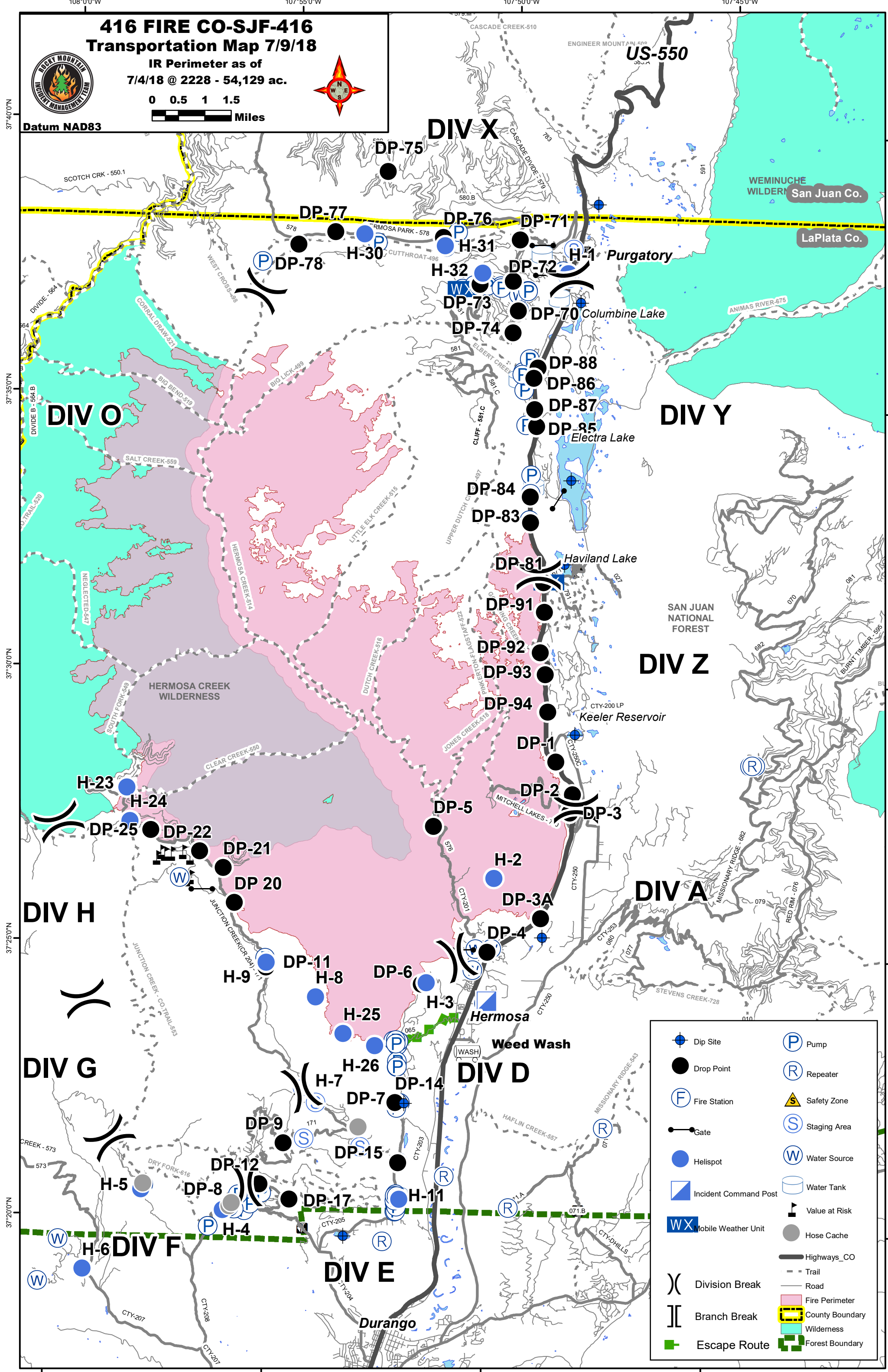
IR Perimeter as of
7/4/18 @ 2228 - 54,129 ac.



0 0.5 1 1.5
Miles



Datum NAD83



37°40'0"N
37°35'0"N
37°30'0"N
37°25'0"N
37°20'0"N

37°40'0"N
37°35'0"N
37°30'0"N
37°25'0"N
37°20'0"N

108°0'0"W 107°55'0"W 107°50'0"W 107°45'0"W