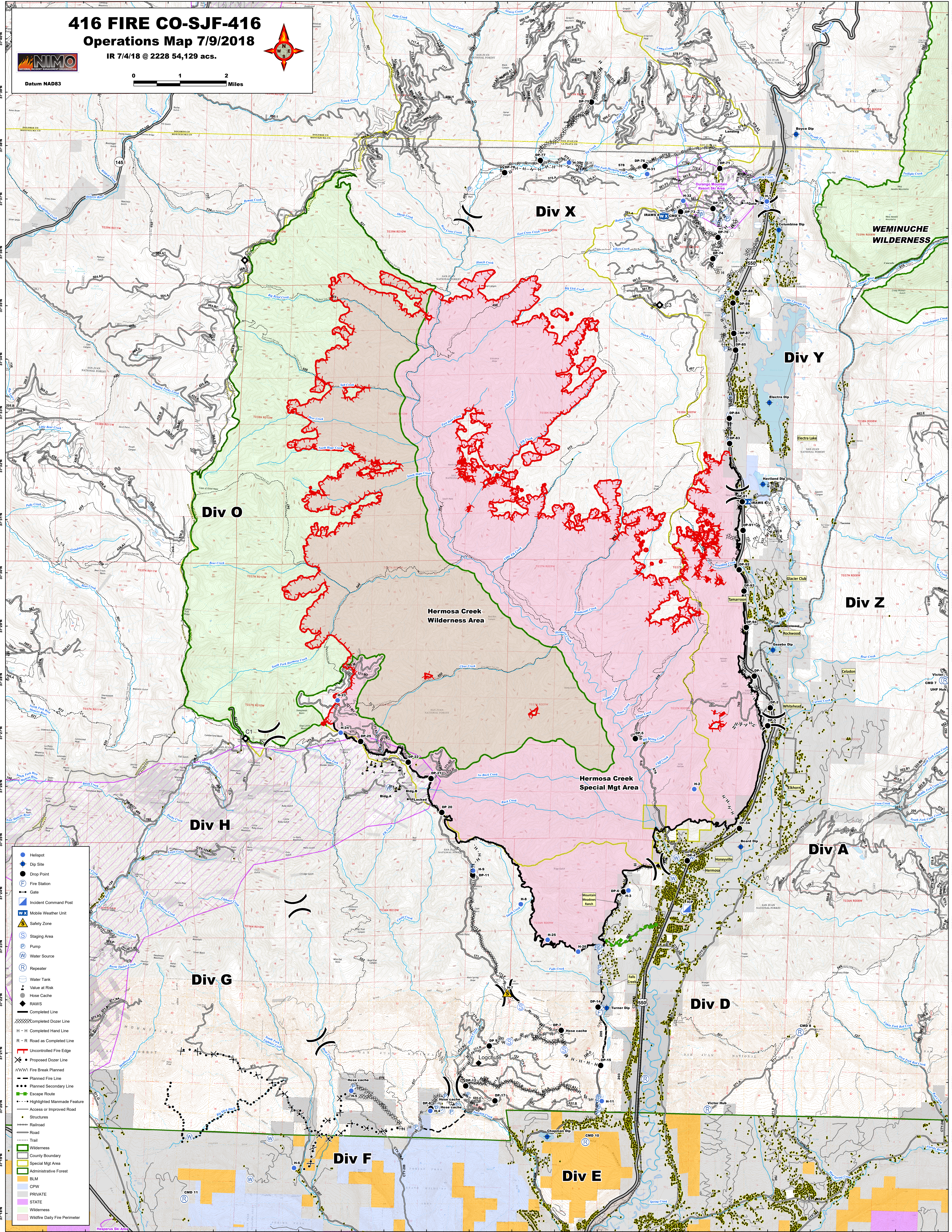


# 416 FIRE CO-SJF-416 Operations Map 7/9/2018

IR 7/4/18 @ 2228 54,129 acs.



Datum NAD83



- Helipoint
- Dip Site
- Drop Point
- Ⓜ Fire Station
- ➡ Gate
- Ⓜ Incident Command Post
- Ⓜ Mobile Weather Unit
- ⚠ Safety Zone
- Ⓜ Staging Area
- Ⓜ Pump
- Ⓜ Water Source
- Ⓜ Repeater
- Ⓜ Water Tank
- Ⓜ Value at Risk
- Ⓜ Hose Cache
- Ⓜ RAWS
- Completed Line
- Ⓜ Completed Dozer Line
- H - H Completed Hand Line
- R - R Road as Completed Line
- Ⓜ Uncontrolled Fire Edge
- Ⓜ Proposed Dozer Line
- Ⓜ Fire Break Planned
- Ⓜ Planned Fire Line
- Ⓜ Planned Secondary Line
- Ⓜ Escape Route
- Ⓜ Highlighted Manmade Feature
- Ⓜ Access or Improved Road
- Ⓜ Structures
- Ⓜ Railroad
- Ⓜ Road
- Ⓜ Trail
- Ⓜ Wilderness
- Ⓜ County Boundary
- Ⓜ Special Mgt Area
- Ⓜ Administrative Forest
- Ⓜ BLM
- Ⓜ CPW
- Ⓜ PRIVATE
- Ⓜ STATE
- Ⓜ Wilderness
- Ⓜ Wildfire Daily Fire Perimeter