

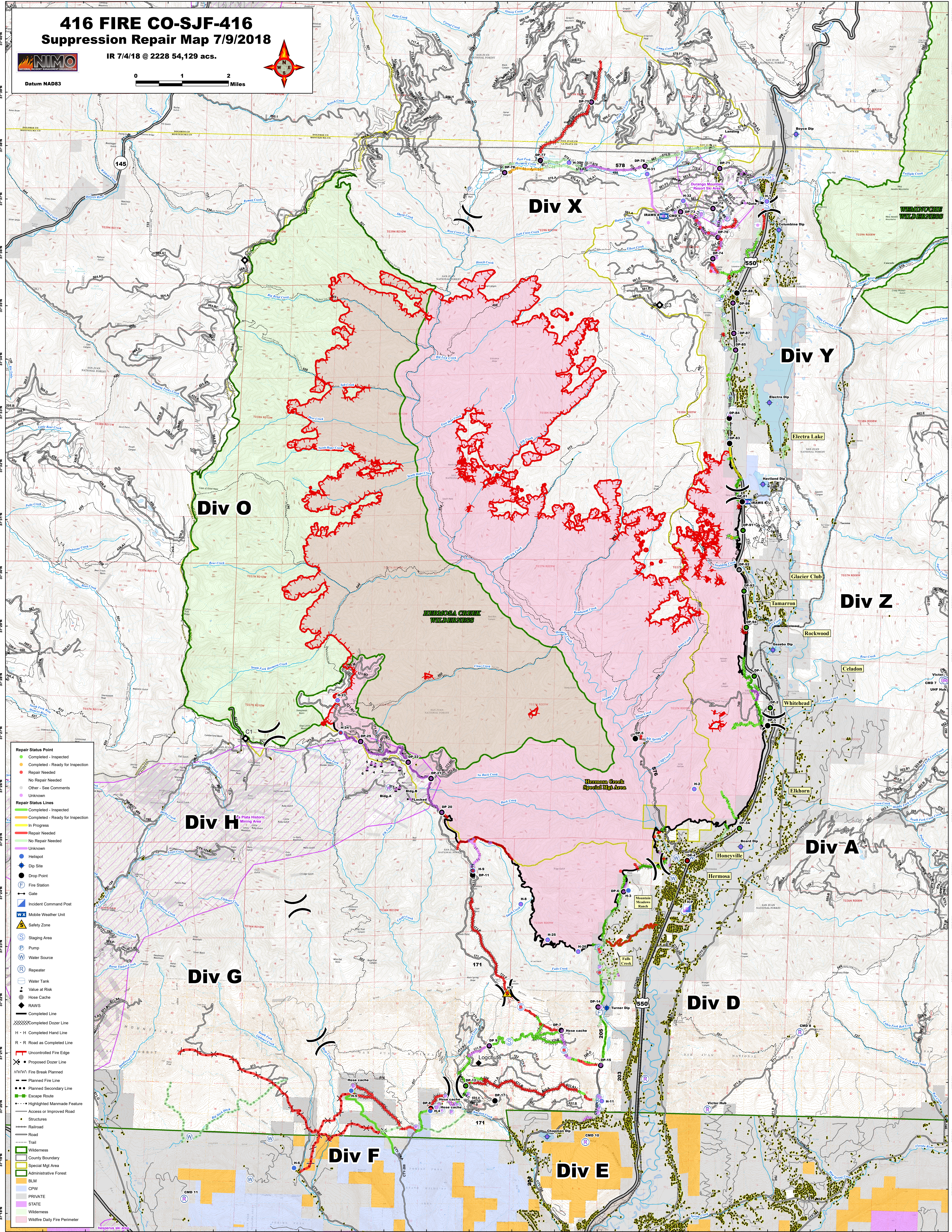
416 FIRE CO-SJF-416 Suppression Repair Map 7/9/2018

IR 7/4/18 @ 2228 54,129 acs.



Datum NAD83

0 1 2 Miles



- Repair Status Point**
 - Completed - Inspected
 - Completed - Ready for Inspection
 - Repair Needed
 - No Repair Needed
 - Other - See Comments
 - Unknown
- Repair Status Lines**
 - Completed - Inspected
 - Completed - Ready for Inspection
 - In Progress
 - Repair Needed
 - No Repair Needed
 - Unknown
- Other Symbols**
 - Heliport
 - Dip Site
 - Drop Point
 - Fire Station
 - Gate
 - Incident Command Post
 - Mobile Weather Unit
 - Safety Zone
 - Staging Area
 - Pump
 - Water Source
 - Repeater
 - Water Tank
 - Value at Risk
 - Hose Cache
 - RAWS
 - Completed Line
 - Completed Dozer Line
 - H - H Completed Hand Line
 - R - R Road as Completed Line
 - Uncontrolled Fire Edge
 - Proposed Dozer Line
 - WWV Fire Break Planned
 - Planned Fire Line
 - Planned Secondary Line
 - Escape Route
 - Highlighted Manmade Feature
 - Access or Improved Road
 - Structures
 - Railroad
 - Road
 - Trail
 - Wilderness
 - County Boundary
 - Special Mgt Area
 - Administrative Forest
 - BLM
 - CPW
 - PRIVATE
 - STATE
 - Wilderness
 - Wildfire Daily Fire Perimeter