

416 FIRE CO-SJF-416

Div A, D Transport Map Book

07/09/18



Datum NAD83

1 Miles



37°27'N
37°26'N
37°25'N
37°24'N
37°23'N
37°22'N
37°21'N

37°27'N
37°26'N
37°25'N
37°24'N
37°23'N
37°22'N
37°21'N

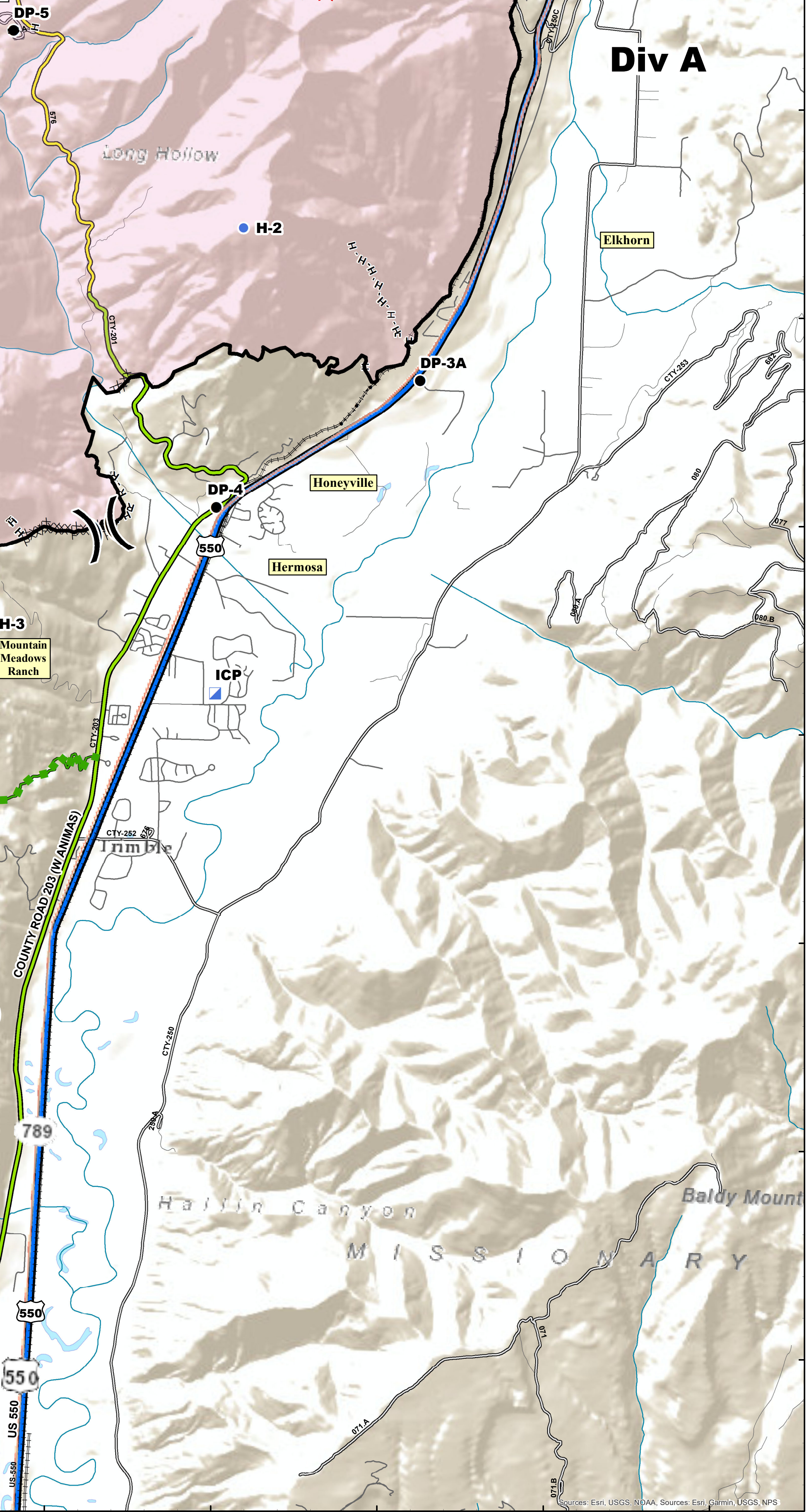
HERMOSA CREEK WILDERNESS

Div A



Hermosa Creek Special Mgt Area

Legend

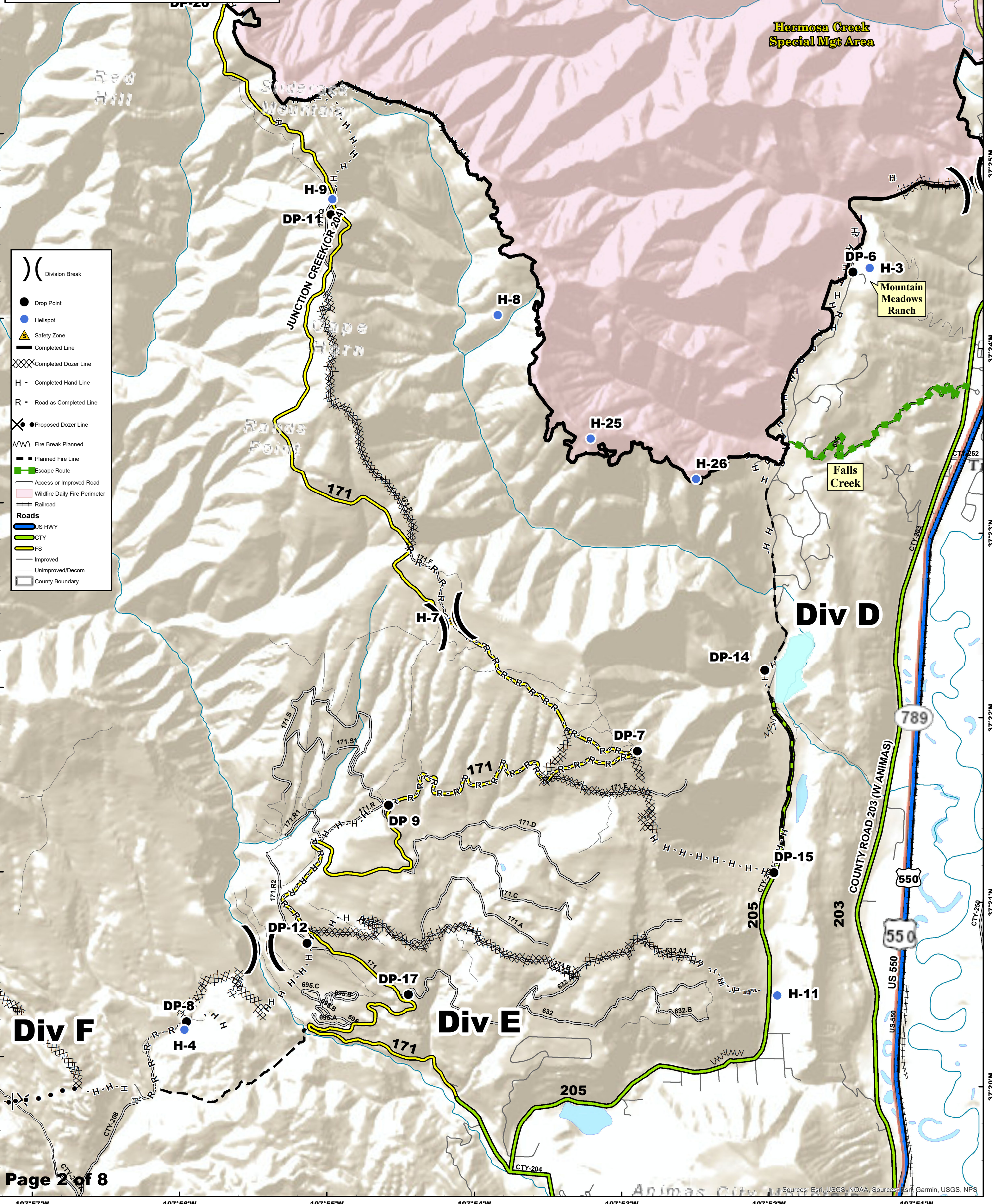
- () Division Break
- Drop Point
- Helispot
- ▣ Incident Command Post
- Completed Line
- ⊗ Completed Dozer Line
- H - Completed Hand Line
- R - Road as Completed Line
- ▬ Uncontrolled Fire Edge
- ▬ Fire Break Planned
- ▬ Planned Fire Line
- ▬ Escape Route
- ▬ Highlighted Manmade Feature
- ▬ Access or Improved Road
- ▬ Wildfire Daily Fire Perimeter
- ▬ Railroad
- Roads**
- ▬ US HWY
- ▬ CTY
- ▬ FS
- ▬ Improved
- ▬ Unimproved/Decom
- ▬ County Boundary



416 FIRE CO-SJF-416
Div E, H Transport Map Book
 07/09/18

Datum NAD83
 0 1 Miles



- () Division Break
- Drop Point
- Helispot
- ▲ Safety Zone
- Completed Line
- ⊗ Completed Dozer Line
- H - Completed Hand Line
- R - Road as Completed Line
- ⊗ Proposed Dozer Line
- ⋈ Fire Break Planned
- Planned Fire Line
- Escape Route
- Access or Improved Road
- Wildfire Daily Fire Perimeter
- Railroad
- Roads**
- US HWY
- CTY
- FS
- Improved
- Unimproved/Decom
- County Boundary

Div G

) (Division Break

● Drop Point

● Helispot

— Completed Line

XXXX Completed Dozer Line

H - Completed Hand Line

R - Road as Completed Line

⊗ Proposed Dozer Line

— Planned Fire Line

● Planned Secondary Line

— Access or Improved Road

Wildfire Daily Fire Perimeter

Roads

FS

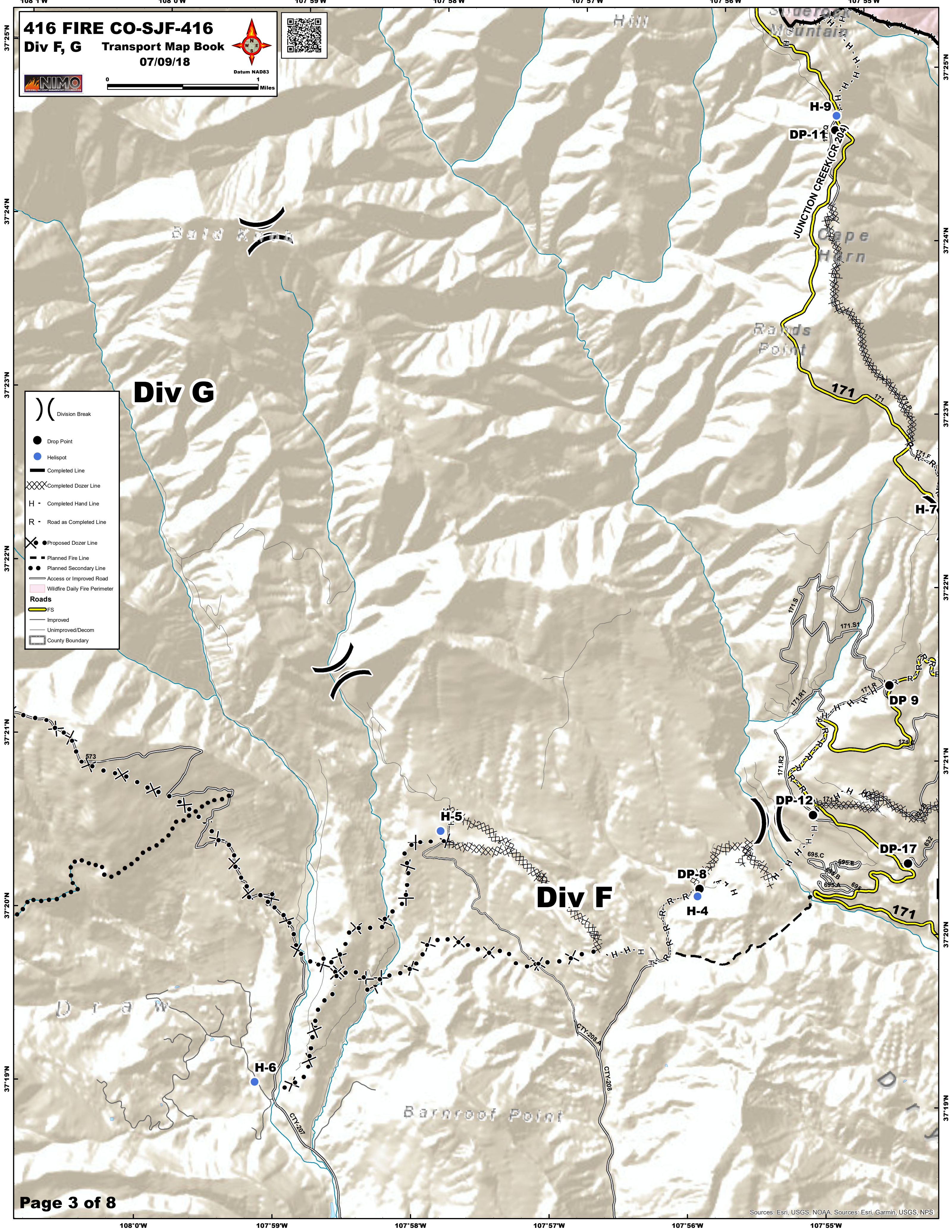
Improved

Unimproved/Decom

County Boundary

Div G

Div F



416 FIRE CO-SJF-416

Div H, O Transport Map Book

07/09/18



Div O

Div H

	Division Break
	Drop Point
	Helispot
	Completed Line
	Completed Dozer Line
	Completed Hand Line
	Road as Completed Line
	Uncontrolled Fire Edge
	Wildfire Daily Fire Perimeter
Roads	
	FS
	Improved
	Unimproved/Decom
	County Boundary

La Plata Historic Mining Area

108°2'W 108°1'W 108°0'W 107°59'W 107°58'W 107°57'W 107°56'W

416 FIRE CO-SJF-416

Div 0 Transport Map Book

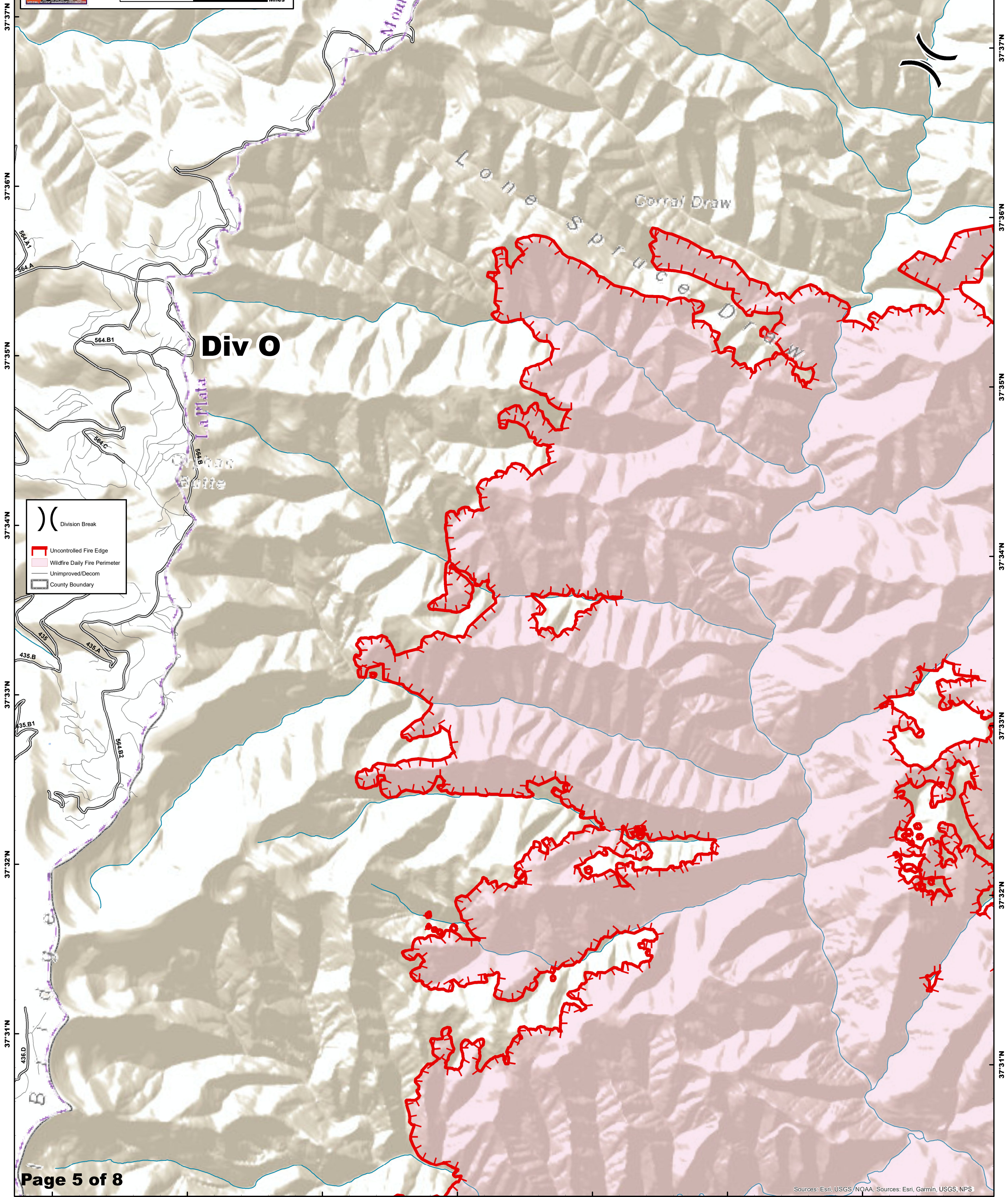
07/09/18



Datum NAD83



0 1 Miles

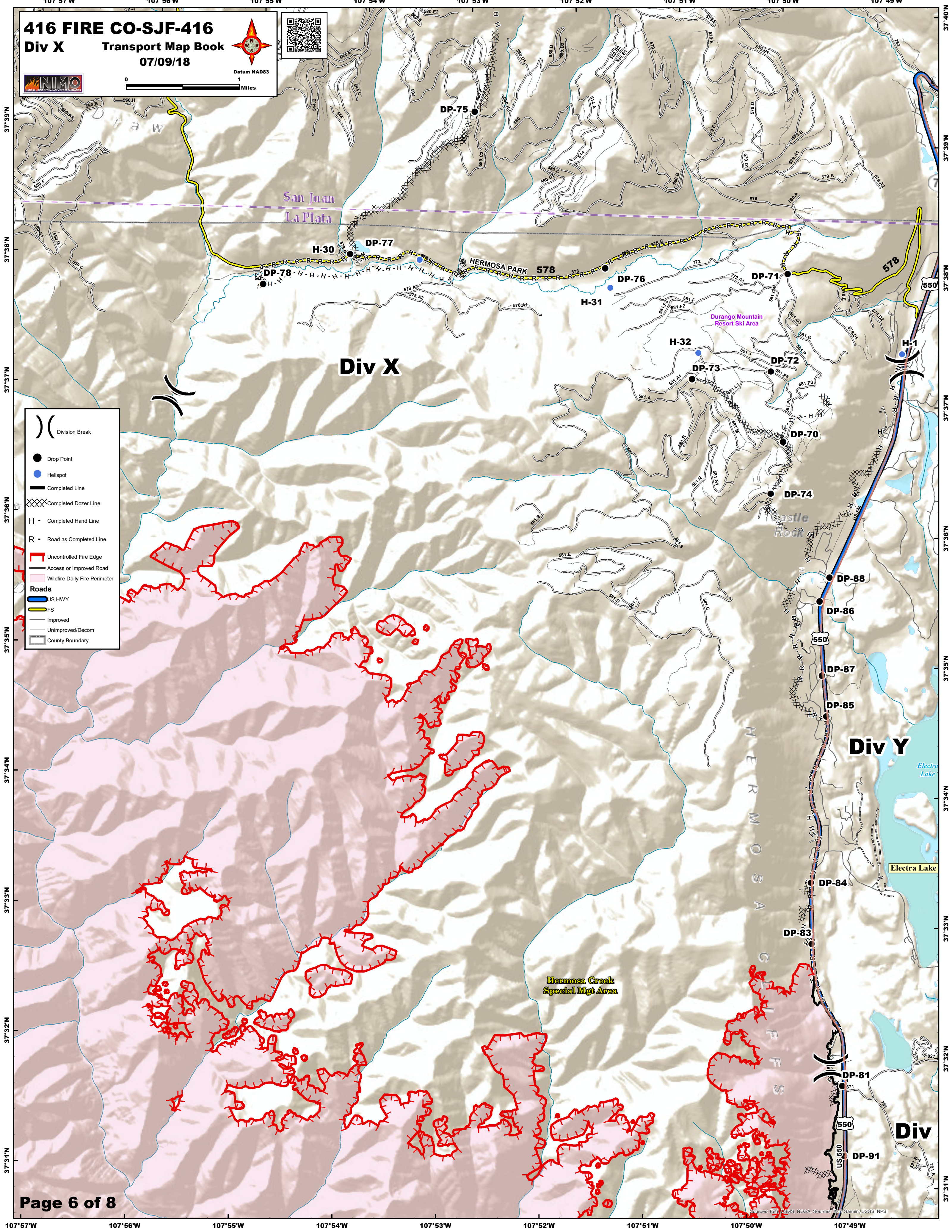


37°37'N
37°36'N
37°35'N
37°34'N
37°33'N
37°32'N
37°31'N

37°37'N
37°36'N
37°35'N
37°34'N
37°33'N
37°32'N
37°31'N

108°2'W 108°1'W 108°0'W 107°59'W 107°58'W 107°57'W 107°56'W

416 FIRE CO-SJF-416
Div X Transport Map Book
07/09/18



416 FIRE CO-SJF-416

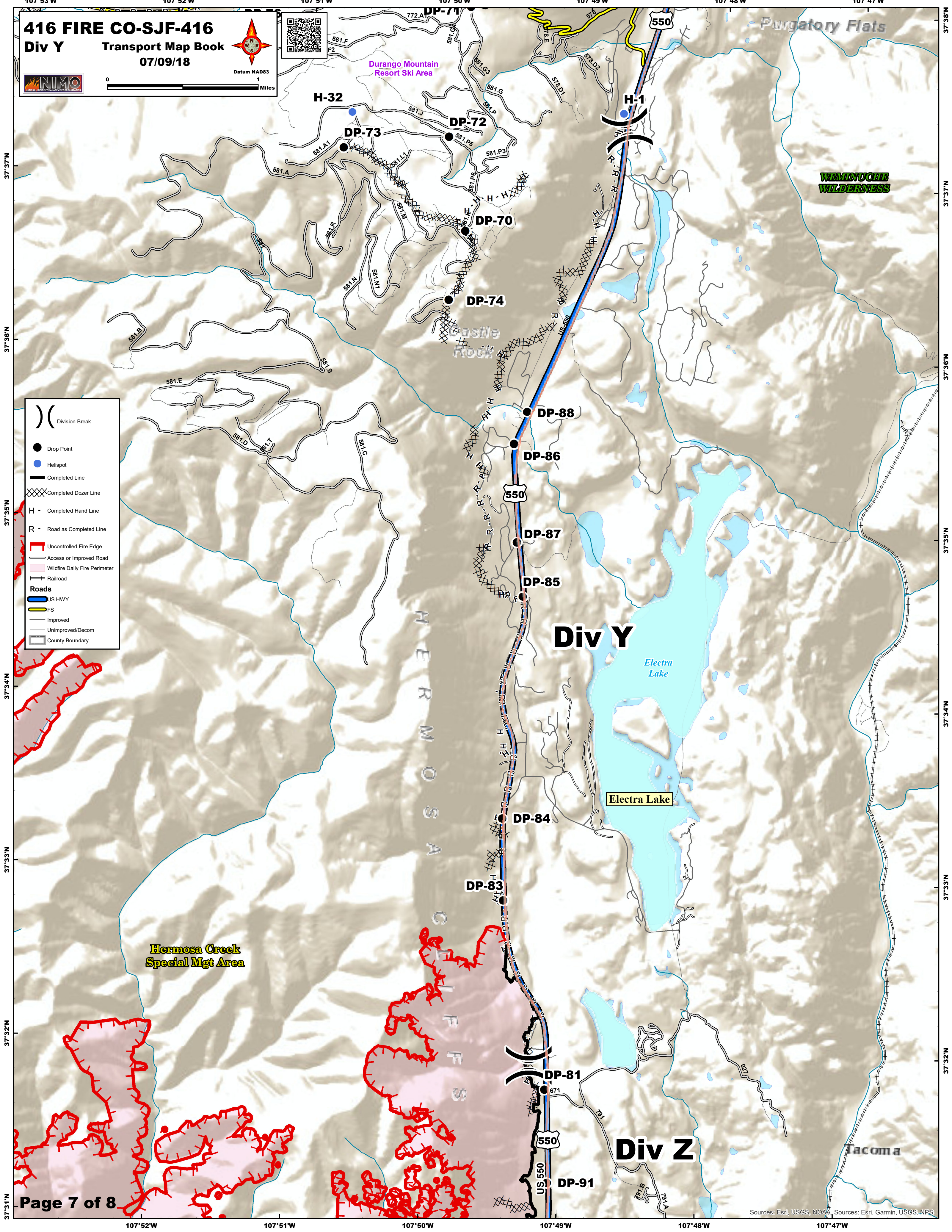
Div Y Transport Map Book

07/09/18



Datum NAD83

1
Miles



() Division Break

● Drop Point

● Helispot

— Completed Line

XXXX Completed Dozer Line

H Completed Hand Line

R Road as Completed Line

— Uncontrolled Fire Edge

— Access or Improved Road

— Wildfire Daily Fire Perimeter

— Railroad

Roads

- US HWY
- FS
- Improved
- Unimproved/Decom
- County Boundary

416 FIRE CO-SJF-416

Div Z Transport Map Book

07/09/18



**Hermosa Creek
Special Mgt Area**

Legend

- Division Break
- Drop Point
- Helispot
- Completed Line
- Completed Dozer Line
- Completed Hand Line
- Road as Completed Line
- Uncontrolled Fire Edge
- Access or Improved Road
- Wildfire Daily Fire Perimeter
- Railroad

Roads

- US HWY
- FS
- Improved
- Unimproved/Decom
- County Boundary

DP-83

DP-81

DP-91

DP-92

DP-93

DP-94

DP-1

DP-2

DP-3

DP-5

H-2

Div Z

Div A

Tacoma

Glacier Club

Tamarron

Rockwood

Keeler Reservoir

Celadon

Whitehead

Elkhorn

**MOSA CREEK
WILDERNESS**

Long Hollow