



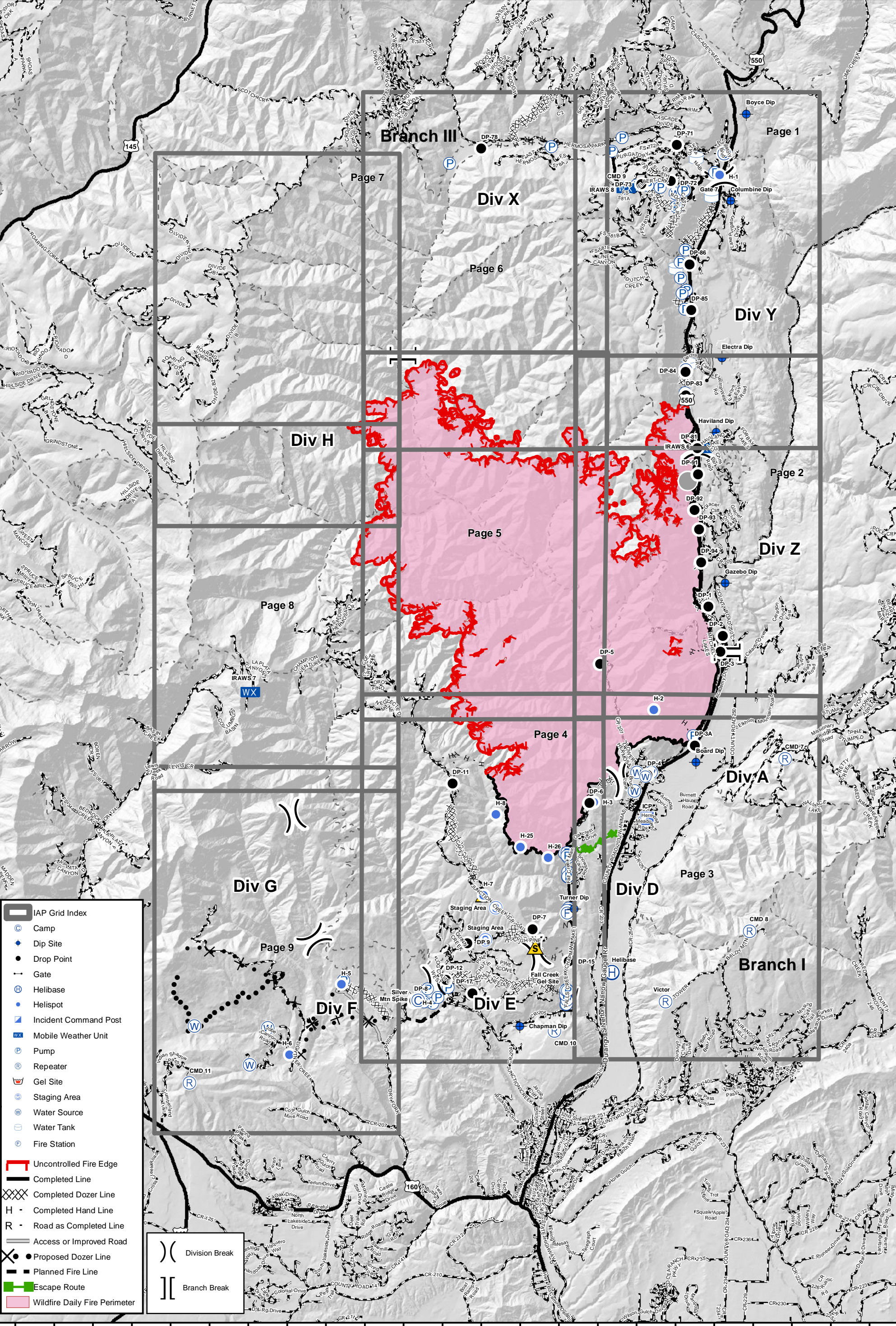
# 416 Fire - CO-SJF-416 IAP Grid Index - 6/22/18

0 0.5 1 2 Miles

Datum: NAD 83  
GISS - TS - 6/21/18, 1630hrs



108°7'0"W 108°6'0"W 108°5'0"W 108°4'0"W 108°3'0"W 108°2'0"W 108°1'0"W 108°0'0"W 107°59'0"W 107°57'0"W 107°55'0"W 107°53'0"W 107°51'0"W 107°49'0"W 107°47'0"W 107°45'0"W



- IAP Grid Index
- Camp
- Dip Site
- Drop Point
- Gate
- Helibase
- Helispot
- Incident Command Post
- Mobile Weather Unit
- Pump
- Repeater
- Gel Site
- Staging Area
- Water Source
- Water Tank
- Fire Station
- Uncontrolled Fire Edge
- Completed Line
- Completed Dozer Line
- H - Completed Hand Line
- R - Road as Completed Line
- Access or Improved Road
- Proposed Dozer Line
- Planned Fire Line
- Escape Route
- Wildfire Daily Fire Perimeter
- Division Break
- Branch Break

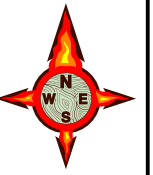
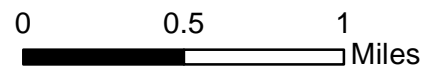
108°6'0"W 108°5'0"W 108°4'0"W 108°3'0"W 108°2'0"W 108°1'0"W 108°0'0"W 107°59'0"W 107°57'0"W 107°55'0"W 107°53'0"W 107°51'0"W 107°49'0"W 107°47'0"W 107°45'0"W

37°41'0"N 37°40'0"N 37°39'0"N 37°38'0"N 37°37'0"N 37°36'0"N 37°35'0"N 37°34'0"N 37°33'0"N 37°32'0"N 37°31'0"N 37°30'0"N 37°29'0"N 37°28'0"N 37°27'0"N 37°26'0"N 37°25'0"N 37°24'0"N 37°23'0"N 37°22'0"N 37°21'0"N 37°20'0"N 37°19'0"N 37°18'0"N 37°17'0"N 37°16'0"N 37°15'0"N 37°14'0"N

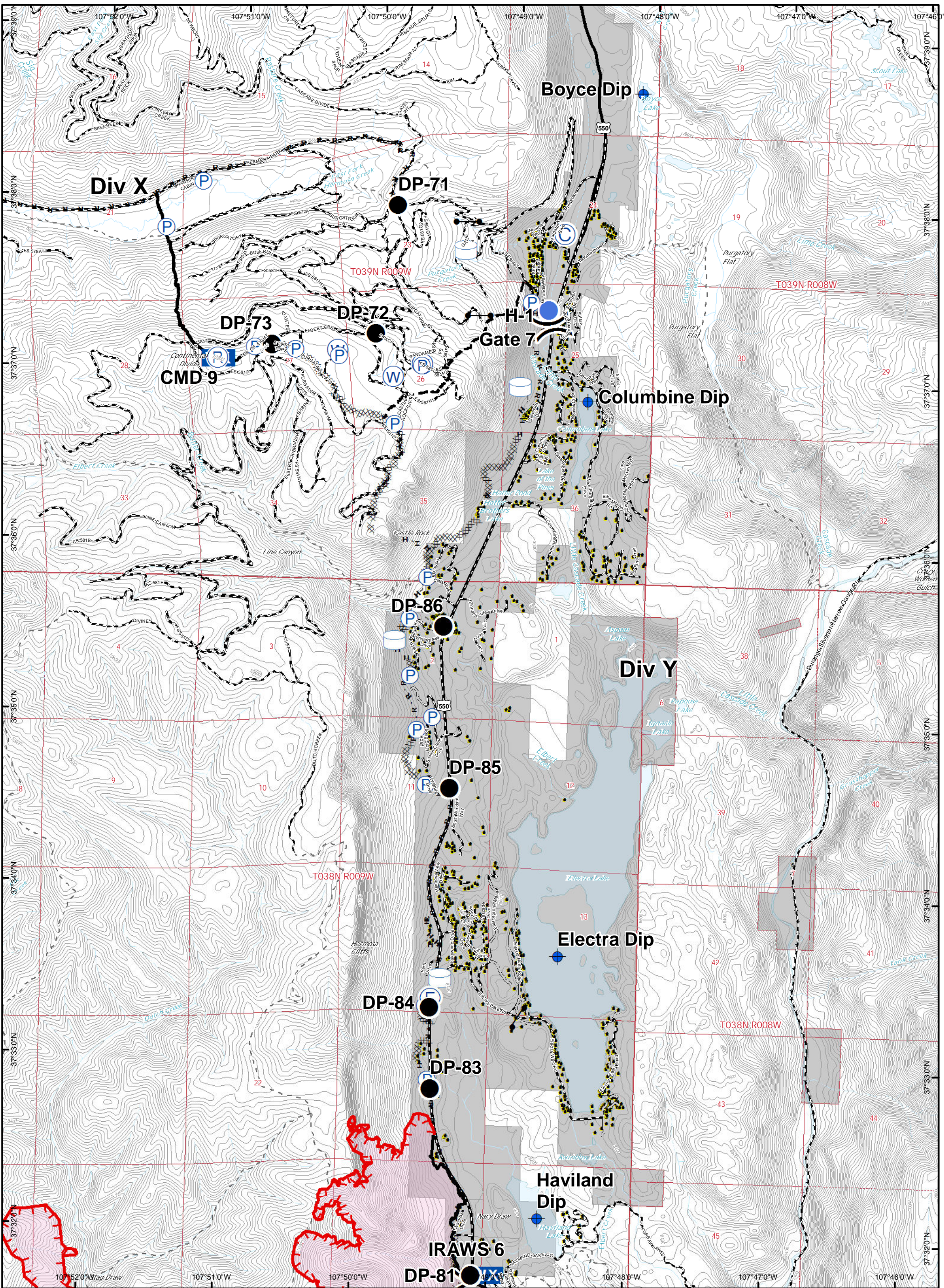


IR Perimeter Data  
 416 Fire - 34,184 Acres  
 6/21/2018 @ 0116 hrs

**416 Fire - CO-SJF-416**  
**IAP - 6/22/18**  
 Page 1



Datum: NAD 83  
 GISS - TS - 6/21/18



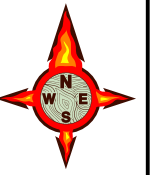
Camp	Drop Point	Gate	Mobile Weather Unit	Repeater	Water Tank	Uncontrolled Fire Edge	Completed Dozer Line	R - R Road as Completed Line
Dip Site	Fire Station	Helispot	Pump	Water Source	Division Break	Completed Line	H - H Completed Hand Line	Access Road
						Planned Fire Line	Wildfire Daily Fire Perimeter	



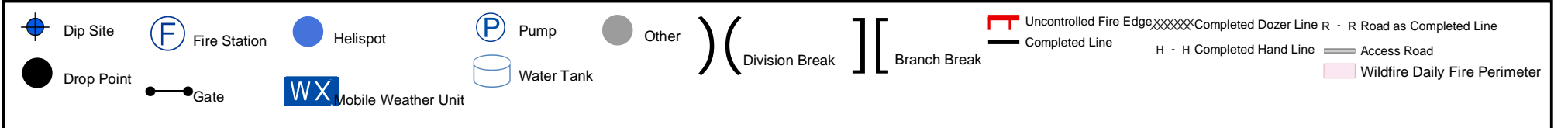
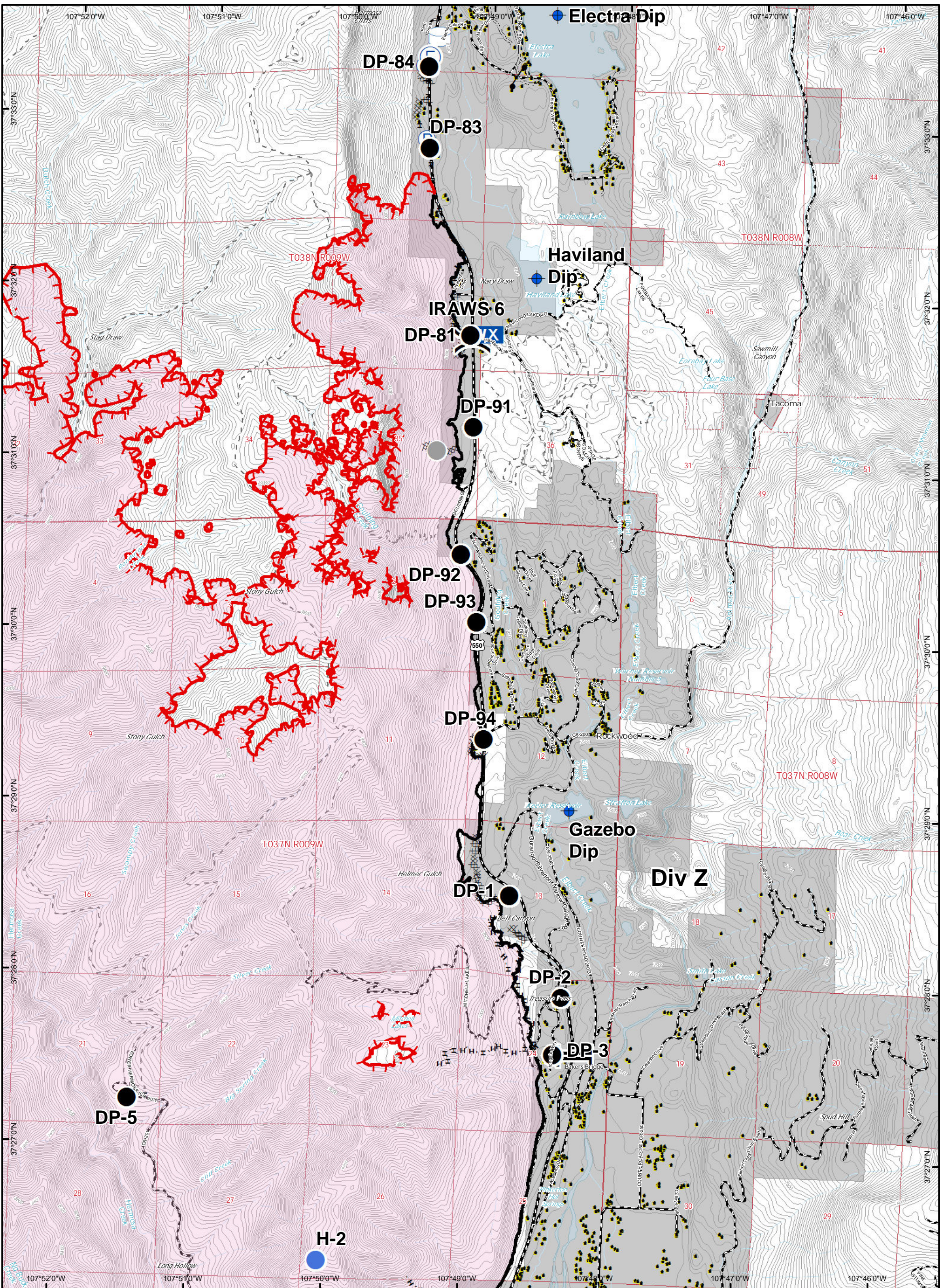
IR Perimeter Data  
 416 Fire - 34,184 Acres  
 6/21/2018 @ 0116 hrs

**416 Fire - CO-SJF-416**  
**IAP - 6/22/18**  
**Page 2**

0 0.5 1 Miles



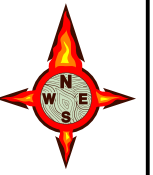
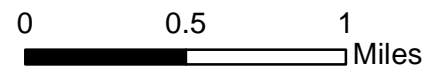
Datum: NAD 83  
 GISS - TS - 6/21/18



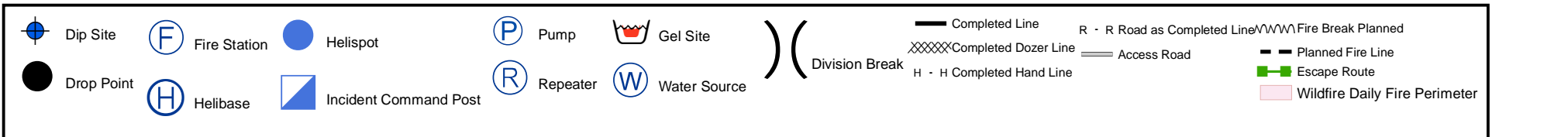
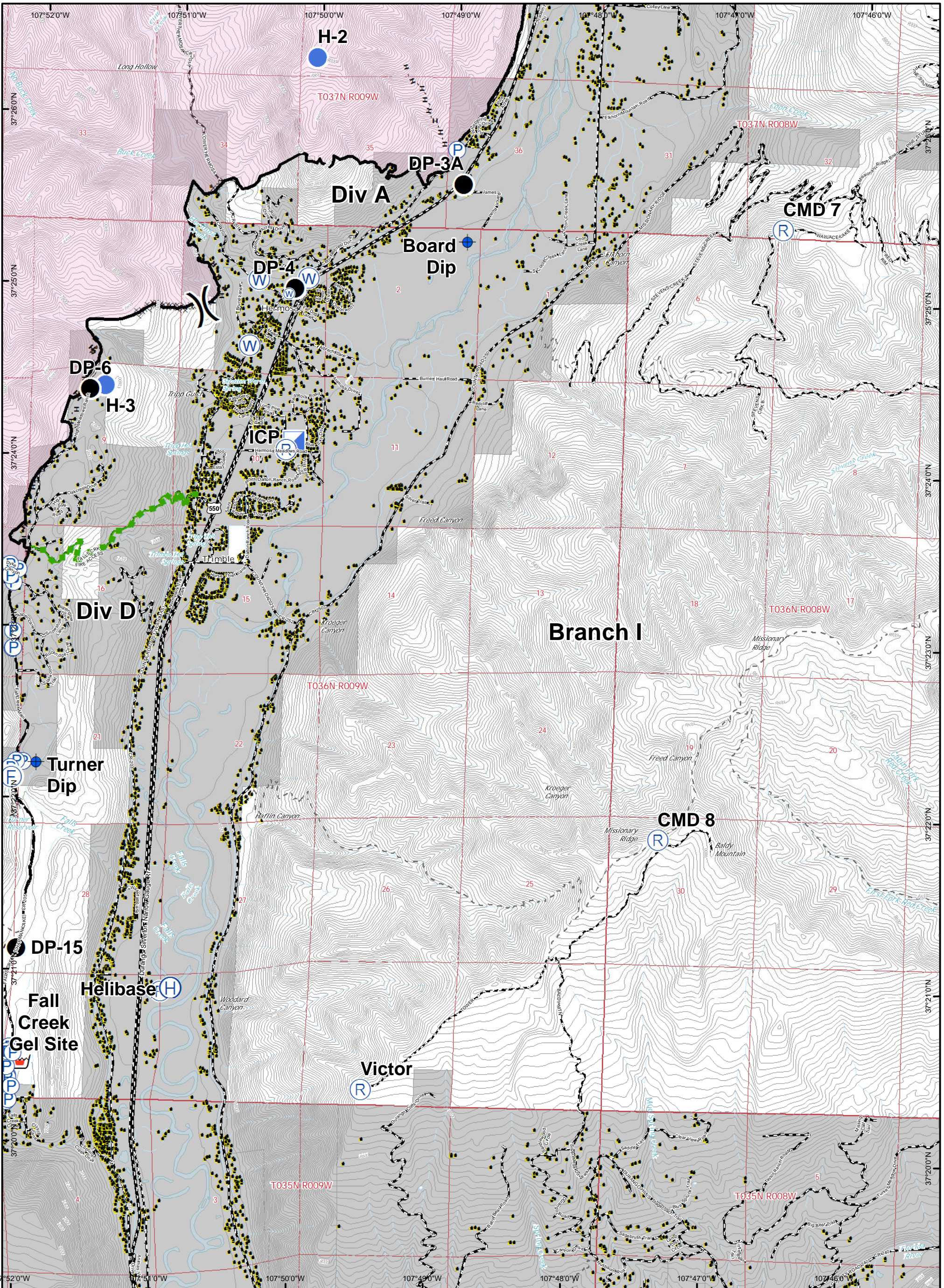


IR Perimeter Data  
 416 Fire - 34,184 Acres  
 6/21/2018 @ 0116 hrs

**416 Fire - CO-SJF-416**  
**IAP - 6/22/18**  
**Page 3**



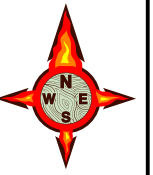
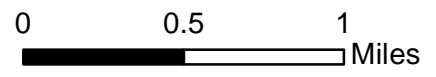
Datum: NAD 83  
 GISS - TS - 6/21/18



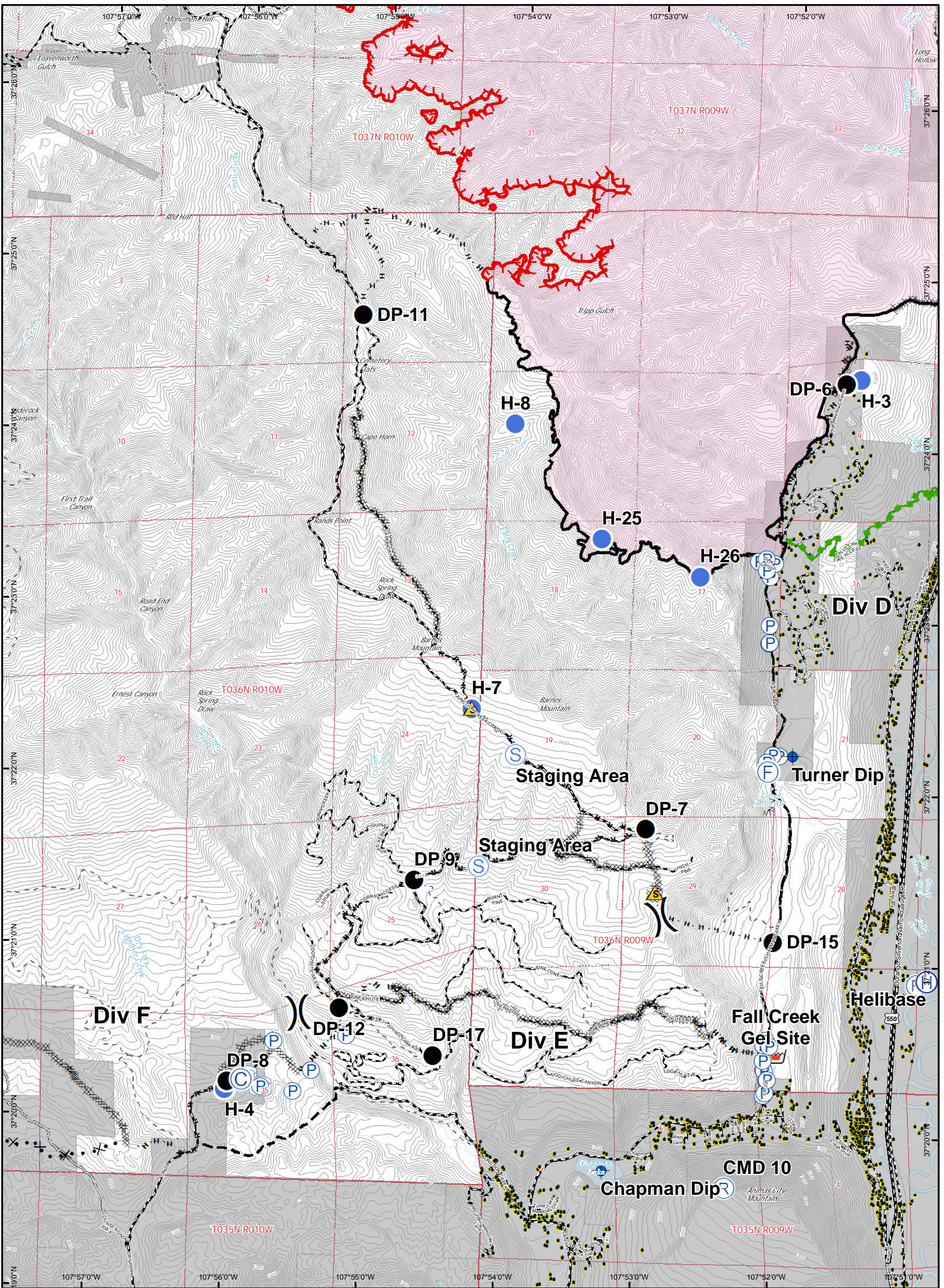


IR Perimeter Data  
 416 Fire - 34,184 Acres  
 6/21/2018 @ 0116 hrs

**416 Fire - CO-SJF-416**  
**IAP - 6/22/18**  
**Page 4**



Datum: NAD 83  
 GISS - TS - 6/21/18



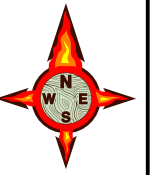
Camp	Drop Point	Helibase	Pump	Gel Site	Staging Area	Uncontrolled Fire Edge	R - R Road as Completed Line	VWV Fire Break Planned
Dip Site	Fire Station	Helispot	Repeater	Safety Zone	Water Tank	Completed Line	Access Road	Planned Fire Line
						Completed Dozer Line	Proposed Dozer Line	Escape Route
						H - H Completed Hand Line		Wildfire Daily Fire Perimeter



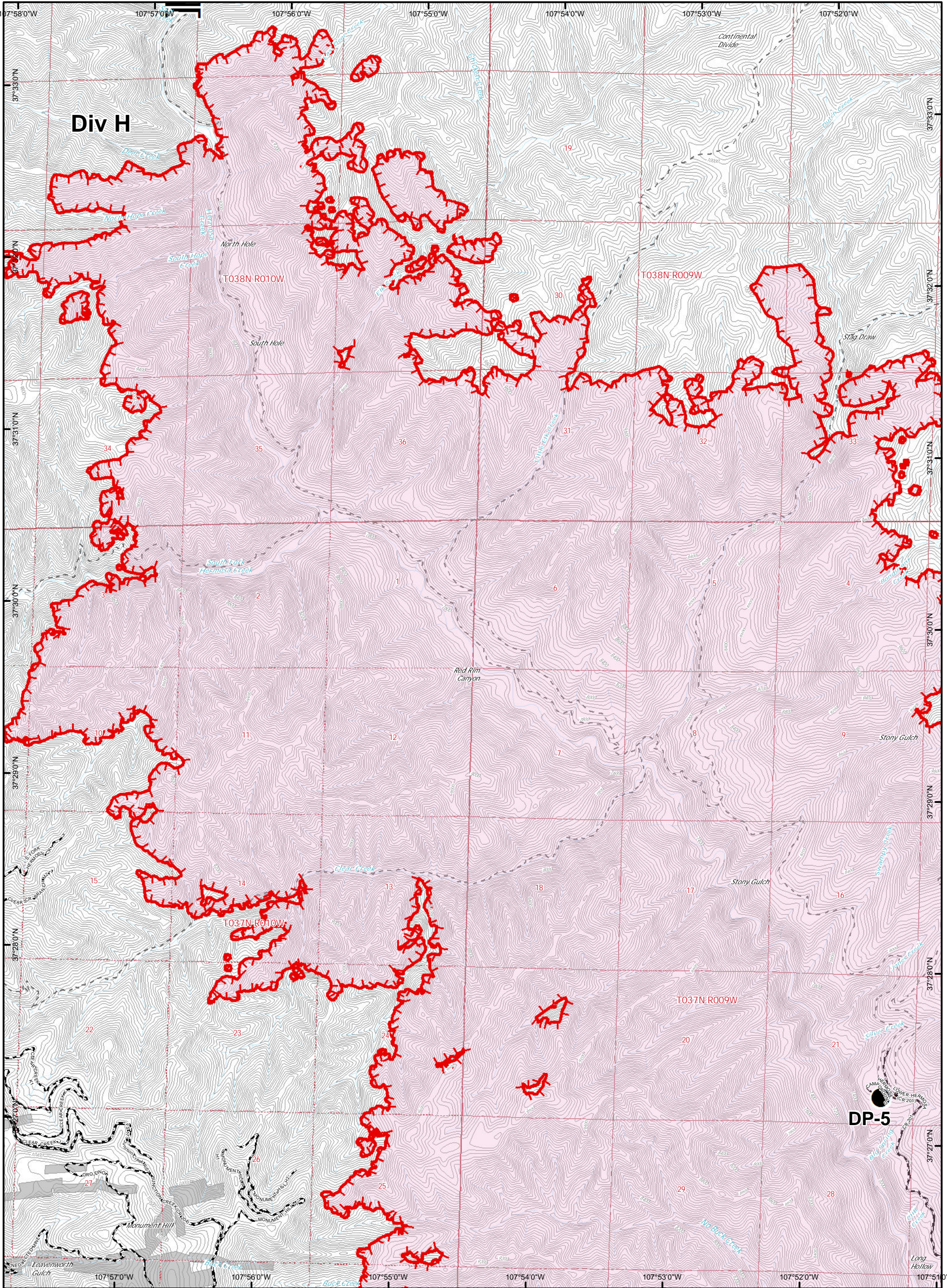
IR Perimeter Data  
 416 Fire - 34,184 Acres  
 6/21/2018 @ 0116 hrs

**416 Fire - CO-SJF-416**  
**IAP - 6/22/18**  
**Page 5**

0 0.5 1 Miles



Datum: NAD 83  
 GISS - TS - 6/21/18

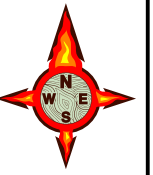
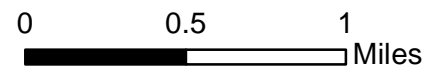


	Drop Point		Uncontrolled Fire Edge H - H Completed Hand Line		Wildfire Daily Fire Perimeter
	Branch Break				

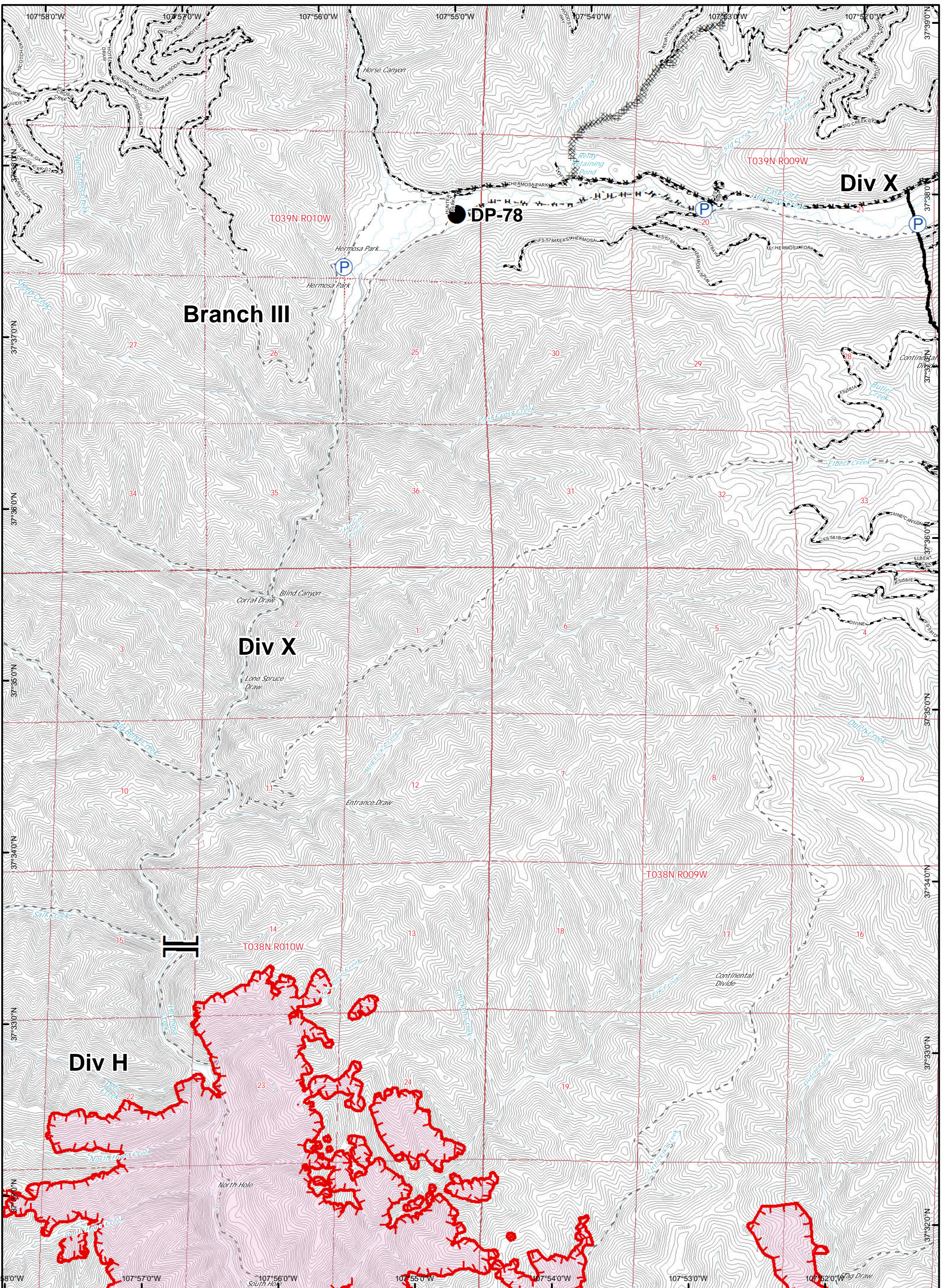


IR Perimeter Data  
 416 Fire - 34,184 Acres  
 6/21/2018 @ 0116 hrs

**416 Fire - CO-SJF-416**  
**IAP - 6/22/18**  
**Page 6**



Datum: NAD 83  
 GISS - TS - 6/21/18

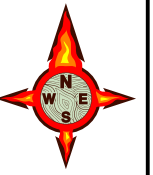
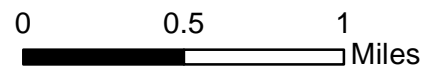


	Drop Point		Pump		Uncontrolled Fire Edge		Completed Dozer Line		R - R Road as Completed Line
	Branch Break		Completed Line		H - H Completed Hand Line		Wildfire Daily Fire Perimeter		

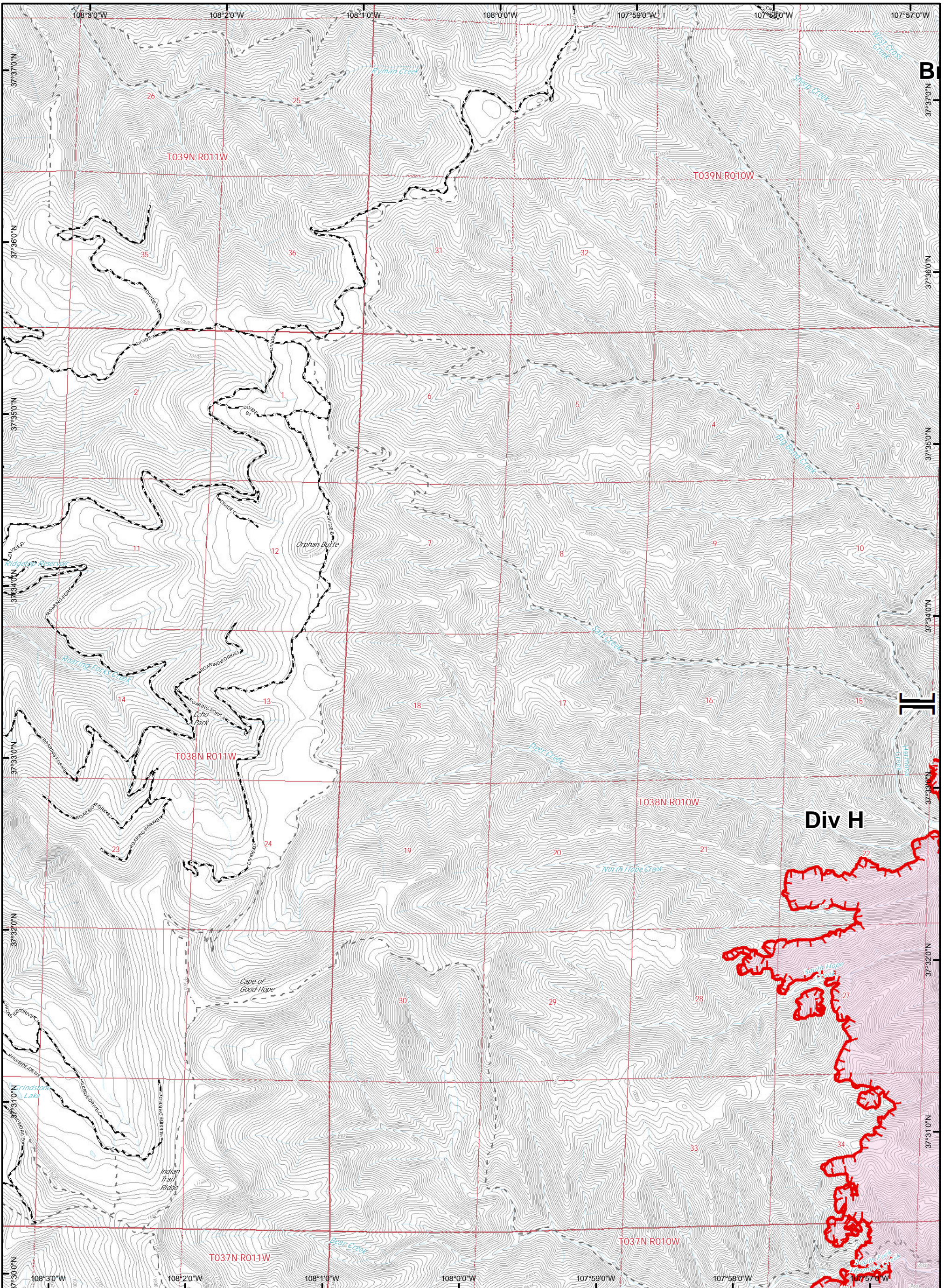


IR Perimeter Data  
 416 Fire - 34,184 Acres  
 6/21/2018 @ 0116 hrs

**416 Fire - CO-SJF-416**  
**IAP - 6/22/18**  
**Page 7**



Datum: NAD 83  
 GISS - TS - 6/21/18



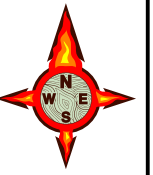
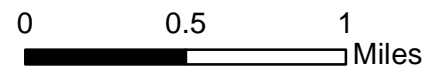
	Uncontrolled Fire Edge
	Wildfire Daily Fire Perimeter
	Branch Break



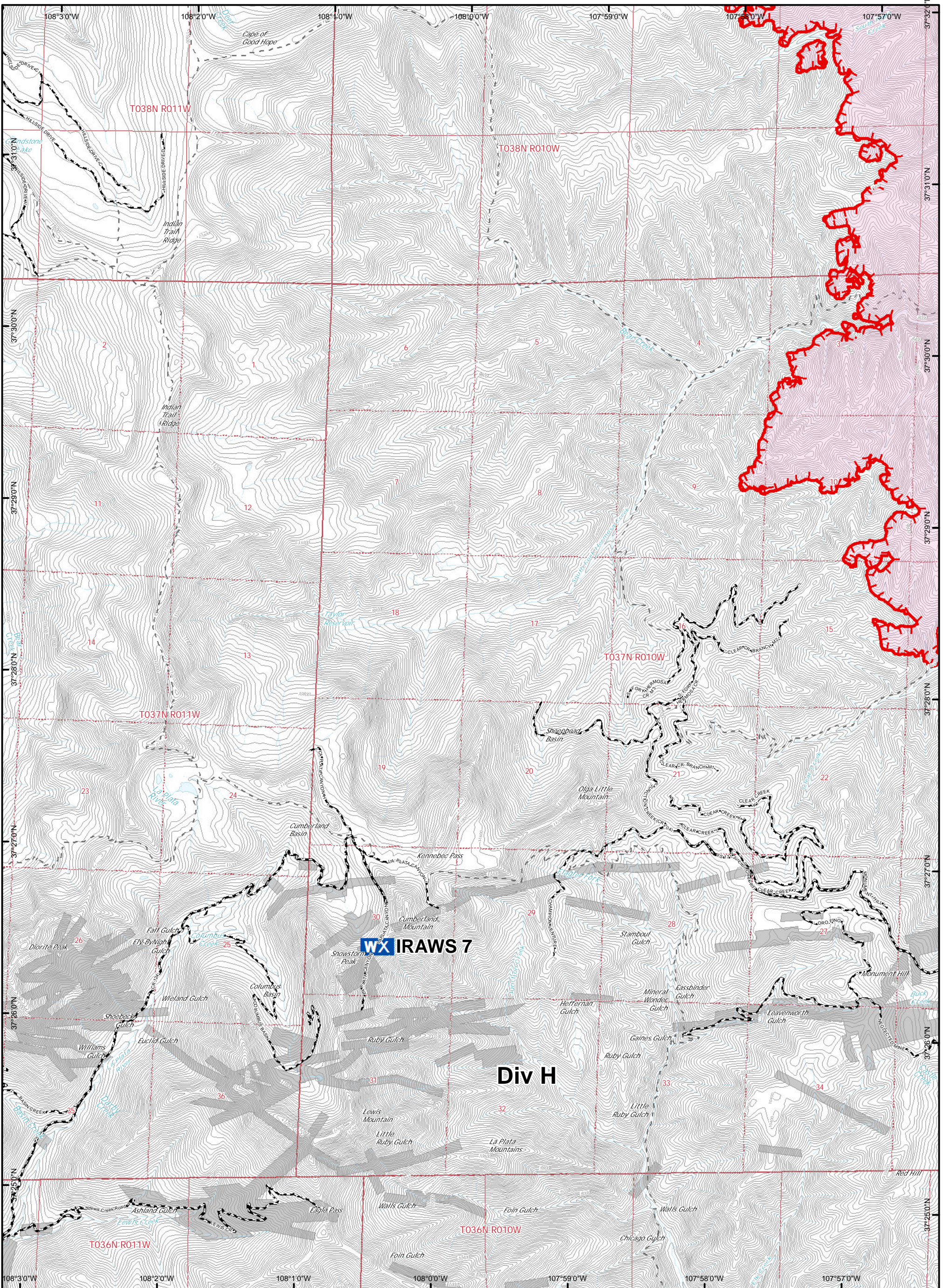


IR Perimeter Data  
 416 Fire - 34,184 Acres  
 6/21/2018 @ 0116 hrs

**416 Fire - CO-SJF-416**  
**IAP - 6/22/18**  
**Page 8**



Datum: NAD 83  
 GISS - TS - 6/21/18



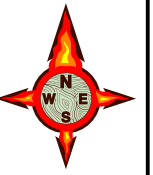
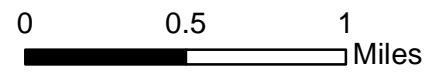
**WX** Mobile Weather Unit

Uncontrolled Fire Edge  
 Wildfire Daily Fire Perimeter

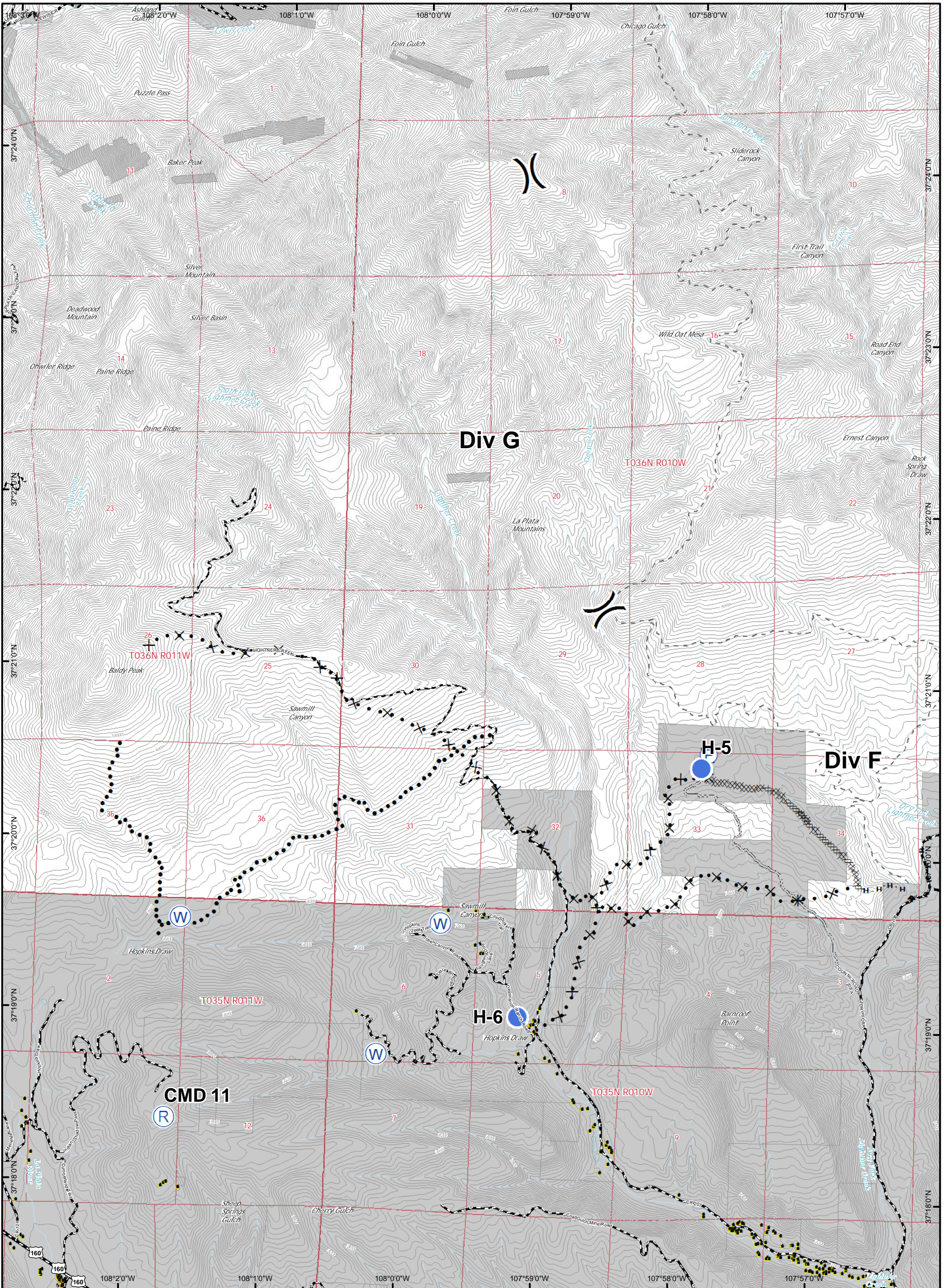


IR Perimeter Data  
 416 Fire - 34,184 Acres  
 6/21/2018 @ 0116 hrs

**416 Fire - CO-SJF-416**  
**IAP - 6/22/18**  
**Page 9**



Datum: NAD 83  
 GISS - TS - 6/21/18



Helispot	Pump	Repeater	Water Source	Division Break	Completed Dozer Line	R - R Road as Completed Line	Proposed Dozer Line
					H - H Completed Hand Line	Access Road	Planned Fire Line
							Planned Secondary Line

# 416 FIRE CO-SJF-416 Transportation Map 6/22/18

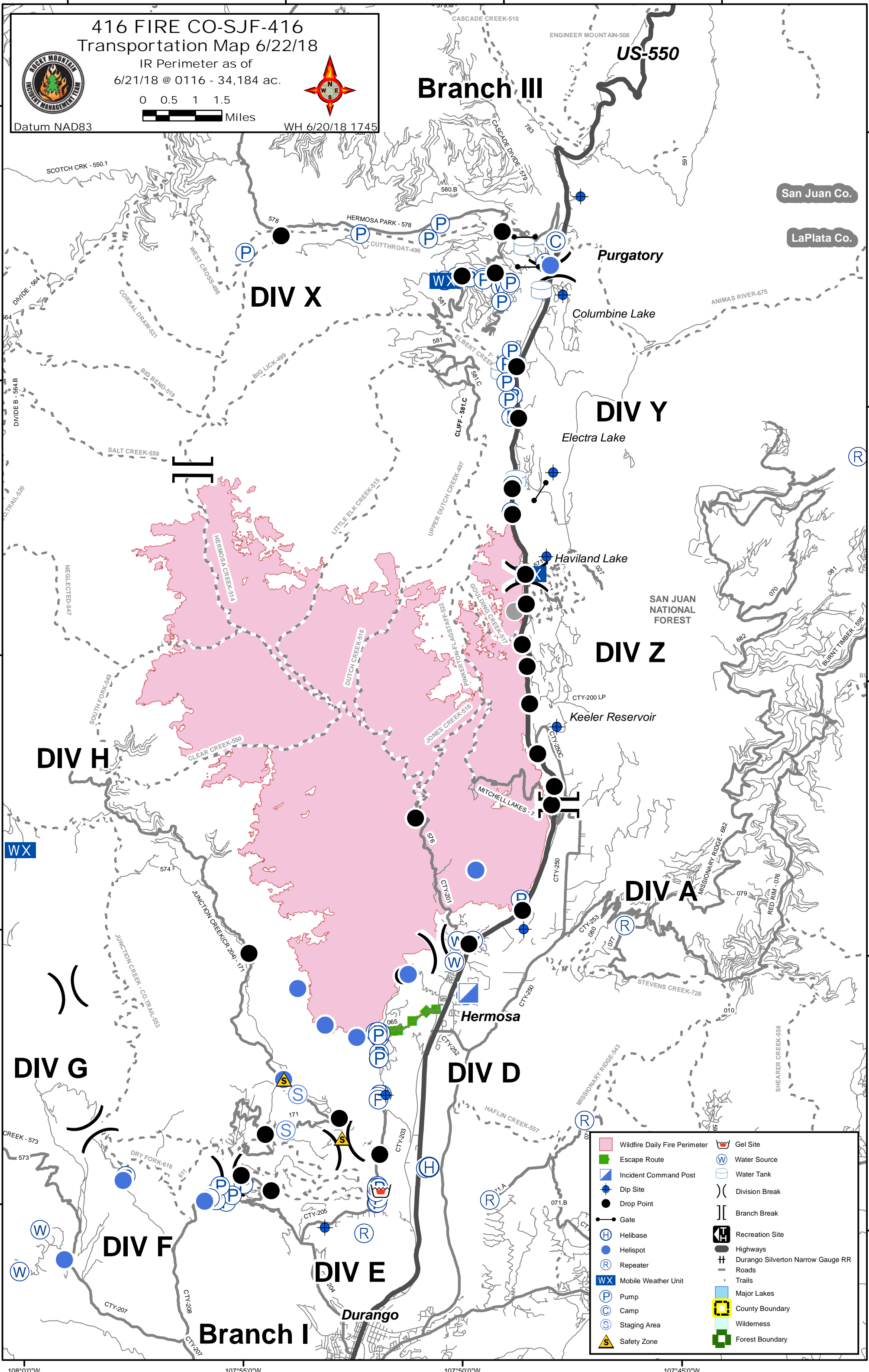
IR Perimeter as of  
6/21/18 @ 0116 - 34,184 ac.

0 0.5 1 1.5  
Miles

WH 6/20/18 1745



Datum NAD83



San Juan Co.

LaPlata Co.

SAN JUAN NATIONAL FOREST

	Wildfire Daily Fire Perimeter		Gel Site
	Escape Route		Water Source
	Incident Command Post		Water Tank
	Dip Site		Division Break
	Drop Point		Branch Break
	Gate		Recreation Site
	Helibase		Highways
	Helispot		Durango Silverton Narrow Gauge RR
	Repeater		Roads
	Mobile Weather Unit		Trails
	Pump		Major Lakes
	Camp		County Boundary
	Staging Area		Wilderness
	Safety Zone		Forest Boundary