

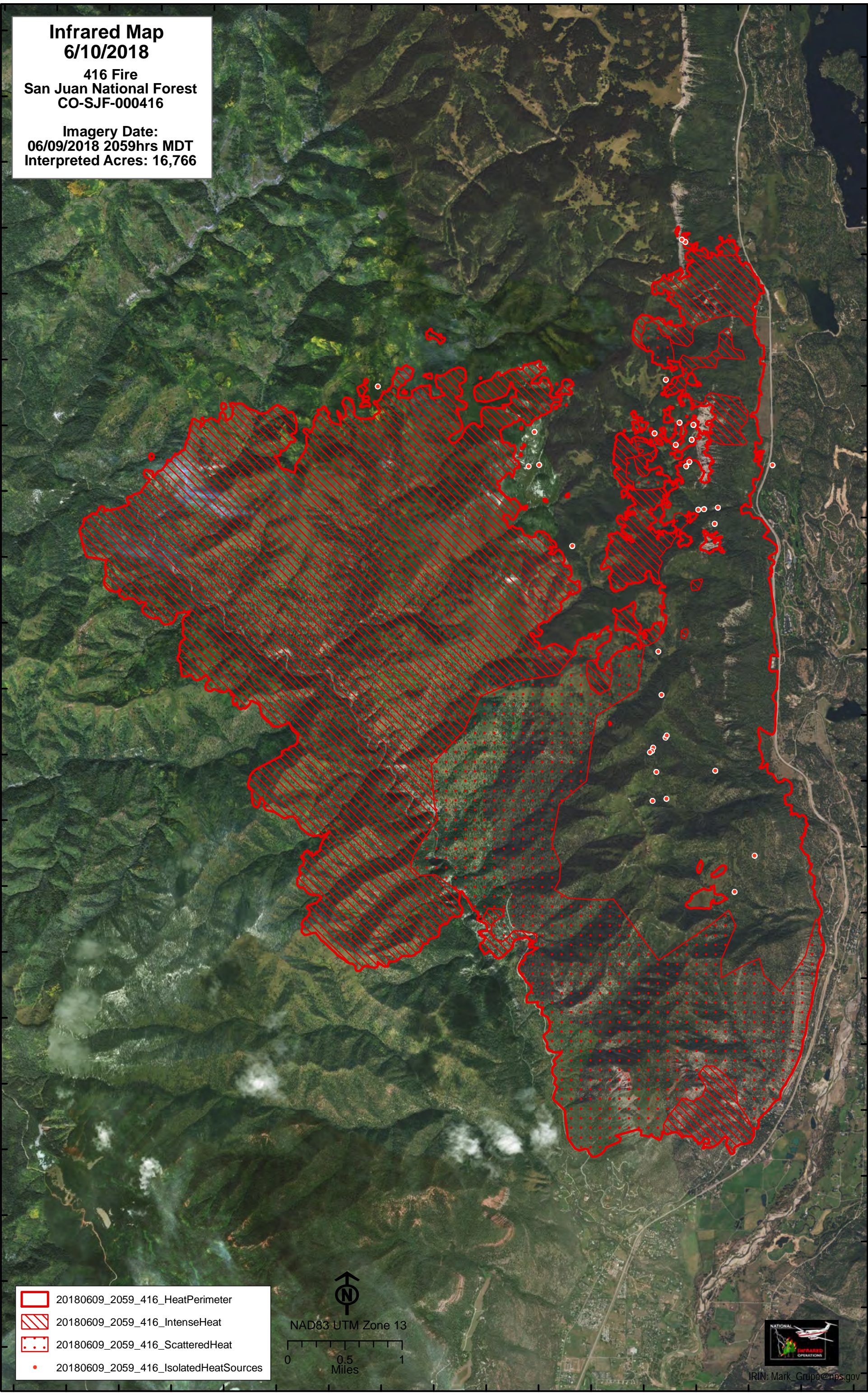
107°56.5'W 107°56'W 107°55.5'W 107°55'W 107°54.5'W 107°54'W 107°53.5'W 107°53'W 107°52.5'W 107°52'W 107°51.5'W 107°51'W 107°50.5'W 107°50'W 107°49.5'W 107°49'W 107°48.5'W

37°34'N
37°33.5'N
37°33'N
37°32.5'N
37°32'N
37°31.5'N
37°31'N
37°30.5'N
37°30'N
37°29.5'N
37°29'N
37°28.5'N
37°28'N
37°27.5'N
37°26'N
37°26.5'N
37°26'N
37°25.5'N
37°25'N
37°24.5'N
37°23'N



37°34'N
37°33.5'N
37°33'N
37°32.5'N
37°32'N
37°31.5'N
37°31'N
37°30.5'N
37°30'N
37°29.5'N
37°29'N
37°28.5'N
37°28'N
37°27.5'N
37°26'N
37°26.5'N
37°26'N
37°25.5'N
37°25'N
37°24.5'N
37°23'N

Infrared Map
6/10/2018
416 Fire
San Juan National Forest
CO-SJF-000416

Imagery Date:
06/09/2018 2059hrs MDT
Interpreted Acres: 16,766



-  20180609_2059_416_HeatPerimeter
-  20180609_2059_416_IntenseHeat
-  20180609_2059_416_ScatteredHeat
-  20180609_2059_416_IsolatedHeatSources


 NAD83 UTM Zone 13

 0 0.5 1
 Miles



IRIN: Mark_Grupe@nps.gov

107°56'W 107°55.5'W 107°55'W 107°54.5'W 107°54'W 107°53.5'W 107°53'W 107°52.5'W 107°52'W 107°51.5'W 107°51'W 107°50.5'W 107°50'W 107°49.5'W 107°49'W 107°48.5'W 107°48'W