

Badger Creek Fire IAP Map

2018-WYMRP-18138
 June 18, 2018
 Day Shift
 Approx 20,090 acres as of
 6/17/2018 at 1730 hrs
 Datum: NAD83

Wyoming Infrared Observatory

Camp

Drop Point

Helispot

Mobile Weather Unit

Repeater

Division Break

STAY ON MAIN ROAD

Completed Dozer Line

Uncontrolled Fire Edge

Completed Line

Completed Hand Line

Residential Address

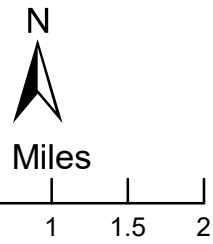
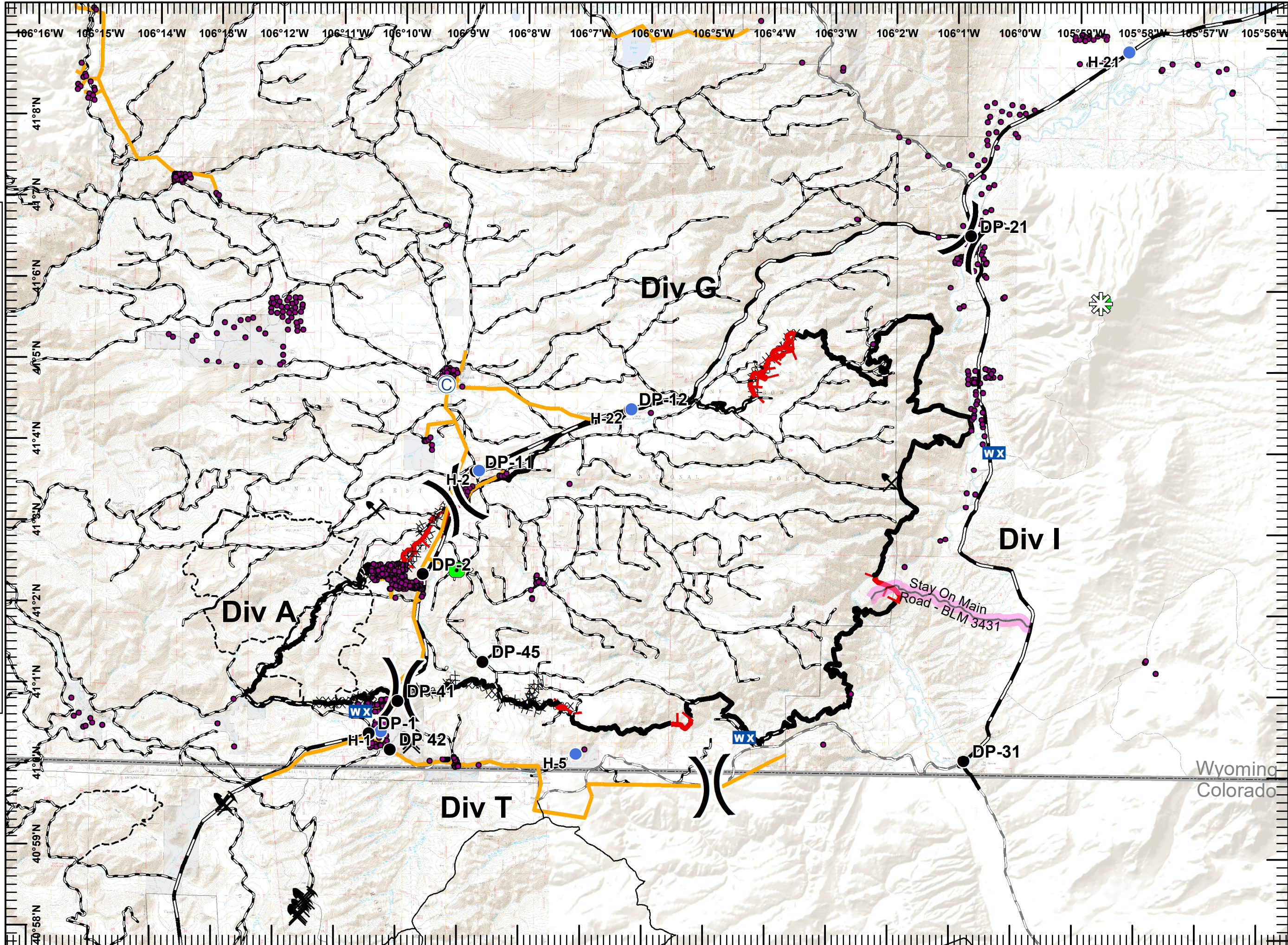
Electronic Site

Carbon Power Light Above Grd

Mine shaft

Roads -

- Highway
- County Road
- Forest Road
- Private Road



Wyoming
 Colorado