

# Badger Creek Fire Situation Map

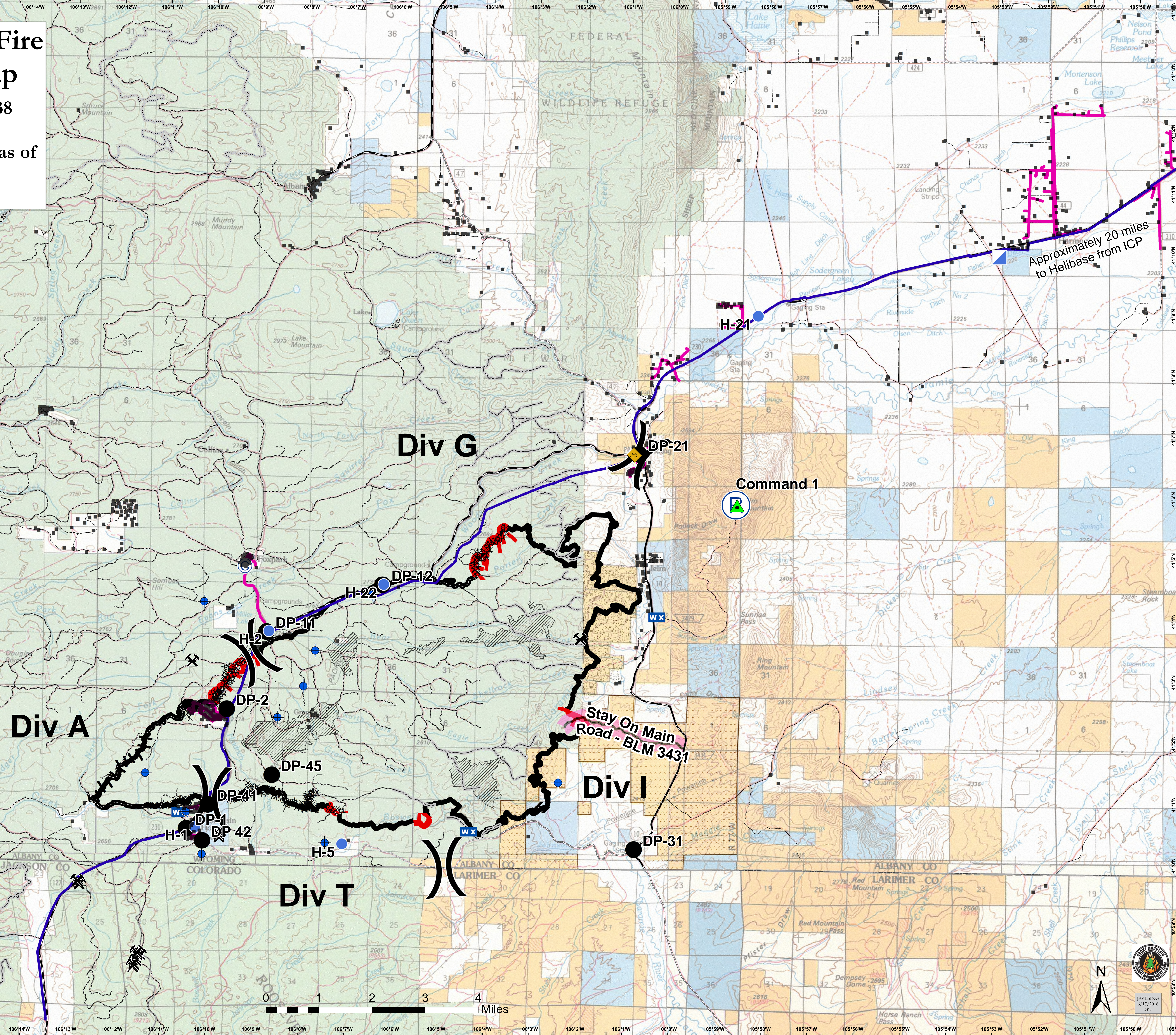
2018-WYMRF-18138

June 18, 2018

Approx. 20,090 acres as of  
6/17/2018 1730

Datum: NAD 83

- Wyoming Infrared Observatory
- Road Closure
- Mine
- Residential Address
- Albany County Major Pipelines
- Walden Gas Local Pipeline
- Stay On Main Rd
- Road Types**
  - Highway
  - County Road
  - Forest Road
  - Completed Dozer Line
  - Completed Line
  - Uncontrolled Fire Edge
  - Completed Hand Line
  - Unburned Island
  - Jelm Historic District
  - Historic Boswell Ranch
- Fox Park Spike
- Dip Site
- Drop Point
- Helispot
- Incident Command Post
- Mobile Weather Unit
- Repeater
- Division Break



Approximately 20 miles  
to Helibase from ICP

Stay On Main  
Road - BLM 3431

