

# Badger Creek Fire Situation Map

2018-WYMRF-18138

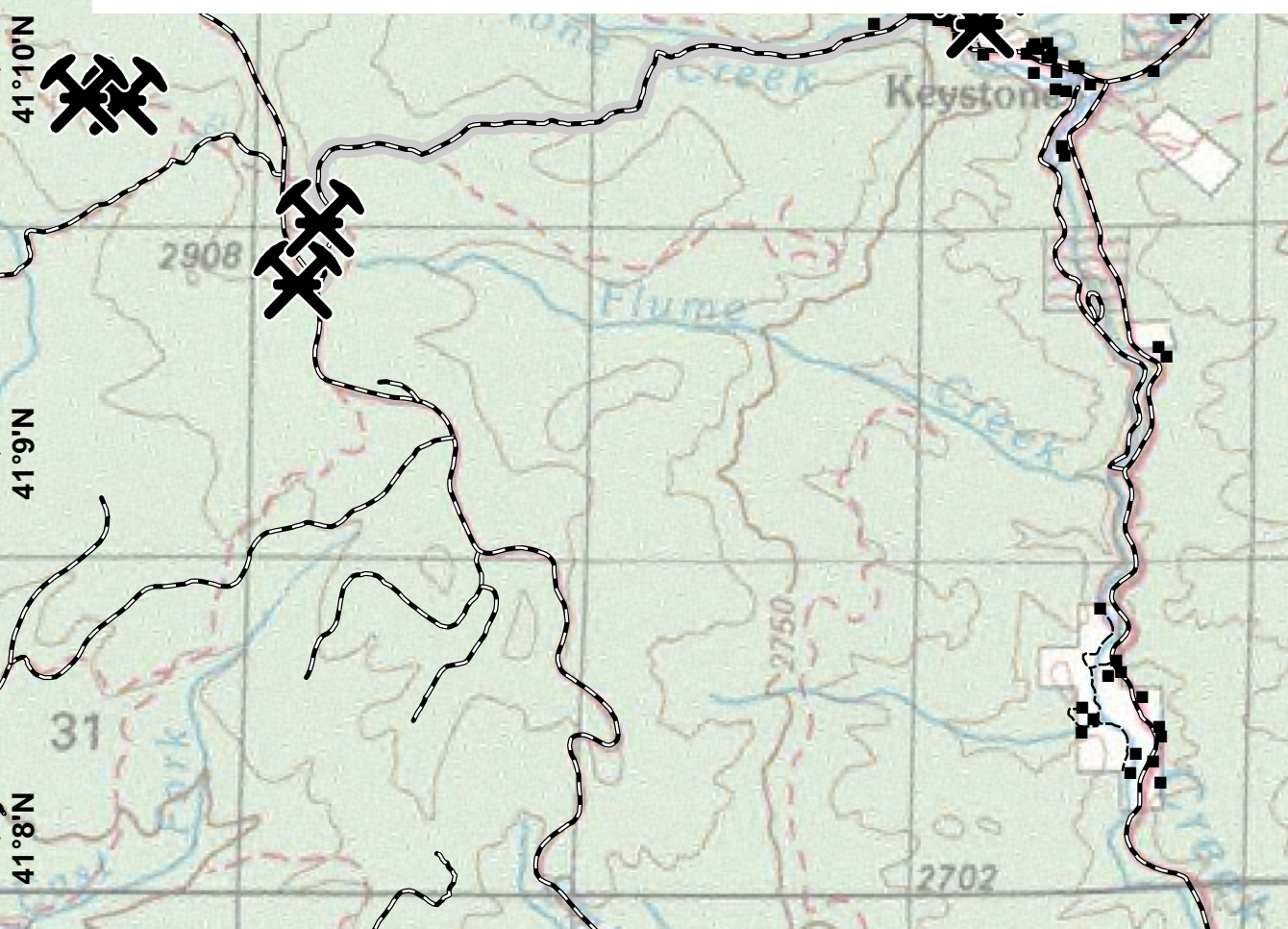
June 19, 2018

Approx. 20,090 acres as of

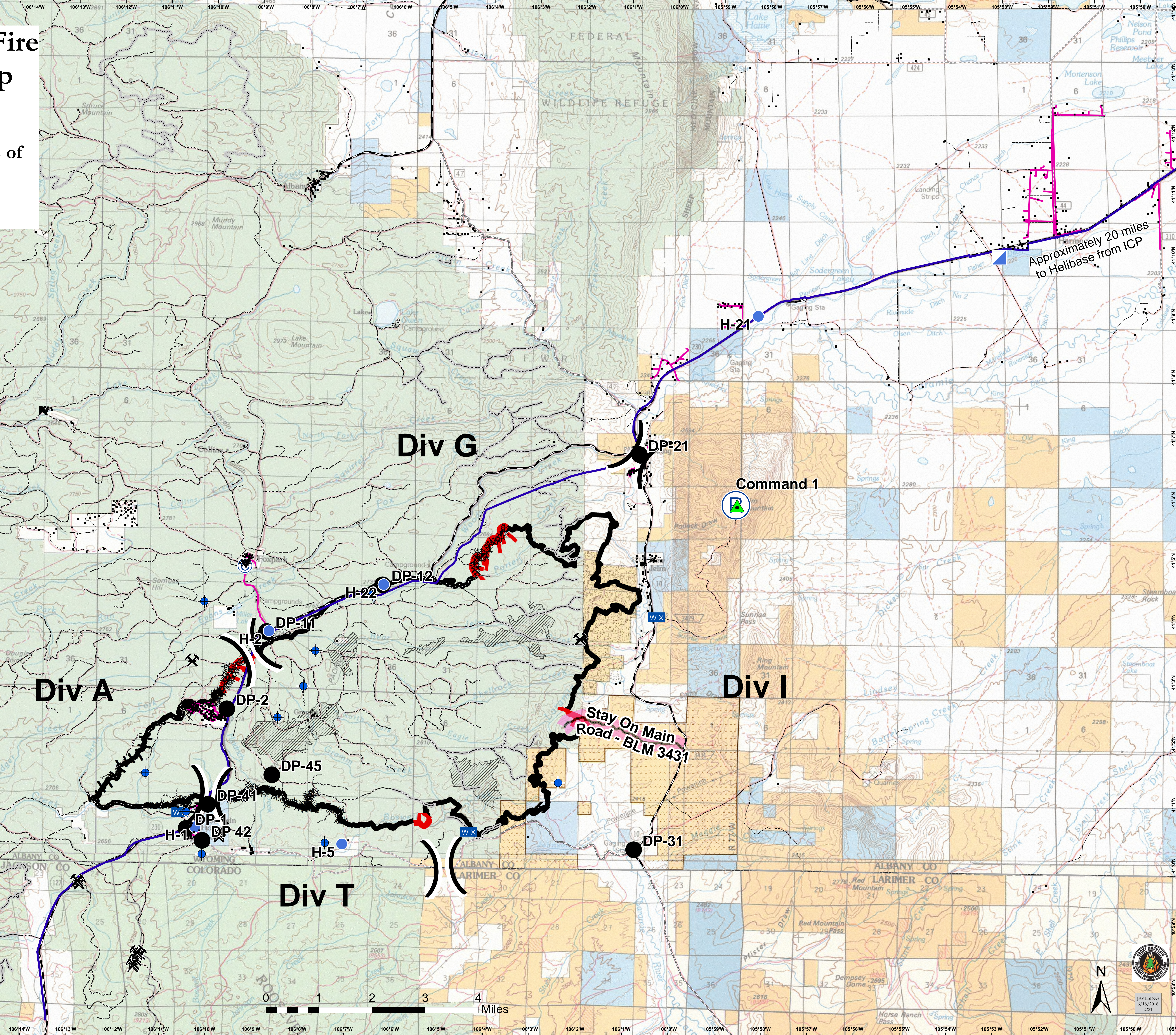
6/17/2018 1730

88% Containment

Datum: NAD 83



- Wyoming Infrared Observatory
- Mine
- Residential Address
- Albany County Major Pipelines
- Walden Gas Local Pipeline
- Stay On Main Rd
- Road Types**
- Highway
- County Road
- Forest Road
- Completed Dozer Line
- Completed Line
- Uncontrolled Fire Edge
- Completed Hand Line
- Unburned Island
- Jelm Historic District
- Historic Boswell Ranch
- Fox Park Spike
- Dip Site
- Drop Point
- Helispot
- Incident Command Post
- Mobile Weather Unit
- Repeater
- Division Break



Approximately 20 miles to Helibase from ICP

