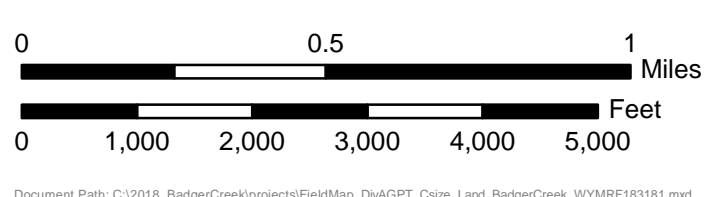
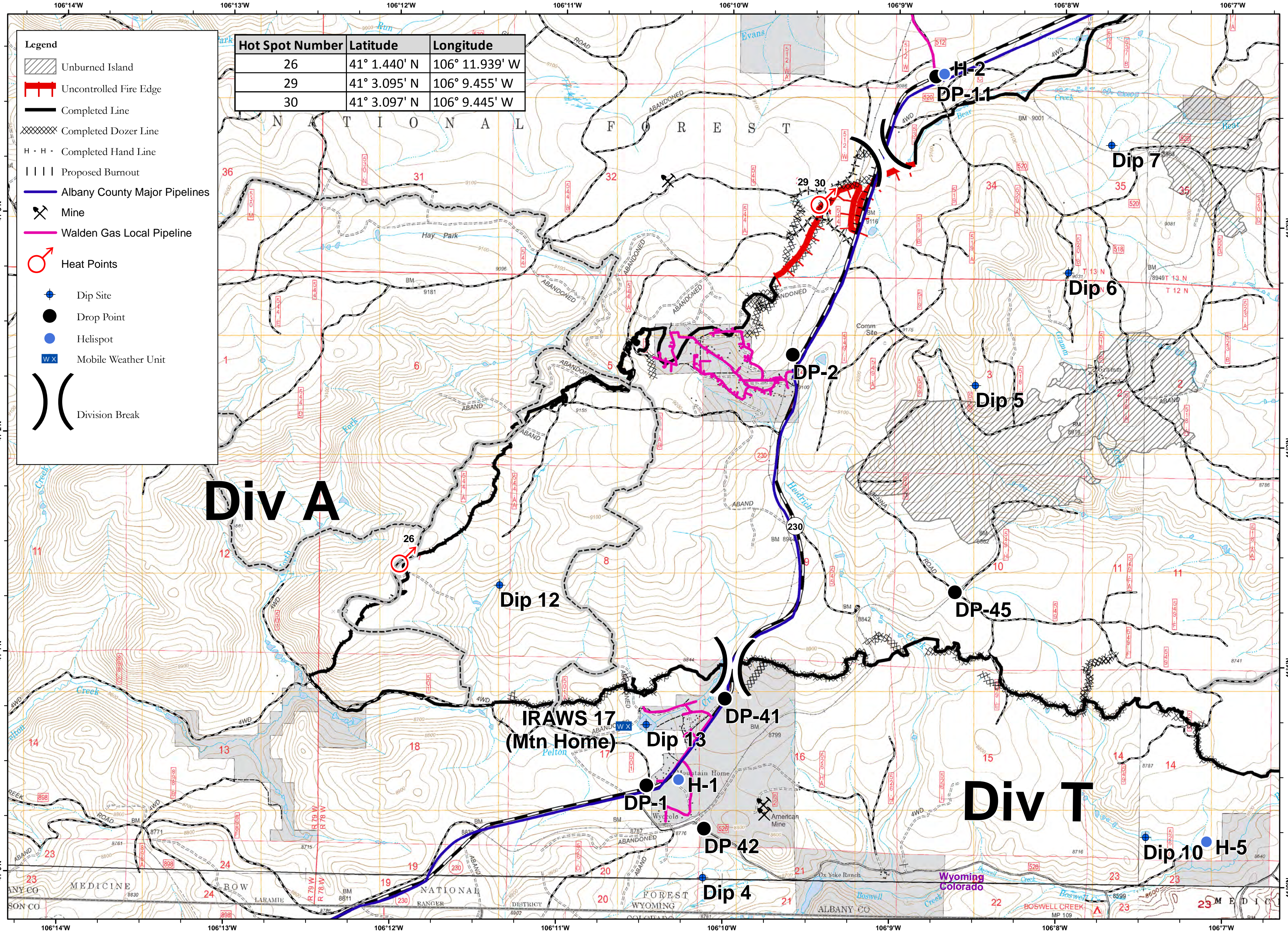


**Legend**

- Unburned Island
- Uncontrolled Fire Edge
- Completed Line
- Completed Dozer Line
- Completed Hand Line
- Proposed Burnout
- Albany County Major Pipelines
- Mine
- Walden Gas Local Pipeline
- Heat Points
- Dip Site
- Drop Point
- Helispot
- Mobile Weather Unit
- Division Break

Hot Spot Number	Latitude	Longitude
26	41° 1.440' N	106° 11.939' W
29	41° 3.095' N	106° 9.455' W
30	41° 3.097' N	106° 9.445' W



### Badger Creek Fire - 2018-WYMRF-018138 - Field Map

June 20, 2018 - Day Shift  
 Approx. 20,357 acres as of 6/19/2018 at 0800 hrs

Datum: NAD 83  
 Bonsall  
 6/19/2018 - 2242 hrs