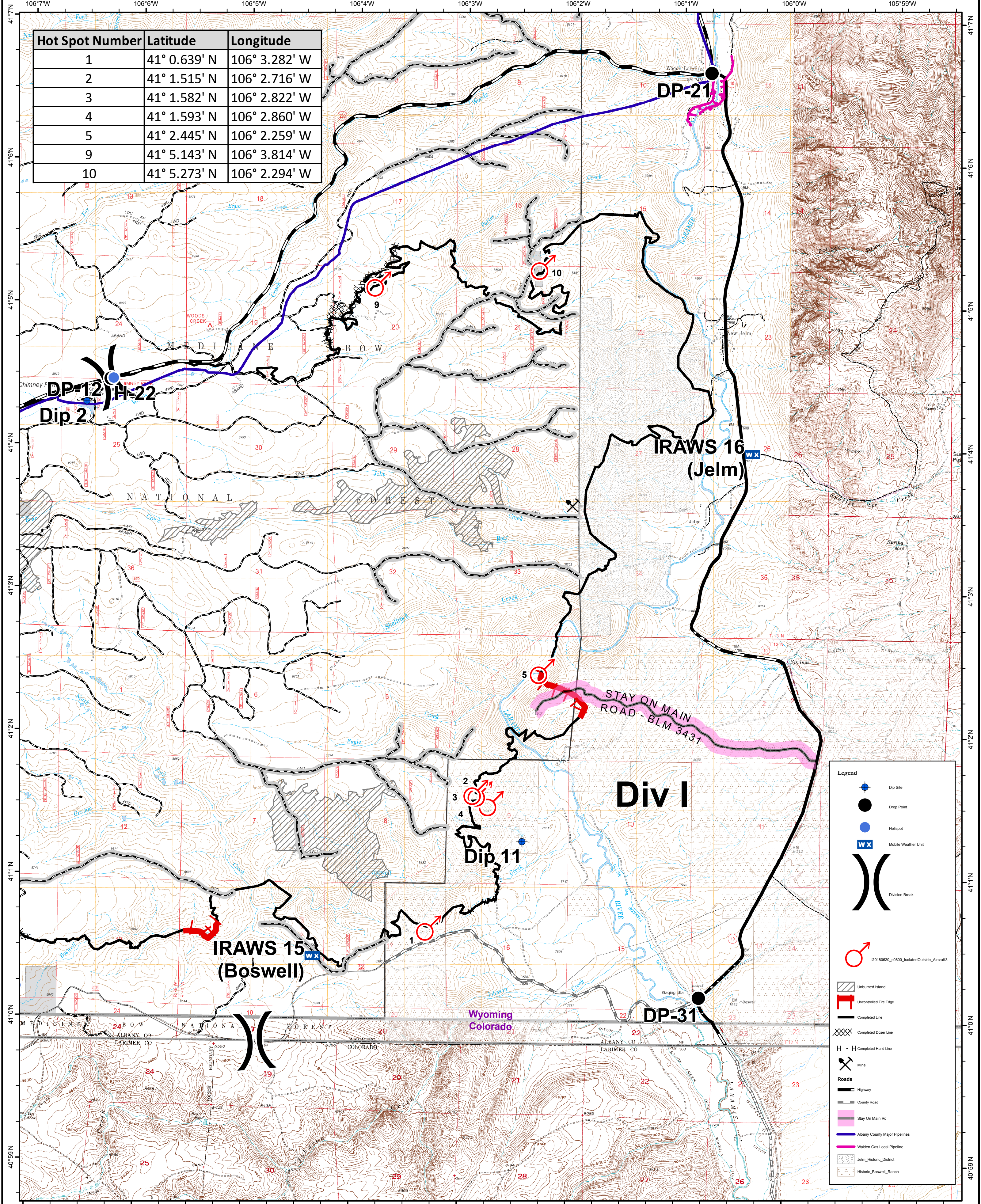
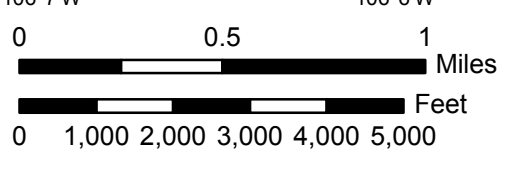


Hot Spot Number	Latitude	Longitude
1	41° 0.639' N	106° 3.282' W
2	41° 1.515' N	106° 2.716' W
3	41° 1.582' N	106° 2.822' W
4	41° 1.593' N	106° 2.860' W
5	41° 2.445' N	106° 2.259' W
9	41° 5.143' N	106° 3.814' W
10	41° 5.273' N	106° 2.294' W



**Legend**

- Dip Site
- Drop Point
- Helispot
- Mobile Weather Unit
- Division Break
- 20180620\_c0800\_IsolatedOutside\_Aircraft3
- Unburned Island
- Uncontrolled Fire Edge
- Completed Line
- Completed Dozer Line
- Completed Hand Line
- Mine
- Highway
- County Road
- Stay On Main Rd
- Albany County Major Pipelines
- Walden Gas Local Pipeline
- Jelm\_Historic\_District
- Historic\_Boswell\_Ranch



# Badger Creek Fire - 2018-WYMRP-018138 - Field Map

Effective June 21, 2018

Approx. 20,357 acres as of 6/20/2018 at 0800 hrs

Datum: NAD 83  
Bonsall  
6/20/2018 - 1818 hrs