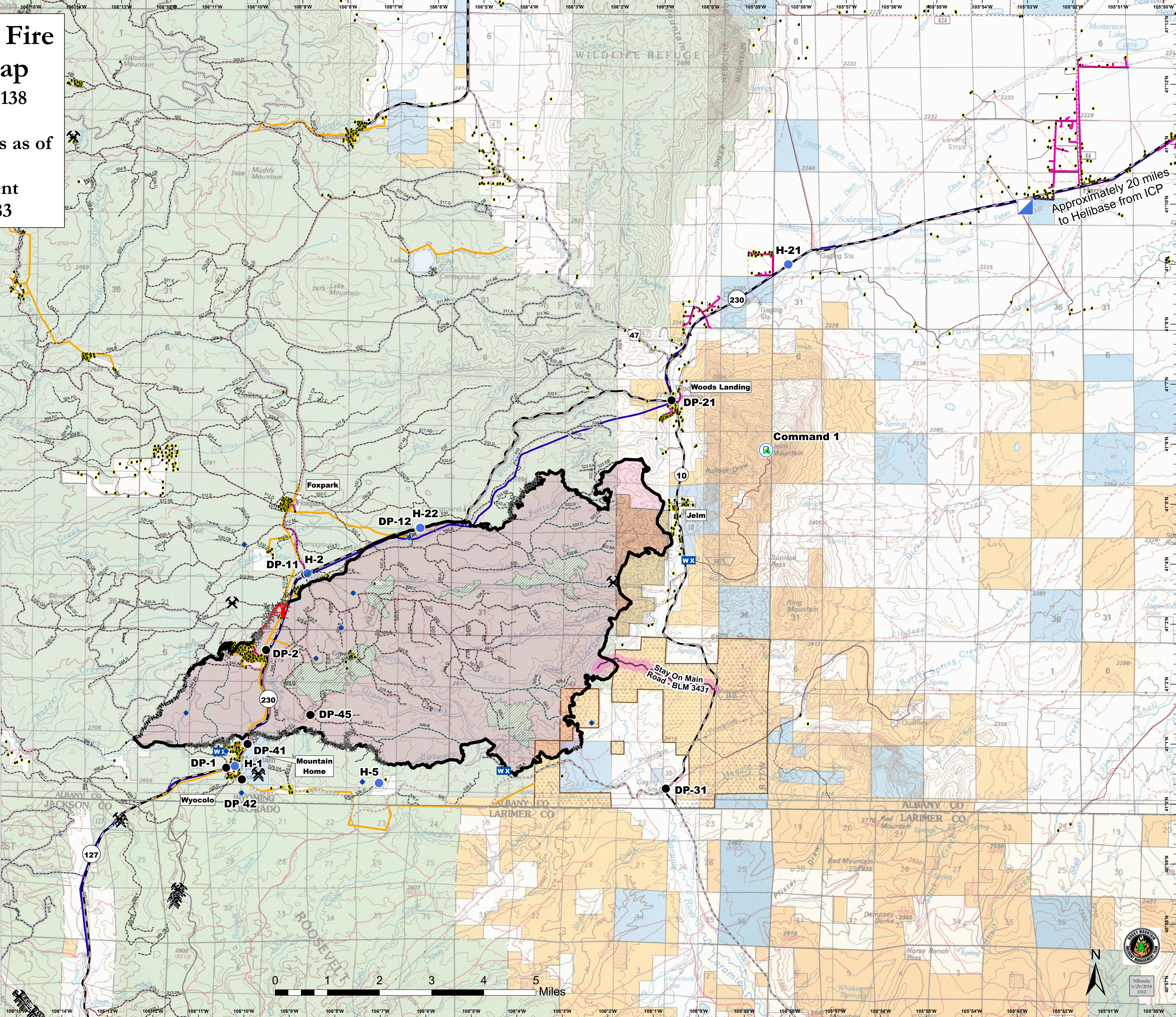


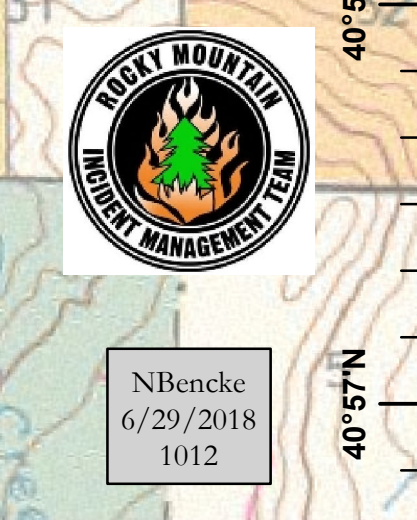
Badger Creek Fire Situation Map

2018-WYMRF-18138
 June 29, 2018
 Approx. 20,800 acres as of 6/28/1945
 80% Containment
 Datum: NAD 83

- Wyoming Infrared Observatory
- Dip Site
- Drop Point
- Helispot
- Incident Command Post
- Mobile Weather Unit
- Repeater
- Completed Hand Line
- Completed Line
- Uncontrolled Fire Edge
- Completed Dozer Line
- Proposed Burnout
- Mine
- Residential Address
- Highway
- County Road
- Forest Road
- Stay On Main Rd
- Carbon Power Light Above Grd
- Walden Gas Local Pipeline
- Albany County Major Pipelines
- Jelm Historic District
- Historic Boswell Ranch
- Wildfire Daily Fire Perimeter
- Unburned Island



Approximately 20 miles to Helibase from ICP



N
 N8endc
 6/29/2018
 1012