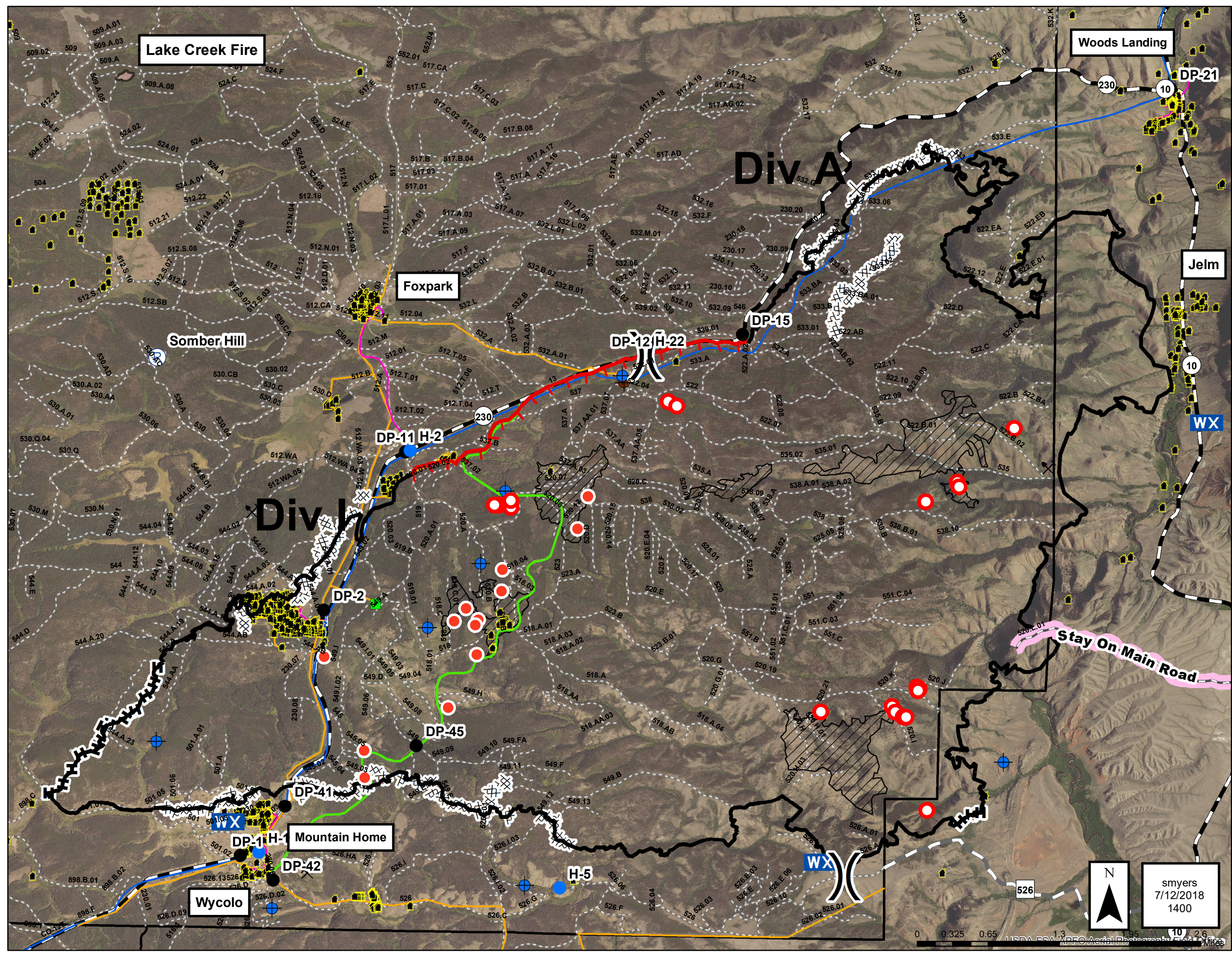


**Badger Creek Fire
IAP Map**
2018-WYMRP-18138
Effective July 13th, 2018
Approx. 21,310 acres
90% Containment
Datum: NAD 1983

- SymbolID**
- MMA 7/9 Hot Spots
 - Confirmed Hot Spots
 - Electronic Site
 - Division Break
 - Gravel Pit
 - Dip Site
 - Pump
 - Drop Point
 - Helispot
 - Incident Command Post
 - Mobile Weather Unit
 - Repeater
 - BLM 3431 - Overlook Rd
 - Completed Line
 - Uncontrolled Fire Edge
 - Completed Dozer Line
 - Completed Hand Line
 - Residential Address
 - Mine
 - Rail Trail
 - Walden Gas Local Pipeline
 - Carbon Power Light Above Ground
 - Albany County Major Pipelines
 - Unburned Islands
 - Forest
 - County
 - State
 - State Hwy
 - US Hwy



smyers
7/12/2018
1400