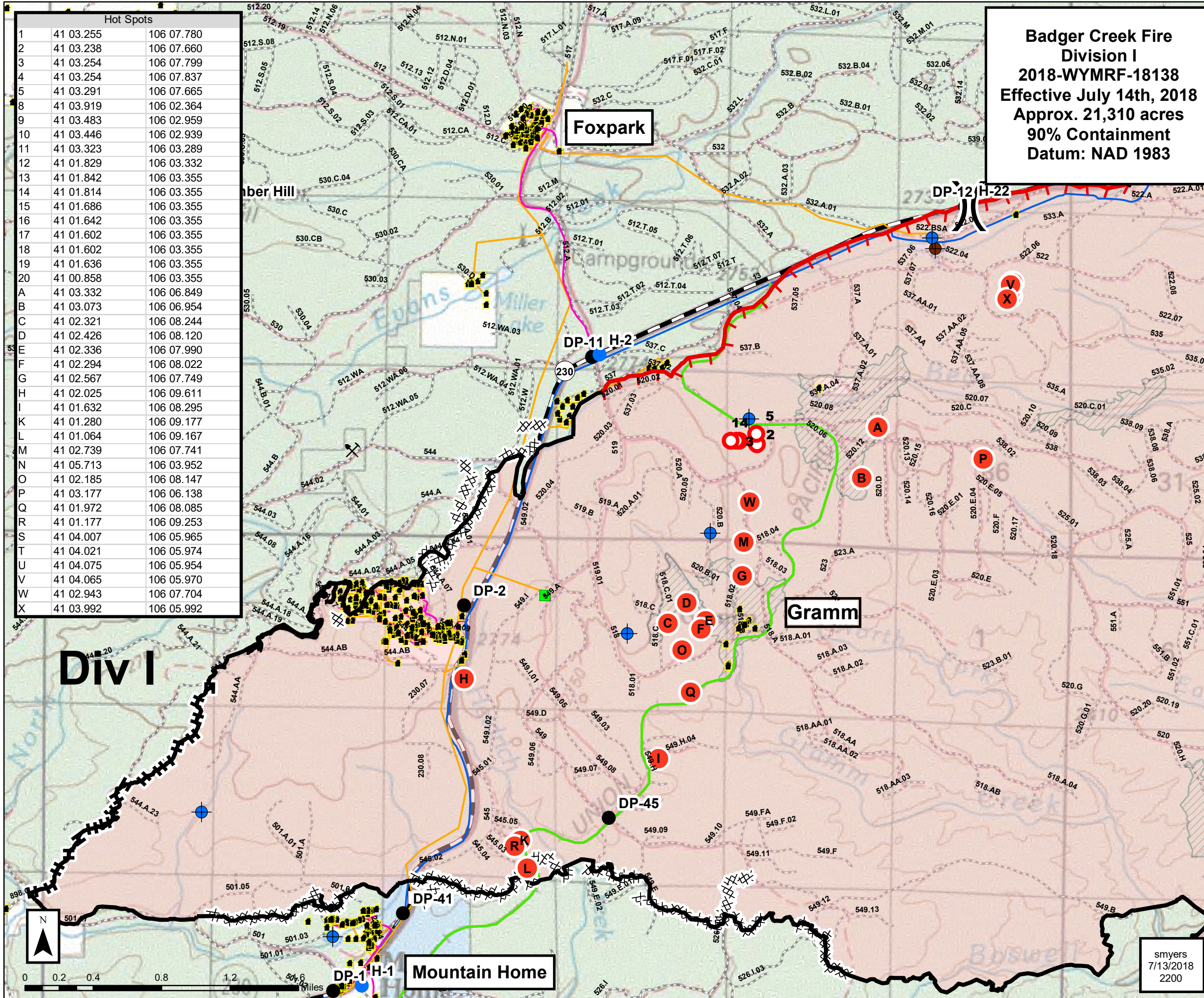
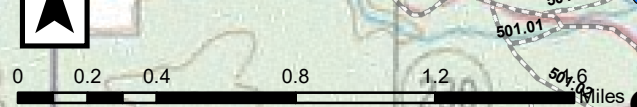


- MMA 7/9 Hot Spots
- Confirmed Hot Spots
- Electronic Site
- () Division Break
- X Gravel Pit
- Dip Site
- Pump
- Drop Point
- Helispot
- ▢ Incident Command Post
- R Repeater
- BLM 3431 - Overlook Rd
- Completed Line
- Uncontrolled Fire Edge
- Completed Dozer Line
- Completed Hand Line
- Residential Address
- X Mine
- Rail Trail
- Walden Gas Local Pipeline
- Carbon Power Light Above Ground
- Albany County Major Pipelines
- Wildfire Daily Fire Perimeter
- Unburned Island
- Forest
- County
- State
- State Hwy
- US Hwy
- Jelm Historic District
- Historic Boswell Ranch



Hot Spots		
1	41 03.255	106 07.780
2	41 03.238	106 07.660
3	41 03.254	106 07.799
4	41 03.254	106 07.837
5	41 03.291	106 07.665
8	41 03.919	106 02.364
9	41 03.483	106 02.959
10	41 03.446	106 02.939
11	41 03.323	106 03.289
12	41 01.829	106 03.332
13	41 01.842	106 03.355
14	41 01.814	106 03.355
15	41 01.686	106 03.355
16	41 01.642	106 03.355
17	41 01.602	106 03.355
18	41 01.602	106 03.355
19	41 01.636	106 03.355
20	41 00.858	106 03.355
A	41 03.332	106 06.849
B	41 03.073	106 06.954
C	41 02.321	106 08.244
D	41 02.426	106 08.120
E	41 02.336	106 07.990
F	41 02.294	106 08.022
G	41 02.567	106 07.749
H	41 02.025	106 09.611
I	41 01.632	106 08.295
K	41 01.280	106 09.177
L	41 01.064	106 09.167
M	41 02.739	106 07.741
N	41 05.713	106 03.952
O	41 02.185	106 08.147
P	41 03.177	106 06.138
Q	41 01.972	106 08.085
R	41 01.177	106 09.253
S	41 04.007	106 05.965
T	41 04.021	106 05.974
U	41 04.075	106 05.954
V	41 04.065	106 05.970
W	41 02.943	106 07.704
X	41 03.992	106 05.992

Badger Creek Fire
Division I
2018-WYMR-18138
Effective July 14th, 2018
Approx. 21,310 acres
90% Containment
Datum: NAD 1983



smyers
7/13/2018
2200