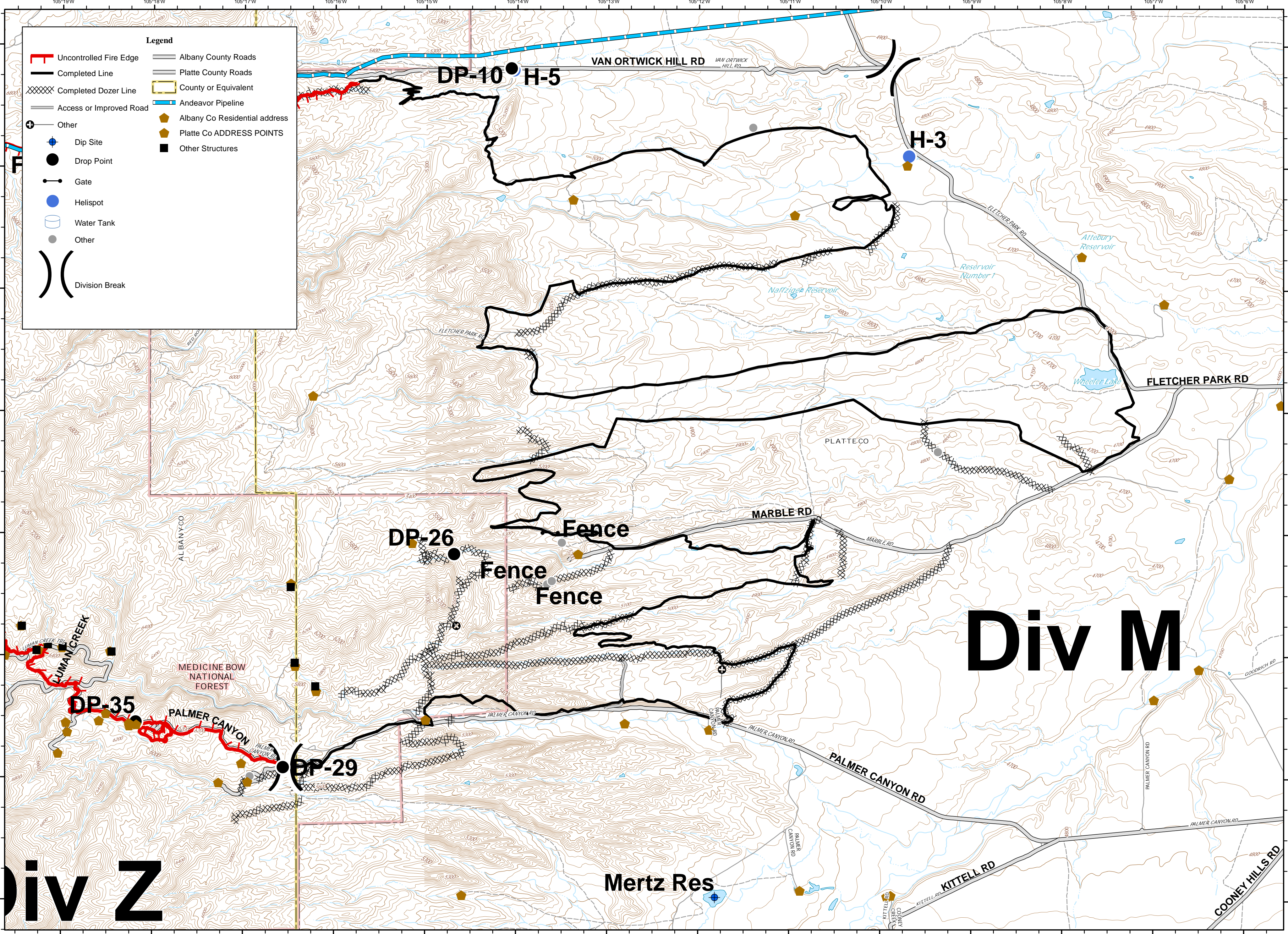


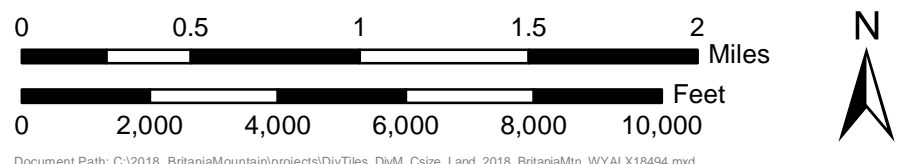
**Legend**

- Uncontrolled Fire Edge
- Completed Line
- Completed Dozer Line
- Access or Improved Road
- Other
- Dip Site
- Drop Point
- Gate
- Helispot
- Water Tank
- Other
- Division Break
- Albany County Roads
- Platte County Roads
- County or Equivalent
- Andeavor Pipeline
- Albany Co Residential address
- Platte Co ADDRESS POINTS
- Other Structures



# Div M

# Div Z



**Britania Mountain Fire - WYALX-018494 - Field Map**  
 September 2, 2018 - Day Shift  
 Approx 28,250 acres as of 9/1/18 at 0215 hrs