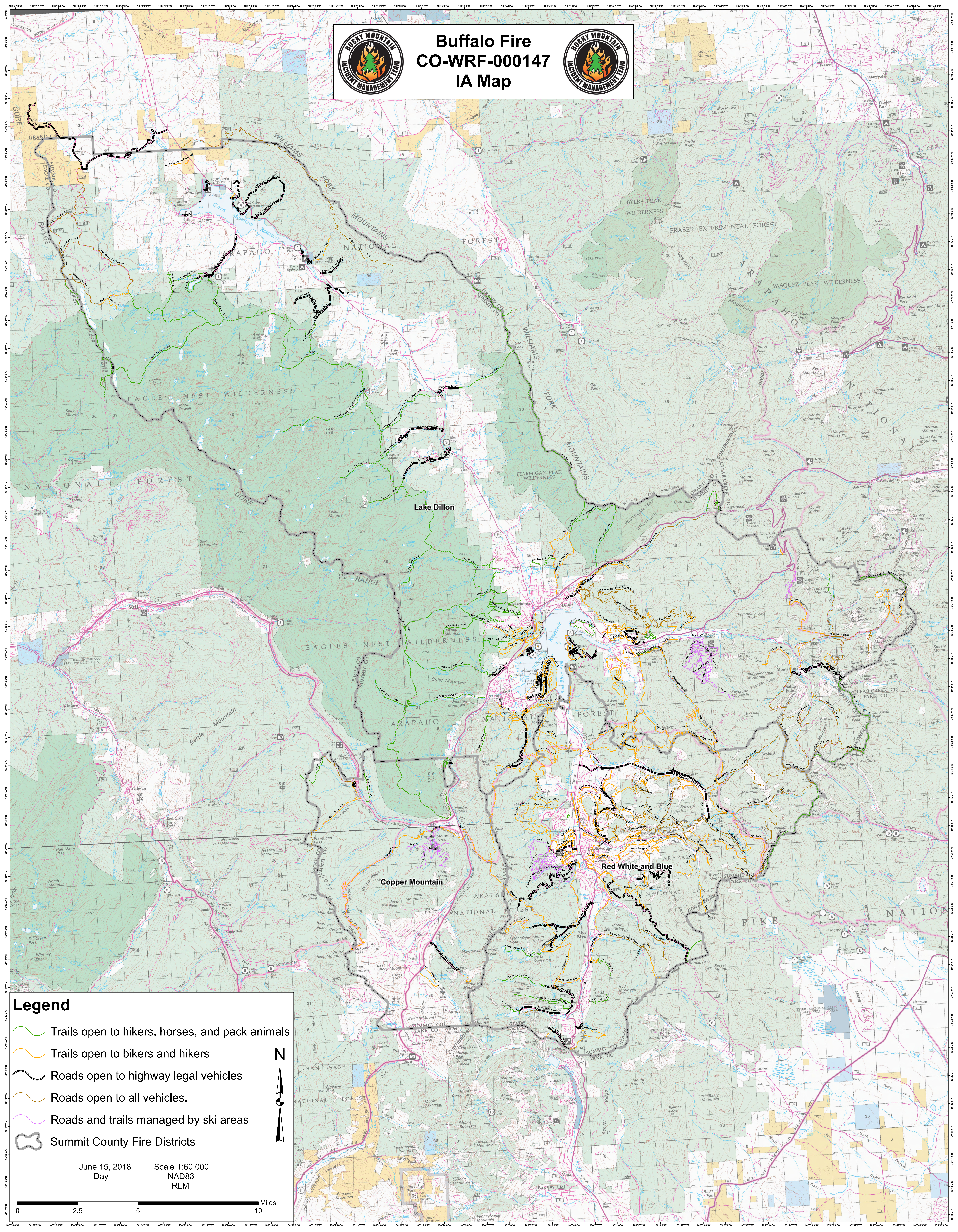
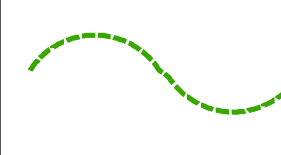
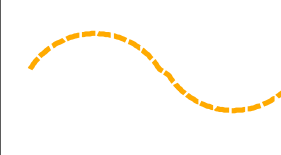
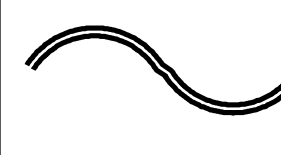
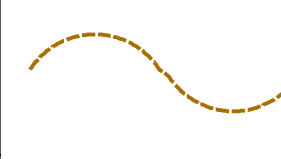
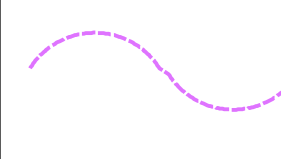
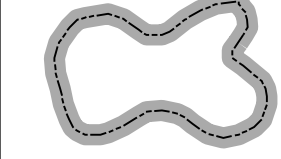


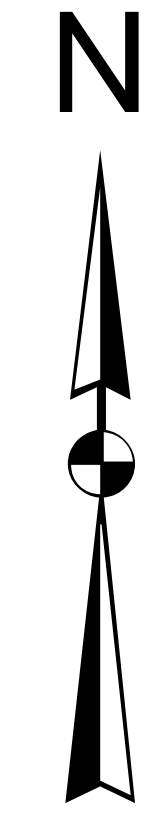


Buffalo Fire CO-WRF-000147 IA Map



Legend

-  Trails open to hikers, horses, and pack animals
-  Trails open to bikers and hikers
-  Roads open to highway legal vehicles
-  Roads open to all vehicles.
-  Roads and trails managed by ski areas
-  Summit County Fire Districts



June 15, 2018
Day
Scale 1:60,000
NAD83
RLM

