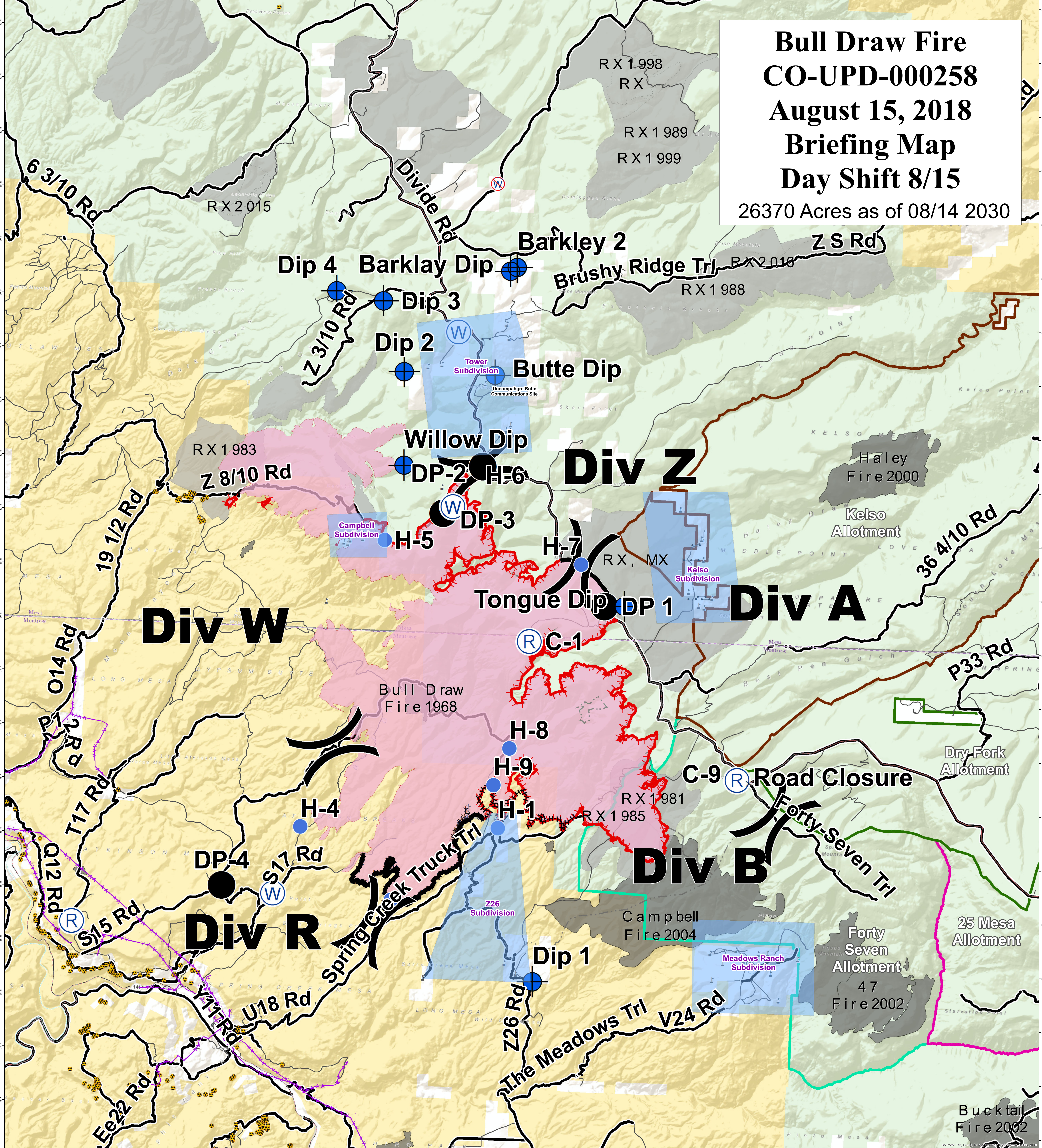


Bull Draw Fire CO-UPD-000258 August 15, 2018 Briefing Map Day Shift 8/15

26370 Acres as of 08/14 2030



- | | | | | |
|-----------------|------------------|---------------------------------|-------------------------|----------------------------|
| Uranium Sites | Ⓡ Repeater | — Uncontrolled Fire Edge | USFS Grazing Allotments | — Other Routes |
| ▲ Aerial Hazard | ▲ Safety Zone | — Completed Line | 25 Mesa | Structure Protection Zones |
| × Closure | Ⓜ Water Source | ⊘ Completed Dozer Line | Dry Fork | Prescribed Fires |
| ♦ Dip Site | Ⓜ Water Tank | ⋯ Completed Hand Line | Forty Sevn | Historic Fires |
| ● Drop Point | Ⓜ Value at Risk | ⋯ Road as Completed Line | Kelso | Bureau of Land Management |
| — Gate | ● Other | — Access or Improved Road | State Highway | Private |
| ● Helispot |) Division Break | — Aerial Hazard | — Major Roads | US Forest Service |
| | | — Wildfire Daily Fire Perimeter | | |
| | | ⊠ Proposed Burnout | | |

0 10 Miles

