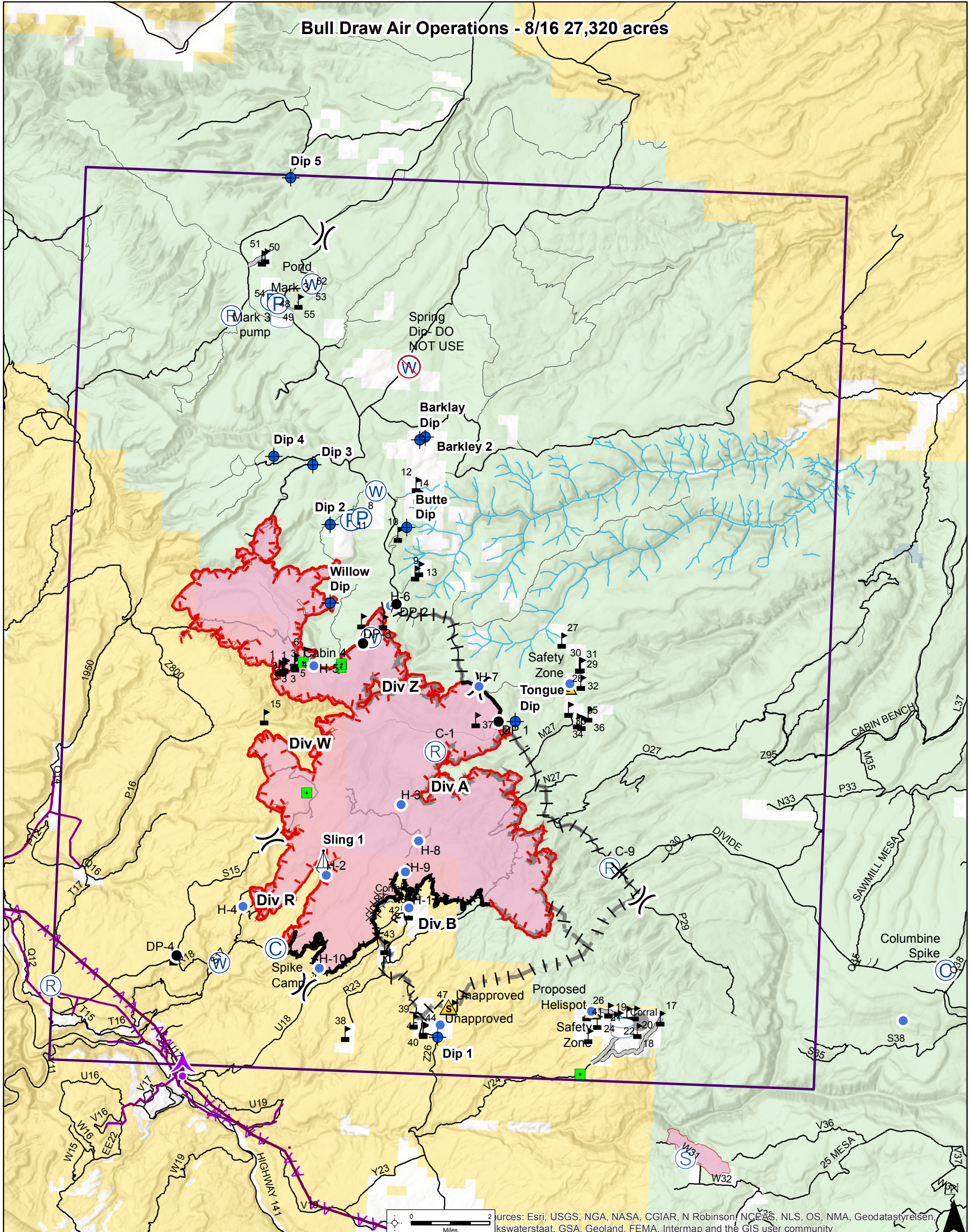


Current TFR	Sling Site	Uncontrolled Fire Edge	Bureau of Land Management
Restricted Water Source	Staging Area	Completed Line	Private
Aerial Hazard	Water Source	Completed Dozer Line	State, County, City, Areas
Camp	Water Tank	H - H Completed Hand Line	US Forest Service
Dip Site	Restricted Water Source	R - R Road as Completed Line	
Drop Point	Value at Risk	Access or Improved Road	
Helispot	Other	Proposed Burnout	
Landmark	Aerial Hazard	Wildfire Daily Fire Perimeter	
Pump	Aerial Hazard	Proposed Burnout	
Repeater	Aerial Hazard	County Roads	
Safety Zone	Aerial Hazard	FS Roads	



Label	Latitude	Longitude
Willow Dip	38° 33.089' N	108° 40.620' W
Tongue Dip	38° 30.629' N	108° 35.280' W
Butte Dip	38° 34.827' N	108° 38.551' W
Barklay Dip	38° 36.771' N	108° 38.280' W
Dip 2	38° 34.827' N	108° 40.707' W
Dip 1	38° 23.843' N	108° 37.281' W
Dip 4	38° 36.277' N	108° 42.373' W
Dip 5	N38° 42.45'	W108° 42.21'
Dip 3	38° 36.127' N	108° 41.264' W



Sources: Esri, USGS, NGA, NASA, CGIAR, N Robinson, NCEAS, NLS, OS, NMA, Geodatasyreisen, kswaterstaat, GSA, Geoland, FEMA, Intermap and the GIS user community