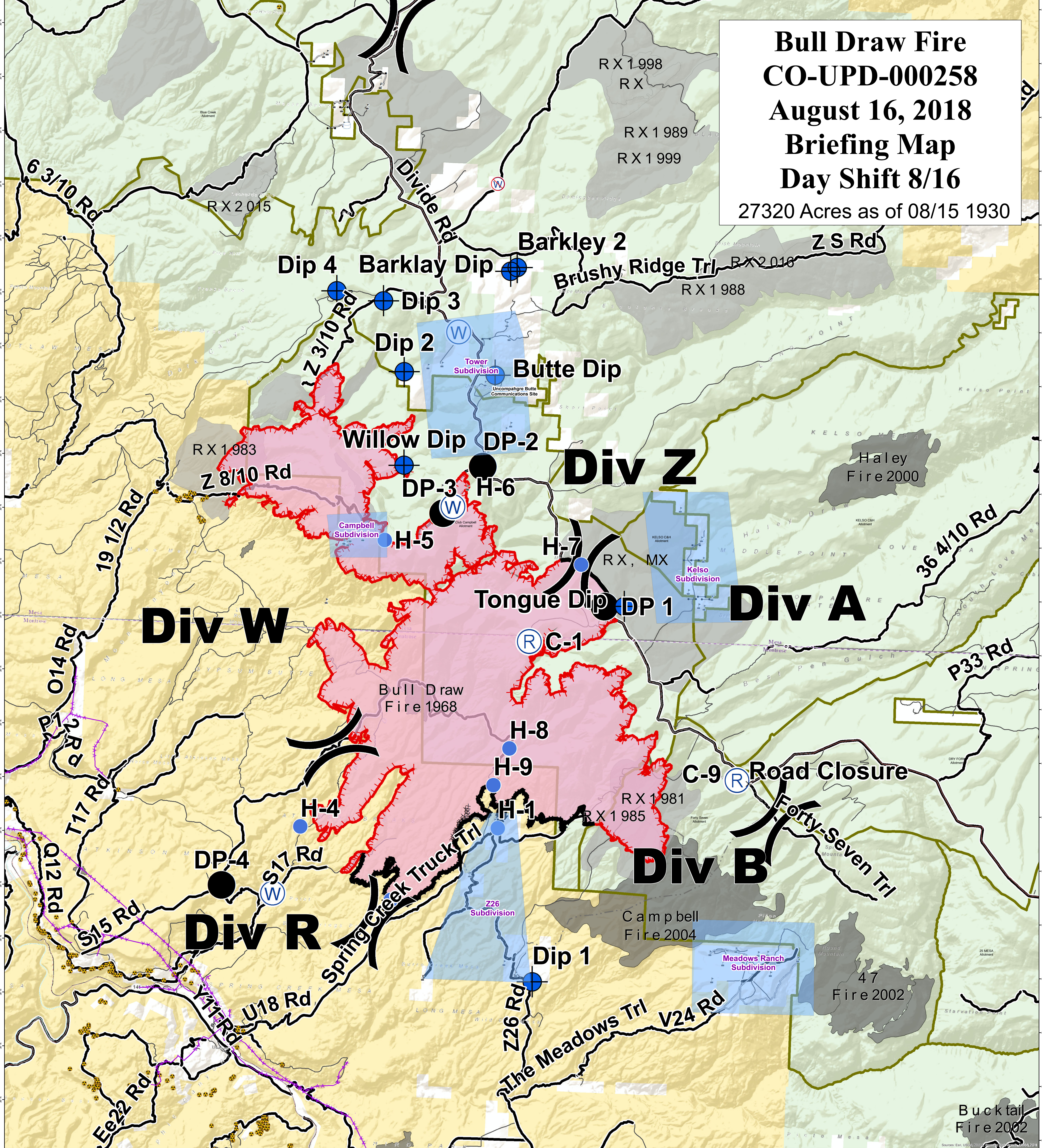
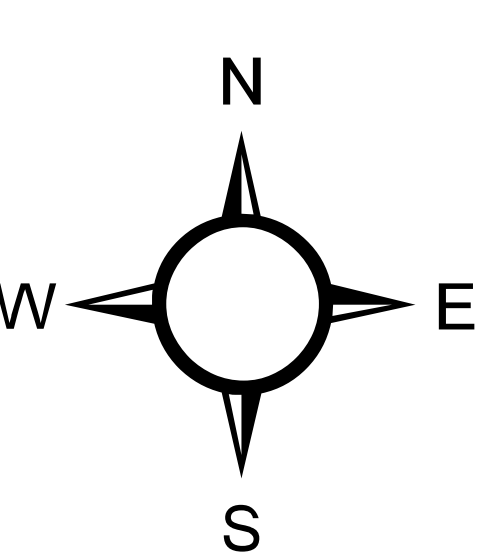
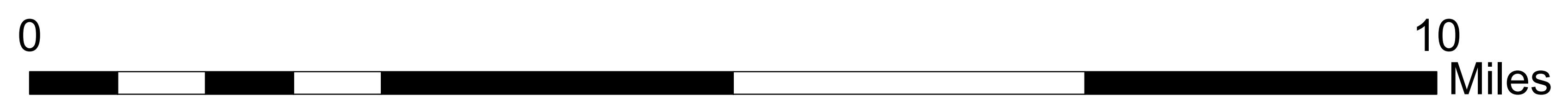


Bull Draw Fire CO-UPD-000258 August 16, 2018 Briefing Map Day Shift 8/16

27320 Acres as of 08/15 1930



- | | | | | |
|-----------------|------------------|---------------------------------|------------------------------|-----------------------------|
| Uranium Sites | Ⓜ Repeater | — Uncontrolled Fire Edge | ▭ USFS Grazing Allotments | ▭ Bureau of Land Management |
| ⚡ Aerial Hazard | ▲ Safety Zone | — Completed Line | — State Highway | ▭ Private |
| × Closure | Ⓜ Water Source | ▨ Completed Dozer Line | — Major Roads | ▭ US Forest Service |
| • Dip Site | Ⓜ Water Tank | ⋯ Completed Hand Line | — Other Routes | |
| ● Drop Point | ⋮ Value at Risk | ⋯ Road as Completed Line | ▭ Structure Protection Zones | |
| — Gate | ● Other | — Access or Improved Road | ▭ Prescribed Fires | |
| • Helispot |) Division Break | ⚡ Aerial Hazard | ▭ Historic Fires | |
| | | ▭ Wildfire Daily Fire Perimeter | | |



GISS: FAD
Date map produced: Aug 15, 2018
2031 hrs
UTM NAD83 Zone 13N