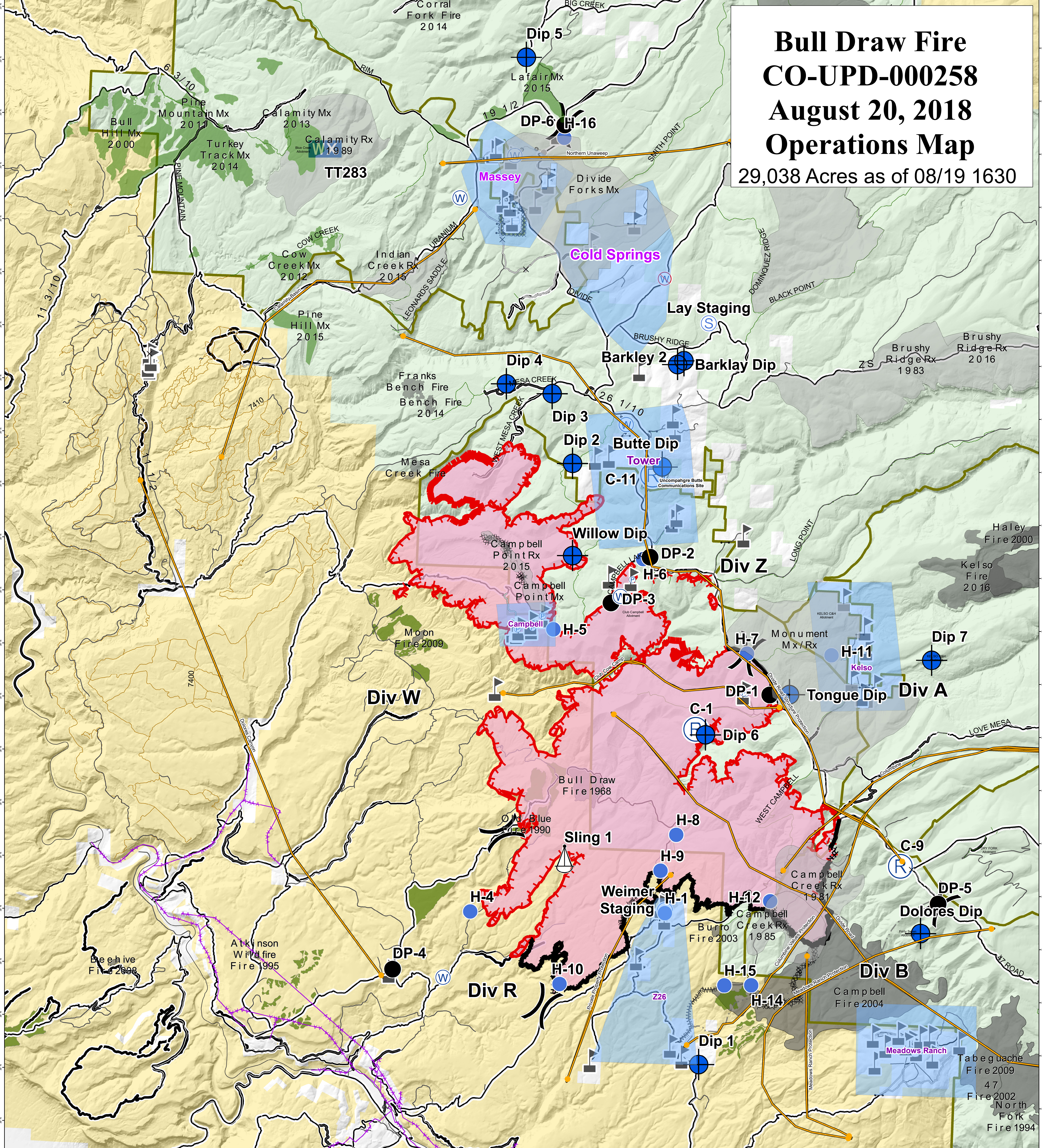


Bull Draw Fire CO-UPD-000258 August 20, 2018 Operations Map

29,038 Acres as of 08/19 1630



Uranium Sites	▲ Safety Zone	— Uncontrolled Fire Edge	→ Management Action Point (MAP)	— State Highway	■ Bureau of Land Management
✦ Aerial Hazard	⚓ Sling Site	— Completed Line	■ Wildfire Daily Fire Perimeter	— Major Roads	□ Private
× Closure	⊙ Staging Area	⋯ Completed Dozer Line	■ Structure Protection Zones	— Other Routes	■ US Forest Service
◆ Dip Site	⊕ Water Source	— Completed Hand Line	Treatment_	— BLM Road	
● Drop Point	⊖ Water Tank	— Road as Completed Line	■ Fire	— USFS Routes	
— Gate	⋮ Value at Risk	— Access or Improved Road	■ Mechanical	— USFS Routes	
● Helispot	⋮ Other	— Utility Line	■ Prescribed Burn	— County roads	
⊕ Pump	⋮ Division Break	→ Management Action	■ USFS Grazing Allotments		
⊕ Repeater					

0 10 Miles

GIS: KMB
Date map produced: Aug 19, 2018
2141 hrs
UTM NAD83 Zone 13N