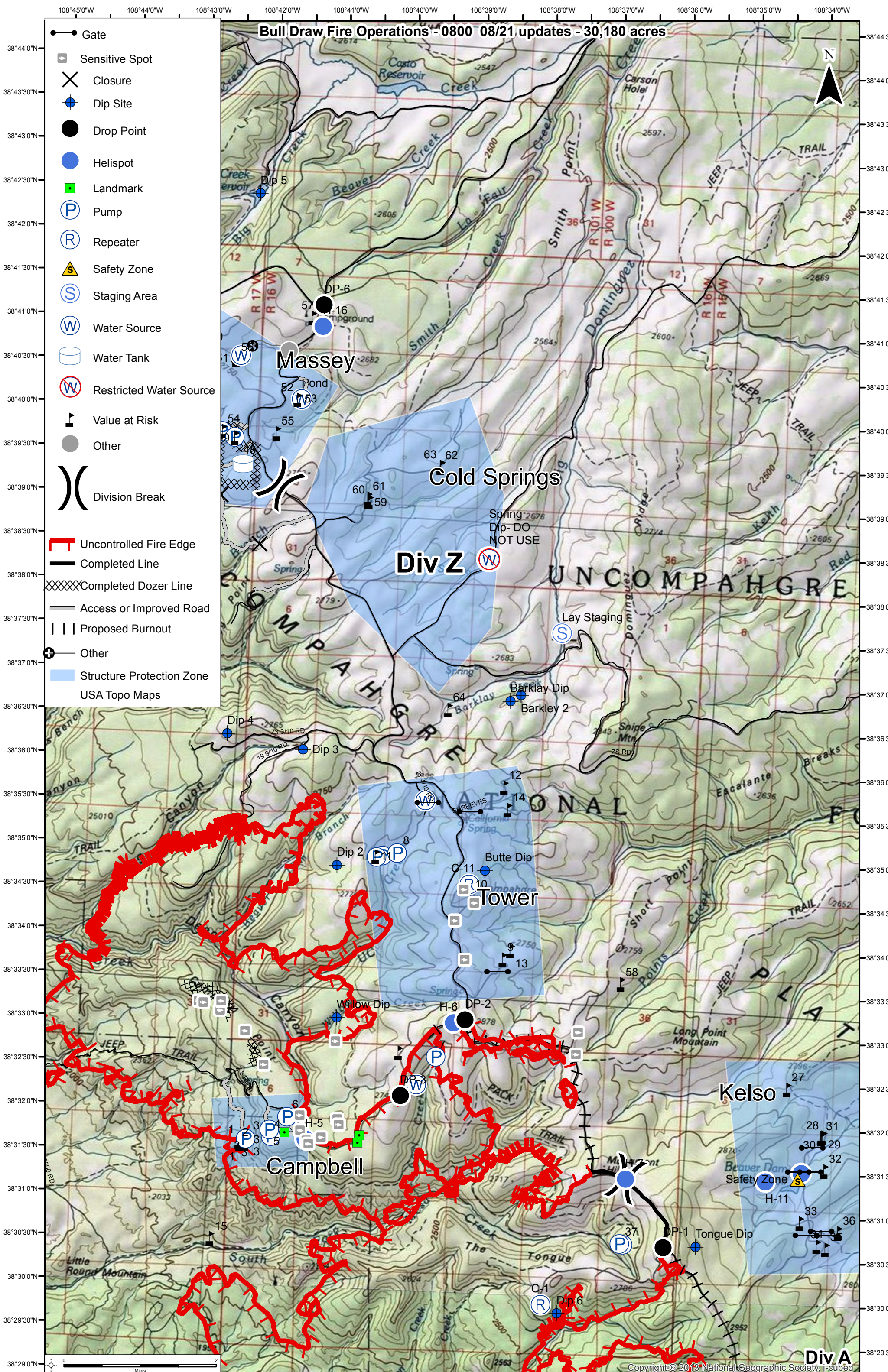


Bull Draw Fire Operations - 0800 08/21 updates - 30,180 acres



- Gate
- Sensitive Spot
- Closure
- Dip Site
- Drop Point
- Helispot
- Landmark
- Pump
- Repeater
- Safety Zone
- Staging Area
- Water Source
- Water Tank
- Restricted Water Source
- Value at Risk
- Other
- Division Break
- Uncontrolled Fire Edge
- Completed Line
- Completed Dozer Line
- Access or Improved Road
- Proposed Burnout
- Other
- Structure Protection Zone
- USA Topo Maps

