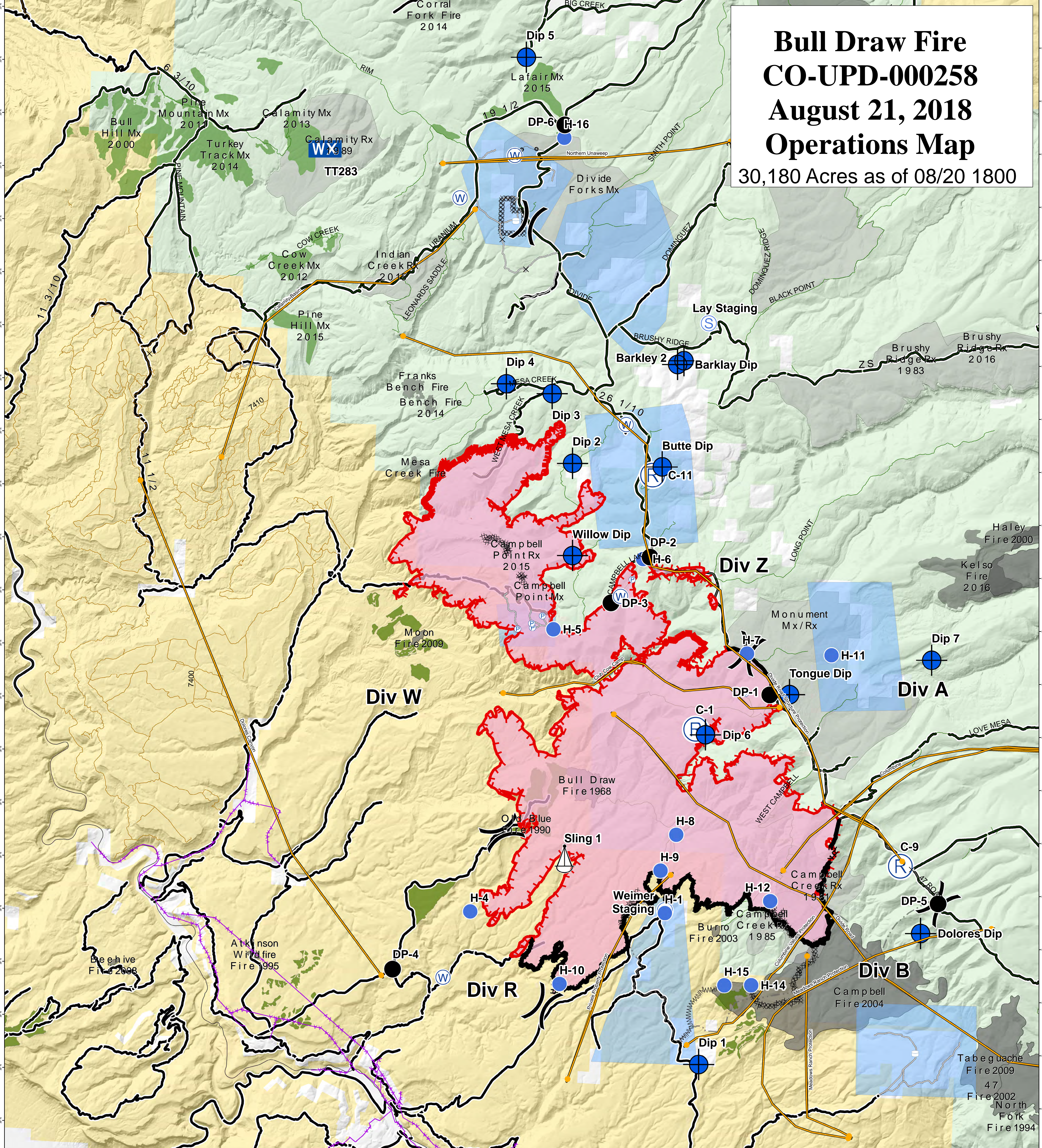


Bull Draw Fire CO-UPD-000258 August 21, 2018 Operations Map

30,180 Acres as of 08/20 1800



Uranium Sites	▲ Safety Zone	— Uncontrolled Fire Edge	— Management Action Point (MAP)	— State Highway	■ Bureau of Land Management
✦ Aerial Hazard	⚓ Sling Site	— Completed Line	■ Wildfire Daily Fire Perimeter	— Major Roads	□ Private
× Closure	⊙ Staging Area	⋯ Completed Dozer Line	■ Structure Protection Zones	— Other Routes	■ US Forest Service
◆ Dip Site	⊙ Water Source	— Completed Hand Line	Treatment	— BLM Road	— USFS Routes
● Drop Point	⊙ Water Tank	— Road as Completed Line	■ Fire	— USFS Routes	— County roads
— Gate	⊙ Value at Risk	— Access or Improved Road	■ Mechanical	— USFS Routes	
● Helispot	● Other	— Utility Line	■ Prescribed Burn		
⊙ Pump) Division Break	— Management Action Point	■ USFS Grazing Allotments		
⊙ Repeater					

0 10 Miles

GIS: KMB
Date map produced: Aug 20, 2018
2311 hrs
UTM NAD83 Zone 13N