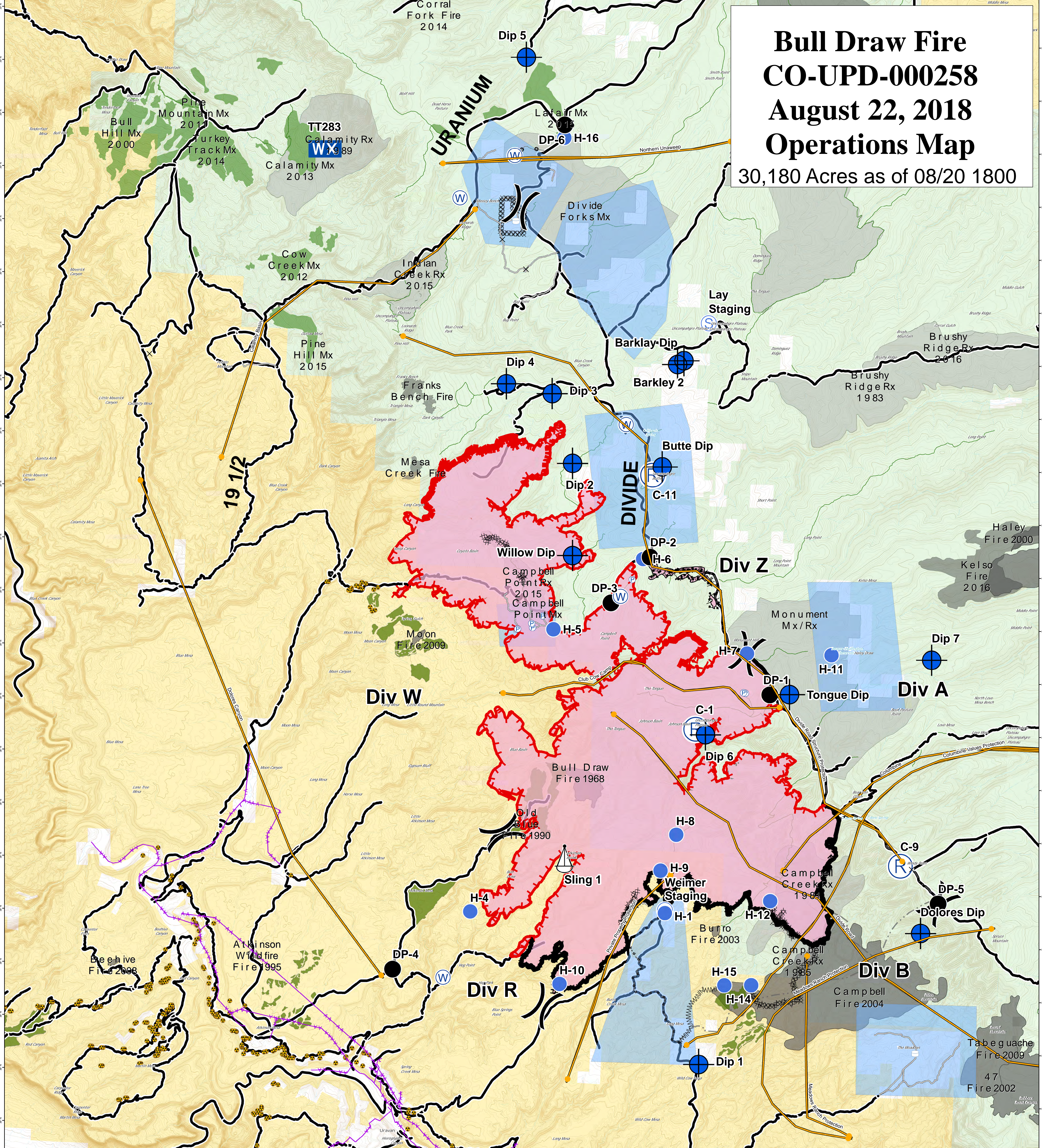
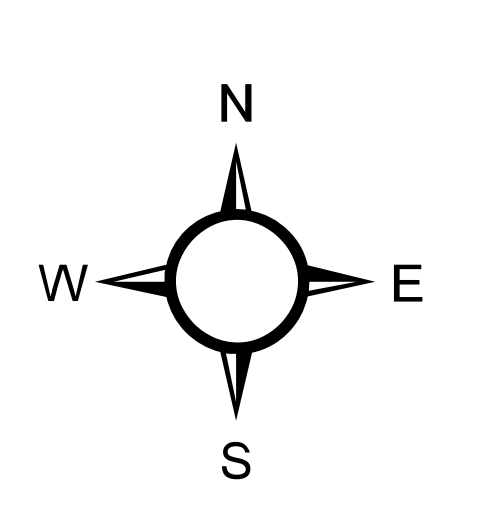
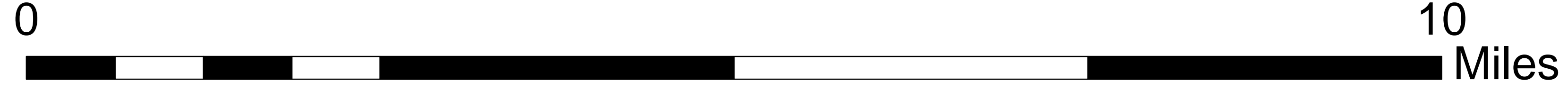


Bull Draw Fire CO-UPD-000258 August 22, 2018 Operations Map

30,180 Acres as of 08/20 1800



- | | | | | | |
|-----------------|---------------------|---------------------------|---------------------------------|-----------------|-----------------------------|
| Uranium Sites | ▲ Safety Zone | — Uncontrolled Fire Edge | ■ Wildfire Daily Fire Perimeter | — State Highway | ■ Bureau of Land Management |
| ✦ Aerial Hazard | ⚙ Sling Site | — Completed Line | ■ Structure Protection Zones | — Major Roads | □ Private |
| × Closure | ⊙ Staging Area | ⊘ Completed Dozer Line | Treatment_ | — Other Routes | ■ US Forest Service |
| ◆ Dip Site | ⊕ Water Source | ⊘ Completed Hand Line | ■ Fire | — BLM Road | — USFS Routes |
| ● Drop Point | ⊖ Water Tank | ⊘ Road as Completed Line | ■ Mechanical | — USFS Routes | — USFS Routes |
| → Gate | ⊘ Value at Risk | — Access or Improved Road | ■ Prescribed Burn | — USFS Routes | — County roads |
| ● Helispot | ● Other | ⊘ Completed Burnout | ■ USFS Grazing Allotments | | |
| ⊕ Pump |)) Division Break | — Utility Line | | | |
| ⊕ Repeater | — Management Action | | | | |



GIS: KMB
Date map produced: Aug 21, 2018
2232 hrs
UTM NAD83 Zone 13N