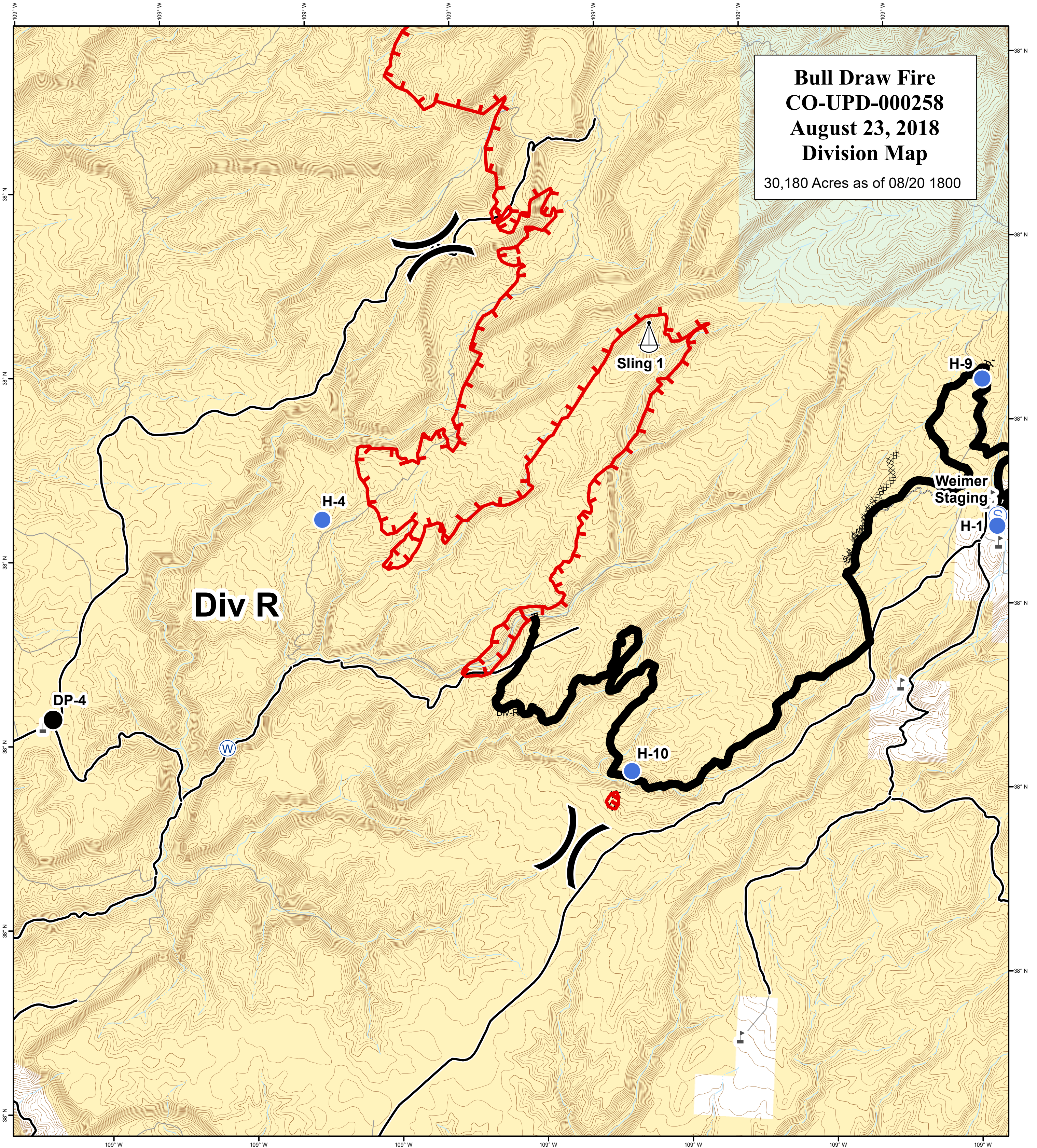
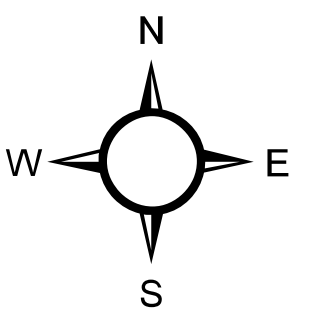
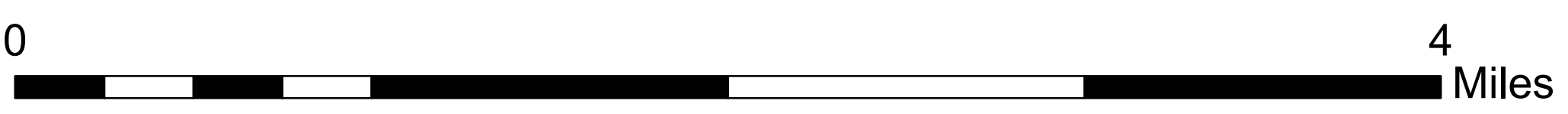


Bull Draw Fire
CO-UPD-000258
August 23, 2018
Division Map
 30,180 Acres as of 08/20 1800



- | | | | |
|---------------|------------------------|-------------------------|---------------------------|
| Aerial Hazard | Sling Site | Completed Line | County roads |
| Closure | Staging Area | Completed Dozer Line | USFS Routes |
| Dip Site | Water Source | Completed Hand Line | Bureau of Land Management |
| Drop Point | Water Tank | Access or Improved Road | Private |
| Helispot | Division Break | Completed Burnout | US Forest Service |
| Pump | Uncontrolled Fire Edge | Other | |
| Repeater | | | |



GISS: KMB
 Date map produced: Aug 22, 2018
 2150 hrs
 UTM NAD83 Zone 13N