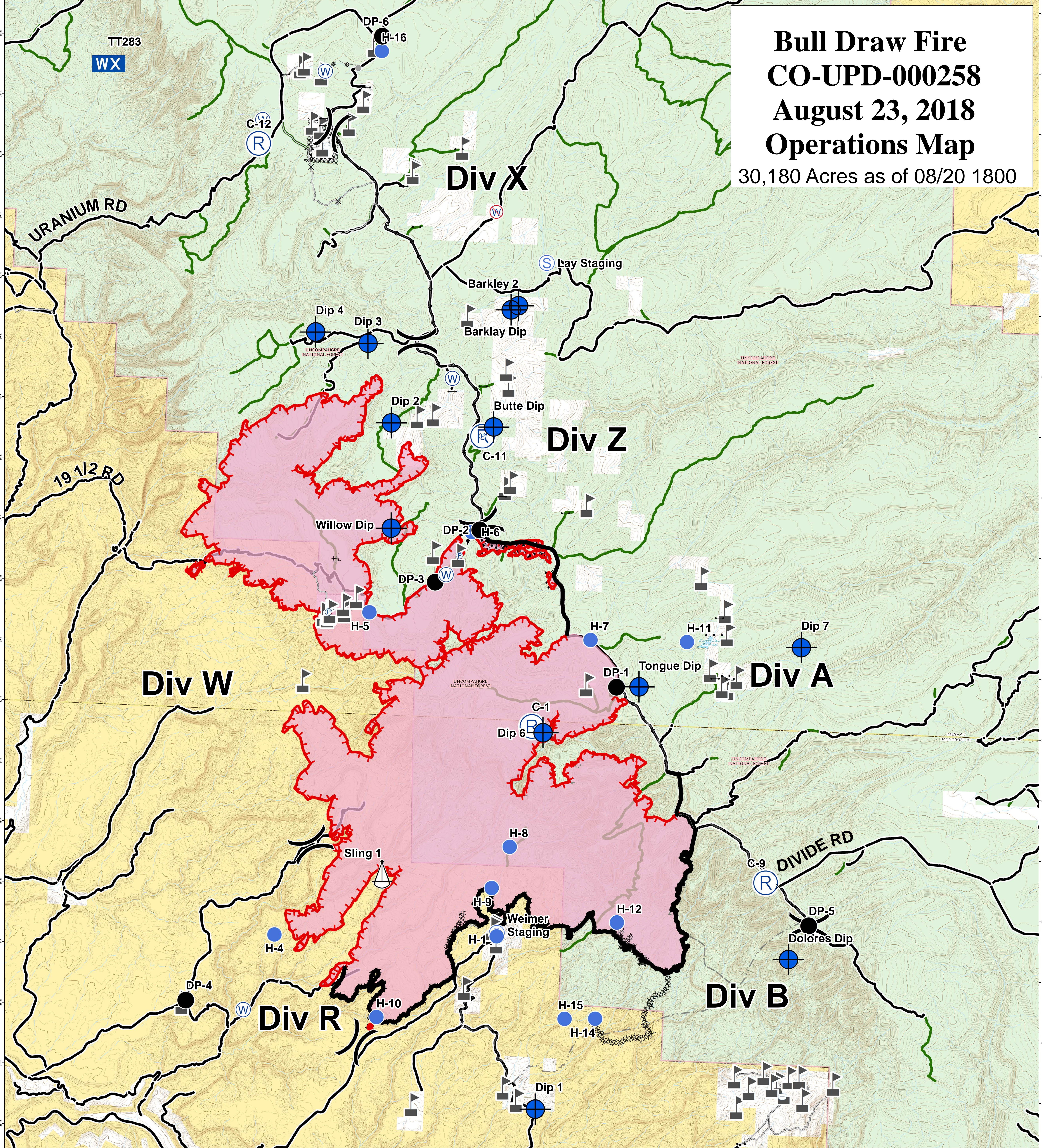


Bull Draw Fire CO-UPD-000258 August 23, 2018 Operations Map

30,180 Acres as of 08/20 1800



- | | | | | |
|--|---|--|--|--|
| <ul style="list-style-type: none"> ▲ Aerial Hazard × Closure ◆ Dip Site ● Drop Point ● Helispot Ⓟ Pump | <ul style="list-style-type: none"> Ⓡ Repeater ⚙ Sling Site Ⓢ Staging Area Ⓜ Water Source Ⓜ Water Tank)) Division Break — Uncontrolled Fire Edge | <ul style="list-style-type: none"> — Completed Line ⊘ Completed Dozer Line ⋯ Completed Hand Line — Access or Improved Road ⊘ Completed Burnout ○ Other | <ul style="list-style-type: none"> — State Highway — Major Roads — Other Routes — BLM Road — USFS Routes — County roads — USFS Routes | <ul style="list-style-type: none"> ■ Wildfire Daily Fire Perimeter ■ Bureau of Land Management □ Private ■ US Forest Service |
|--|---|--|--|--|

