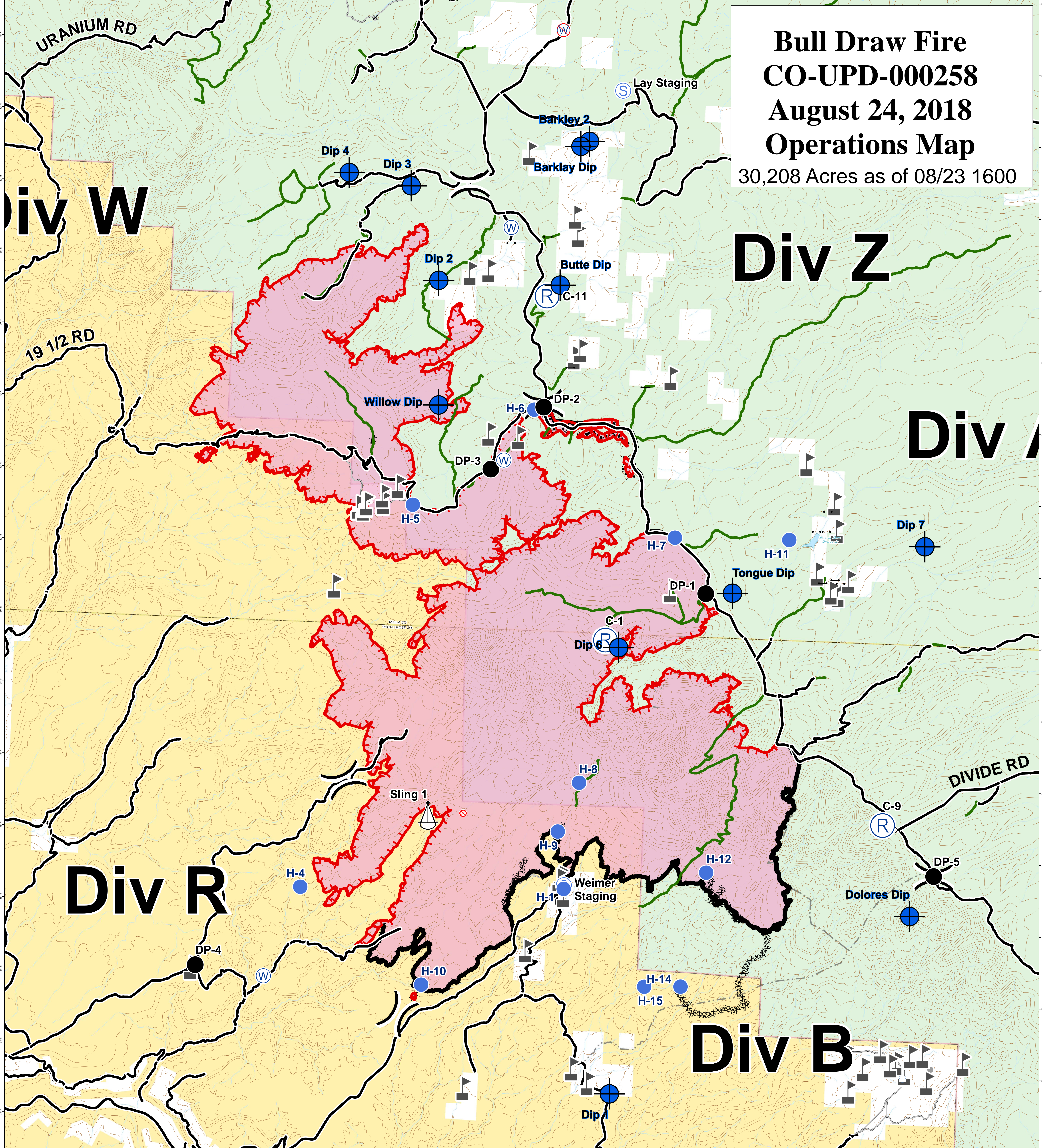
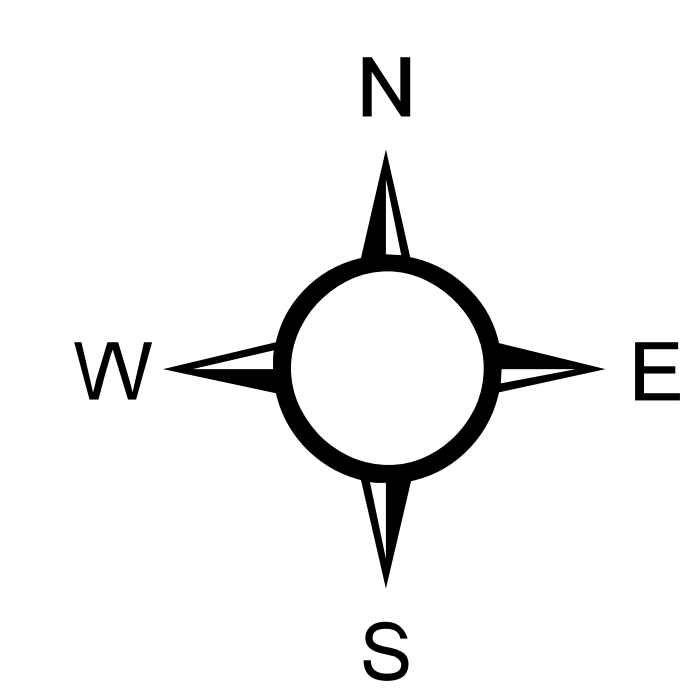
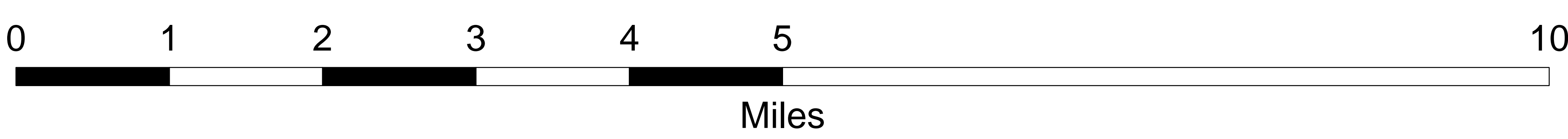


Bull Draw Fire CO-UPD-000258 August 24, 2018 Operations Map

30,208 Acres as of 08/23 1600



- | | | | | |
|---------------|--------------------|---------------------------|----------------|---------------------------------|
| × Closure | ⚙ Sling Site | — Uncontrolled Fire Edge | — County roads | ■ Wildfire Daily Fire Perimeter |
| ● Dip Site | Ⓢ Staging Area | — Completed Line | — USFS Routes | ■ Bureau of Land Management |
| ● Drop Point | Ⓜ Water Source | — Completed Dozer Line | — Private | ■ US Forest Service |
| ⊗ Fire Origin | Ⓜ Water Tank | — Completed Hand Line | | |
| ● Helispot |) (Division Break | — Masticated | | |
| Ⓡ Repeater | | — Access or Improved Road | | |



GISS: KMB
Date map produced: Aug 23, 2018
1809 hrs
UTM NAD83 Zone 13N