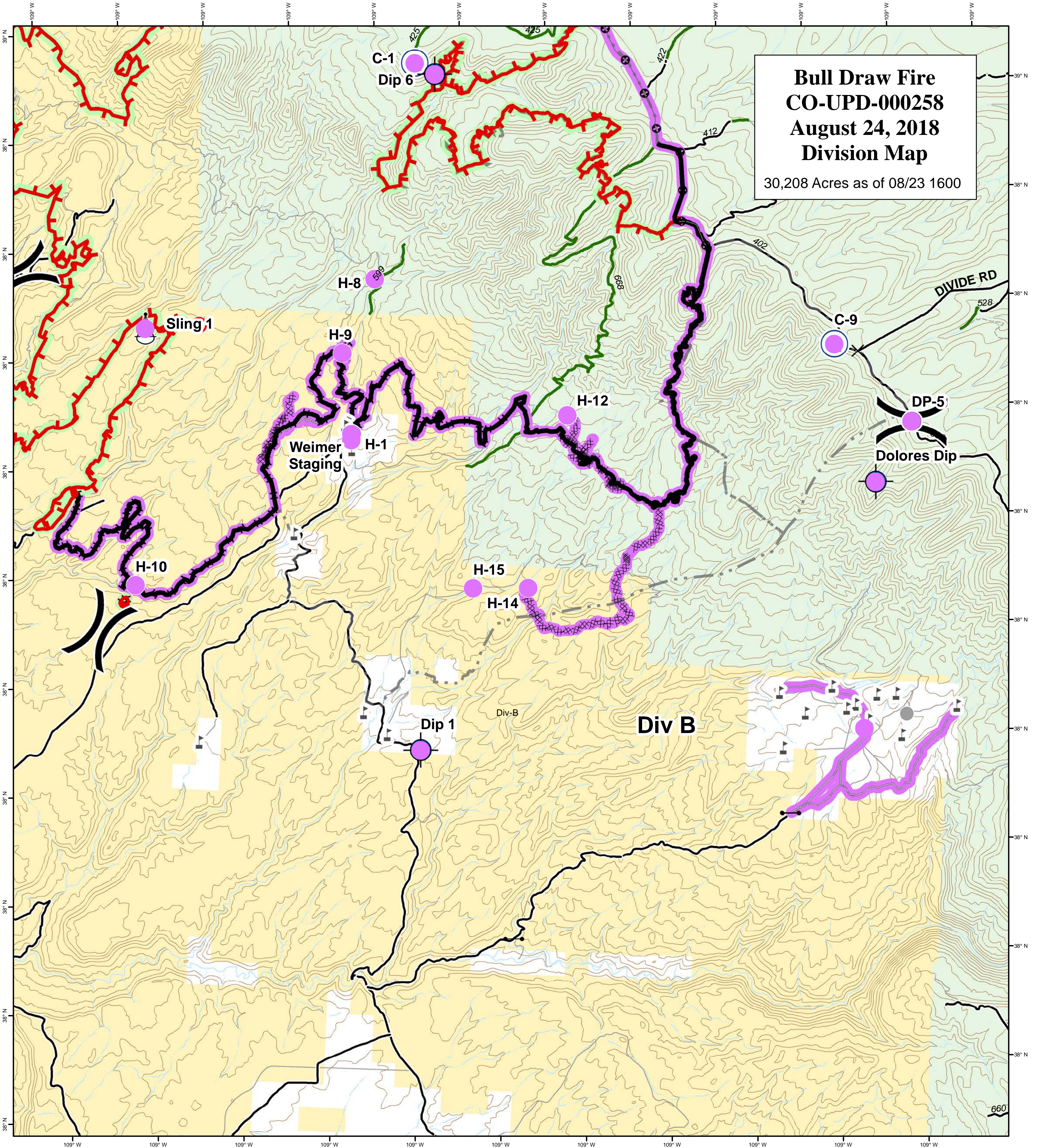
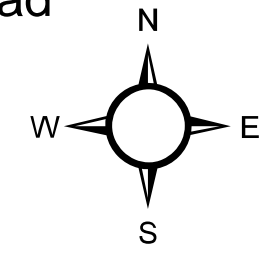


**Bull Draw Fire  
CO-UPD-000258  
August 24, 2018  
Division Map**

30,208 Acres as of 08/23 1600



- |                    |              |                  |                           |                                 |
|--------------------|--------------|------------------|---------------------------|---------------------------------|
| ● Repair Needed    | ✕ Closure    | ⚓ Sling Site     | — Uncontrolled Fire Edge  | — County roads                  |
| ○ No Repair Needed | ⊕ Dip Site   | Ⓢ Staging Area   | — Completed Line          | — USFS Routes                   |
| ● Unknown          | ● Drop Point | Ⓜ Water Source   | ⊗ Completed Dozer Line    | ▭ Wildfire Daily Fire Perimeter |
| ○ No Repair Needed | ● Helispot   | Ⓜ Water Tank     | ⋯ Completed Hand Line     | ▭ Bureau of Land Management     |
| — Unknown          | Ⓟ Pump       | ) Division Break | ⊙ Completed Burnout       | ▭ Private                       |
|                    | Ⓡ Repeater   |                  | ⊙ Mastication             | ▭ US Forest Service             |
|                    |              |                  | — Access or Improved Road |                                 |



GISS: KMB  
Date map produced: Aug 23, 2018  
2210 hrs  
UTM NAD83 Zone 13N